

# Patient-specific implant testing for every anatomical region

Simq GmbH



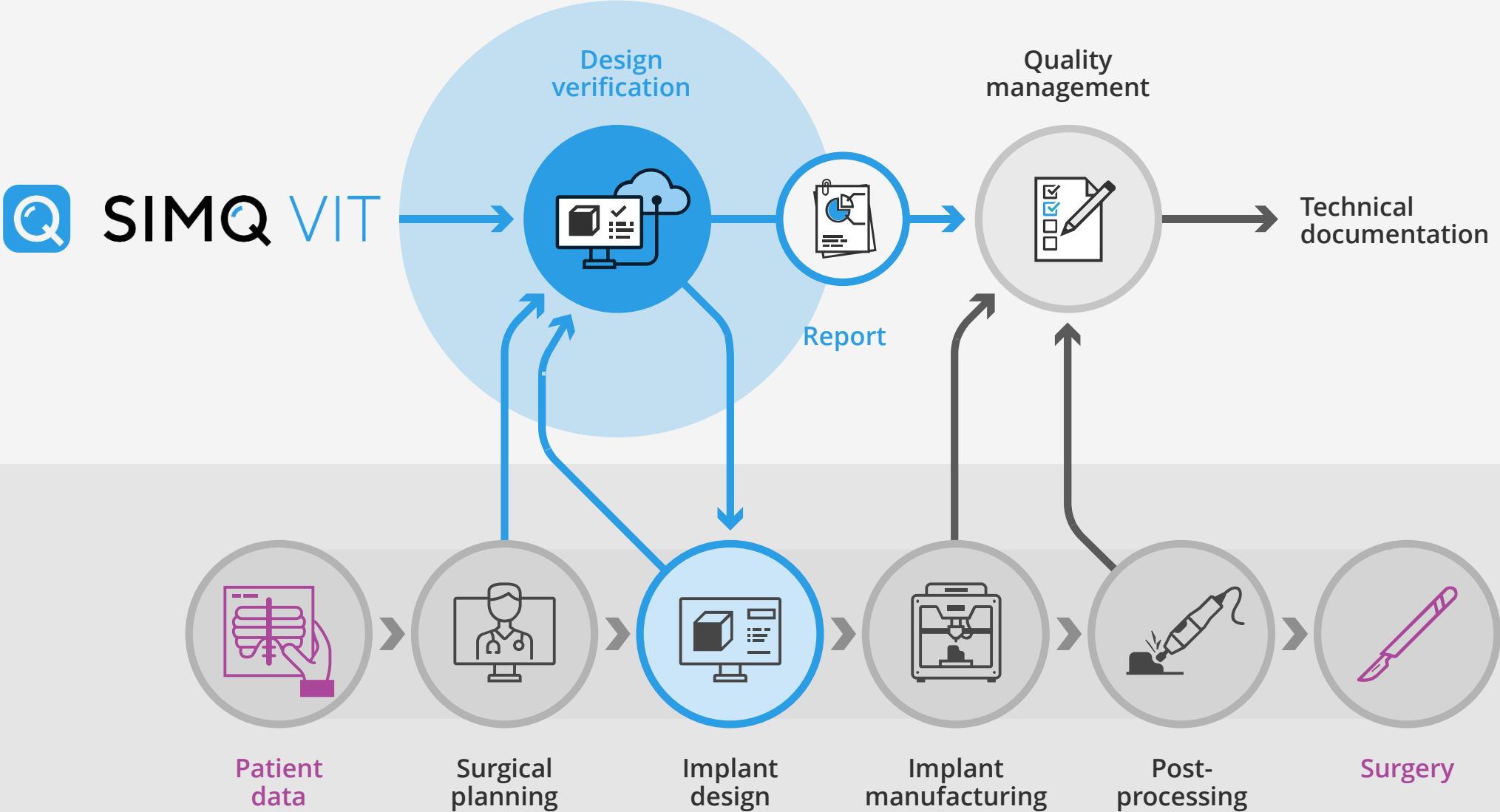


## Virtual Implant Testing in a Nutshell



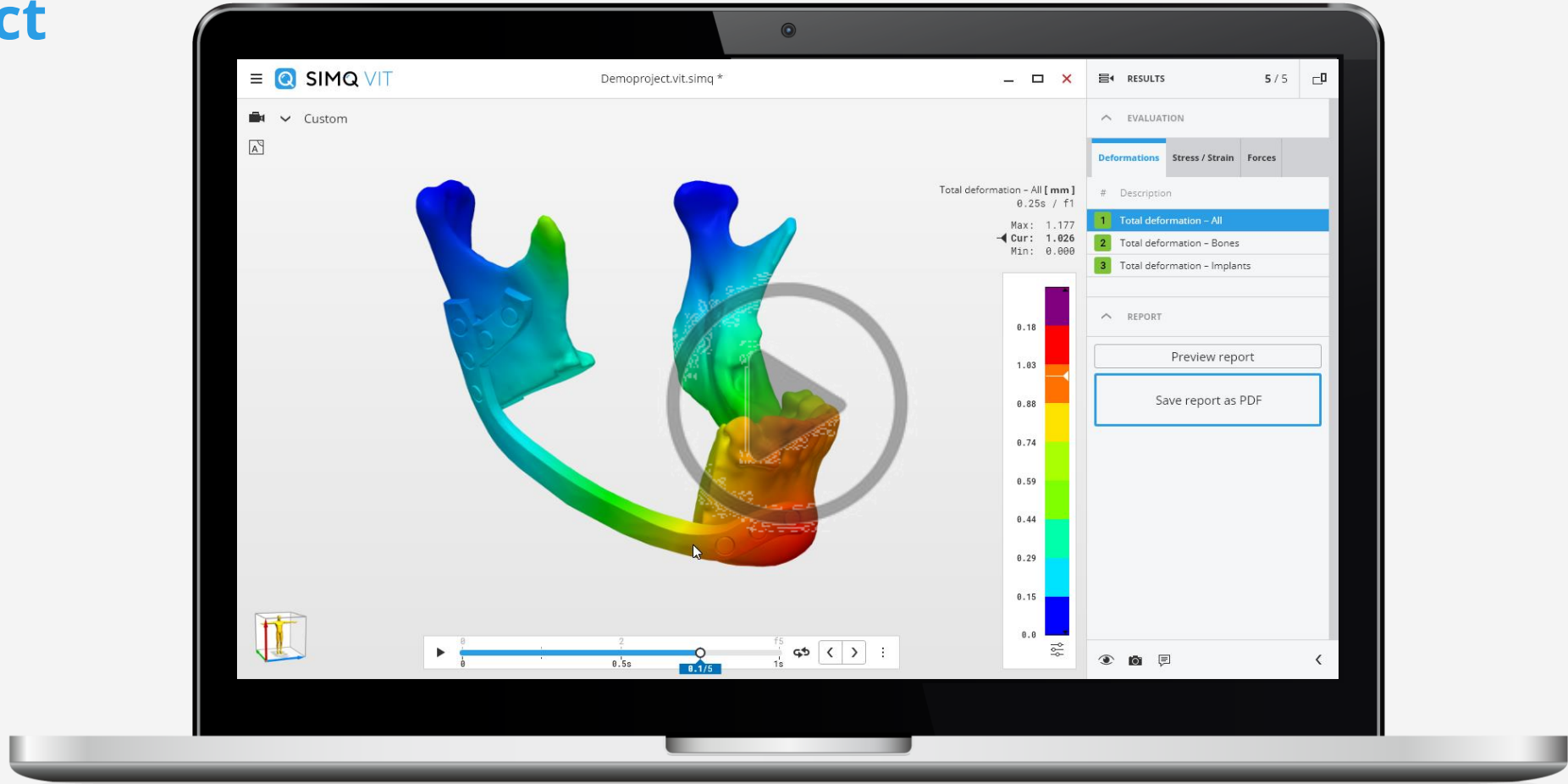
- **Easy-to-use** software for **digital verification** of patient-specific implants (PSIs) that's cybersecure.
- Design **better patient-specific implants** that are **digitally verified in less time** by virtually applying physiological or standardized loads to a patient-specific situation
- **Reduce liability** based on the objective criteria provided to the clinician and designer team during the decision-making process
- Set up highly complex biomechanical simulation within minutes to **ensure implant safety and efficacy**
- Meet new regulatory requirements through virtual testing, **automated report generation** following FDA guidelines
- **Verified and validated** simulation models by academia and industry leaders

# Digital verification for better patient-specific implants





# Product video



Press play



## Much more than other 3D simulation software solutions

| Feature   | SIMQ | Others |
|---|------|--------|
| <b>Secure</b> – Computer system validation (CSV) package according to GAMP 5              | ++   | +      |
| <b>Fast</b> – Set up complex simulations through predefined workflows                     | +    | –      |
| <b>Include physiological load conditions</b> (Muscle and joint reaction forces)           | ++   | –      |
| <b>Higher accuracy</b> – Better meshing for biomechanical simulations than with CAD tools | ++   | +      |
| <b>Digital Verification</b> and validation of models                                      | ++   | –      |
| <b>Automated reporting</b>  | ++   | +      |
| <b>Technical documentation</b> following FDA 1807 Guideline                               | ++   | –      |
| <b>Specialized for custom made medical devices</b>  | ++   | –      |
| <b>Cloud-based</b> infrastructure   | ++   | +      |
| <b>Data sovereignty</b> (Self-hosted)   | +    | +      |
| <b>Flexible</b> – unlimited parallel simulations & users with pay per use model           | ++   | +      |
| <b>Easy</b> – simulations based on STL files  | ++   | +      |


**Thank you for  
your attention**

Vielen Dank  
für Ihre Aufmerksamkeit



**Florian Maier**  
CMO/CSO

fmaier@simq.de  
+49 (0)8092 7005-8332


 [linkedin.com/in/  
florian-maier14/](https://www.linkedin.com/in/florian-maier14/)



**Headquarter Grafing**  
Am Schammacher Feld 37  
85567 Grafing b. Munich



info@simq.de  
+49 (0)8092 7005-122

 [linkedin.com/  
company/simq/](https://www.linkedin.com/company/simq/)