

POINT OF VIEW
2024

slalom

Fabric Monitor

A scalable solution deployed in Microsoft Fabric that enable adoption tracking, content governance, and data discovery within the platform.

Analytics Development Process



Most organizations stop here



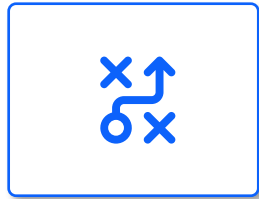
Identify Data Sources

Identify key data elements for each data domain, identify data sources and data attributes



Explore Data

Profile source data to determine data types, value sets, value ranges, and identify outliers



Define KPIs

Define data quality KPIs and a KPI reporting approach



Report Development

Develop data models and reports to answer key business question



Publish Reports

Publish, share, and refresh dashboards and their data sources

Control and Monitor

Establish processes and procedures for data asset and performance monitoring

This Solution



Asset Inventory and Performance Monitoring (Metadata Pipeline)

The Opportunity

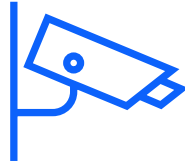
- Monitoring is critical to [successful governance](#) and [adoption](#), but most organizations [build first](#) and [implement monitoring later](#)
- Out of the box options either [focus on performance](#) or provide [limited information about the adoption and usage](#) within the tenant
- Fabric's [unified SaaS platform](#) and [all-in-one approach](#) to storage/compute/authentication [makes solution deployment easy](#)
- This solution provides:
 - [Immediate tactical value](#) and a [fully customizable architecture](#) for additional refinement
 - [Complete overview](#) of the Power BI/Fabric environment and assets
 - [Ongoing monitoring](#) and holistic [data discovery](#)

Best-in-Class System Oversight



Performance Monitoring

- CPU usage
- Bandwidth-heavy processes & items
- Performance over time



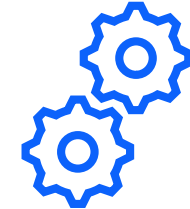
Inventory & User Activity Monitor

- User activity/usage data
- Catalog/inventory data
- Licensing, permissions, and access control



Enterprise Data Dictionary

- Comprehensive, searchable and always up-to-date Data Dictionary
- Data source connection info such as server, database, schema, and object



Tenant Settings Overview

- Status of all tenant settings (enabled/disabled), including specific AD groups
- Last update time to facilitate each security audits



**Microsoft-built reports
+ Log Analytics Integration**



Slalom Power BI Monitoring Accelerator

**What we're
not -
Performance
Monitoring**



Performance Monitoring Recommendation:

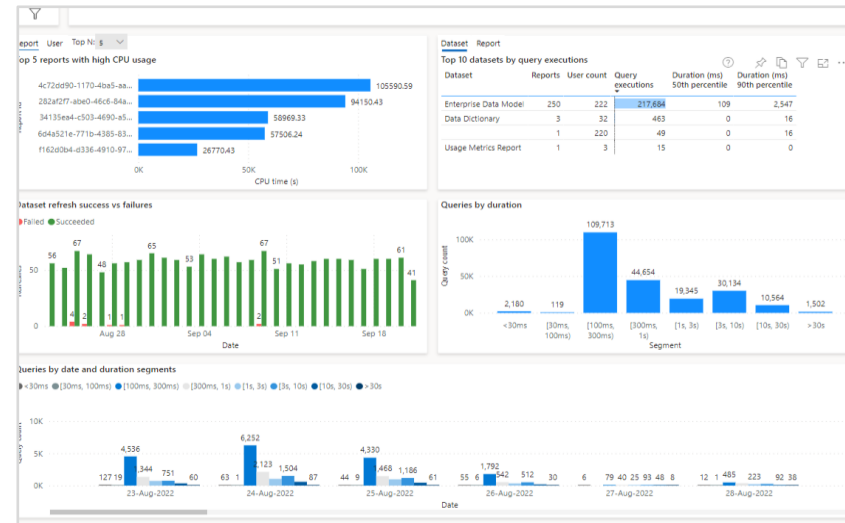
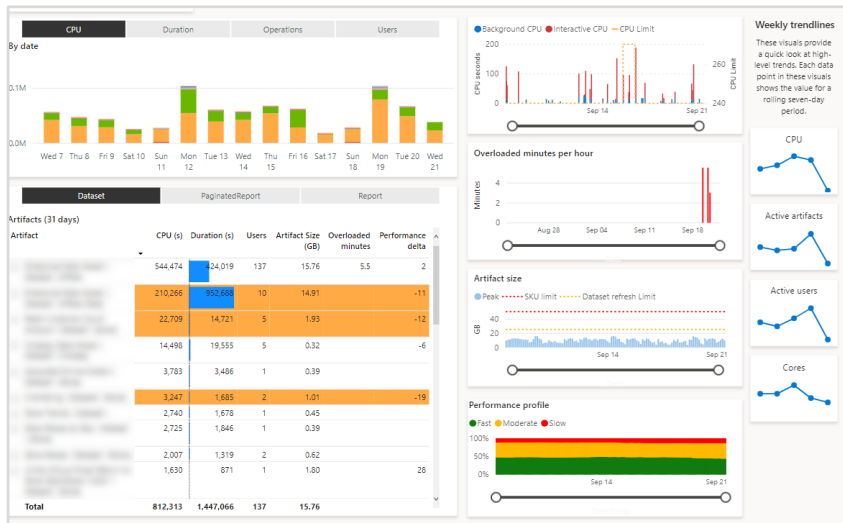
Capacity Metrics App

+

Log Analytics App

- Overall CPU usage and capacity health
- Identify bandwidth-Heavy Processes & Artifacts
- Template reports provided by Microsoft
- Data model can be shared, and custom dashboards developed
- 14 day rolling history
- Requires Power BI Premium Capacity

- Fine-grain telemetry data (specific queries run, timeouts, user requests, etc.)
- Template reports provided by Microsoft
- Customizable Data Model & Dashboards
- Historical data logging from deployment point onwards
- Requires Azure Log Analytics service (extra cost)
- Requires Power BI Premium Capacity



**What we *are* -
Inventory &
Usage
Monitoring**

Inventory & Usage Monitoring Recommendation:

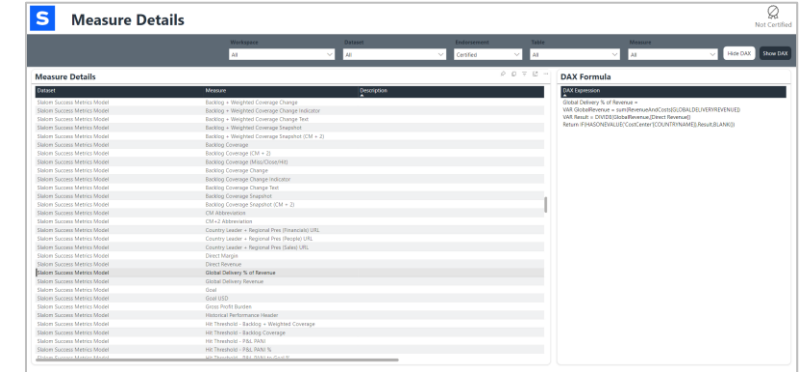
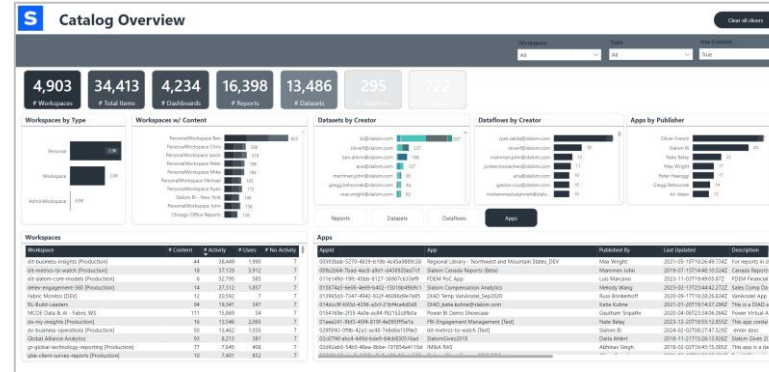
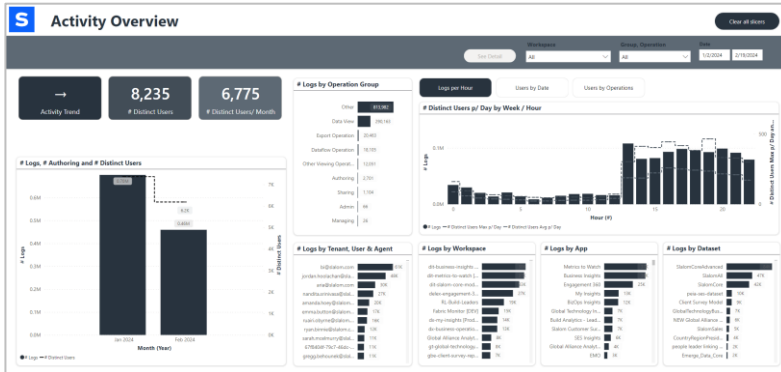
Slalom "Fabric Monitor" Accelerator

Features & Use Cases

- "What data sources are most commonly used in our reports?"
- "Are items being shared according to our organizational policies?"
- "Are users using the reports as much as we think they are?"
- "Are we paying for Pro licenses that are not being used?"
- "Who are our most influential power users who deserve organizational recognition and support?"
- "Are KPIs defined consistently across all data models?"

Available data

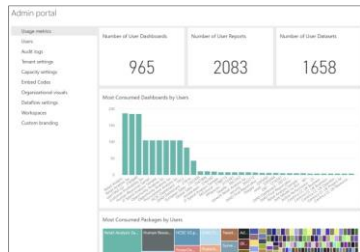
- Activity/Usage
- Capacities
- Apps
- Dashboards
- Dashboard tiles
- Dataflows
- Dataflow data source lineage
- Datasets
- Dataset dataflow lineage
- Dataset data source lineage
- Users
- Workspaces
- User access permissions
- Dataset schema
- Parsed data source details
- Datamarts
- Tenant settings
- User Profiles
- User licenses



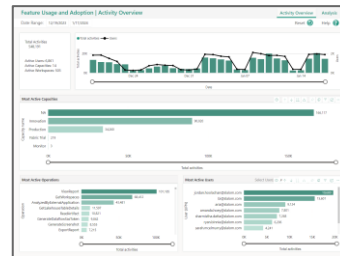
The “out-of-the-box” tools are just the beginning...

We recognize there are monitoring options available.

Our goal is to create a best-in-class technology solution that **supplements these options** to move your data organization towards better **BI governance** and **visibility**.



Admin Portal



Feature Usage and Adoption Report



A monitoring solution built for data professionals

We understand that the responsibility to monitor and govern a Fabric/Power BI environment often falls to those with data skills.

Familiar Tools

- Integration layer written in **Python**
- Data is parsed and committed to **relational tables**, rather than unstructured flat files
- Output data queryable in **regular SQL**
- Sample reports built in **Power BI**

Powerful Capabilities

- **Fabric-native** solution that takes advantage of services you already own
- Full **git integration** between Fabric and Azure DevOps, allowing for better **source control** and **deployment workflows**

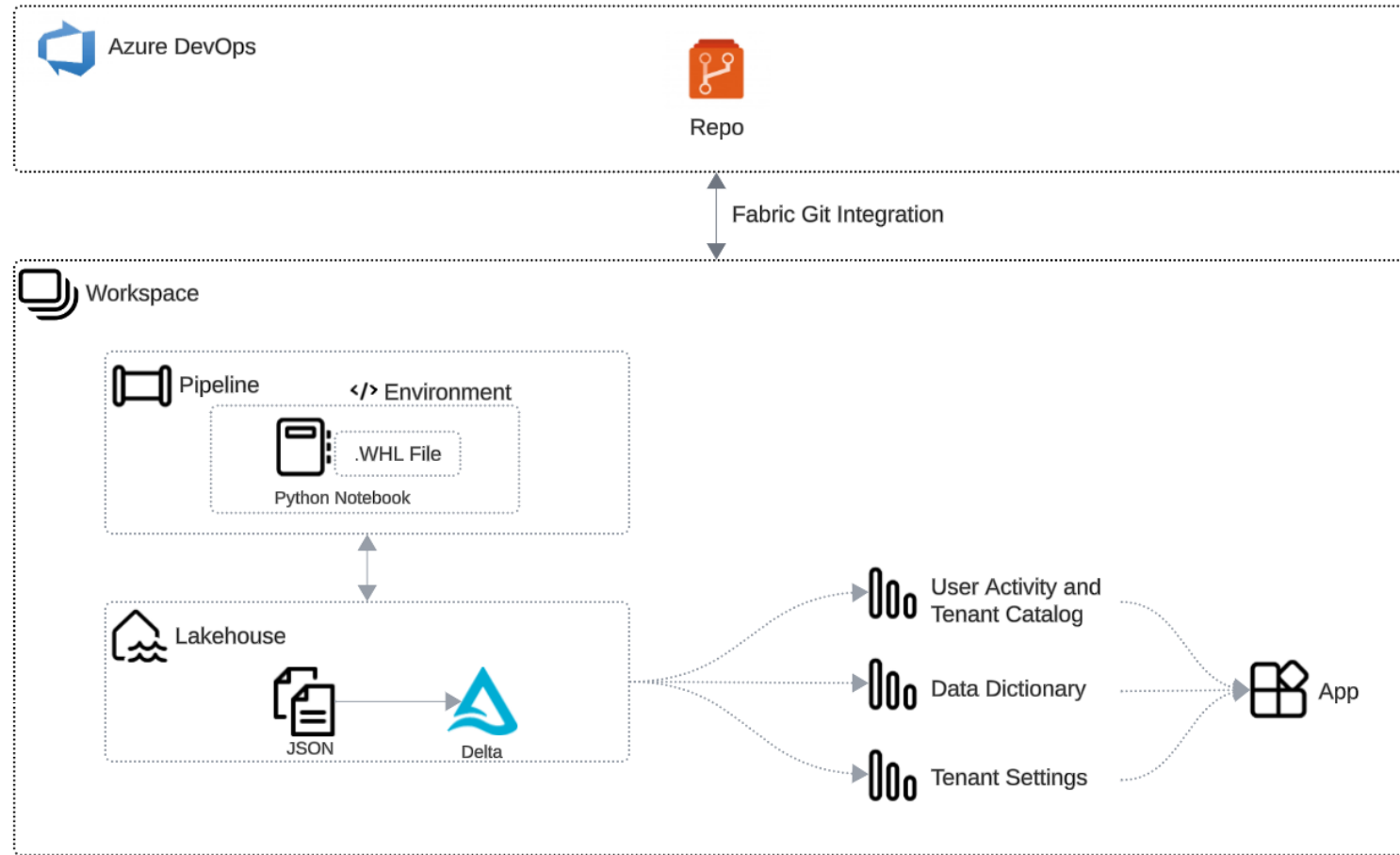


Fabric Monitor Accelerator Details

Solution Features and Requirements

Features	PERFORMANCE MONITORING APPS		INVENTORY MONITORING ACCELERATOR		NOTES
	CAPACITY METRICS	LOG ANALYTICS			
Overall CPU usage and capacity health	✓				
Identify resource-heavy processes & artifacts	✓				
Fine-grain telemetry data (queries, timeouts, user requests, etc.)		✓			
Allows for historic data (> 30 days) to be retained		✓	✓		
Viewership/adoption metrics			✓		
Comprehensive item inventory and overview of data estate			✓		
Comprehensive data dictionary, including measure's DAX definitions			✓		Queryable across the entire tenant
Security, permissions, and licensing details			✓		Critical for effective governance
Tenant settings overview			✓		Typically only available to tenant admins
System Requirements					
PBI premium capacity	✓	✓	✓		
			Fabric Architecture	Azure Architecture	Slalom Power BI Inventory Monitoring Accelerator can be implemented using either Fabric architecture or Azure-based architecture based on best fit for client environment
Azure DevOps			✓	✓	
Microsoft Fabric			✓		
Azure Log Analytics Workspace		✓		✓	
Azure PaaS Services: Functions, SQL DB, VNet, Container Registry				✓	

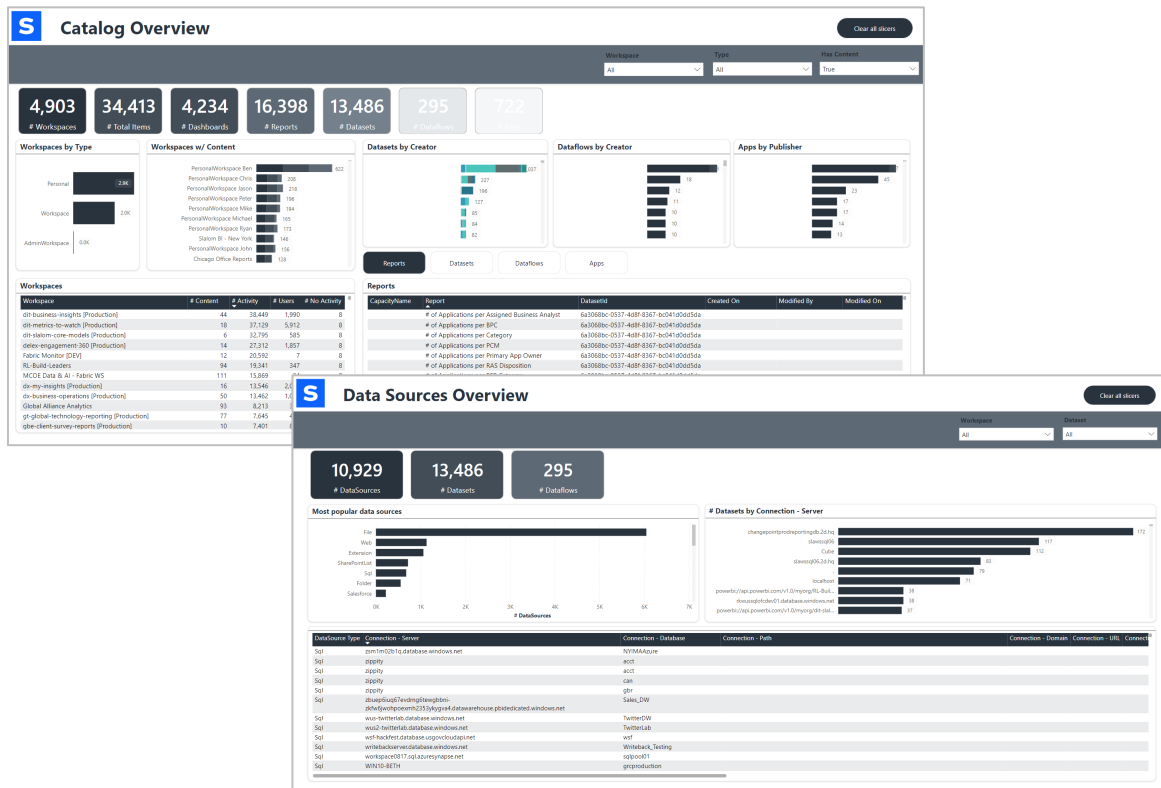
Fabric-based Solution Architecture



03

Use Cases

Self-Service Data Discovery Dashboards



Catalog & Data Sources Overview

- Provide an **org-wide-accessible** report for analysts to browse through to aid in the discovery of existing reports and datasets for re-use.
- Dynamic links allow users to **easily request access** to new reports & workspaces they don't currently have access to.
- Allow users to **sort by usage metrics** including page views, unique viewers, recency - an experience not available in the native app explorer.
- Allow users to quickly and easily surface datasets and reports that are "sponsored" or "certified" to **promote trust** in specific reports.

Self-Service Data Discovery Dashboards

Measure Details

Measure	Description
Direct Margin and Profit Self-Service Template Version	Direct Margin with Retail Self-Service Template Version
Direct Margin with Retail Self-Service Template Version	Direct Margin with Non-Client Cost of DCCS Team Members % Trend Indicator
Direct Profit % Trend Indicator	Direct Profit % Trend Indicator
Direct Revenue Self-Service Template Version	EB30 Client Selected Font Color
ES30 Engagement % Selected Font Color	Engagement Accounts Receivable Current %
Engagement Accounts Receivable Current %	Engagement Accounts Receivable Over 30 Days Past Due %
Engagement Accounts Receivable Under 30 Days Past Due %	Engagement Arrivals
Engagement Average Bill Rate % Trend Indicator	Engagement Budget Health Issue Indicator
Engagement Budget Health Issue Indicator	Engagement Budget Health Issue Indicator Flag
Engagement Cashflow Health Issue Indicator	Engagement Cashflow Health Issue Indicator Flag
Engagement Contract Health Issue Indicator	Engagement Contract Health Issue Indicator Flag
Engagement Contract Health Issue Indicator	Engagement Contract Limit Amount
Engagement Cost Prior to Last Rev	Engagement Cost Prior to Last Rev
Engagement Cost Prior to Last Rev	Engagement Cost Prior to Last Rev
Engagement Cost Prior to Last Rev	Engagement Cost Prior to Last Rev
Engagement Cost Prior to Last Rev	Engagement Cost Prior to Last Rev
Engagement Cost Prior to Last Rev	Engagement Cost Prior to Last Rev
Engagement Cost Prior to Last Rev	Engagement Cost Prior to Last Rev
Engagement Cost Prior to Last Rev	Engagement Cost Prior to Last Rev
Engagement Cost Prior to Last Rev	Engagement Cost Prior to Last Rev

DAX Formula

```
VAR Expression =  
Engagement Budget Health Issue Indicator = VAR EngagementContext =  
IF(  
HASONEVALUE(EngagementSnapshot[EngagementKey]),  
1,  
0  
)  
VAR Issue =  
IF(  
Engagement Budget Health Issue Indicator Flag = 1,  
UNICHAR(9837),  
UNICHAR(9839)  
)  
VAR Result = IF(EngagementContext = 0, BLANK(), Issue)  
RETURN  
Result
```

Tenant Settings Overview

Setting Group	Tenant Settings	Is Setting Enabled?	# Enabled AD Groups
Admin API settings	Admin API settings		
Enhance admin APIs responses with DAX and mailup expressions	Enhance admin APIs responses with detailed metadata		1
Service principals can access read-only admin APIs	Service principals can access read-only admin APIs		5
Advanced networking	Advanced networking		
Azure Private Link	Block Public Internet Access		
App settings	App settings		
Create template organizational apps	Publish apps to the entire organization		
Push apps to end users			
Audit and usage settings	Audit and usage settings		
Azure Log Analytics connections for workspace administrators	Review data in usage metrics for content creators		
Usage metrics for content creators			3
Capilot and Azure OpenAI Service (preview)	Capilot and Azure OpenAI Service (preview)		
Data sent to Azure OpenAI can be processed outside your tenant's geographic region, compliance boundary, or national cloud instance	Users can use a preview of Copilot and other features powered by Azure OpenAI		3
Dashboard settings	Dashboard settings		
Web content on dashboard files			
Data model settings	Data model settings		
Users can edit data models in the Power BI service (preview)			
Datamart settings	Datamart settings		
Create Datamarts (preview)			
Developer settings	Developer settings		
Allow service principals to create and use profiles	Block Anonymous Authentication		4
Embed content in apps			
Service principals can use Fabric APIs			4
Total			30

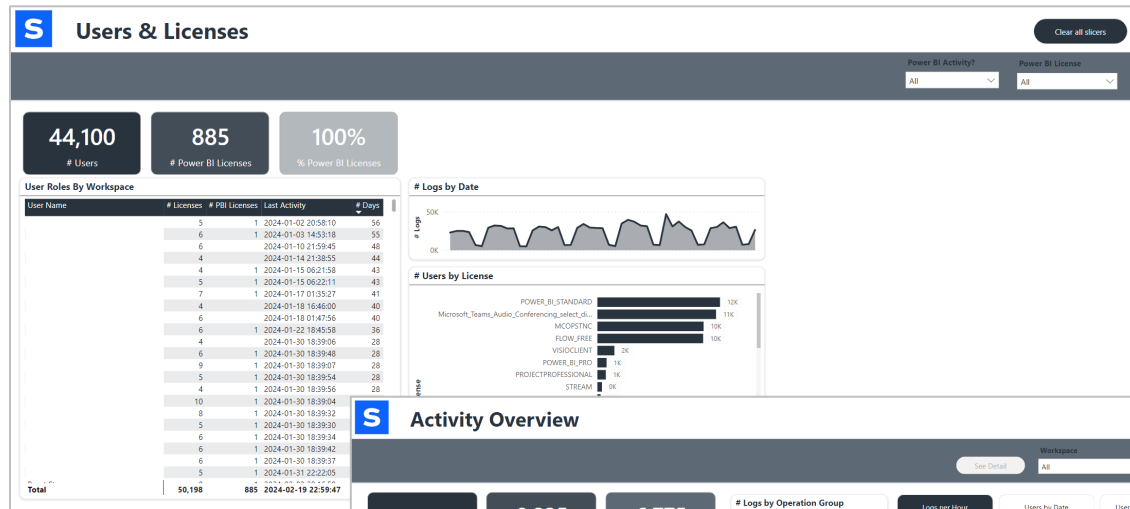
Data Dictionary

- Comprehensive list of all **calculated columns** and **measures** used across the organization
- Encourage developers to **standardize calculations**
- Accelerate development by **facilitating re-use**, as opposed to re-build

Tenant Settings

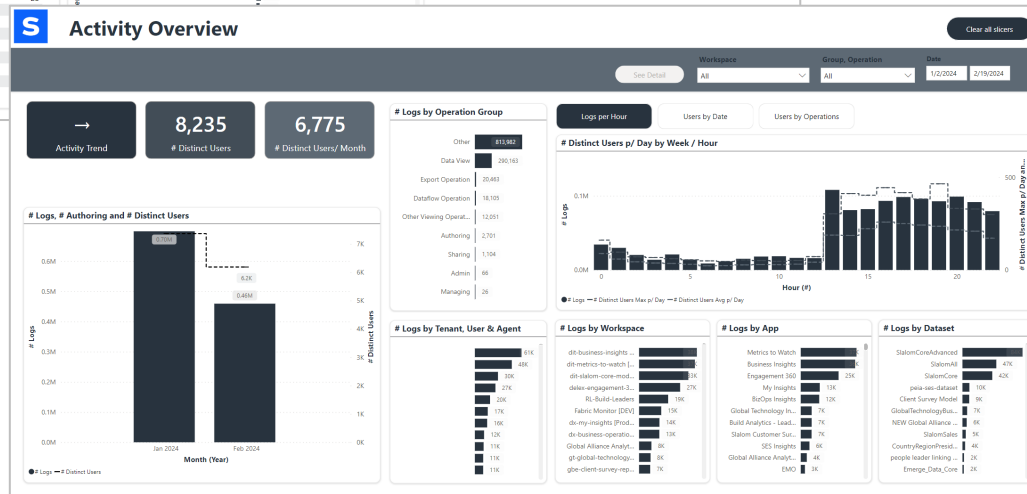
- Surface tenant settings to developers to aid in debugging feature issues
- Skip blind troubleshooting, and proceed to requesting the appropriate permissions from administrators

Enterprise-level Monitoring Dashboards



Users & Licenses

- Review assigned licenses to optimize spend
- Inspect last usage date to intelligently retire unused licenses



Activity Overview

- Monitors overall **Power BI usage**
- Enable admins to **identify popular datasets** and reports for future certification
- Identify **high-usage workspaces**
- Make strides towards **enterprise governance** by identifying ad-hoc data sources

Getting Started

Use Case Workshop

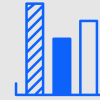
2 Hour use case identification workshop with Business and Data leaders

Monitoring Application Deployment

Engagement to stand up Fabric Monitoring capability

Enterprise Governance Journey

Additional engagement of customized length to mature BI governance principles utilizing the monitoring application



What data is being used across our organization and how? Is it cataloged?



Do we have the appropriate roles & processes set up to properly govern our data?



How do we instill a sense of trust in our data across the enterprise?

Let's connect

Patrick Lafferty

Senior Delivery Principal,
Cloud Enablement

patrick.lafferty@slalom.com
(973) 270-4956

Jordan Hoolachan

Consultant,
Microsoft Data & AI

jordan.hoolachan@slalom.com

slalom

Native Monitoring in Fabric

Multiple experiences with different focuses

Feature	Focus	Additional Cost	History	Details
Admin Portal	Basic usage and inventory		N/A	<ul style="list-style-type: none">Minimal level of insightOnly available to admins
Monitoring Hub	Operational data		30 days	
Fabric Capacity Metrics App	Performance/capacity health		14 days	
Log Analytics Integration	Performance data	Yes	30 days*	<ul style="list-style-type: none">Best-in-class telemetry dataFine-grain event loggingCustomizable data model
Purview Hub	Security/Endorsement		N/A	
Feature Usage and Adoption Report	Usage (Limited)		30 days	<ul style="list-style-type: none">Very limited information as of February 2024

Activity Overview

User Activity and Tenant Catalog

S Activity Overview

Clear all slicers

See Detail

Workspace

All

Group, Operation

All

Date

1/2/2024

2/19/2024



Activity Trend

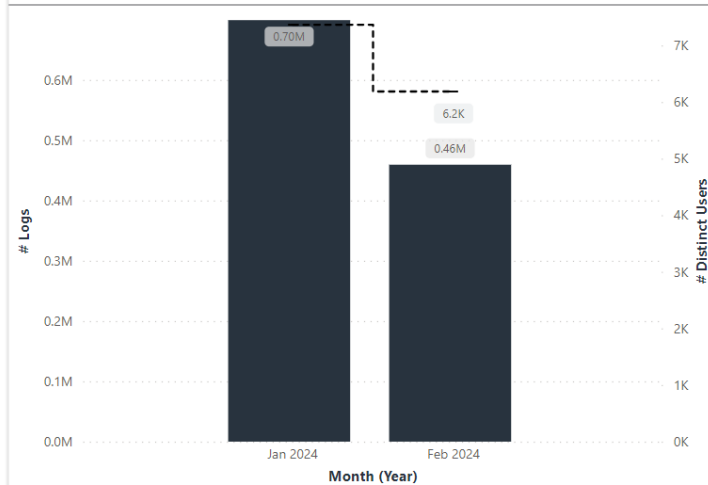
8,235

Distinct Users

6,775

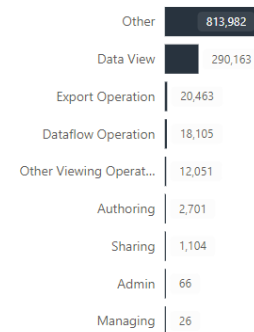
Distinct Users/ Month

Logs, # Authoring and # Distinct Users



● # Logs — # Distinct Users

Logs by Operation Group

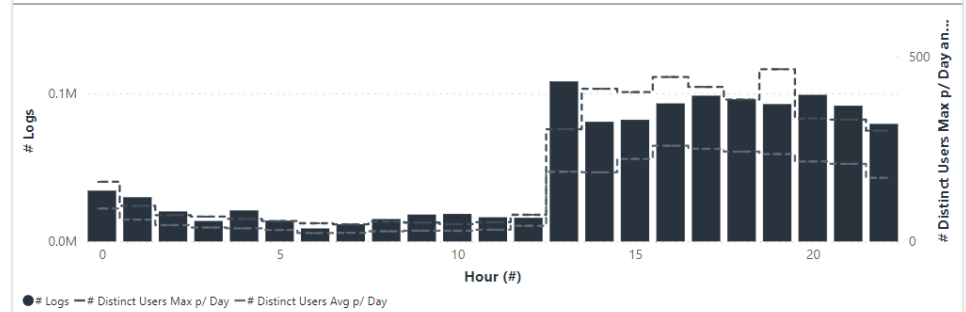


Logs per Hour

Users by Date

Users by Operations

Distinct Users p/ Day by Week / Hour

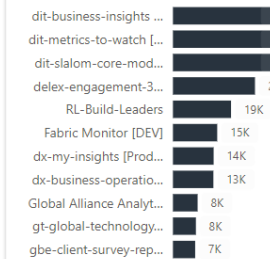


● # Logs — # Distinct Users Max p/ Day — # Distinct Users Avg p/ Day

Logs by Tenant, User & Agent



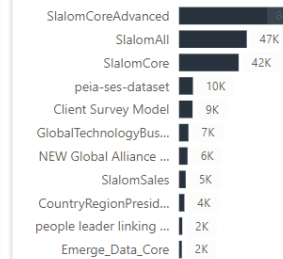
Logs by Workspace



Logs by App

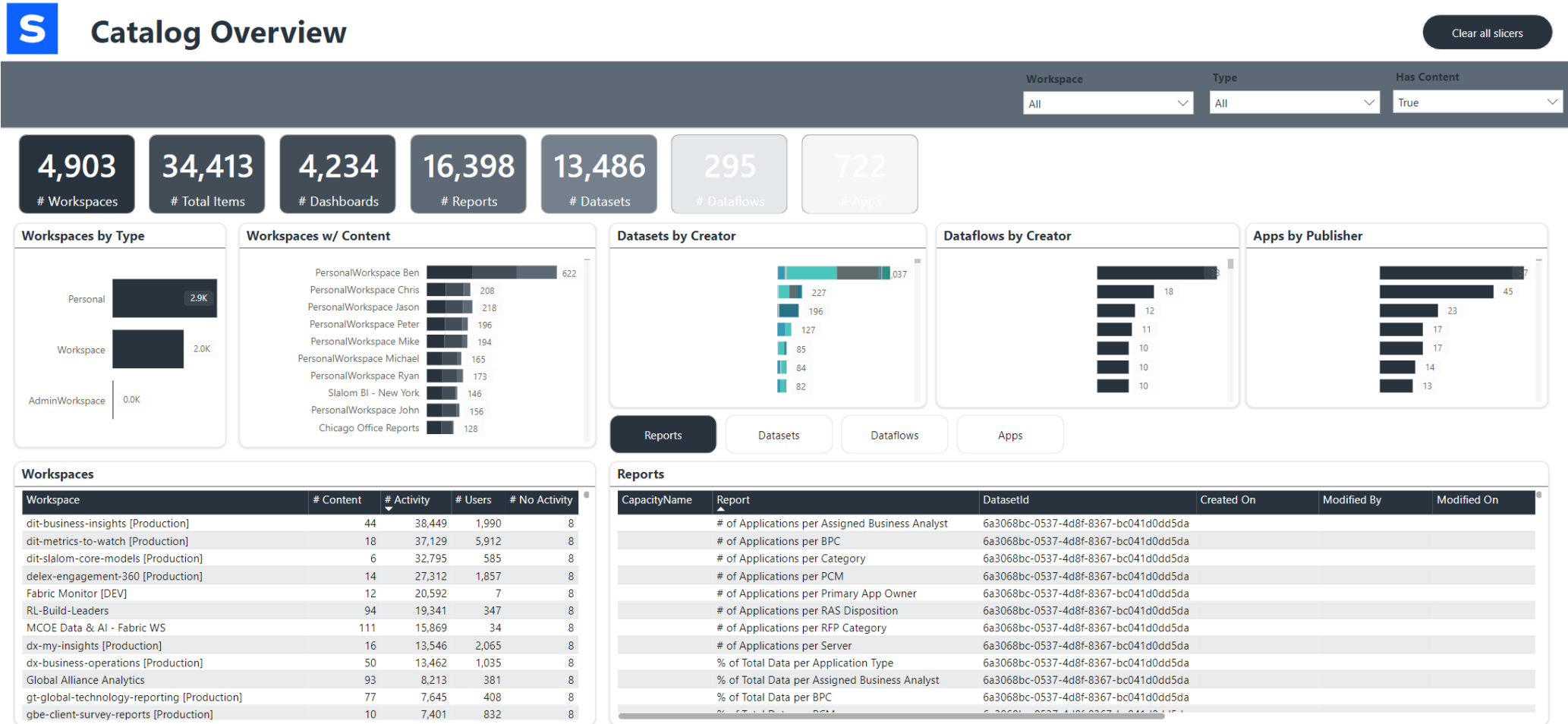


Logs by Dataset



Catalog Overview

User Activity and Tenant Catalog



Data Sources Overview

User Activity and Tenant Catalog

S Data Sources Overview

Clear all slicers

Workspace

Dataset

All

All

10,929

DataSources

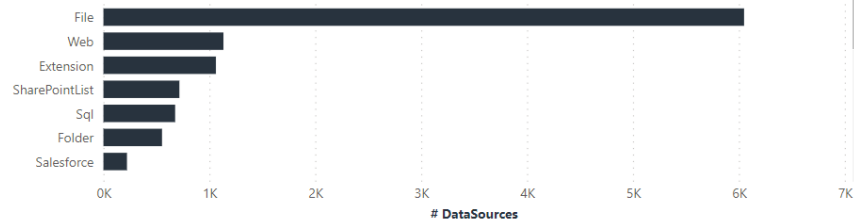
13,486

Datasets

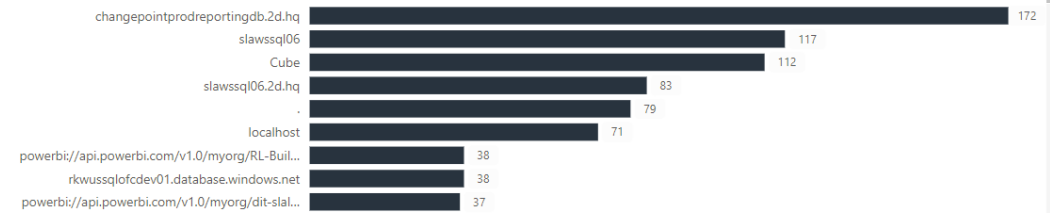
295

Dataflows

Most popular data sources



Datasets by Connection - Server



DataSource Type	Connection - Server	Connection - Database	Connection - Path	Connection - Domain	Connection - URL	Connect
Sql	zsm1m02b1q.database.windows.net	NYIMAAzure				
Sql	zippity	acct				
Sql	zippity	acct				
Sql	zippity	can				
Sql	zippity	gbr				
Sql	zbupe6iuq67evdmg6tewgbbni-zkfw6jwohpoxmh2353ykygva4.datawarehouse.pbidedicated.windows.net	Sales_DW				
Sql	wus-twitterlab.database.windows.net	TwitterDW				
Sql	wus2-twitterlab.database.windows.net	TwitterLab				
Sql	wsf-hackfest.database.usgovcloudapi.net	wsf				
Sql	writebackserver.database.windows.net	Writeback_Testing				
Sql	workspace0817.sql.azure.synapse.net	sqlpool01				
Sql	WIN10-BETH	grcproduction				

Users & Licenses

User Activity and Tenant Catalog



Users & Licenses

Clear all slicers

Power BI Activity?

All

Power BI License

All

44,100

Users

885

Power BI Licenses

100%

% Power BI Licenses

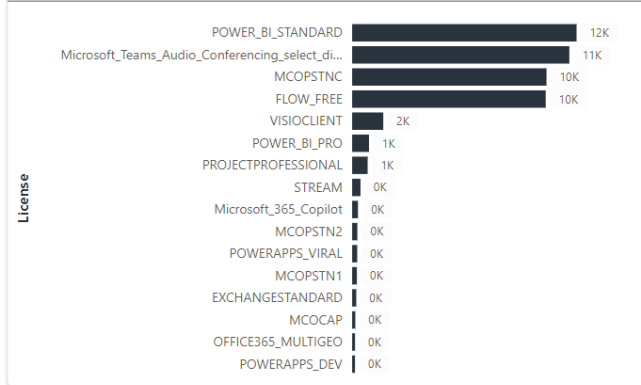
User Roles By Workspace

User Name	# Licenses	# PBI Licenses	Last Activity	# Days
	5	1	2024-01-02 20:58:10	56
	6	1	2024-01-03 14:53:18	55
	6		2024-01-10 21:59:45	48
	4		2024-01-14 21:38:55	44
	4	1	2024-01-15 06:21:58	43
	5	1	2024-01-15 06:22:11	43
	7	1	2024-01-17 01:35:27	41
	4		2024-01-18 16:46:00	40
	6		2024-01-18 01:47:56	40
	6	1	2024-01-22 18:45:58	36
	4		2024-01-30 18:39:06	28
	6	1	2024-01-30 18:39:48	28
	9	1	2024-01-30 18:39:07	28
	5	1	2024-01-30 18:39:54	28
	4	1	2024-01-30 18:39:56	28
	10	1	2024-01-30 18:39:04	28
	8	1	2024-01-30 18:39:32	28
	5	1	2024-01-30 18:39:30	28
	6	1	2024-01-30 18:39:34	28
	6	1	2024-01-30 18:39:42	28
	6	1	2024-01-30 18:39:37	28
	5	1	2024-01-31 22:22:05	27
Total	50,198	885	2024-02-19 22:59:47	8

Logs by Date



Users by License



Measures w/ DAX

Enterprise Data Dictionary

S Measure Details

 Not Certified

Workspace: All | Dataset: All | Endorsement: Certified | Table: All | Measure: All | Hide DAX Show DAX

Measure Details

Dataset	Measure	Description
SlalomCore	Direct Margin and Profit Self Service Template Version	
SlalomCore	Direct Margin with Bench Self Service Template Version	
SlalomCore	Direct Margin with Non-Client Cost of DCOS Team Members YoY Trend Indicator	
SlalomCore	Direct Margin YoY Trend Indicator	
SlalomCore	Direct Profit YoY	
SlalomCore	Direct Profit YoY Trend Indicator	
SlalomCore	Direct Revenue Self Service Template Version	
SlalomCore	E360 Client Selected Font Color	
SlalomCore	E360 EngagementOffice Selected Font Color	
SlalomCore	Engagement Accounts Receivable Current %	
SlalomCore	Engagement Accounts Receivable Over 30 Days Past Due %	
SlalomCore	Engagement Accounts Receivable Under 30 Days Past Due %	
SlalomCore	Engagement Arrivals	
SlalomCore	Engagement Average Bill Rate YoY Trend Indicator	
SlalomCore	Engagement Budget Health Issue Indicator	
SlalomCore	Engagement Budget Health Issue Indicator Flag	
SlalomCore	Engagement Cashflow Health Issue Indicator	
SlalomCore	Engagement Cashflow Health Issue Indicator Flag	
SlalomCore	Engagement Contract Health Issue Indicator	
SlalomCore	Engagement Contract Health Issue Indicator Flag	
SlalomCore	Engagement Contract Limit Amount	
SlalomCore	Engagement Cost Prior to Last Revenue Recognition	
SlalomCore	Engagement Cost Prior to Last Revenue Recognition AUD	
SlalomCore	Engagement Cost Prior to Last Revenue Recognition CAD	
SlalomCore	Engagement Cost Prior to Last Revenue Recognition CHF	
SlalomCore	Engagement Cost Prior to Last Revenue Recognition EUR	
SlalomCore	Engagement Cost Prior to Last Revenue Recognition GBP	
SlalomCore	Engagement Cost Prior to Last Revenue Recognition JPY	
SlalomCore	Engagement Cost Prior to Last Revenue Recognition LOC	
SlalomCore	Engagement Cost Prior to Last Revenue Recognition NZD	

DAX Formula

```

DAX Expression
Engagement Budget Health Issue Indicator = VAR EngagementsInContext =
IF(
HASONEVALUE('EngagementSnapshot'[EngagementKey]),
1,
0
)
VAR IsIssue =
IF(
[Engagement Budget Health Issue Indicator Flag] = 1,
UNICHAR("9650"),
UNICHAR("9679")
)
VAR Result = IF( EngagementsInContext = 0, BLANK(), IsIssue )
RETURN
Result
    
```

Tenant Settings Overview

Tenant Settings

S Tenant Settings Overview

		Enabled?																																																																																													
		All																																																																																													
Setting Group	Tenant Settings																																																																																														
<input type="checkbox"/> Select all <input type="checkbox"/> Admin API settings <input type="checkbox"/> Advanced networking <input type="checkbox"/> App settings <input type="checkbox"/> Audit and usage settings <input type="checkbox"/> Copilot and Azure OpenAI Service ... <input type="checkbox"/> Dashboard settings <input type="checkbox"/> Data model settings <input type="checkbox"/> Datamart settings <input type="checkbox"/> Developer settings <input type="checkbox"/> Discovery settings <input type="checkbox"/> Domain management settings <input type="checkbox"/> Export and sharing settings <input type="checkbox"/> Gen1 dataflow settings <input type="checkbox"/> Git integration <input type="checkbox"/> Help and support settings <input type="checkbox"/> Information protection <input type="checkbox"/> Insights settings <input type="checkbox"/> Integration settings <input type="checkbox"/> Metrics settings <input type="checkbox"/> Microsoft Fabric <input type="checkbox"/> OneLake settings <input type="checkbox"/> Power BI visuals <input type="checkbox"/> Q&A settings <input type="checkbox"/> Quick measure suggestions <input type="checkbox"/> R and Python visuals settings <input type="checkbox"/> Scale-out settings <input type="checkbox"/> ...	<table border="1"> <thead> <tr> <th>Setting Group</th> <th>Is Setting Enabled?</th> <th># Enabled AD Groups</th> </tr> </thead> <tbody> <tr> <td>Admin API settings</td> <td></td> <td>6</td> </tr> <tr> <td>Enhance admin APIs responses with DAX and mashup expressions</td> <td></td> <td>1</td> </tr> <tr> <td>Enhance admin APIs responses with detailed metadata</td> <td></td> <td></td> </tr> <tr> <td>Service principals can access read-only admin APIs</td> <td></td> <td>5</td> </tr> <tr> <td>Advanced networking</td> <td></td> <td></td> </tr> <tr> <td>Azure Private Link</td> <td></td> <td></td> </tr> <tr> <td>Block Public Internet Access</td> <td></td> <td></td> </tr> <tr> <td>App settings</td> <td></td> <td></td> </tr> <tr> <td>Create template organizational apps</td> <td></td> <td></td> </tr> <tr> <td>Publish apps to the entire organization</td> <td></td> <td></td> </tr> <tr> <td>Push apps to end users</td> <td></td> <td></td> </tr> <tr> <td>Audit and usage settings</td> <td></td> <td></td> </tr> <tr> <td>Azure Log Analytics connections for workspace administrators</td> <td></td> <td></td> </tr> <tr> <td>Per-user data in usage metrics for content creators</td> <td></td> <td></td> </tr> <tr> <td>Usage metrics for content creators</td> <td></td> <td></td> </tr> <tr> <td>Copilot and Azure OpenAI Service (preview)</td> <td></td> <td>3</td> </tr> <tr> <td>Data sent to Azure OpenAI can be processed outside your tenant's geographic region, compliance boundary, or national cloud instance</td> <td></td> <td></td> </tr> <tr> <td>Users can use a preview of Copilot and other features powered by Azure OpenAI</td> <td></td> <td>3</td> </tr> <tr> <td>Dashboard settings</td> <td></td> <td></td> </tr> <tr> <td>Web content on dashboard tiles</td> <td></td> <td></td> </tr> <tr> <td>Data model settings</td> <td></td> <td></td> </tr> <tr> <td>Users can edit data models in the Power BI service (preview)</td> <td></td> <td></td> </tr> <tr> <td>Datamart settings</td> <td></td> <td></td> </tr> <tr> <td>Create Datamarts (preview)</td> <td></td> <td></td> </tr> <tr> <td>Developer settings</td> <td></td> <td>4</td> </tr> <tr> <td>Allow service principals to create and use profiles</td> <td></td> <td></td> </tr> <tr> <td>Block ResourceKey Authentication</td> <td></td> <td></td> </tr> <tr> <td>Embed content in apps</td> <td></td> <td></td> </tr> <tr> <td>Service principals can use Fabric APIs</td> <td></td> <td>4</td> </tr> <tr> <td>Total</td> <td></td> <td>30</td> </tr> </tbody> </table>	Setting Group	Is Setting Enabled?	# Enabled AD Groups	Admin API settings		6	Enhance admin APIs responses with DAX and mashup expressions		1	Enhance admin APIs responses with detailed metadata			Service principals can access read-only admin APIs		5	Advanced networking			Azure Private Link			Block Public Internet Access			App settings			Create template organizational apps			Publish apps to the entire organization			Push apps to end users			Audit and usage settings			Azure Log Analytics connections for workspace administrators			Per-user data in usage metrics for content creators			Usage metrics for content creators			Copilot and Azure OpenAI Service (preview)		3	Data sent to Azure OpenAI can be processed outside your tenant's geographic region, compliance boundary, or national cloud instance			Users can use a preview of Copilot and other features powered by Azure OpenAI		3	Dashboard settings			Web content on dashboard tiles			Data model settings			Users can edit data models in the Power BI service (preview)			Datamart settings			Create Datamarts (preview)			Developer settings		4	Allow service principals to create and use profiles			Block ResourceKey Authentication			Embed content in apps			Service principals can use Fabric APIs		4	Total		30	
Setting Group	Is Setting Enabled?	# Enabled AD Groups																																																																																													
Admin API settings		6																																																																																													
Enhance admin APIs responses with DAX and mashup expressions		1																																																																																													
Enhance admin APIs responses with detailed metadata																																																																																															
Service principals can access read-only admin APIs		5																																																																																													
Advanced networking																																																																																															
Azure Private Link																																																																																															
Block Public Internet Access																																																																																															
App settings																																																																																															
Create template organizational apps																																																																																															
Publish apps to the entire organization																																																																																															
Push apps to end users																																																																																															
Audit and usage settings																																																																																															
Azure Log Analytics connections for workspace administrators																																																																																															
Per-user data in usage metrics for content creators																																																																																															
Usage metrics for content creators																																																																																															
Copilot and Azure OpenAI Service (preview)		3																																																																																													
Data sent to Azure OpenAI can be processed outside your tenant's geographic region, compliance boundary, or national cloud instance																																																																																															
Users can use a preview of Copilot and other features powered by Azure OpenAI		3																																																																																													
Dashboard settings																																																																																															
Web content on dashboard tiles																																																																																															
Data model settings																																																																																															
Users can edit data models in the Power BI service (preview)																																																																																															
Datamart settings																																																																																															
Create Datamarts (preview)																																																																																															
Developer settings		4																																																																																													
Allow service principals to create and use profiles																																																																																															
Block ResourceKey Authentication																																																																																															
Embed content in apps																																																																																															
Service principals can use Fabric APIs		4																																																																																													
Total		30																																																																																													

Available Data Elements

Lakehouse Structure

The screenshot displays the Microsoft Fabric Lakehouse Explorer interface. At the top, there are navigation tabs for 'Home' and 'Reporting'. Below the tabs, there are four action buttons: 'New SQL query', 'New visual query', 'New report', and 'New measure'. A notification banner states: 'This lakehouse automatically adds new objects to its default Power BI semantic model. Don't want to sync?'. The main area is titled 'Explorer' and shows a tree view of the lakehouse structure. The tree is expanded to show the 'Tables' folder under the 'dbo' schema. The following table lists the available data elements:

Element Name
Warehouse
FabricMonitor
Schemas
dbo
Tables
pbi_activity
pbi_apps
pbi_capacities
pbi_columns
pbi_dashboard_tiles
pbi_dashboards
pbi_dataflows
pbi_datamarts
pbi_dataset_datasources
pbi_dataset_datasources_parsed
pbi_dataset_expressions
pbi_datasets
pbi_datasources
pbi_measures
pbi_refreshables
pbi_reports
pbi_scan_status
pbi_subscribed_skus
pbi_table_sources
pbi_tables
pbi_tenant_setting_groups
pbi_tenant_setting_properties
pbi_tenant_settings
pbi_upstream_dataflows

At the bottom right of the Explorer panel, there is a status indicator: '(9 sec 760 ms)'.