



TRAIN WITH

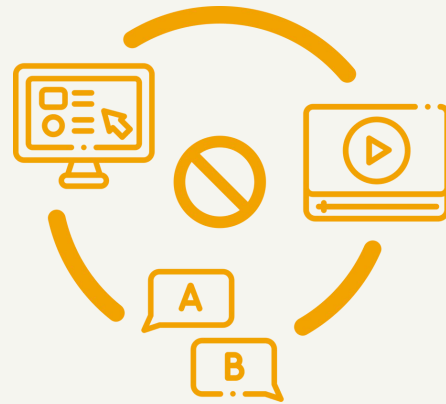
NO PAIN

MISSION

We support educational institutions and companies in the management and delivery of synchronous and asynchronous training using the most innovative technologies, simplifying the work of teachers and students



THE PROBLEMS OF TRAINING IN THE DIGITAL ERA



NON-INTEGRATED SERVICES

FAD makes use of various tools; their integration into a single platform is essential to make training more effective.



CERTIFICATION OF PARTICIPATION

Certifying learning and verifying learner attendance is a requirement for institutes and companies interfacing with FAD



LOSS OF SOCIALITY

FAD has drastically reduced the space for socializing. Interaction between learners and trainers turns out to be key component of an effective training experience



CREATION OF COURSES

Creating a course is a complex process. Continuous and dynamic updating of content must keep up with the speed of change in the world of work



Whoteach is a B2B intelligent digital learning platform, equipped with artificial intelligence, that helps educational institutions and enterprises deliver and create high-quality online courses while using fewer resources.



THE MODULES OF WhTeach



Learning Management System

The learning management platform that allows you to create and manage quality courses and content asynchronously



Recommender System

The AI-powered Recommender System that empowers teachers to effortlessly create and update courses with speed, efficiency, and cost-effectiveness.



Live

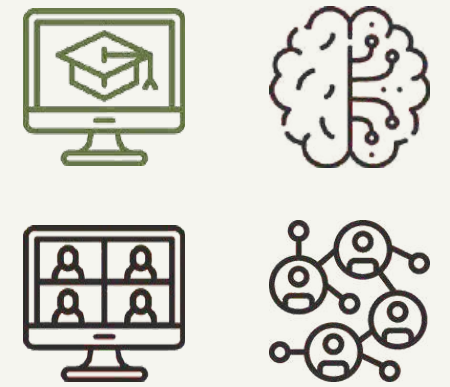
A virtual classroom for synchronous lectures, equipped with numerous features for interactive learning and collaboration between students and teachers



Generative AI

The Generative AI designed specifically to generate new training materials: not only texts but also slides, quizzes and conceptual maps

Learning Management System



Learning Management System (LMS) is a learning management platform that enables the creation, delivery and management of quality courses and contents asynchronously

- Structured in categories
- Flexibility in organizing content
- Upload of material in any format
- Verification of learning through quizzes of various kinds
- Tracking of learning through tracking systems and timers, with the possibility of issuing certificates (complies with ANPAL requirements for funded training)

Live

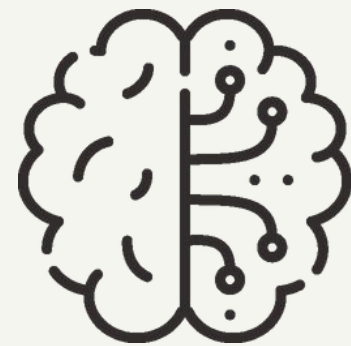


The virtual (Live) classroom for synchronous lectures, equipped with numerous features for interactive learning and collaboration between students and teachers

- Basic functions: public chat, screen sharing, lecture recording, polls, virtual whiteboard, shared notes
- Break Out Room creation
- Attendance tracking and report generation in accordance with the requirements of entities, such as Forma.Temp and Regione Lombardia

Artificial Intelligence

Recommender System

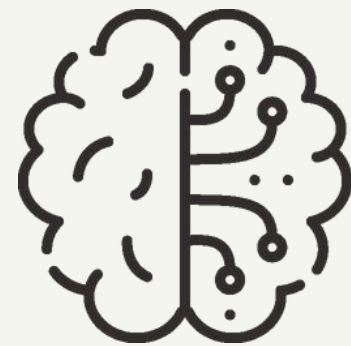


The Artificial Intelligence-based Recommender System helps teachers create and update courses easily, quickly and inexpensively. The system supports teachers in searching and selecting teaching material, using resources from internal or external repositories.

- Identifies and suggests the most relevant content for course creation, according to faculty input
- Access to training resources and activities found on internal or external repositories
- Heavy use of metadata and learning algorithms
- Continuous improvement of Artificial Intelligence through user feedback

Artificial Intelligence

Generative AI



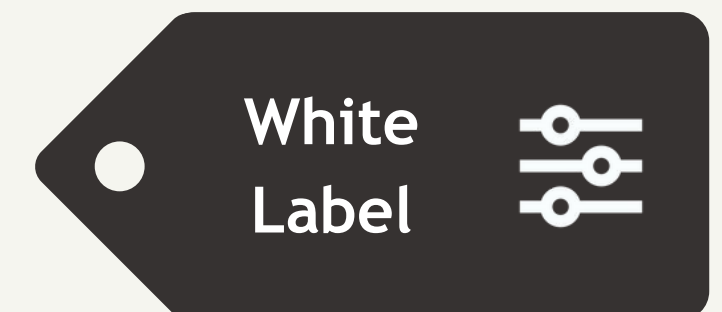
Our generative AI system supports trainers in the creation of learning content: from texts to slides, you will have new and original content in a few simple steps.

- Generating slides from a prompt
- Ability to specify number of slides, allowing you to vary the complexity of the course
- Internal memory allowing you to control content so that it is not repeated
- Ability to generate slides in HTML and PPT format
- Underlines key words in bold and develops diagrams and quizzes with final evaluation



OFFERS

- Annual user license
- Flexible payment based on active users
- In Cloud or On Premise
- WhoTeach Brand or in White Label



Our strengths

Artificial Intelligence and Sources

Simplify the creation of content and educational paths thanks to our intelligent features.

Customization

Our team can make ad hoc customizations. The structure of categories can be modified to make the information flow more smoothly and the architecture of the platform organized according to specific needs. You can choose to use your platform in classic mode or customize it with your own logo (WhiteLabel).

Reports

Our platform is perfect for training institutions. Thanks to our configurable Reports you will be able to certify the attendance of course participants, an essential requirement for many funding bodies (E.g. Forma.Temp, Lombardy Region).

Clients' assistance

A team composed of experts in the IT area, with expertise in human-computer interaction and Artificial Intelligence, always at your disposal and ready to assist you with any questions or problems.



WhoTeach

by Social Thingum

OVERALL

★ 4.5

Ease of Use ★ 4.1

Customer Service ★ 5.0

Features ★ 4.5

Value for Money ★ 4.6

[VIEW PROFILE](#)

- Source: Capterra



info@whoteach.it



02 83538781



<https://www.whoteach.it>



Viale Umbria 63, 20135 - Milano