

# Noventiq HR Agent

## Novia - Powered by Noventiq

AI-powered assistant that streamlines repetitive and manual HR workflows using Generative AI and LLMs. Reduces administrative burden on HR teams while improving employee experience through intuitive, compliant, and efficient digital processes.

### Core Workflows

#### Leave Management Process

- 1. Leave Request Submission** - Employees submit requests with duration, type, and reason;
- 2. Policy Compliance Check** - HR Agent cross-checks against HR policy; violations auto-rejected with rationale;
- 3. Leave Balance Check** - System fetches current balance from SharePoint (DarwinBox API integration upcoming);
- 4. Approval Workflow** - If balance allows, request routed to reporting manager (SharePoint; DarwinBox to follow);
- 5. Notification & Balance Update** - Email notification sent; balance updated upon approval.

#### Reimbursement Workflow

- 1. Bill Upload** - Employee uploads bill image via portal;
- 2. AI-Driven Data Extraction** - Agent uses OCR/AI to extract Invoice ID, Date, Amount, etc.
- 3. User Confirmation** - Extracted fields shown for validation before submission.
- 4. Manager Approval** - Auto-forwarded to manager for approval; confirmation sent on approval.
- 5. Processing** - Approved reimbursements processed and tracked.

# Customer Benefits

## Reimbursement Workflow

- ▶ End-to-end automation of leave lifecycle;
- ▶ Eliminates policy breaches with built-in compliance engine;
- ▶ Transparent approval and notification process.

## Effortless Reimbursement Handling

- ▶ Simple bill upload and smart field recognition;
- ▶ Reduces human error and processing delays;
- ▶ Real-time updates keep employees informed.

## Value Proposition

- ▶ **Boost Efficiency:** Automate manual HR operations and reduce processing time;
- ▶ **Ensure Compliance:** Aligns every request with internal policies;
- ▶ **Employee-Centric:** Minimizes friction in leave and claim processes;
- ▶ **Modular Integration:** Ready for DarwinBox API, scalable to other HR systems.

# Implementation & Investment

## Professional Services Deployment Scope

Phase	Duration	Key Deliverables
Discovery & Planning	3-5 days	Process mapping, stakeholder workshops, integration plan
Design & Configuration	7-10 days	UI/UX configuration, rule engine setup, SharePoint/ DarwinBox API connector design
Development & Integration	10-15 days	API connector setup, data mapping, role-based access configuration
Testing & UAT	5-7 days	Test cases & logs, UAT sign-off, compliance checklist
Go-Live & Enablement	3-4 days	Go-live checklist, end-user documentation, training recordings
Support & Enhancements	Optional	Post-deployment managed support for 1-3 months

**Total Timeline:** 4-5 weeks end-to-end

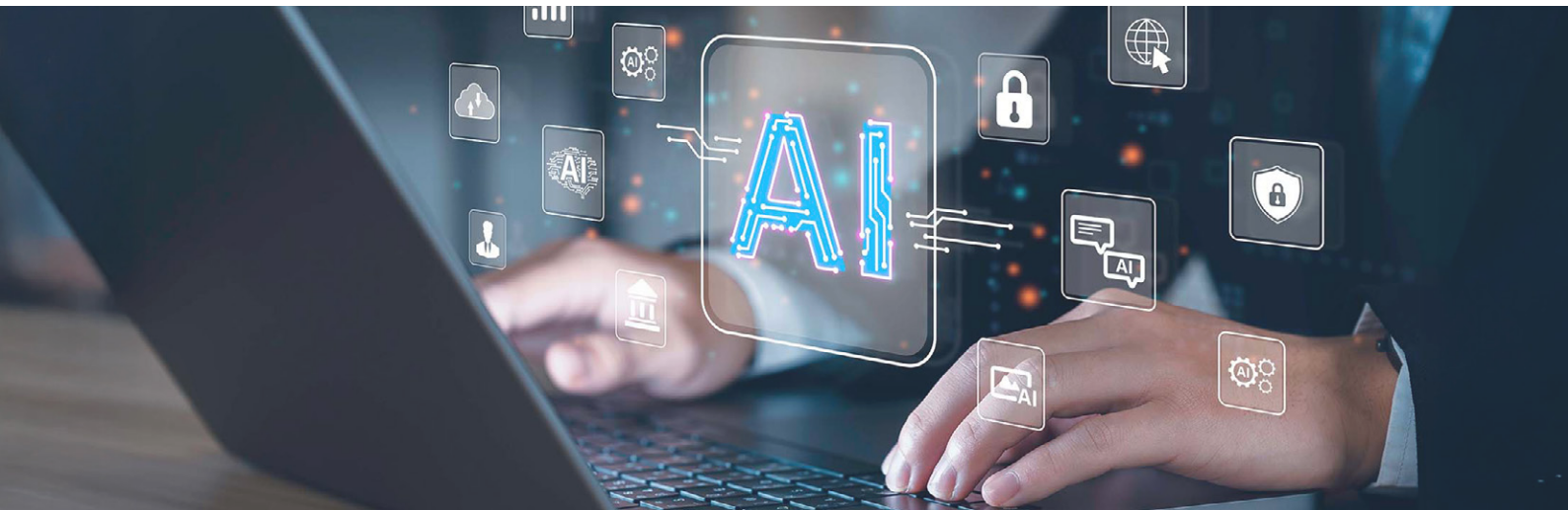
# Investment Structure

Item	Cost (INR)
Professional Services (Fixed)	₹6,50,000 - ₹8,00,000
Optional 1-Month Support Add-on	₹1,50,000
Additional Integrations (beyond DarwinBox/SharePoint)	Priced on scope

**NOTE:** Final pricing dependent on complexity, user base size, and custom workflow depth.

## Why Choose Noventiq?

- ▶ Built on Microsoft Azure OpenAI & LLMs;
- ▶ Easily integrates with existing SharePoint & DarwinBox platforms;
- ▶ Proven enterprise implementation capability;
- ▶ Customizable workflows for specific organizational needs.



**Ready to Transform Your HR Operations?**

**Request Demo:**

Custom proposal tailored to your HR landscape

✉ [india@noventiq.com](mailto:india@noventiq.com)

