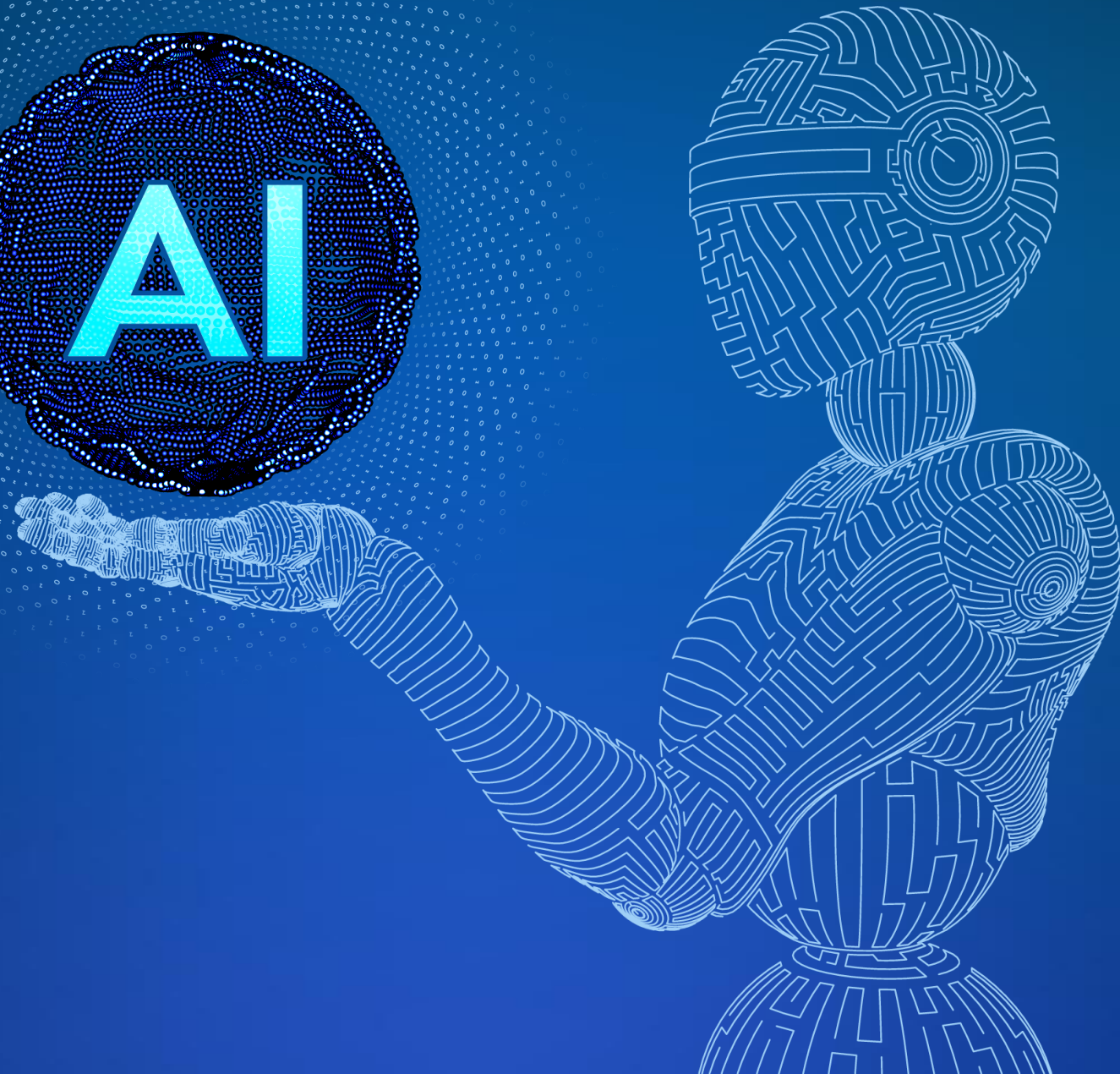
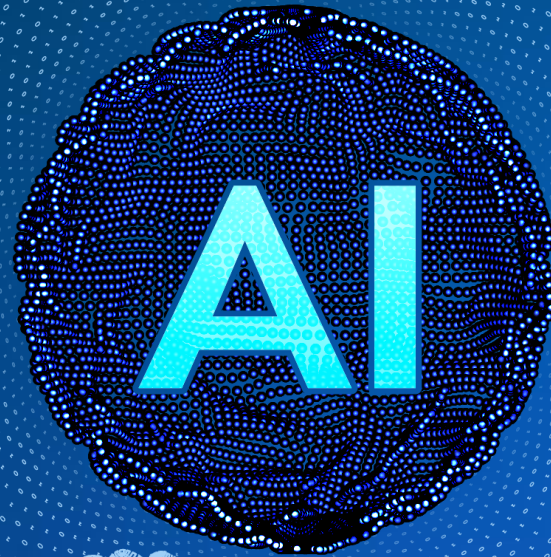




# Sonata Responsible GenAI





# GenAI

The emergence of **GenAI** has encouraged leaders across organizations to embark on a mission to reimagine their operations to enhance productivity, efficiencies & speed time to market sonata is helping enterprise customers across the global to kick-start their **GenAI** journey.

# Responsible-first GenAI

Sonata has recently introduced **Harmoni.AI**, an innovative responsible-first GenAI offering that embeds ethics, privacy, security and compliance at its core. This comprehensive platform comprises a range of industry solutions, service delivery platforms, and accelerators, all powered by GenAI.



# Harmoni.AI

**Harmoni.AI** is a holistic platform for **GenAI**, backed by a robust data governance and acceleration engine.

It offers the flexibility of using industry leading language models (LLMs) to facilitate seamless adoption and faster time-to-market. Sonata has also developed six service delivery platforms, industry use case libraries and acceleration bots

SONATA



SONATA SOFTWARE

# Envisioning Workshop

Creating a shared perspective across leadership, business & technology is critical as enterprises embark on their GenAI journey. Sonata has curated an 'Envisioning workshop' to introduce the **Harmoni.AI** offering & facilitate enterprises kickstart their GenAI journey. Anchored through an Industry led and Design thinking approach, the workshop will leverage Gen AI Industry themes to identify client specific Gen AI interventions & potential business impact.





The outcome of the Envisioning workshop will be a set of prioritized use cases, Harmoni.AI Realization and a unified Gen AI COE construct to kick off pilots and scale for the enterprise.

**For more details,**  
please contact : [info@sonata-software.com](mailto:info@sonata-software.com) |  
[www.sonata-software.com](http://www.sonata-software.com) |

---