



## ENDPOINT MANAGEMENT BY SPIRIT/21

We help companies integrating mobile devices as an essential part of their process and IT landscape – securely and effectively. In this way, we contribute to efficiency with our enterprise mobility solutions.

**FLEXIBLE  
& MOBILE**

## SPIRIT/21

One of the leading medium-sized IT consulting and service companies with more than 20 years of experience in the IT business.

  
**500**  
permanent employees

**10**  
Locations  
(DACH)

  
**CUSTOMERS**  
from medium-sized companies to corporate groups

ca. **80Mio. €**  
Revenue (2020)

 **all IT-SERVICES**  
from a single source

## WE'RE IN THE UEM-BUSINESS DRIVER'S SEAT! ROUTINED IN OPERATION



Administering  
**190.000**  
devices



Hold over  
**150**  
product certifications



Manage  
**40.000**  
distributed in-house  
applications (since 2018)



Performed over  
**32.000**  
Changes (seit 2016)

## AT HOME IN ENTERPRISE ENVIRONMENTS



Extensive experience with  
**EMM-SYSTEMEN**  
(since 2007)



**> 1Mio**  
device activations  
performed



**250.000**  
2nd Level Tickets  
resolved (since 2016)



**VIP**  
Support

## SOLUTION COMPETENCE



**> 300.000**  
Lines of  
automation code



In-house development  
team for individual  
**SOLUTIONS**



**APPLICATION  
LIFECYCLE**  
Management



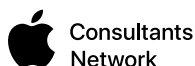
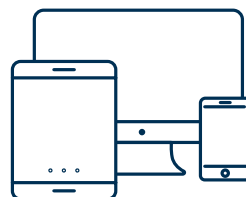
Added value for the  
**DESKLESS  
WORKFORCE**

## EXPERTS IN ENTERPRISE DEVICE MANAGEMENT

Management of  
**122.000**  
iPhones

**15.000**  
iPads

**2.500**  
MacBooks



**MANAGED SERVICES ■ CONSULTING ■ SOLUTIONS ■ TRAINING**

✉ [uem@spirit21.com](mailto:uem@spirit21.com)



+49 170 588 9967



<https://spirit21.com>

