



A Women Owned/Women Led Company

Microsoft 365 Copilot Flight Plan: Take Off Deployment



Infrastructure Azure
Data & AI Azure
Digital & App Innovation Azure
Modern Work
Security

Competencies and Specializations



Adoption and Change Management
AI and Machine Learning on Microsoft Azure
Analytics on Azure
Azure Virtual Desktop
Data Warehouse Migration to Azure
Identity and Access Management
Infra and Database Migration to Azure
Teamwork Deployment
Threat Protection



Infrastructure Azure
Data & AI Azure
Digital & App Innovation Azure
Modern Work
Security



The Problem

Microsoft 365 Copilot is a whole new way to work thanks to the integration of AI into our normal business tasks that allow us to be more productive and bring forth new insights from the documents we interact with. These new capabilities also bring challenges to adoption, security, and compliance within our environments.

Organizations may find it difficult to maintain consistent controls and policies for interacting with Microsoft 365 Copilot and never realize the potential benefits without introducing significant risk. The issues are around how to:

- Maximizing the business value of Microsoft 365 Copilot
- Handling increased data compliance and security risks
- Setting boundaries and policies for usage
- Steering innovation and integrations with copilot
- Monitoring data access and exfiltration



The Solution

Spyglass's **Microsoft 365 Copilot Take Off (Deployment)** is focused on achieving three things: protecting data and identities, training, and support.

- **Data Governance**

- Data Loss Prevention and Retention
- Labelling and Classification
- Insider Risk Management
- Data Permission Review and remediation

- **Identity Governance**

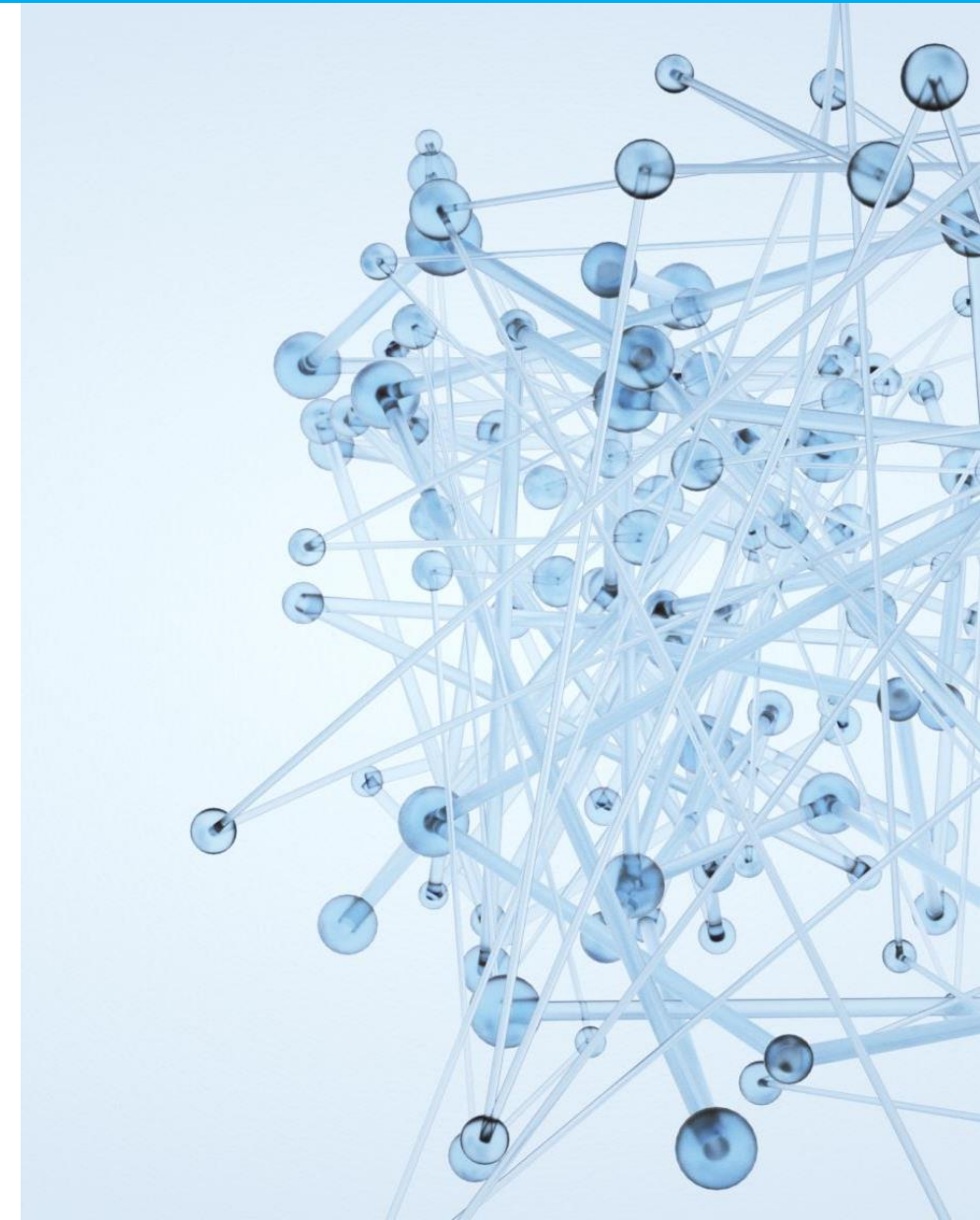
- RBAC
- Conditional Access Policies
- External Access and Sharing

- **Training and Support**

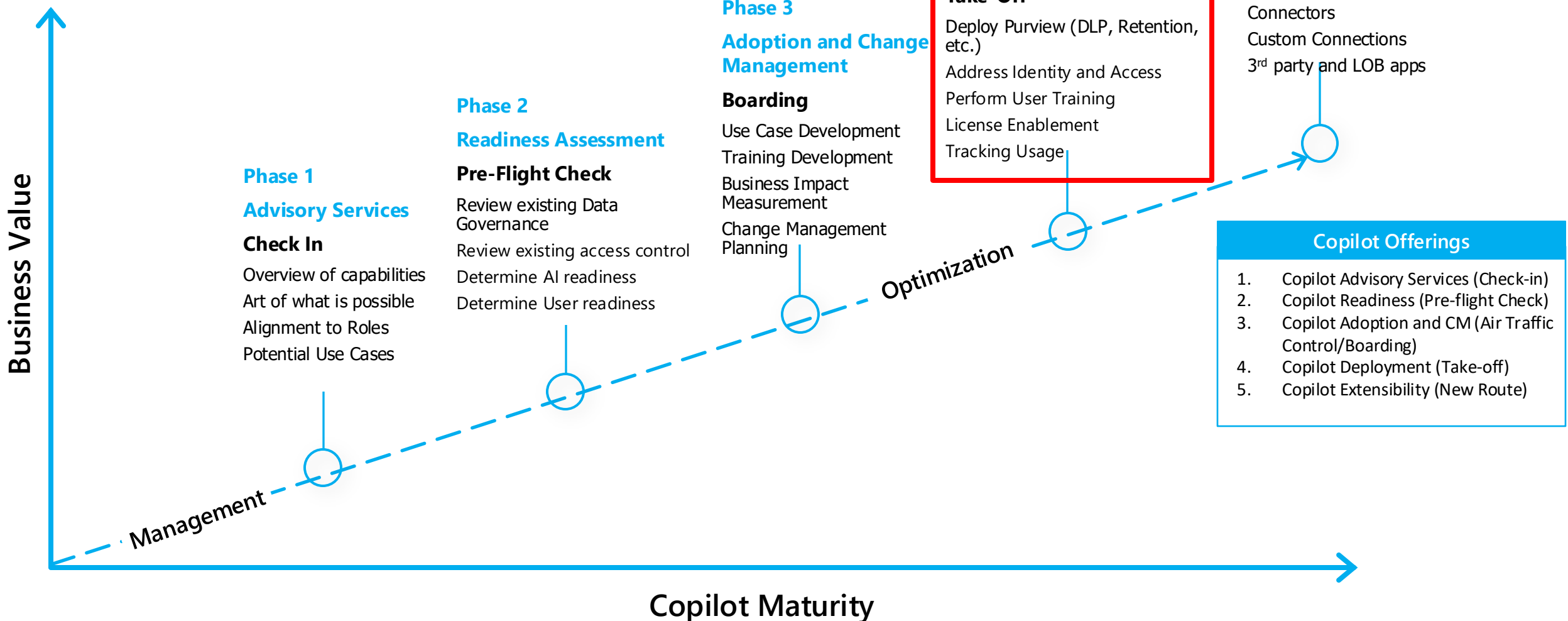
- Train Users, Admins and Support staff.
- Usage Reporting
- **Chatbot creation for Microsoft 365 Copilot Support**

Final Deliverables

- Configuration and Support Docs
- Training



Microsoft 365 Copilot Flight Plan to Secured Deployments



Phase 4: Copilot Take-off (Deployment)

- Define the Data Governance controls required to protect the data in scope of Copilot
- Initial or expanded deployment of Purview components
 - DLP (up to 5 out of box policies with 1 revision for fine tuning)
 - Retention (up to 3 policies)
 - Sensitivity Labels (up to 4)
 - Retention Labels (up to 3)
 - Setup Insider Risk Management (up to 2 policies (no HR or Badging))
- Addressing Identity and Access controls across the Entra ID landscape
 - Role Based Access Control (RBAC)
 - Sharing
 - Conditional Access Policies (Up to 5 policies)
 - External Access
- Perform User and Admin Training (up to 3 recorded sessions)
- Create Chatbot to help with support questions
- Document creation
- License Enablement
- Tracking Usage to evaluate success





Thank You

info@spyglassmtg.com