



A Women Owned/Women Led Company

Copilot for Microsoft 365 Flight Plan: Take Off Deployment



Infrastructure Azure
Data & AI Azure
Digital & App Innovation Azure
Modern Work
Security

Competencies and Specializations



Microsoft
Advanced Specializations

- Adoption and Change Management
- AI and Machine Learning on Microsoft Azure
- Analytics on Azure
- Azure Virtual Desktop
- Data Warehouse Migration to Azure
- Identity and Access Management
- Infra and Database Migration to Azure
- Teamwork Deployment
- Threat Protection



Microsoft
PowerBI Partner



Microsoft
Solutions Partner

- Infrastructure Azure
- Data & AI Azure
- Digital & App Innovation Azure
- Modern Work
- Security



PARTNER SUCCESS SERIES
OEA Advanced
Partner



MICROSOFT IN A DAY PROGRAM
Microsoft
Delivery Partner
App in a Day



Copilot for Microsoft 365
Jumpstart Partner



Microsoft
FAST TRACK
READY PARTNER



Microsoft
Cloud Solution Provider

The Problem

Copilot for Microsoft 365 is a whole new way to work thanks to the integration of AI into our normal business tasks that allow us to be more productive and bring forth new insights from the documents we interact with. These new capabilities also bring challenges to adoption, security, and compliance within our environments.

Organizations may find it difficult to maintain consistent controls and policies for interacting with Copilot for Microsoft 365 and never realize the potential benefits without introducing significant risk. The issues are around how to:

- Maximizing the business value of Copilot for Microsoft 365
- Handling increased data compliance and security risks
- Setting boundaries and policies for usage
- Steering innovation and integrations with copilot
- Monitoring data access and exfiltration



The Solution

Spyglass's **Copilot for Microsoft 365 Take Off (Deployment)** is focused on achieving three things: protecting data and identities, training, and support.

- **Data Governance**

- Data Loss Prevention and Retention
- Labelling and Classification
- Insider Risk Management
- Data Permission Review and remediation

- **Identity Governance**

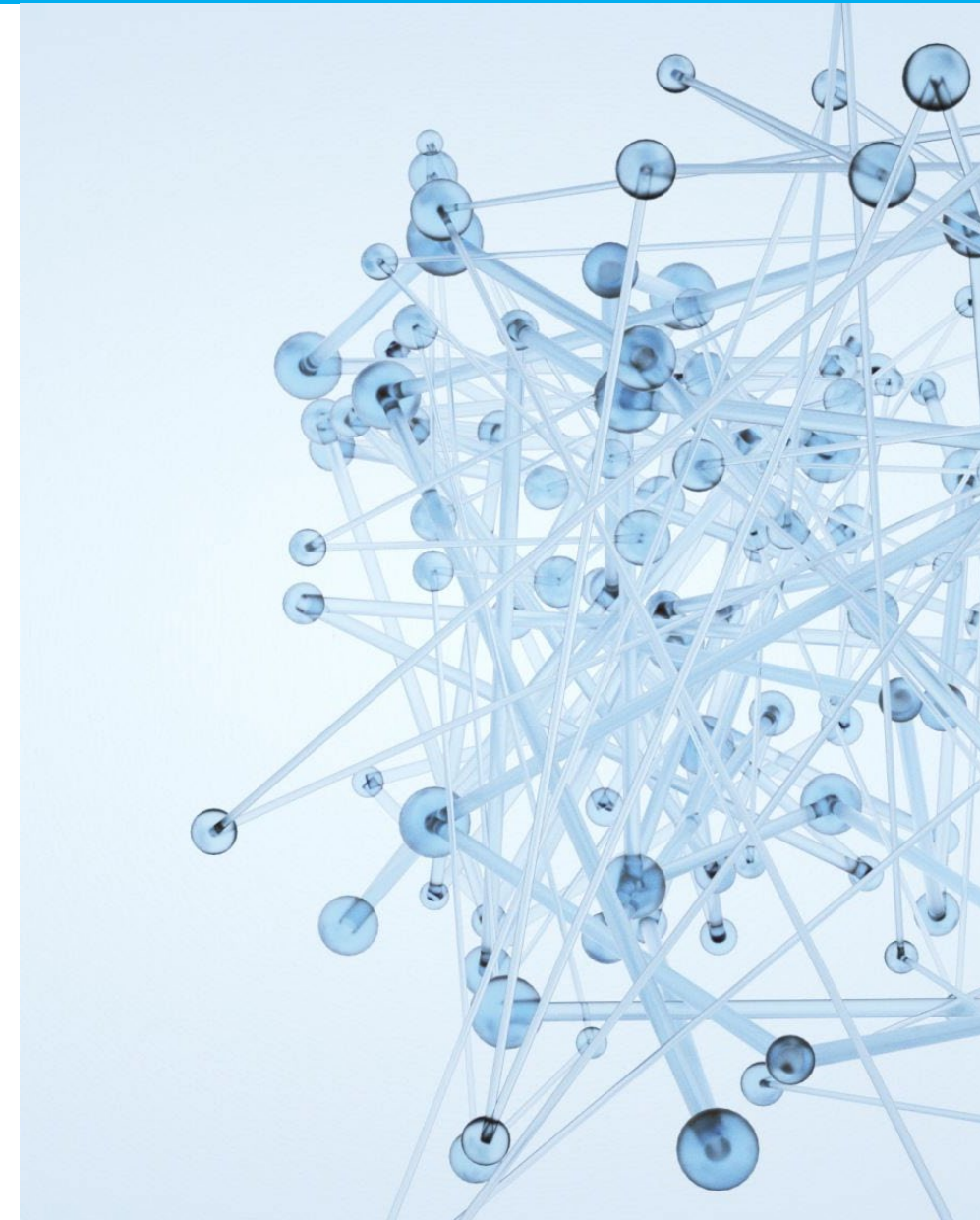
- RBAC
- Conditional Access Policies
- External Access and Sharing

- **Training and Support**

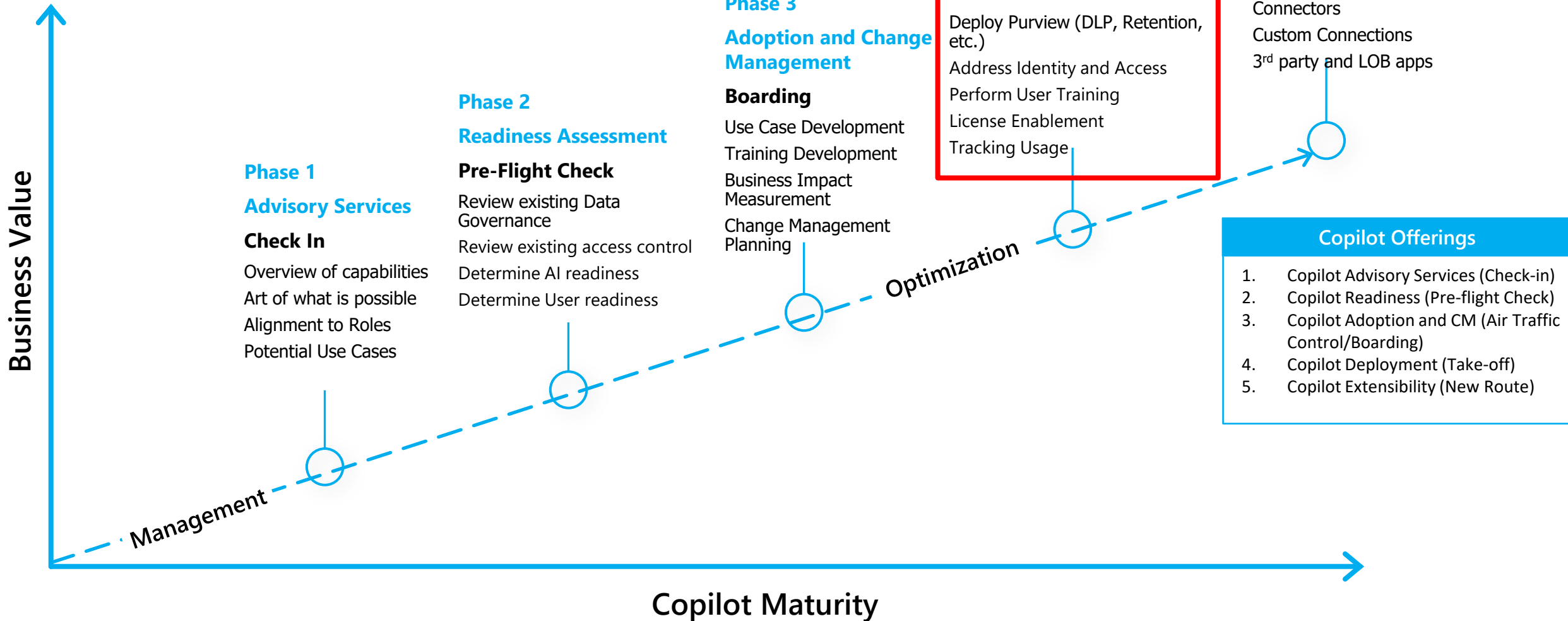
- Train Users, Admins and Support staff.
- Usage Reporting
- **Chatbot creation for Copilot for Microsoft 365 Support**

Final Deliverables

- Configuration and Support Docs
- Training



Copilot for Microsoft 365 Flight Plan to Secured Deployments



Phase 4: Copilot Take-off (Deployment)

- Define the Data Governance controls required to protect the data in scope of Copilot
- Initial or expanded deployment of Purview components
 - DLP (up to 5 out of box policies with 1 revision for fine tuning)
 - Retention (up to 3 policies)
 - Sensitivity Labels (up to 4)
 - Retention Labels (up to 3)
 - Setup Insider Risk Management (up to 2 policies (no HR or Badging))
- Addressing Identity and Access controls across the Entra ID landscape
 - Role Based Access Control (RBAC)
 - Sharing
 - Conditional Access Policies (Up to 5 policies)
 - External Access
- Perform User and Admin Training (up to 3 recorded sessions)
- Create Chatbot to help with support questions
- Document creation
- License Enablement
- Tracking Usage to evaluate success





Thank You

info@spyglassmtg.com