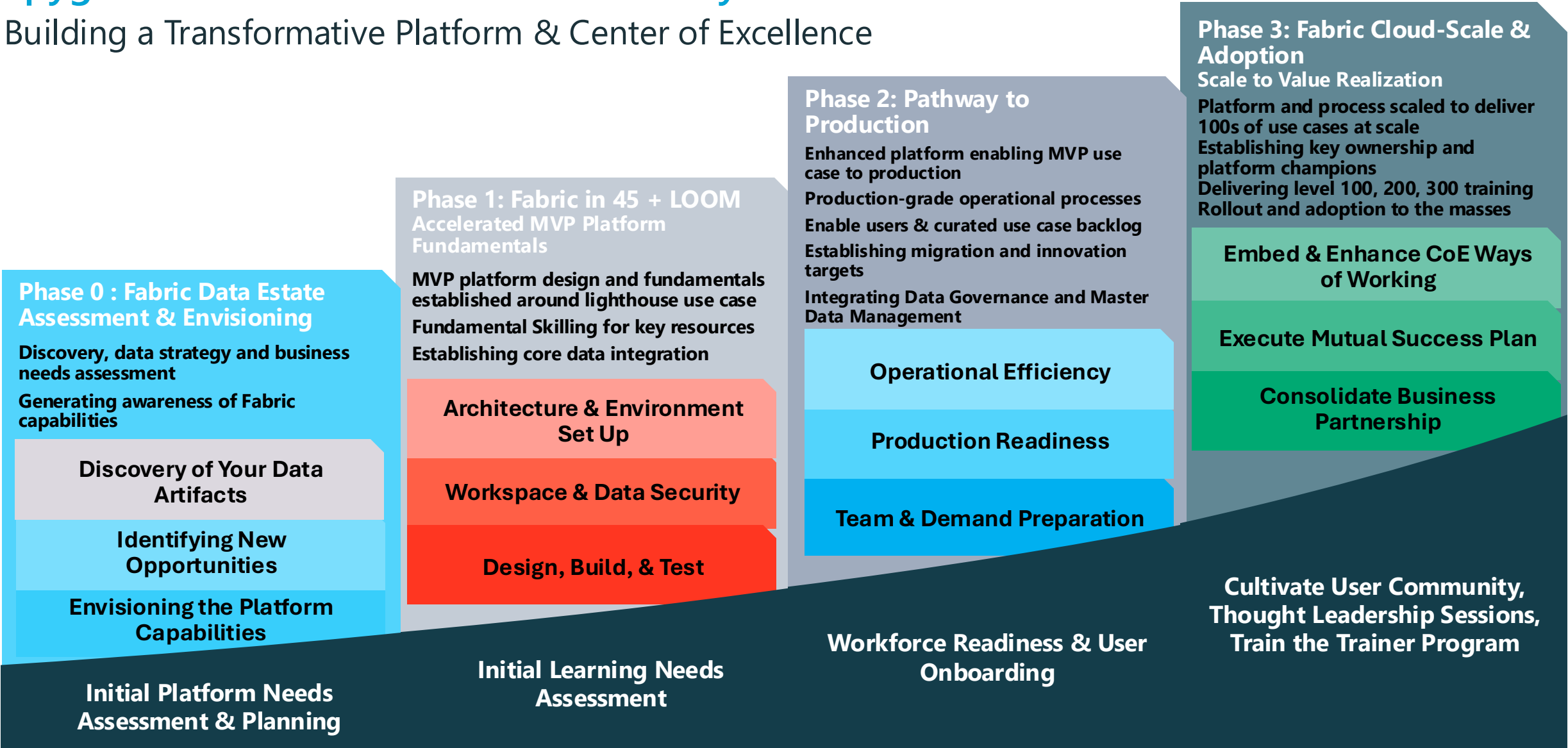


Spyglass MTG Data & AI

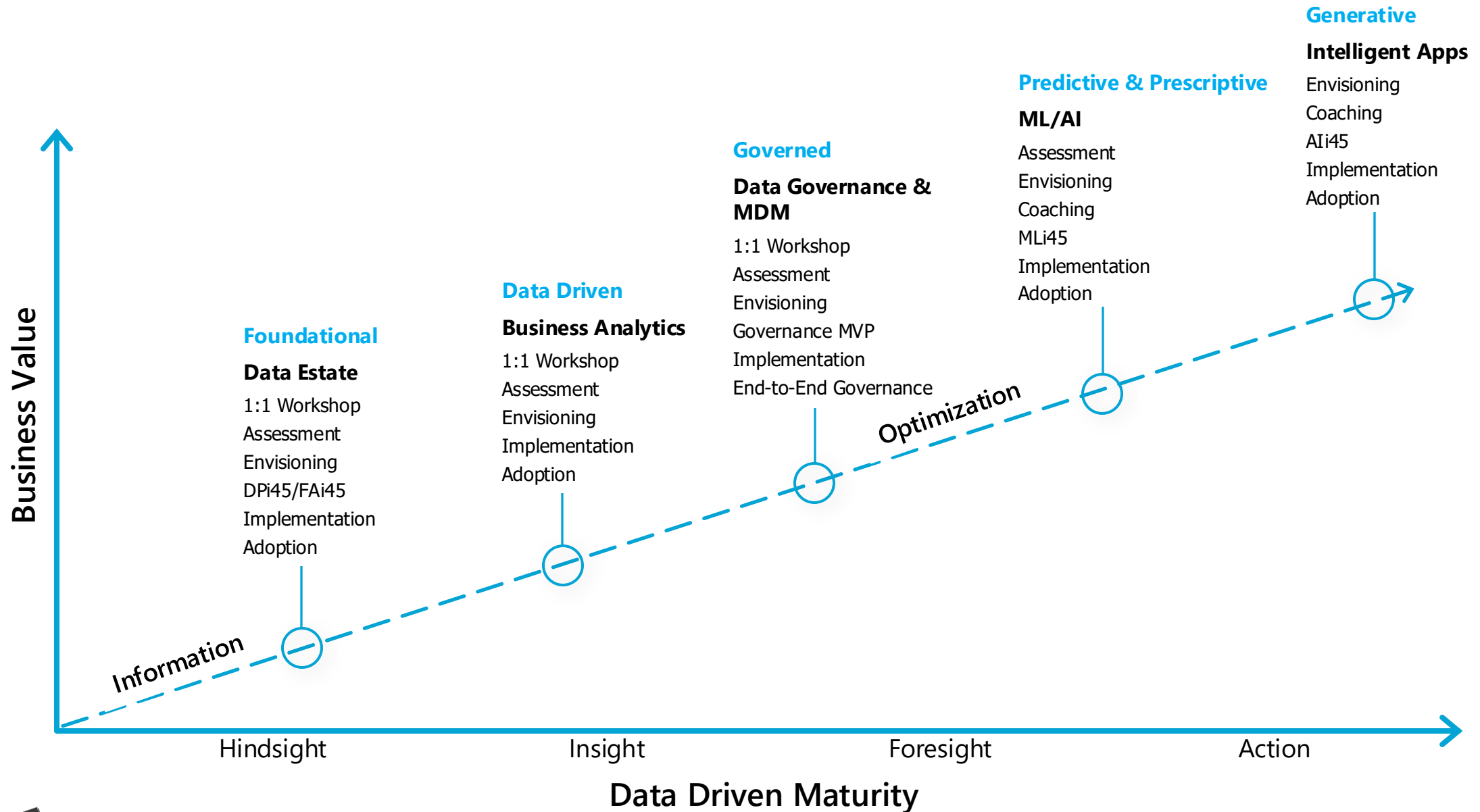
Fabric Lakehouse & AI Offerings Journey

Spyglass Fabric Lakehouse & AI Journey

Building a Transformative Platform & Center of Excellence



Data Maturity unlocks the door to AI, machine learning, and real-time insights



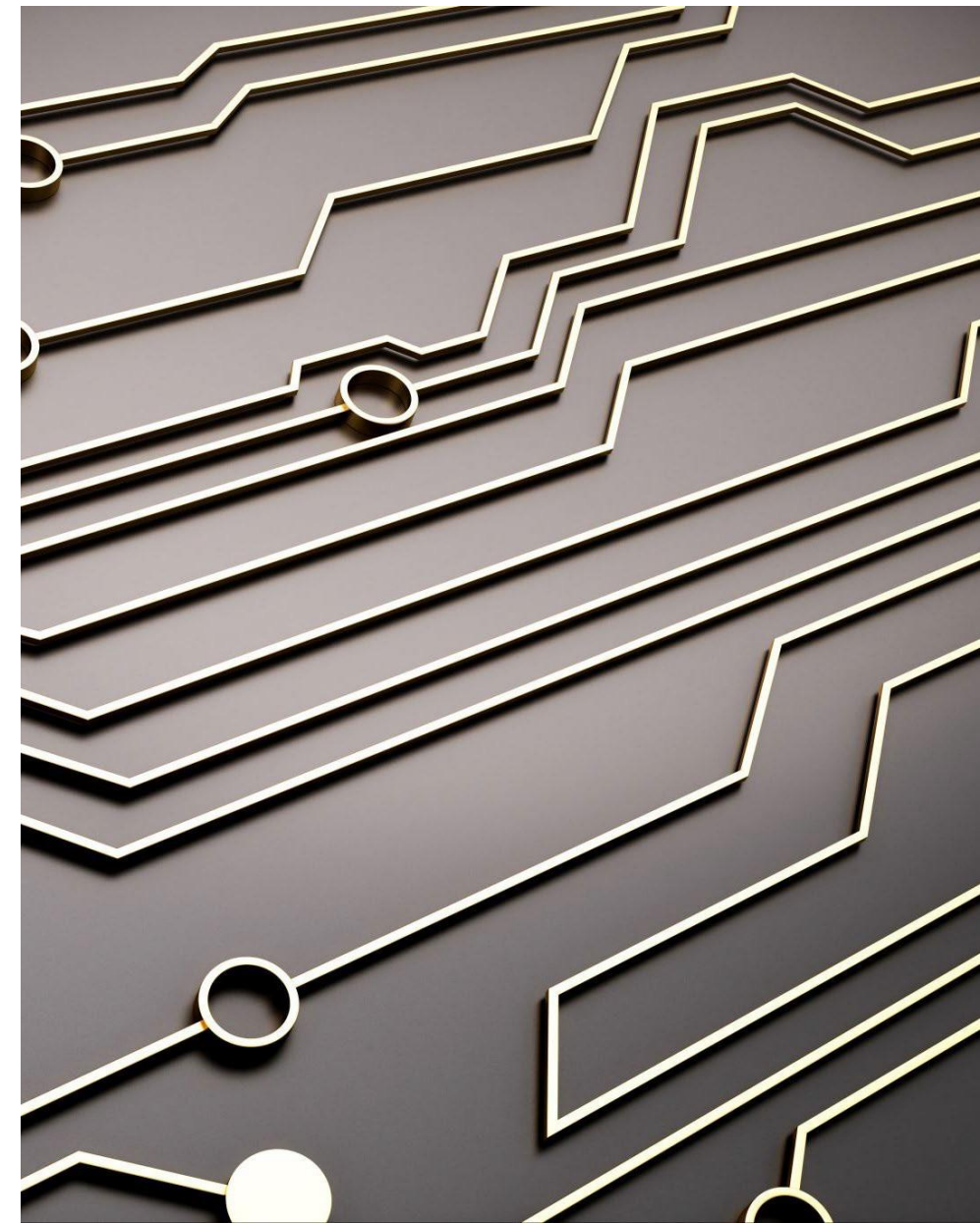
3-Week Fabric Envisioning

The Problem

Many clients either have a large Power BI footprint and are not aware of comfortable with its evolution to Fabric, are having trouble utilizing its vast capabilities, or have other data products and want to explore Fabric as a solution and its benefits.

Whatever the case, we often see clients needing assistance with challenges such as:

- Awareness of Fabric's advanced functionality
- The need to directly connect to databases and other data sources
- The need to integrate existing data investments and assets
- The need to install the on-premises data gateways and the supporting objects to directly connect to data source
- Need for a solution management, governance and sharing scenarios
- Need for defined security of lakehouses, warehouses, pipelines, dashboards, reports, datasets
- Need and understanding required to manage the evolution of Fabric in Office 365



Spyglass Fabric Envisioning (\$30k)

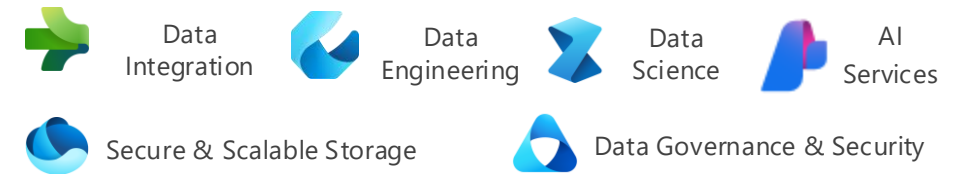
With the Spyglass-led Fabric envisioning offer, Spyglass will expertly guide your organization in unlocking the full potential of Fabric through a trusted and methodical approach. This service will enable you to envision a 'world of the possible' within your business data estate.

During our engagement, we will **comprehensively explore Fabric's capabilities** across all rollout dimensions, including **Strategy & Vision, Governance, Roles and Responsibilities, Delivery Models, Service Management, Security, Support, Adoption, and Culture.** Our customized **hands-on "Fabric-in-a-Day"** agenda places you at the helm, **empowering you to construct your inaugural Fabric Solution and project your future state with Fabric.**

Deliverables:

Spyglass will guide you through an Fabric envisioning exercise in just 3 weeks!

- Enable data connectivity to Fabric
- Hands-on "Fabric Solution in a Day" Workshop
- Education on concepts such as; Publishing and Sharing strategies, Data Mesh & Data Products and Self-Service Analytics
- Demonstrate Entra integration & security features, advanced features of Fabric & Power BI
- Spyglass MTG Fabric Architecture Diagram, Envisioning Report & Review



Key Benefits

Accelerate your Strategy and Implementation Roadmap:

- Leverages the deep experience and knowledge of advanced specialized partners like Spyglass
- Ensures faster and more efficient development of a comprehensive strategy and implementation plan
- Reduces risks associated with deployment by relying on proven methodologies and best practices

Hands-On Experience and Practical Education:

- Engages participants through a personalized "Fabric Solution in a Day" workshop
- Offers in-depth education on publishing and sharing strategies, data mesh, and self-service analytics
- Demonstrates advanced Fabric and Power BI features, including Entra integration and security

Timeline

Week 1:

- Envisioning Workshop, Use-Case Review, Data Model Input
- Includes IT, Security and Compliance, Business Users, Initiative Sponsor Team.

Week 2:

- Workspace config, Fabric Solution in a Day, and initial strategy review.
- Knowledge Sessions, Workload Review, Ad-Hoc Q&A.

Week 3:

- Fabric Envisioning Report, Review & Next Steps.



Contact Us:
info@spyglassmtg.com