



*A Women Owned/Women Led Company*

## LLMOps:12-Wk Implementation



# The Problem

When working with **large language models**, one of the key challenges is **ensuring the accuracy and stability** of the responses generated.

These models can produce **incorrect or biased information**. It is crucial to have effective operations in place to **monitor and evaluate** the outputs and reliability.

- Ensuring the accuracy and stability of GPT responses is difficult
- Gen AI Models can produce incorrect or biased information
- Accurately monitoring and evaluating outputs



Accuracy Assessments



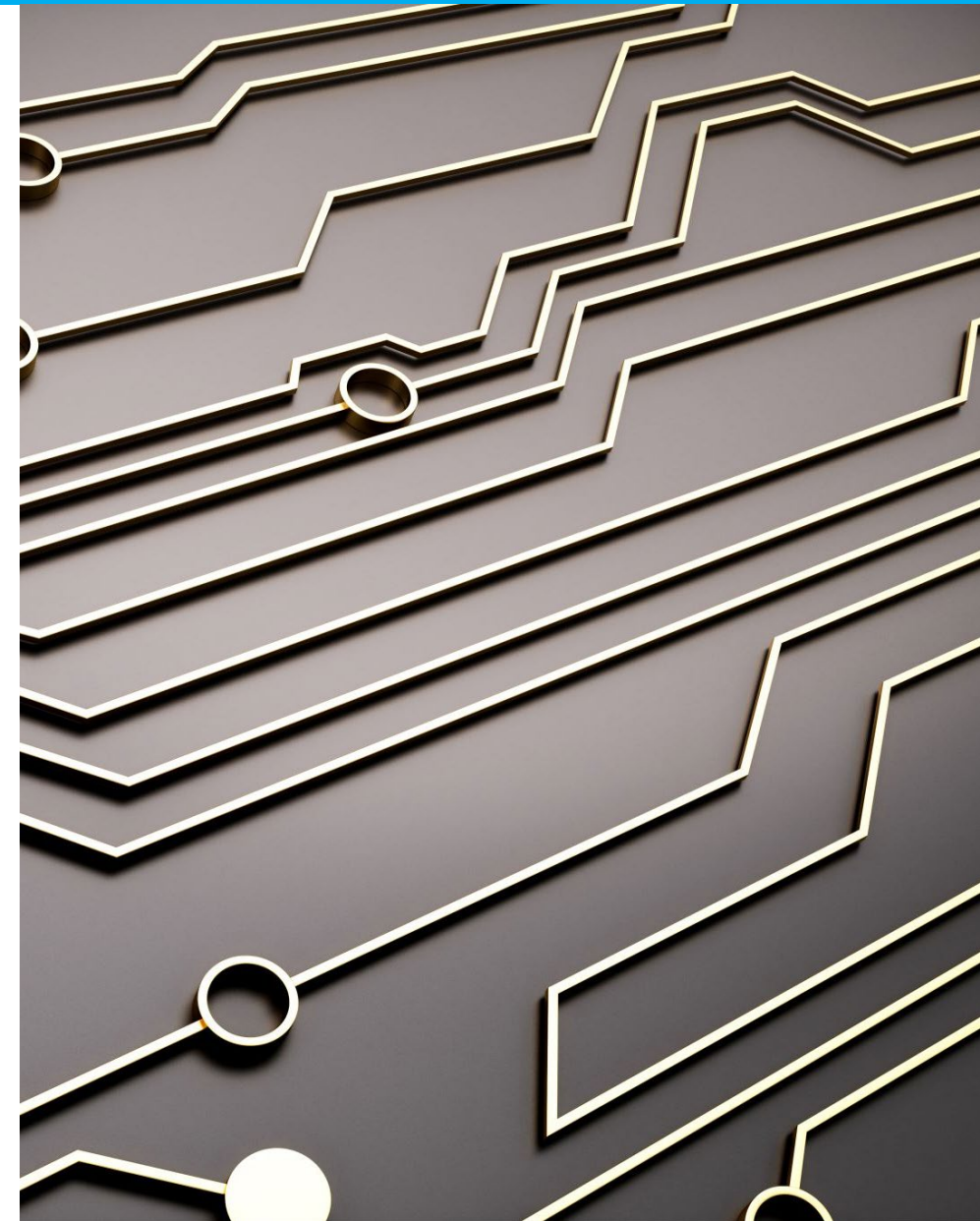
Stability Analysis



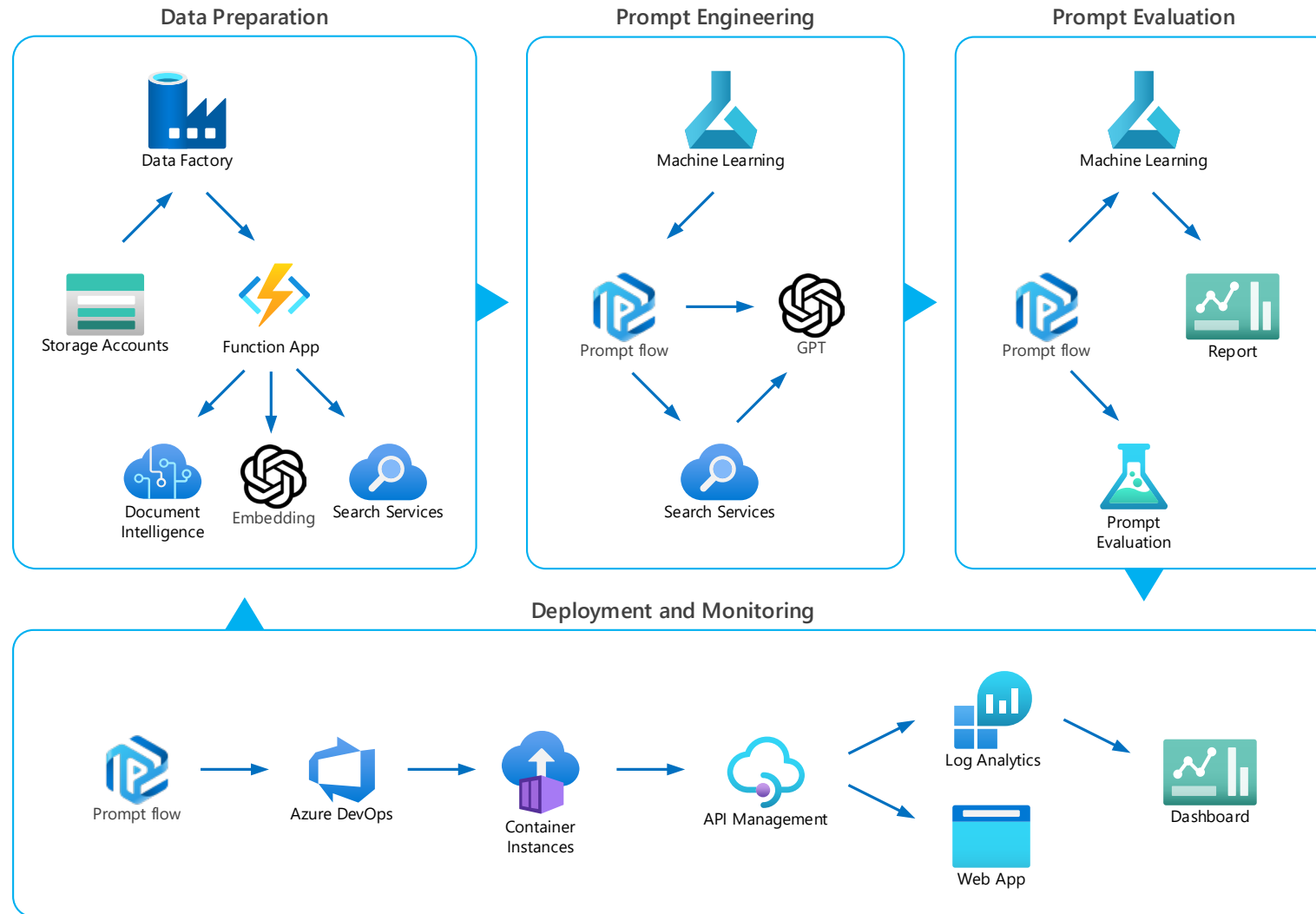
Performance Metrics



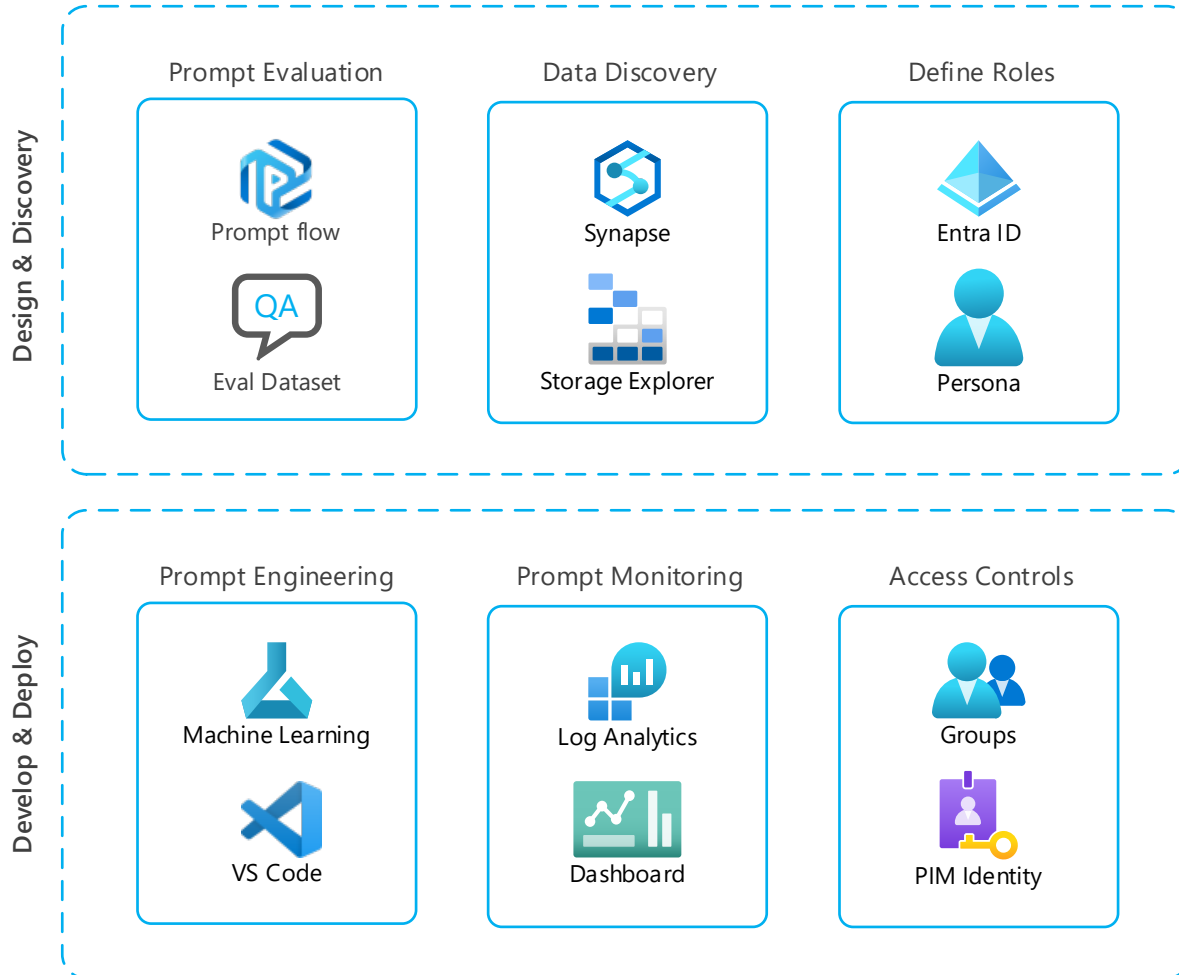
Custom Notifications



# Development to Production workflow for Intelligent Apps



# LLMOps Platform



**Monitoring:** Our solution offers monitoring capabilities, allowing organizations to track the responses generated by their language models.

**Accuracy Assessment:** Evaluate the accuracy of language model responses. These tools leverage natural language processing techniques to analyze the generated text and identify any inaccuracies or errors.

**Stability Analysis:** Understanding the stability of language model responses is crucial in maintaining reliable outputs. Identify inconsistencies or drift in the model's behavior.

**Alerts:** Notifications ensure that any deviations from desired accuracy or stability thresholds are promptly flagged, enabling timely interventions.

**Performance Metrics:** Gain insights into the quality and reliability to generated content. Track system performance over time and make informed decisions for ongoing improvements.



# Thank You

[info@spyglassmtg.com](mailto:info@spyglassmtg.com)