



STUDY FETCH

Institutional Plan

The AI Education Platform That Actually **Helps Students Learn**



StudyFetch is an engaging **AI learning experience** created from a **student's existing course materials**. That way students learn from the professor's material.



AI is around to stay. Make sure your students know how to use it **positively** and for their own **benefit**.



AI Designed for learning and helping students **understand concepts**, not cheating.



StudyFetch's AI technology **sources answers** and help from professor's own material ensuring its **accuracy** and **relevance** to that specific class.

Customizable, Adaptable Tutoring

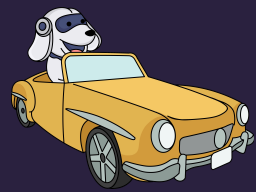
No restrictions on what material can be explained, simply drop in the content you want to learn about and StudyFetch can get started on helping you understand the topic!

Spark.E and StudyFetch never lose patience with a student, he's always there to help!



StudyFetch is **available 24/7, 365 days a year**, students **never** need to wait for answers to questions.

Institutional Adoption



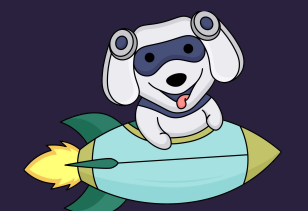
AI is being implemented into education at a **rapid pace**.

Imperative that schools and universities are able to find a solution that is **safe, accurate and consistent** with modern pedagogy.



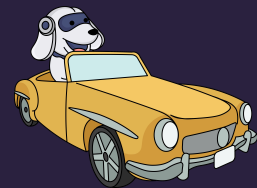
Faculty and administration are given **total control** over the platform allowing StudyFetch to be **featured in classrooms** in a case by case basis.

Multiple Pilots Underway for **2024-2025** school year.



Pilots at renowned universities such as **Auburn University** and **Emory University**.

Students Already **Love** StudyFetch!



Students at **10,000+ Universities** and **Schools** use StudyFetch consumer platform

1 Billion Organic Views + on All StudyFetch Social Media Platforms



Millions of Users signed up for StudyFetch's student platform

Users have **200+ day streaks** on StudyFetch platform



Accuracy in Education

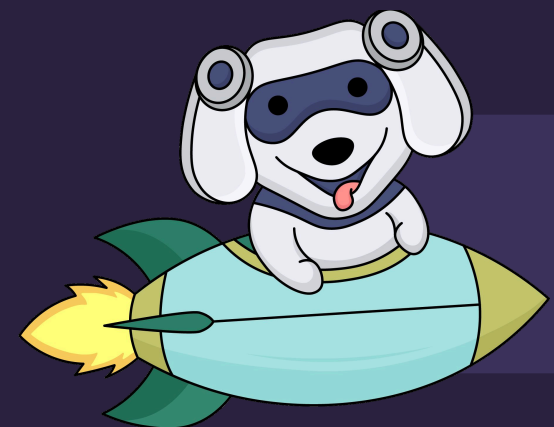
Safe



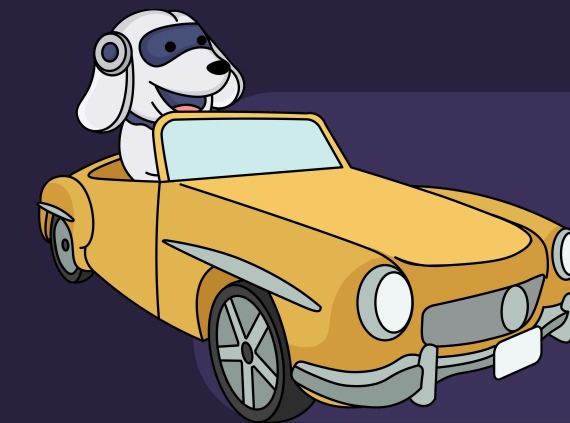
Reliable



Accurate



Extremely Low Hallucination Rates and Accuracy in 150,000+ word documents.



Built with **strict guardrails** in mind to ensure students are getting **accurate information** without being fed answers.



Faculty and Administration are given **total control** over the platform allowing StudyFetch to be **featured in classrooms** in a case by case basis.



Use **multiple LLMs, guardrails, and architectures** to get the most **accurate responses** possible. Get a custom solution tailored to your institutions needs.

Student Feature Set

See more in the appendix!



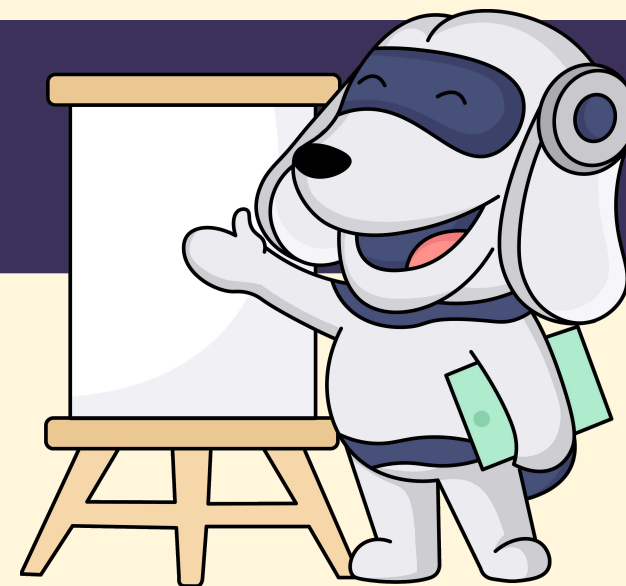
Notes

AI Designed for learning and helping students understand concepts, not cheating.



Live Lecture

Take notes for you while in a lecture in real time and ask questions, so your students can pay attention to the teacher.



Tutor AI

Spark.E is your fun and helpful AI tutor you can always ask for help. He designs lessons and helps you complete milestones.



Quizzes & Flashcards

Create infinitely practice tests, quizzes, flashcards, and games off class materials.

Advanced IT & Security Strategies (Part 1)

Non Intrusive Login Setup

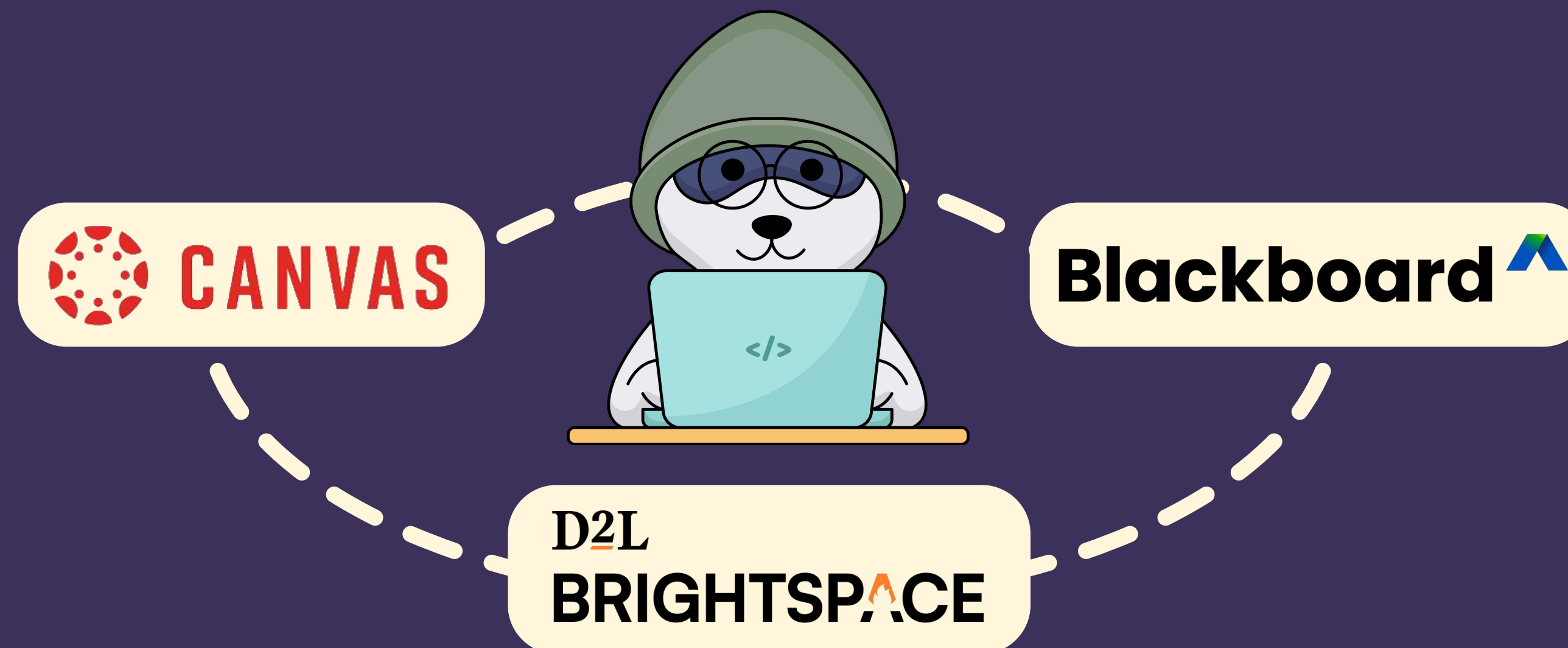
Robust enterprise level security, privacy, and data handling.

Data Security

Schools and Universities on Enterprise plan get own cloud and server instance for all data, and single tenant instances.

Integrate with LMS

Integrated into Canvas by Instructure, Blackboard by Anthology, and Brightspace by D2L. Other LMS providers can be accommodated.



Advanced IT & Security Strategies (Part 2)

Customer Support

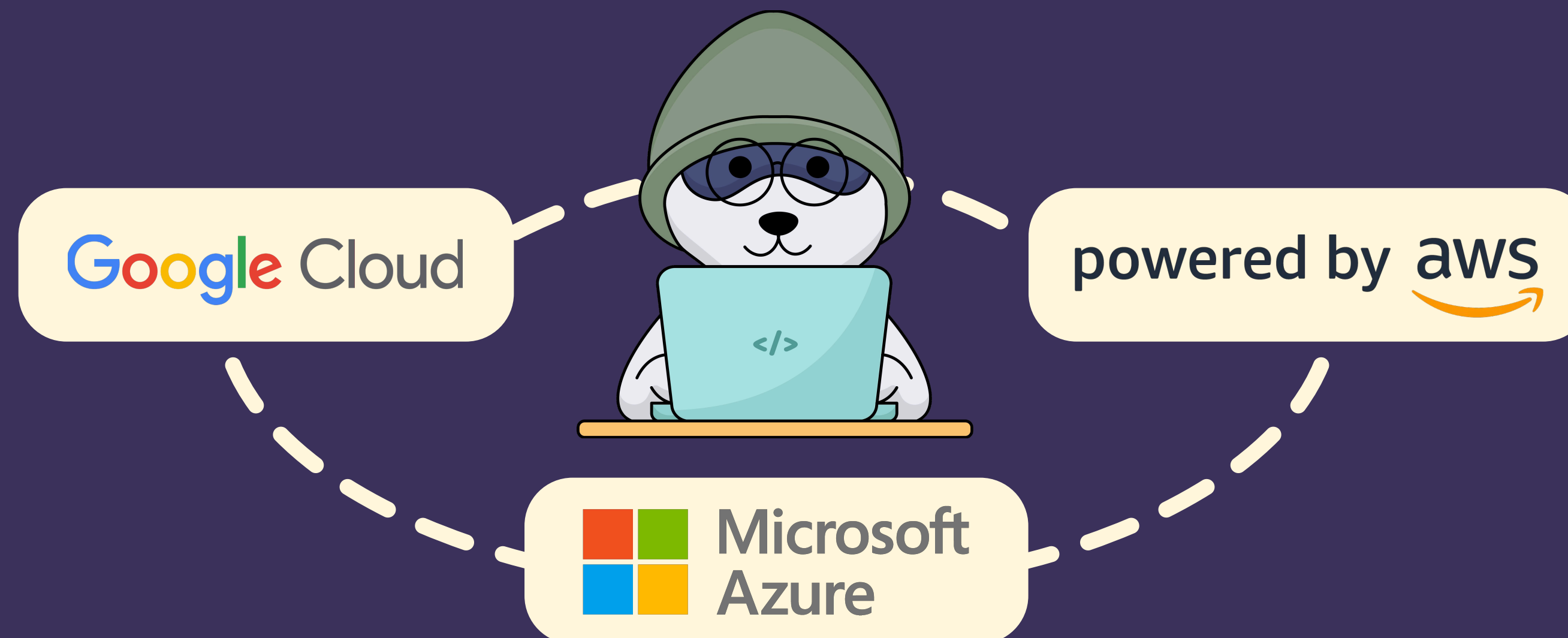
Dedicated Customer Support Representative 24/7 available for all your needs.

Enterprise Platform

StudyFetch's Enterprise plan includes school specific branding and customization to distinguish your version of StudyFetch from the normal consumer version.

Analytics

Analytics integrated into the platform in a safe and secure manner to best tailor future instruction to student's need.



Contact Us

Please feel free to reach out
enterprise@studyfetch.com or your dedicated sales
member with any questions.





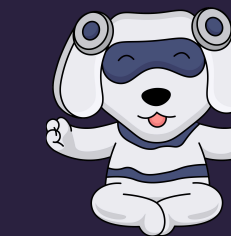
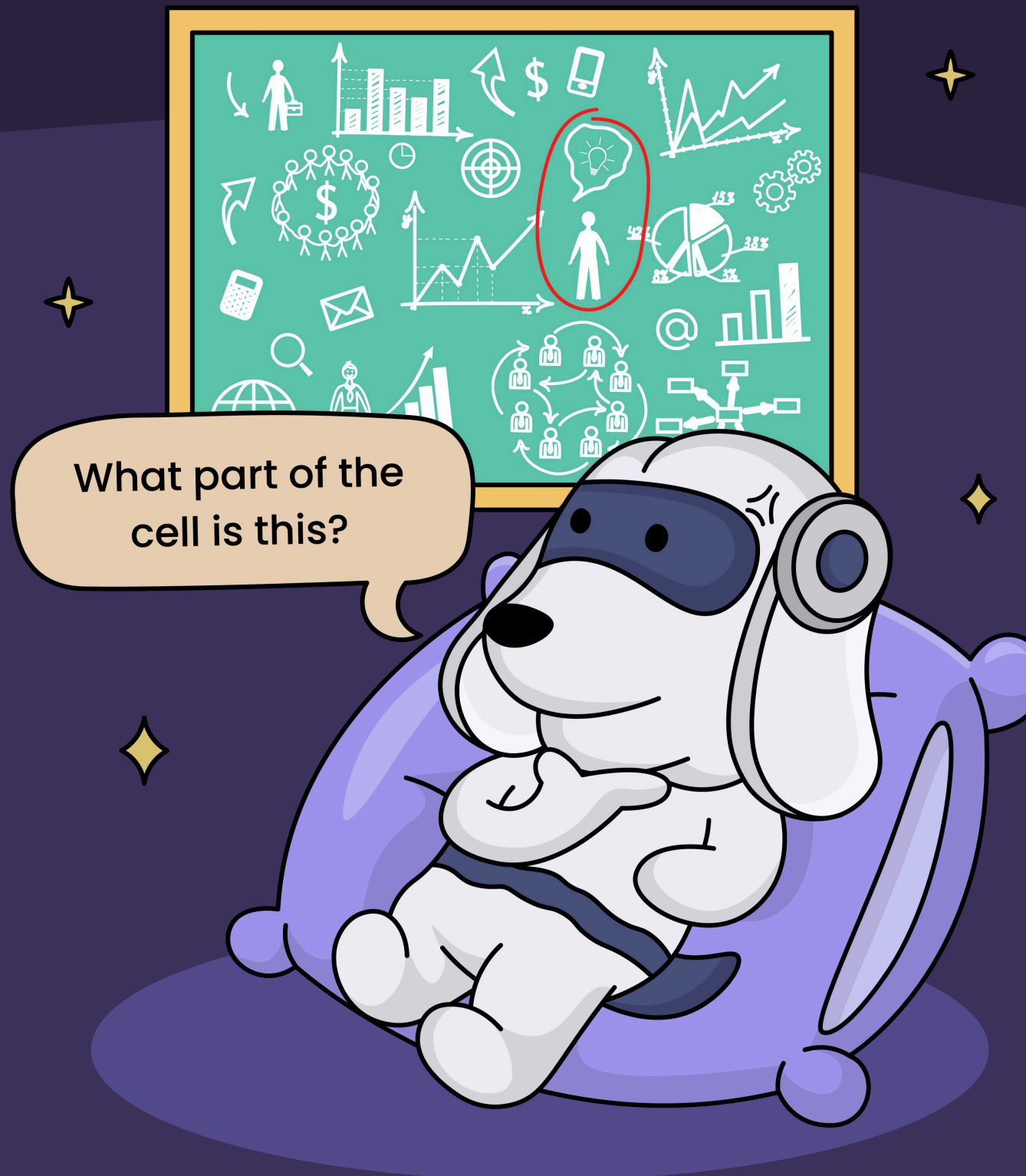
STUDY FETCH

Feature List / Appendix

Spark.E Visuals



Spark.E Visuals allows students to **circle any image** or diagram on a document and **ask clarifying questions**.



Allows students to **pinpoint in on exactly** what they are asking about.



Extremely **intuitive** and **easy to use** for students.



Link to demo:
<https://studyfet.ch/FBHCwSu>

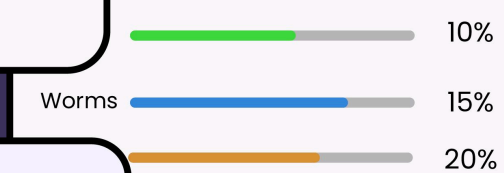
StudySets



Studysets are how students **organize** all their class materials as well as **AI generated study aids**.

S	M	T	W	T	F	S
	1	2	3	4	5	6
7	8	9	10	11	12	13
14	15	16	17	18	19	20
21	22	23	24	25	26	27
28	29	30	31			

Progress of your studyset



Your Study Set Home

Untitled Study Set

No Description



Can be for organized as a **single day** of class or for a **whole unit** a class.



Further Organized into folders to store study sets for **entire units** of a class.

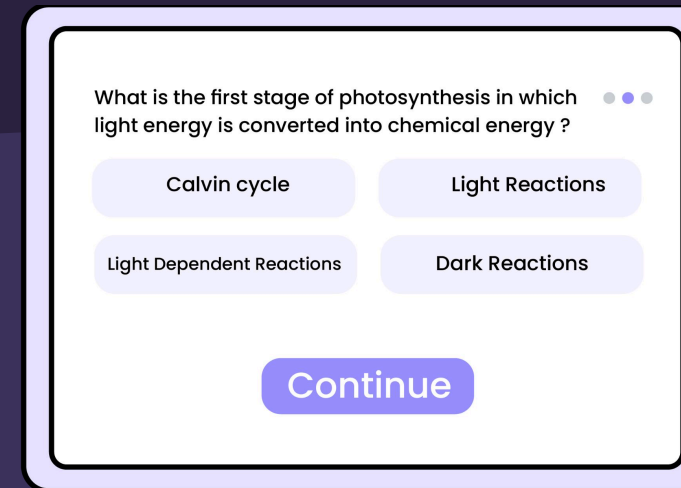


Link to demo:
<https://studyfet.ch/PpCwMuu>

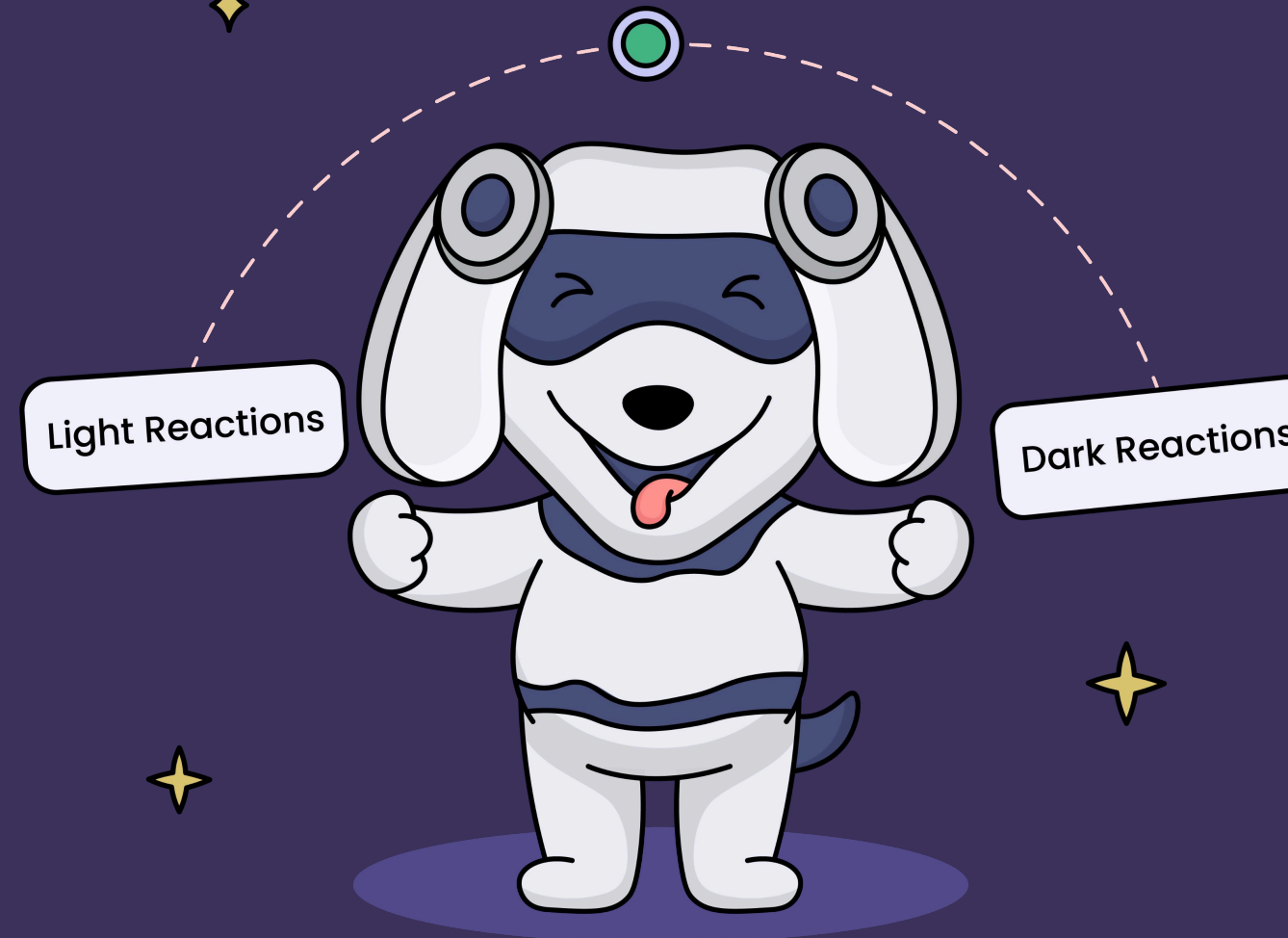
Quizzes and Tests



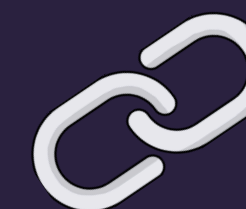
QuizFetch allows students to **create infinite practice questions** from whatever class material they **upload** to the platform.



QuizFetch **integrates spaced repetition** into the tool allowing students to **focus in** on the concepts and questions they are **struggling with**.



Perfectly compliments StudyFetch's practice test tool as a **precursor** by giving access to the SPARKE AI chatbot.



Link to demo:
<https://studyfet.ch/LI5CRix>

TutorMe



TutorMe allows the student to get a **full zoom like lecture** of **any uploaded material** by our AI Assistant Spark.E.



TutorMe comes built in with a **custom lesson plan** along with **milestones** along with **analytics** to see where the students needs help with a concept.



TutorMe has the option for the student to do the lesson with Spark.E **speaking** to the student using **text** through the Spark.E chatbot interface.



Link to demo:
<https://studyfet.ch/EuZOSXG>

Chat



More **accurate** than ChatGPT and other chatbots due to students **using academic material** from their actual class.



Gives students option to chat with **wider internet** if they have **no material** to upload to platform.



StudyFetch offers a **global chat** function that allows students to chat with **one or more documents** at a time.

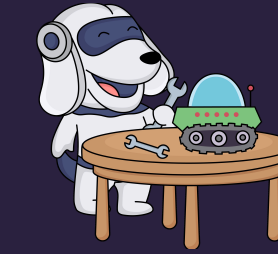


Link to demo:
<https://studyfet.ch/puE8KMM>

Essay Grader



Simply **upload your essay** or **piece of writing**, select one of our rubrics or ideally upload the assignments rubric, select your grade level and then proceed to get **concise** and **useful feedback** regarding the errors on your essay.



Our Essay Grader **does not** rewrite the essay for the student, it simply points out **errors present** and **encourages** the student themself to rewrite it without the error.



StudyFetch offers a **built in essay** and **writing grader** for students to take **advantage of**.

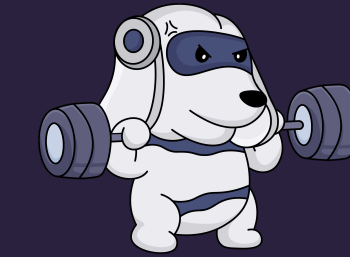


Link to demo:
<https://studyfet.ch/WKzBqfQ>

Audio Recap



Drawing from our SPARKE personalities, our Audio Recap can be **in the style of any one** of custom SPARKEs.



When **viewing** your class material in our document editor, click the Audio Recap button located on the **editor toolbar** and get an Audio Recap of your document!

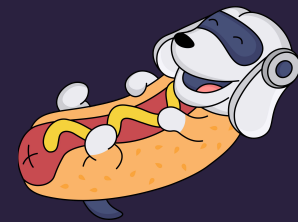


StudyFetch offers a **1-2 minute** Audio Recap or podcast of **class material** that you upload.



Link to demo:
<https://studyfet.ch/dl8NbuG>

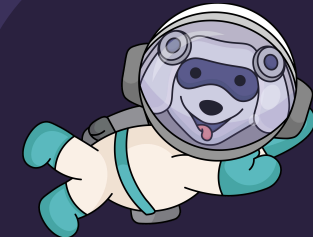
Notes



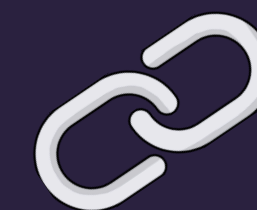
StudyFetch offers a full document editor to **rewrite, edit, or paraphrase** AI generated notes **drawn** from documents.



Notes Editor **integrated** with AI editor so that notes can be **shortened** or **elongated** with a simple AI plugin.



Easy to use interface that mirrors **commonly used softwares** such as Google Docs or Microsoft Word.

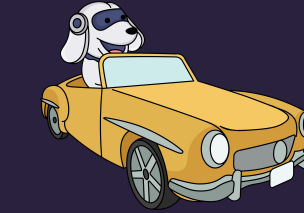


Link to demo:
<https://studyfet.ch/oqfddp9>

Live Lecture



Live Lecture **imports into** our Notes editor so after you have your Live Lecture Notes you can **edit** them to your **preferred style and standard.**



Live Lecture allows students or professors to take **summarized** or **detailed** notes in class by just clicking **one button.**



Allows students to **focus** on what professor is lecturing about and allows professor to **focus on teaching.**

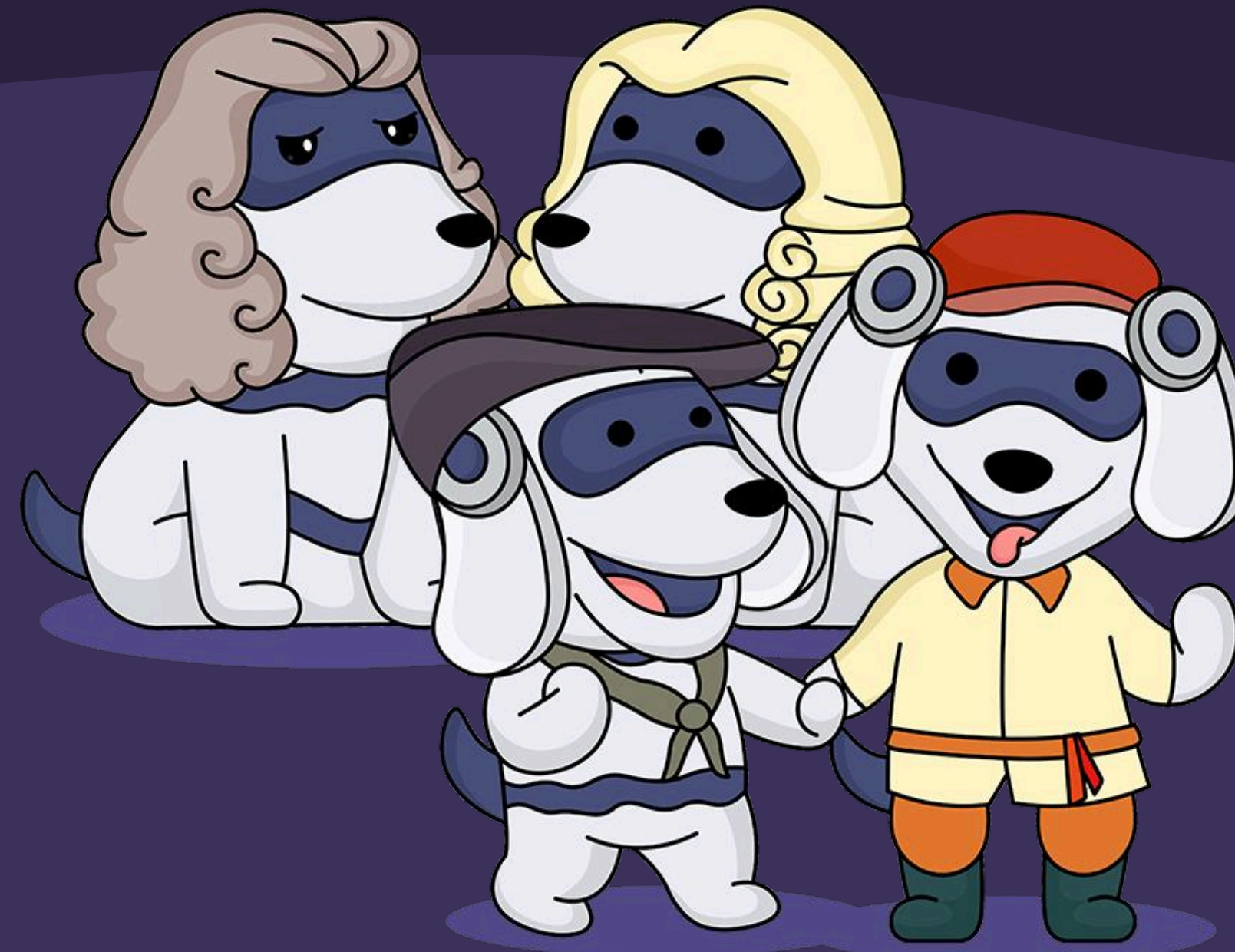


Link to demo:
<https://studyfet.ch/rMfLIOA>

Custom SPARKEs



Customize the personality of your AI tutor Spark.E, imagine learning from your **idol** or **favorite superhero**, that's possible with StudyFetch.



Our SPARKEs are present throughout the entire platform through our AI chatbot.



Link to demo:
<https://studyfet.ch/Rrj0DPW>

Flashcards



StudyFetch offers **AI generated** flashcards that can be created from **any document** that you upload to the platform.



Our flashcards come default with **spaced repetition** and the ability to **review stats**.



Our AI generated flashcards come default with ability to **edit definitions, shuffle flashcards and more**.



Link to demo:
<https://studyfet.ch/QJhW7PG>