



SULAVA
CREATING BETTER WORKLIFE

Microsoft Mesh as a Service

What is Microsoft Mesh

- Microsoft Mesh is a new platform that allows organizations to create their own immersive virtual experiences
- Immersive 3D environments available inside your organisation through PC/Mac and Meta Quest/VR devices
- Mesh enables a new kind of content production, presentation, interaction and shared experience of working together

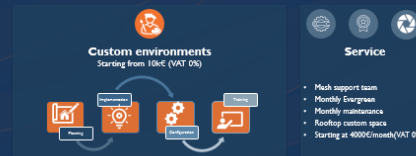


Imagine that you can connect with others in a natural way, with a sense of co-presence, no matter where you are. Businesses can create custom experiences and build their own worlds with content and uses tailored to their needs.

Microsoft Mesh is part of Microsoft's vision of the metaverse, a term that refers to the convergence of physical, digital, and virtual worlds. With Mesh, employees can learn, train, explore, meet and interact more intuitively than in Teams meetings, providing a sense of togetherness and shared experiences, bringing back presence into hybrid work.

Explore the possibilities of immersive spaces open and how Mesh is transforming the future.

Sulava Mesh as a Service



What is Microsoft Mesh

- Microsoft Mesh is a new platform that allows organizations to create their own immersive virtual experiences
- Immersive 3D environments available inside your organization through PC/Mac and Meta Quest VR devices
- Mesh enables a new kind of content production, presentation, interaction and shared experience of working together



Mesh with Sulava

- Microsoft Mesh is now available to everyone in Public Preview. General Availability in Q1 2024.
- Sulava has been using Mesh in Private Preview since spring 2023 and works closely with the Product Group at Microsoft.
- Sulava will support you in making the leap to the metaverse with Mesh.



Imagine that you can connect with others in a natural way, with a sense of co-presence, no matter where you are. Businesses can create custom experiences and build their own worlds with content and uses tailored to their needs.

Microsoft Mesh is part of Microsoft's vision of the metaverse, a term that refers to the convergence of physical, digital, and virtual worlds. With Mesh, employees can learn, train, explore, meet and interact more intuitively than in Teams meetings, providing a sense of togetherness and shared experiences, bringing back presence into hybrid work.

Explore the possibilities of immersive spaces open and how Mesh is transforming the future.

Why Mesh?



Bring back presence into hybrid work

In Mesh worlds, your employees can meet and interact more intuitively than in Teams meetings. They have shared experiences and sense of together.



Endless opportunities for expansion

The Mesh platform can be expanded almost indefinitely, and it also includes versatile physics, spatial audio and integrations to Microsoft 365 and beyond.



Built from the ground up with security in mind

Mesh is built for business use. Your Mesh environments and data are yours and reside in your Microsoft 365 environment.

Use case & Mesh Experience examples



Onboarding, learning and training

- AI Guided virtual onboarding and orientation
- Interactive training modules, tests and exams
- *Realistic simulations (fire drills, emergency situations, ..)*
- Escape rooms and other gamified learning experiences where people work together
- Virtual and hybrid classrooms



Showrooms and metaverse

- Product and site showrooms
- Exploring the future office, hotel, factory, or building
- Industrial metaverse: Digital Twins, IoT connected spaces, Realistic simulations
- Control rooms with integrated real time, real-world, information

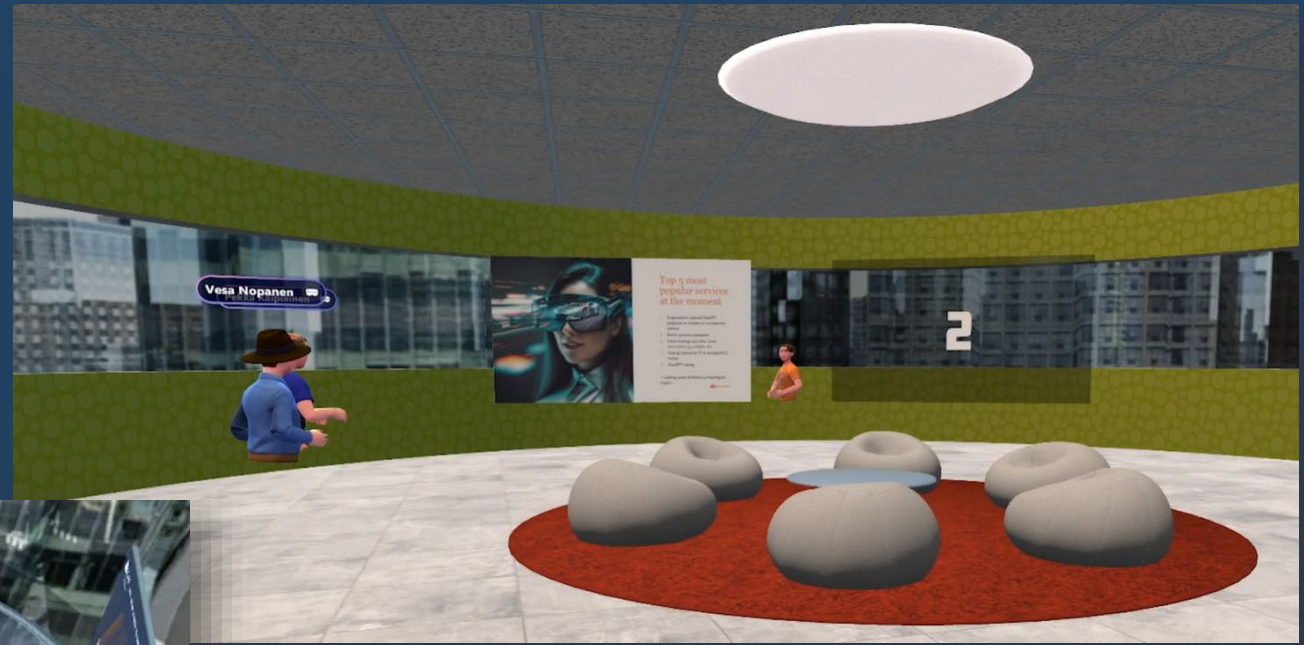


Events and innovation spaces

- A *Company hub* for company events, team building, meetings or virtual coffees
- Imaginative or replicate a real space in the company
- Company brand highlighted
- Workshops
- Innovation spaces
- R&D

Example: Rooftop

- Area for company events and team-building
- Breakout rooms for brainstorming
- Games for activities



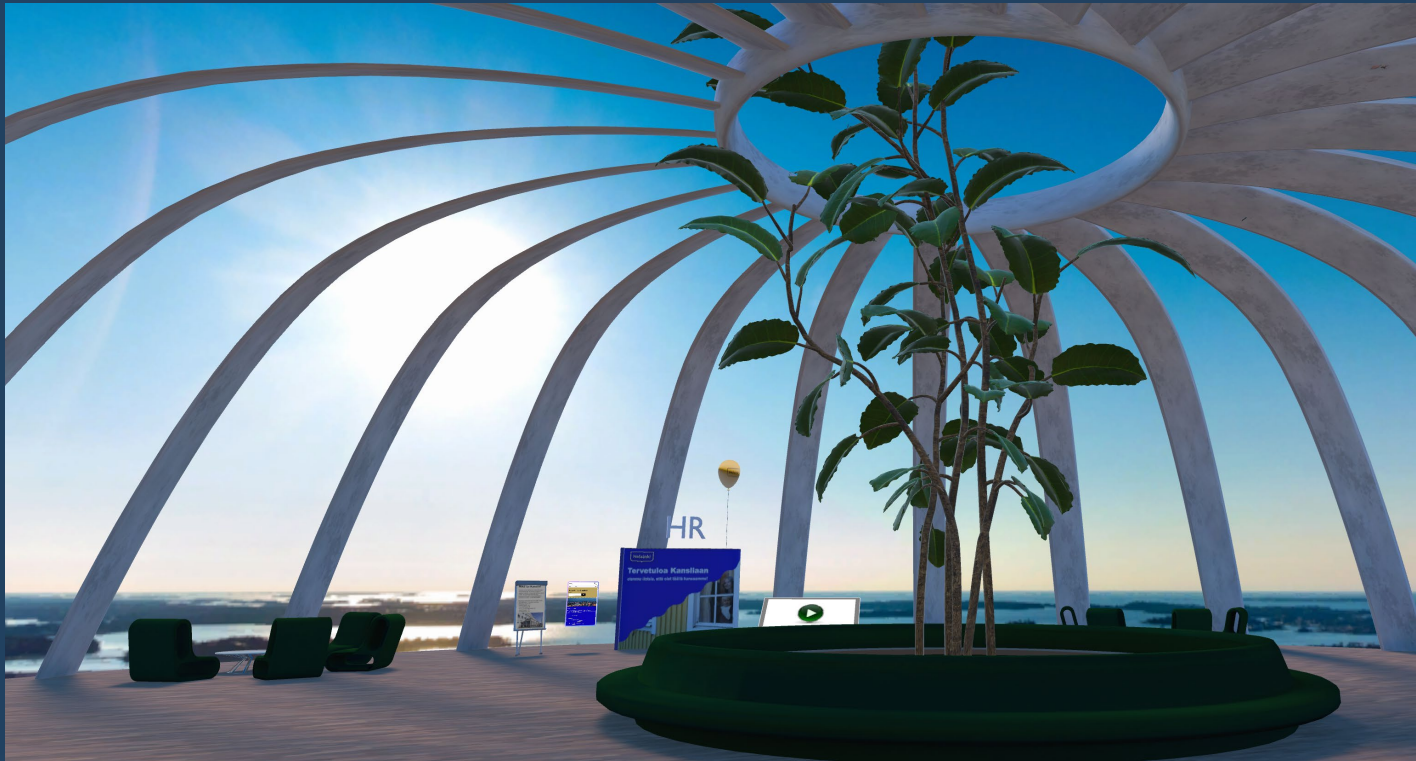
Example: Onboarding and training

- Training rooms (tour)
- Test rooms
- Lobby and teacher's view



Onboarding Experience

- Booths with information and rollups
- Avatars, 3D content, videos and web content
- Supports larger attendee numbers

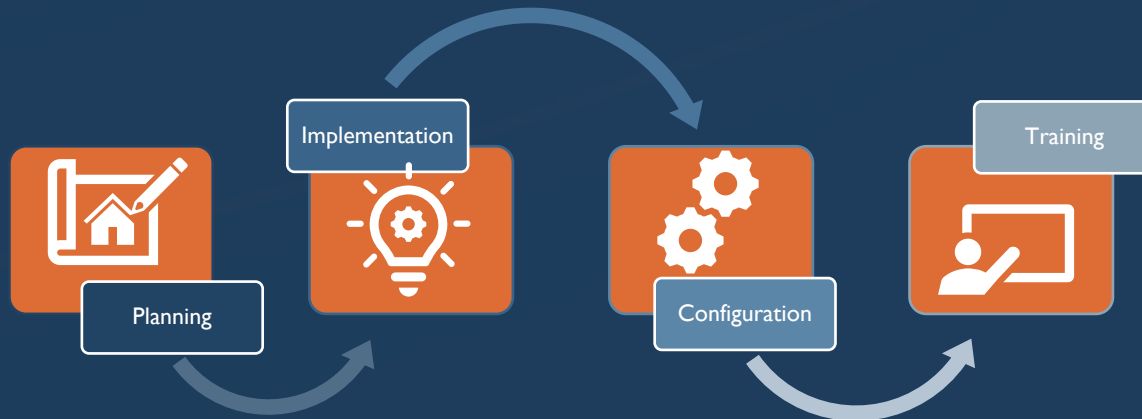


Sulava Mesh as a Service



Custom environments

Starting from 10k€ (VAT 0%)



Service

- Mesh support team
- Monthly Evergreen
- Monthly maintenance
- Rooftop custom space
- Starting at 4000€/month(VAT 0%)

Phase 1: Planning



What

- Use Case discovery
- Visual design of 3D environment
 - Style and appearance
 - Animations
- Mapping out
 - Interactivity and triggers
 - Integrations
 - Additional features

How

- 3h Kickoff-meeting
 - Use Case discovery
 - Environment goals
- 2h planning workshop
 - Visual design
 - Interactivity and triggers
 - Integrations
 - Additional features

Phase 2: Implementation



What

- Iterative implementation and development of the world together with the customer
- Implementation and enabling of integrations and interactions
- Technical configuration of Microsoft 365 platform

How

- Sulava's Mesh team designs, implements and tests the environment and features
- Weekly status and planning meetings with customer
- World deployed periodically into client environment for testing

Phase 3: Deployment and training



What

- Deploying and configuring the Mesh environment
- Introducing the environment and capabilities
- How and when organization can utilize the environment
- Guidance and instructions for use

How

- 2h introduction and instruction meeting + written instructions in Finnish/English
- 1h project closing meeting and preparing for further development and support

Ability to extend

- More interactivity, functionality, integrations and areas
- Additional environments for different use cases, updates to old environments
- Creating and building integrations



Thank you!

