

Windows 365

Solution Description for PoC

January 2022



Windows 365 – New solution for today's hybrid workforce



Your content
wherever you go



Consistent settings
across devices



Scalable storage
based on your needs



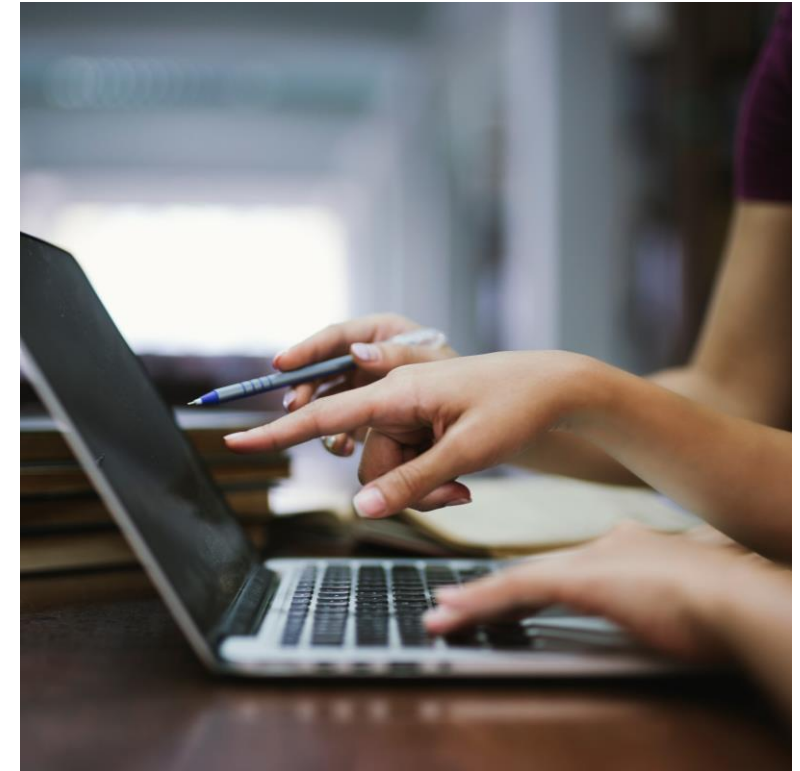
Compute options for
different users



The **apps** you need, when
you need them

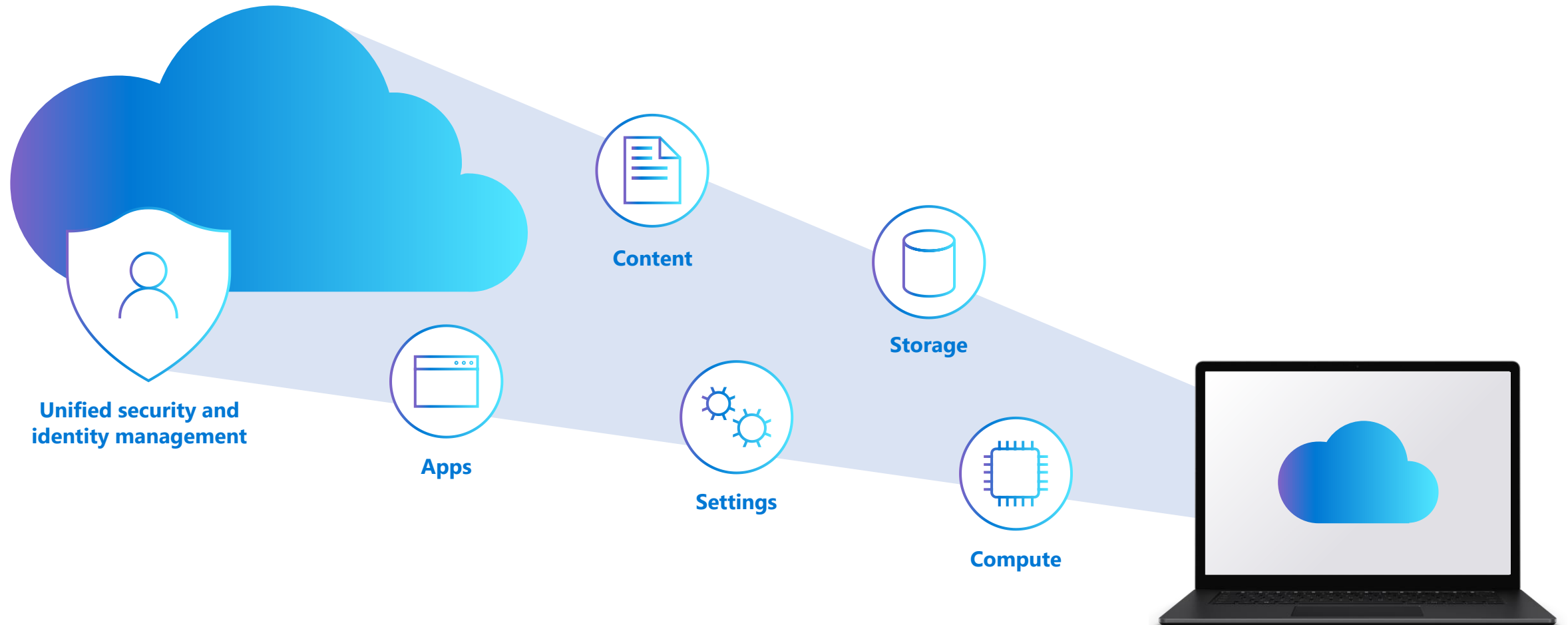


Integrated **unified security**
and **identity management**

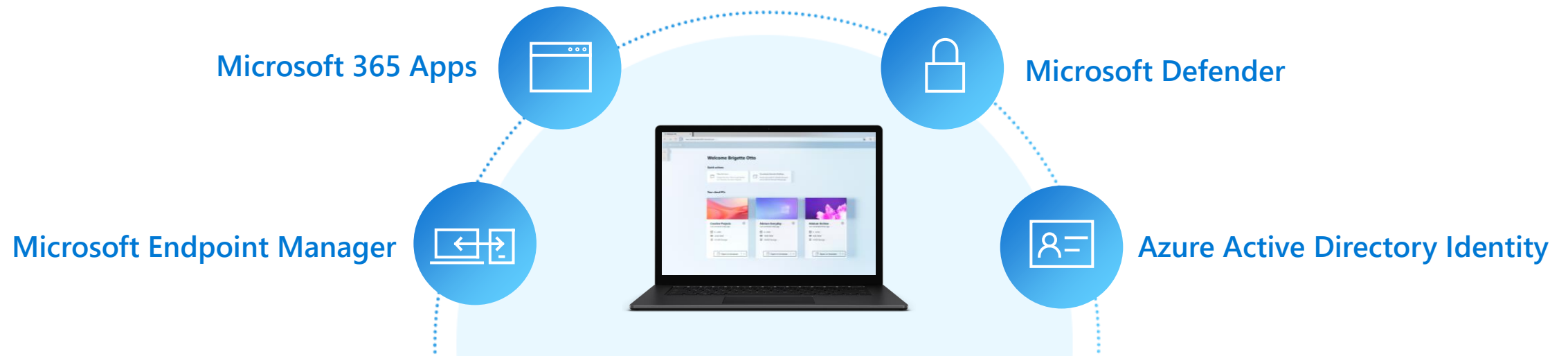
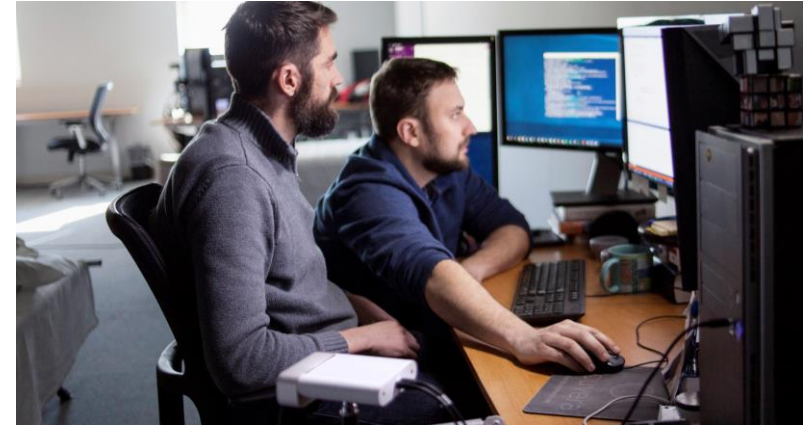


Windows 365 – Your Cloud PC

A new solution for today's hybrid workforce



Windows 365 - Integrated with Microsoft cloud services



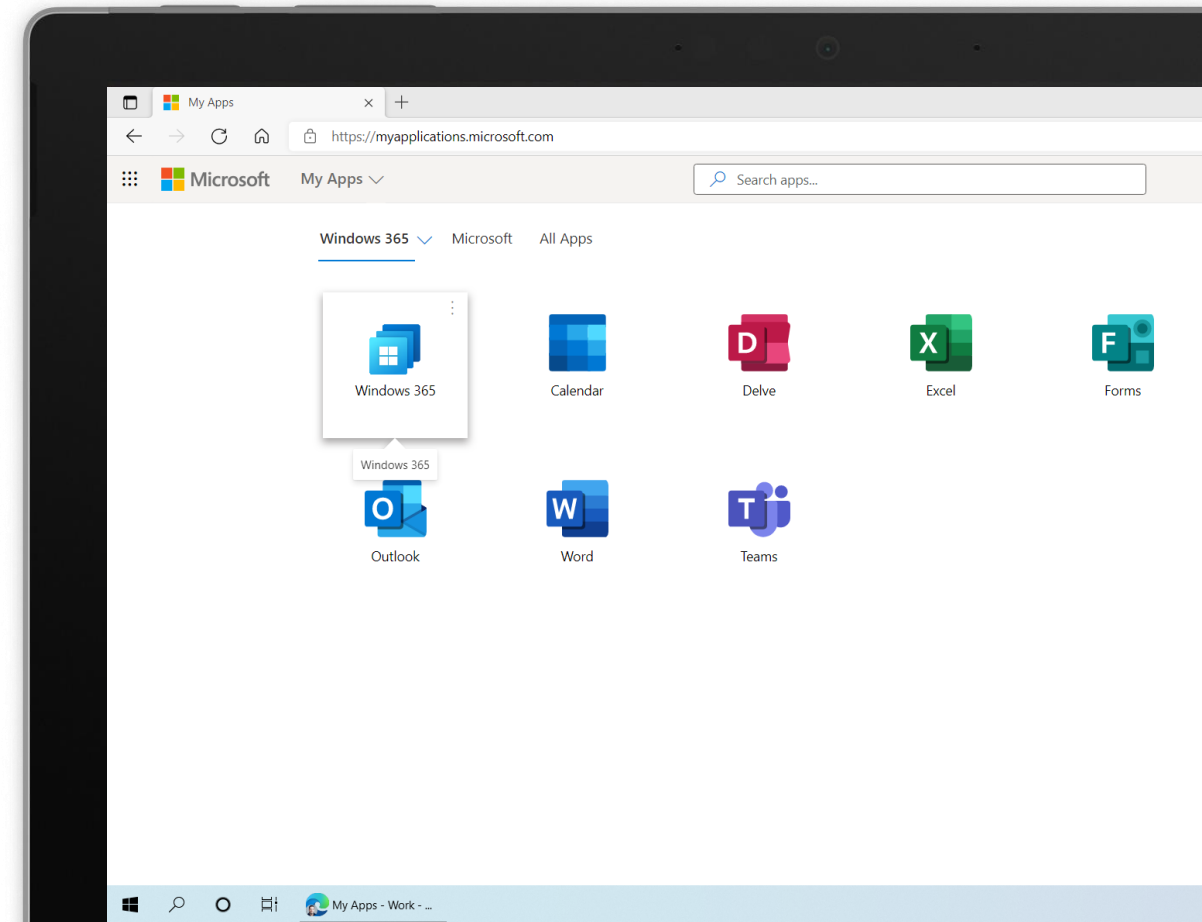
Windows 365 PoC Engagement

Sulava is proposing the PoC engagement, that includes activities such as:

- Understand the customer's current environment
- Explore customer's identity and endpoint management capabilities and design the recommended architecture
- Setup of an endpoint management plane based on Microsoft Endpoint Manager:
 - setup device configuration, security baseline, device compliance and conditional access, present results, discuss next steps and knowledge transfer
- The overall scope of the project includes the planning, Windows 365 setup and configuration, Microsoft Endpoint Manager setup and configuration, and provisioning of between 250 to 2,500 users with a Cloud PC

PoC Phase: Alignment and Scoping Discussion

- Supplier will conduct an alignment discussion to ensure collaboration between supplier (technical and project leads) and the customer (technical and project leads)
- The customer will acknowledge this alignment discussion as part of the milestone completion
- The alignment should include understanding the customer's current on-premises and cloud environment, introducing Windows 365, and discussing the project objectives, scope and schedule. The customer will acknowledge this scoping assessment as part of the milestone completion



PoC Phase: Environment Setup

Establish a Windows 365 endpoint management platform – an environment able to support access to a Cloud PC. Setup (for new MEM environment) or review (for existing MEM environment) of the following components:

- Windows 365 licenses/M365 and Azure subscriptions
- Azure Active Directory (Synchronization and Hybrid Azure AD Join (HAADJ))
- Active Directory Domain Services (OU, Group Policy)
- Microsoft Endpoint Manager (Configuration Policies)
- Identity (HAADJ Prerequisites)
- Networking configuration (Azure & Deschutes on - premises network connection (OPNC))
- Provisioning policy setup
- Adding custom device images (optional)
- Device configuration profile deployment
- Security baseline deployment
- Compliance policy deployment
- Conditional access policy deployment
- Apps deployment
- Onboarding to Endpoint Analytics (resource & performance monitoring – optional)

PoC Phase: Deployment (up to 50 users)

Deployment activities:

- 50 Users provisioned with a Cloud PC and document solution design.
- Validate implementation that devices provision, device configuration applies, and applications are installed.
- Deploy Microsoft Remote Desktop client to end users (if applicable)
- Deploy to end users (Handover, Training, Feedback)
- Cutover & go live support
- Status reports on planned and completed migration activity shared between the customer and supplier at milestone end or as mutually agreed.



Contact us to know more about Windows 365

Sulava Gulf

Dubai Internet City, Building 9

gulf@sulava.com

