



SureImpact At-a-Glance

SureImpact offers person-centered case management, impact management, dashboards, and analytics, enabling staff to track and measure activities and outcomes for their clients, while providing leadership with powerful insights into program and organization performance and social impact.

Advantages

- ✓ Connect participants to the resources they need when they need them
- ✓ Reduce the time required for client intake
- ✓ Serve more clients because of increased efficiencies
- ✓ Create personalized service plans centered around individual client goals
- ✓ Create a central repository for clients and programs
- ✓ Gain a 360 view of all client interactions and their outcomes over time
- ✓ Deliver multiple programs with ease
- ✓ Save hours on funder reporting
- ✓ Identify gaps in services to proactively address barriers and drive equitable outcomes
- ✓ Measure the impact of your organization and the services you deliver

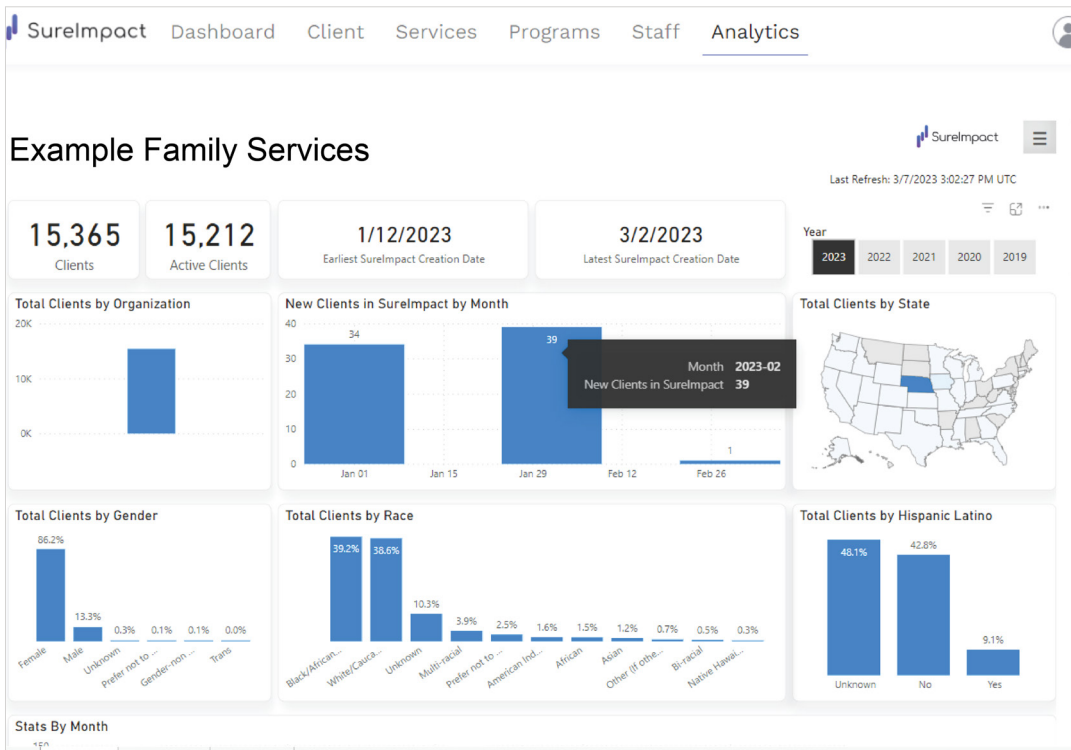
SureImpact for Nonprofits

Many of the social challenges nonprofits work to overcome are longstanding, complex, or even systemic. Although you are striving to make a positive impact in your community, it may seem that there are not enough hours in a week or funding available to tackle problems at the root and deliver equitable, person-centered services for those who need it most. And then there is the challenge of measuring the impact of your programs and services to show funders that their investments are truly creating lasting social change.

The good news is that there is now a software solution that takes case management to the next level and gives you the actionable insights you need to prove you are making a measurable difference. Designed for social-change makers by social-change makers, SureImpact meets all of your person-centered case management, program tracking, and compliance needs. All while increasing your team's data capacity and expanding your impact in the community. In addition, SureImpact's outcome tracking tools and out-of-the-box Analytics give you visibility into client, program, and organization outcomes and impact in real time. It's everything you need in one powerful solution.

Senior Programs Manager at Tempe Community Action Agency (TCAA), Megan Wilson, MSW said "TCAA is required to track every activity related to SNAP, including direct services, education, and community engagement. Before switching to SureImpact, I had to compile information from 24-26 separate spreadsheets to determine individual staff counts, monthly counts, and quarterly counts.

With SureImpact, I now have all the SNAP activity data in one location that I can quickly access and pull reports from whenever I need to. SureImpact has saved me many hours on reporting each month that I can now use to improve our programs and better serve those who need it most."



SureImpact is more than a software company; we're your partner in driving long-term social change. SureImpact enables you to:

Track Data Unique to Your Organization

SureImpact enables you to define and report on the specific outcomes you want to achieve for your beneficiaries, your individual programs, and the community.

Manage Multiple Programs with Ease

SureImpact is specifically designed to help you manage multiple programs with different reporting requirements.

Track and Share Impact Over Time

SureImpact enables you to measure outcomes and impact over time on an individual, program, and organizational level.

Increase the Quality of Data Collection

SureImpact automates the data collection process to improve accuracy and reduce time spent on data entry.

Turn Data into Insight

SureImpact enables leadership to understand the impact of programs and interventions, identify potential areas of improvement, and make changes as needed.

Rest Easy Knowing Your Data is Secure

SureImpact provides enterprise-level security at a price you can afford. SureImpact meets multiple U.S. and international standards for data storage, access, and transmission, including HIPAA, ISO27001, 42-CFR Part 2, and GDPR.

Improve Performance

SureImpact removes silos by aggregating data across programs, increasing the efficiency and impact of the entire organization.

Ensure Equitable Outcomes

SureImpact empowers you to conduct equity analysis to ensure outcomes are equal for different populations.

Gain a Partner Dedicated to Your Success

At SureImpact, ensuring the success of our partners is at the heart of everything we do. Our Partner Success team supports you during your entire journey, from onboarding, to training, to technical support.