

Azure Well-Architected Review

Get detailed insights into your
workloads and implementations
from Azure experts

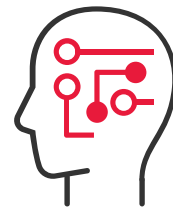
Get Expert Insights into your Azure Workloads with BDO Digital's Azure Well-Architected Review

BDO Digital has the technical and sector-specific expertise to conduct Azure Well-Architected Reviews, ensuring success as your Azure environment continues to grow and mature. These reviews provide you with the insights needed to confidently optimize your Azure estate now and into the future.

BDO Digital is a certified Azure Expert Managed Service Provider and is ready to partner with you throughout your digital transformation journey.



50,000+ GLOBAL CUSTOMERS



450+

CLOUD, DATA and AI
SPECIALISTS

Azure Well-Architected Review

GET EXPERT INSIGHTS INTO YOUR AZURE INFRASTRUCTURE
AND WORKLOADS

BDO Digital's diversity of expertise enables organizations all around the world to gain valuable insights into their technology solutions and Azure implementations. BDO's architects will help you review your workloads and implementations through the lenses of cost management, security, performance, reliability, and operations.

TYPICAL BUSINESS CHALLENGES



Security Posture

Changing products and industry recommended practices



Compliance Failure

Increased need for regulatory and shareholder compliance



Reduced Innovation

Complex and opaque solution architecture leading to higher overhead



Uncontrolled Costs

Large hosting costs resulting from complex or unmanaged solutions

HOW BDO CAN HELP



Comprehensive Review - BDO will help you review configurations from a holistic perspective



Business Posture - Align your security, compliance, costs, and performance posture with the broader market



Technical Goals - Get ready to safely integrate new technologies into your Azure environment



Forward Looking - Leverage recommendations to generate a prioritized roadmap of IT Transformation

Azure Well-Architected Review

Our approach maximizes value by balancing budget requirements, security, performance, and operational overhead.

Once the Azure Well-Architected Review is complete, BDO Digital can work with your organization to develop a plan to action the recommendations.

Estimated Review Timeline:

We estimate this assessment to take 2-3 weeks.

Key Deliverables Include:

- ▶ All data gathered by BDO's delivery teams
- ▶ A comprehensive list of recommendations for in-scope reviews
- ▶ A statement of work for executing recommended remediations



PHASE 1 Plan and Scope

Review business goals, Identify workload targets, determine the relevant subject matter experts, and gather data from stakeholders



PHASE 2 Assess

Use Microsoft tooling results to review findings thoroughly and provide practical recommendations that align with business goals



PHASE 3 Rationalize

Solution Architect driven alignment of business requirements with Well-Architected Review results



PHASE 4 Report

Present a detailed report of the assessment results along with a prioritized list of recommendations

Trust BDO as your Microsoft Partner

Strategic Alliance for your Success

Microsoft Practice by the numbers:

450+ Microsoft Certified Professionals

140+ Certified Data and AI Specialists

\$500M+ Technology Solutions Delivered

130+ Cloud Solution Provider Clients

BDO Global Recognised as Winner of Multiple
2024 Microsoft Partner of the Year Awards: **SMC-SI**
Empowering Customer Innovation globally, **Secure**
Productivity globally, and **Canada Country Winner**

[CLICK TO LEARN MORE ►](#)



PEOPLE

119,000+



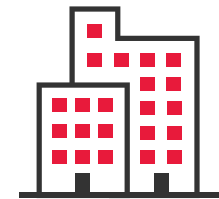
BDO DIGITAL
PROFESSIONALS

12,000



COUNTRIES AND
TERRITORIES

166



OFFICES

1,800

‘BDO’, ‘we’, ‘us’, and ‘our’ refer to one or more of BDO International Limited, its network of independent member firms (‘the BDO network’), and their related entities.

The BDO network is an international network of independent public accounting, tax and advisory firms which are members of BDO International Limited and perform professional services under the name and style of BDO (hereafter: ‘BDO Member Firms’). BDO International Limited is a UK company limited by guarantee. It is the governing entity of the BDO network.

Service provision within the BDO network is coordinated by Brussels Worldwide Services BV, a limited liability company incorporated in Belgium. Each of BDO International Limited, Brussels Worldwide Services BV and the BDO Member Firms is a separate legal entity and has no liability for another entity’s acts or omissions. Nothing in the arrangements or rules of the BDO network shall constitute or imply an agency relationship or a partnership between BDO International Limited, Brussels Worldwide Services BV and/or the BDO Member Firms. Neither BDO International Limited nor any other central entities of the BDO network provide services to clients.

BDO is the brand name for the BDO network and for each of the BDO Member Firms.

© Brussels Worldwide Services

