

# Cloud Central Azure Migration Accelerator

Migrate, modernize, and optimize with Microsoft  
Azure and BDO Cloud Central



# Migrate, Modernize, and Optimize Your Organization's Workloads with Microsoft Azure and BDO Cloud Central

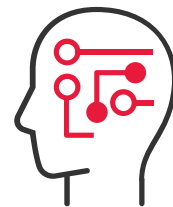
Transitioning to Azure from an on-prem or other hybrid infrastructure can be daunting, and many organizations struggle with achieving sustained Azure transformation at scale.

BDO empowers your organization to build a **future-ready, resilient cloud environment** aligned with your unique transformational goals.

We look forward to helping you achieve your transformation goals. **Faster.**



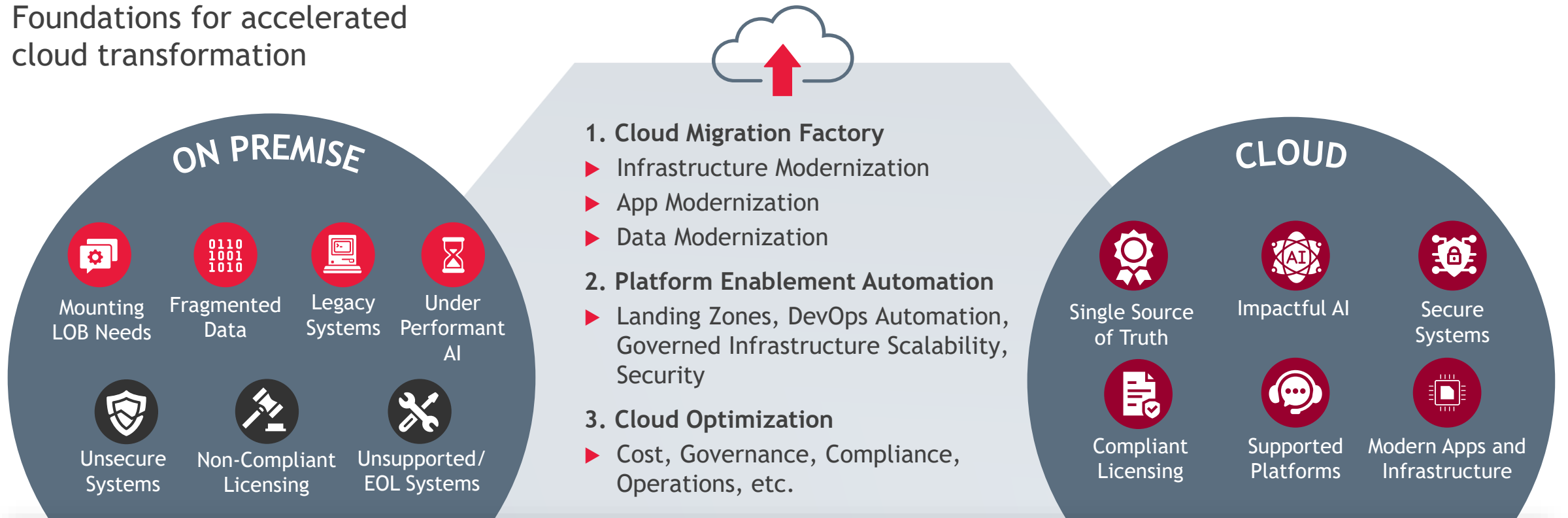
**50,000+** GLOBAL CUSTOMERS



**450+** CLOUD & DATA SPECIALISTS

# BDO Cloud Central Methodology

Foundations for accelerated cloud transformation



## CLOUD ASSESSMENT, STRATEGY AND GOVERNANCE

### READINESS

- ▶ Cloud migration strategy
- ▶ Application portfolio assessment
- ▶ Data migration assessment
- ▶ Infra modernization roadmap

### SECURITY

- ▶ Cloud risk and security framework
- ▶ Patterns and policies (policy as code)
- ▶ Compliance assessments

### COST MANAGEMENT

- ▶ Cloud optimization plan (COP)
- ▶ Cost control and visibility
- ▶ Cloud native benefits realization
- ▶ Sustainability and net zero strategy

### OPERATIONS

- ▶ Governance
- ▶ Operational support
- ▶ Change management
- ▶ Continuous improvement

# Generative AI Accelerator with Azure OpenAI and BDO's Intelligent Virtual Assistant

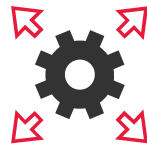
Migrate, modernize, and optimize your organization's workloads with Microsoft Azure and BDO Cloud Central. Transitioning from legacy, on-prem, or hybrid systems to a modern cloud infrastructure provides your business with the flexibility, security, and resilience needed to embrace innovation.

## TYPICAL CLIENT CONCERNS



### Legacy Applications

Legacy applications can hold back business transformation and increase operational overhead



### IT Scalability and Management

Business growth and performance can be constrained by technology that can't scale efficiently



### Hardware and Software Lifecycle

End-of-Life hardware & software require significant capital investment



### Technology Innovation

Adopting and integrating new technologies can be too costly to implement

## HOW BDO CAN HELP



**A Comprehensive Strategy**  
BDO will help you determine the best path for long-term transformation success



**Platform Automation**  
Streamline tasks like management and reporting with unified first party products



**Adopt Platform-as-a-Service**  
Mitigate hardware and software end-of-life by transforming workloads with PaaS technologies



**Continuous Optimization**  
Maximize your cloud investments with built-in monitoring, cost controls, and governance

# Migrate and Modernize with BDO's Cloud Central

BDO's Cloud Central will employ a structured approach to help your organization transition from legacy, on-premises, or hybrid systems to a modern cloud infrastructure.

## Estimated project timeline:

We estimate the initial assessment and PoC to take 4-6 weeks.

## Typical pilot includes:

- ▶ Secure Landing Zones
- ▶ Cost-Optimized Workload Deployments
- ▶ Security & Governance Framework
- ▶ Cloud Transformation Roadmap



### PHASE 1 Assess and Plan

Review current infrastructure and applications for opportunities and risks, with projected TCO and velocity.

### PHASE 2 Design and Architect

Design and configure cloud landing zones, integrating network and security controls to protect data.

### PHASE 3 Migrate and Optimize

Securely migrate selected workloads to Azure, including Windows Server, SQL Server, Virtual Desktop, and Linux applications, validating the process and performance.

### PHASE 4 Innovate

A roadmap for future cloud expansion and first-party adoption, tailored to long-term business goals.

# Cloud Data Strategy and Modernization for National Healthcare Provider

## Industry:

- ▶ Healthcare

## Brief Company Description:

- ▶ An American healthcare network with staff and facilities management operations
- ▶ 2500 employees across multiple states

## Area of Focus:

- ▶ Legacy IT Infrastructure Modernization
- ▶ Modern Data Platform Implementation
- ▶ Technology Operations Optimization

## BUSINESS CHALLENGE

- ▶ A leading healthcare system was facing rising costs and operational inefficiencies. Their outdated on-premises IT infrastructure was also reaching end-of-life.
- ▶ This customer needed a scalable solution to increase capacity and performance, allowing for organizational growth while still maintaining compliance requirements.

## SOLUTION

- ▶ BDO deployed a secure Azure Landing Zone with policy and governance controls
- ▶ Transformed eligible SQL servers to Azure SQL and connected disparate data sources to Microsoft Fabric and Power BI
- ▶ Migrated remaining servers to Azure VMs
- ▶ Provided strategy on HIPAA-compliant decommissioning of the on-premises environment

## RESULTS

- ▶ The hospital network saw a **\$4.4M** cost reduction over five years
- ▶ Accelerated innovation by deploying new data reporting workloads to streamline operations
- ▶ Significant reduction in security and compliance risk
- ▶ Reduced IT management with unified product stack, including Azure Backup, Azure Monitor, and Azure Virtual Desktop

# Cloud Migration Streamlines Acquisition for Retail Marketing Firm

## Industry:

- ▶ Retail Marketing

## Brief Company Description:

- ▶ A global retail and consumer goods marketing firm with considerable year-over-year growth
- ▶ Headcount and marketplace offerings grown by acquisition

## Area of Focus:

- ▶ Integrate systems, technologies, and workloads from acquired firms
- ▶ Streamline IT Operations and Environment Administration

## BUSINESS CHALLENGE

- ▶ An industry-leading retail marketing organization had outgrown their legacy IT environment while also needing to merge systems with a newly acquired competitor. Both entities were constrained by aging infrastructure.
- ▶ Key requirements included application uptime and data availability.

## SOLUTION

- ▶ BDO worked with the organization to define and implement a highly available data platform
- ▶ BDO migrated the client's and the newly acquired company's aging infrastructure to Azure and enabled critical workloads to be highly available
- ▶ Implemented governance, security, and cost controls ensuring improved management and security posture

## RESULTS

- ▶ This organization realized over **\$1M** in cost savings in the first two years
- ▶ Increased resiliency with highly available applications across multiple geographies
- ▶ Unified and automated reporting technologies with a Microsoft Fabric and Power BI
- ▶ Enabled greater data science workloads for deeper customer analytics

# Trust BDO as your Microsoft Partner

Strategic Alliance for your Success

Microsoft Practice by the numbers:

**600+** Microsoft Certified Professionals

**400+** Certified Data & AI Specialists

**\$585M+** Technology Solutions Delivered in 2024



PEOPLE

**119,000+**



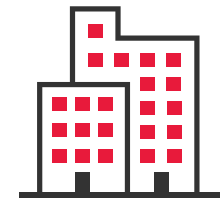
BDO DIGITAL  
PROFESSIONALS

**3,500+**



COUNTRIES AND  
TERRITORIES

**166**



OFFICES

**1,800**

[CLICK TO LEARN MORE ►](#)



'BDO', 'we', 'us', and 'our' refer to one or more of BDO International Limited, its network of independent member firms ('the BDO network'), and their related entities.

The BDO network is an international network of independent public accounting, tax and advisory firms which are members of BDO International Limited and perform professional services under the name and style of BDO (hereafter: 'BDO Member Firms'). BDO International Limited is a UK company limited by guarantee. It is the governing entity of the BDO network.

Service provision within the BDO network is coordinated by Brussels Worldwide Services BV, a limited liability company incorporated in Belgium. Each of BDO International Limited, Brussels Worldwide Services BV and the BDO Member Firms is a separate legal entity and has no liability for another entity's acts or omissions. Nothing in the arrangements or rules of the BDO network shall constitute or imply an agency relationship or a partnership between BDO International Limited, Brussels Worldwide Services BV and/or the BDO Member Firms. Neither BDO International Limited nor any other central entities of the BDO network provide services to clients.

BDO is the brand name for the BDO network and for each of the BDO Member Firms.

© Brussels Worldwide Services

