

# Modern Data Platform for Enhanced Sustainability

Powered by Microsoft Sustainability Manager  
and Microsoft Fabric



# Define Your Vision, Assess Readiness, and Gain Expert Support for Your Sustainability Goals

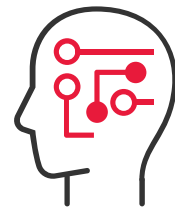
Define, track, and exceed your sustainability goals with a tailored, data-driven approach, powered by Microsoft Sustainability Manager and Microsoft Fabric.

BDO empowers your organization to build a **future-ready, resilient environmental strategy** aligned with your unique sustainability goals.

We look forward to helping you achieve your sustainability goals. **Faster.**



**50,000+** GLOBAL CUSTOMERS



**200+** DATA & AI SPECIALISTS

# Data Driven Platform for Sustainability

Businesses all over the world are facing growing pressure to meet sustainability goals but siloed data complicates reporting, obscures insights, and hinders goal tracking.

BDO Digital's 4-Week assessment is a fast-track to reliable baseline reporting and tracking sustainability progress.

## TYPICAL CLIENT CONCERNS



### Fragmented Data

Unify data sources that track production, carbon impact, and environmental investments into a single platform



### Labor Intensive Reporting

Reduce the time it takes to track current sustainability metrics with automated reporting



### Compliance Requirements

Quickly show compliance and track improvement



### Pollution Insights

Track impact and discover opportunities to improve your organization's sustainability posture

## HOW BDO CAN HELP



**A Comprehensive Strategy** - BDO will help you determine the best path for long-term sustainability success



**Improved Carbon Footprint** - View your organization's carbon impact in one place



**Data Integration and Reporting** - Integrate carbon and operational reporting into a single, modern data platform



**Brand Integration** - Get recommendations for your organization's ongoing sustainability journey

# Data Driven Platform for Sustainability

BDO's Modern Data Platform for Enhanced Sustainability will employ a structured approach to help your organization define a sustainability vision, assess readiness, and get expert support to advance your sustainability posture.

## Estimated project timeline:

We estimate this initial assessment to take 4 weeks.

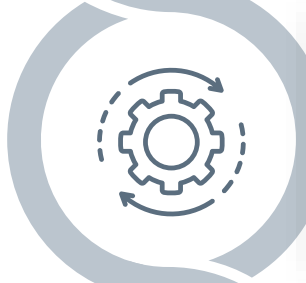
## Typical pilot includes:

- ▶ Defined Sustainability Strategy
- ▶ Data Collection and Reporting Strategy
- ▶ Compliance Strategy
- ▶ Brand, Business, Financial Integration



### PHASE 1 Consultation

In-depth consultation to understand your sustainability vision, business needs, and reporting requirements



### PHASE 2 Maturity Assessment

We review your existing digital infrastructure and data



### PHASE 3 Analysis

We identify challenges and opportunities to improve reporting and sustainability profile



### PHASE 4 Business Case and Roadmap

Together, we will create your sustainability business case and implementation strategy

# Environmental Impact Reporting for a Global Metals Mining Firm

## Industry:

- ▶ Metals Mining

## Brief Company Description:

- ▶ A global metals producer with mining, development, and exploration operations.
- ▶ 4,500+ employees across multiple sites

## Area of Focus:

- ▶ Data management and Environmental Impact Reporting

## BUSINESS CHALLENGE

- ▶ A global metals producer comprised of multiple sub-companies and sites, each having unique platforms to track and manage financial, compliance, and operational reporting.
- ▶ The process to compile environmental impact information across the firm required months-long coordination.

## SOLUTION

- ▶ With each site having different platforms for finance and operations, BDO developed a program to centralize and standardize the sustainability reporting system.
- ▶ BDO built a modern data platform to connect each mining site and centralize reporting data, powered by Microsoft Fabric and Microsoft Sustainability Manager.

## RESULTS

- ▶ The programs delivered the standardized and accurate data needed reports in near-real time, **saving 1000+ hours** of time per year.
- ▶ Using Microsoft Sustainability Manager (MSM), BDO Digital helped develop a unified data platform to support broader business needs.
- ▶ With a modern data platform in place, this customer is now unifying additional data workloads that support finance, sales, and operations.

# Trust BDO As Your Microsoft Partner

Strategic Alliance for your Success

Microsoft Practice by the numbers:

**600+** Microsoft Certified Professionals

**400+** Certified Data and AI Specialists

**\$585M+** Technology Solutions Delivered in 2024



PEOPLE

**119,000+**



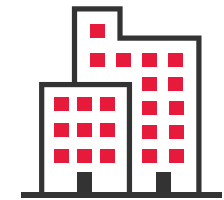
BDO DIGITAL  
PROFESSIONALS

**3,500+**



COUNTRIES AND  
TERRITORIES

**166**



OFFICES

**1,800**

[CLICK TO LEARN MORE ▶](#)

'BDO', 'we', 'us', and 'our' refer to one or more of BDO International Limited, its network of independent member firms ('the BDO network'), and their related entities.

The BDO network is an international network of independent public accounting, tax and advisory firms which are members of BDO International Limited and perform professional services under the name and style of BDO (hereafter: 'BDO Member Firms'). BDO International Limited is a UK company limited by guarantee. It is the governing entity of the BDO network.

Service provision within the BDO network is coordinated by Brussels Worldwide Services BV, a limited liability company incorporated in Belgium. Each of BDO International Limited, Brussels Worldwide Services BV and the BDO Member Firms is a separate legal entity and has no liability for another entity's acts or omissions. Nothing in the arrangements or rules of the BDO network shall constitute or imply an agency relationship or a partnership between BDO International Limited, Brussels Worldwide Services BV and/or the BDO Member Firms. Neither BDO International Limited nor any other central entities of the BDO network provide services to clients.

BDO is the brand name for the BDO network and for each of the BDO Member Firms.

© Brussels Worldwide Services

