



BDO DIGITAL

Microsoft Copilot Activation and Implementation

Powered by Microsoft Copilot and BDO



Maximize Your Investment in the Microsoft Copilot Suite

Activate and implement all available features across your organization.

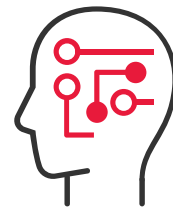
Reimagine your enterprise potential with Microsoft 365 Copilot, backed by BDO's proven advisory expertise and industry-specific transformation framework.

BDO empowers your organization to build a **collaborative, secure, and AI powered organization** aligned with your unique workplace goals.

We look forward to helping you achieve your Copilot goals. **Faster.**



50,000+ GLOBAL CUSTOMERS



250+ MODERN WORK, DATA,
AND AI SPECIALISTS

BDO's Microsoft Copilot Activation and Implementation Overview

According to recent data from Microsoft, around 75% of knowledge workers are already using AI at work, with 78% of them bringing their personal AI solutions. BDO's strategic planning framework helps you thoughtfully integrate and deploy Microsoft Copilot, ensuring that your organization maximizes the value of AI while minimizing risk.

TYPICAL CLIENT CONCERNS



External Data Leaks

Data and information shared to AI solutions may contain secret information



Internal Data Privacy

Employees may have access to information beyond their role



Data Availability

Information for AI to consume is not available or easily connected



Enablement

Investments in AI solutions may not produce expected ROI if people don't use it

HOW BDO CAN HELP



Keep Your Data Confidential - All data and information used by Copilot stays in your Microsoft tenant



Maintain Internal Data Control - Internal resources are properly secured so users only have access to the right data



Integrate Data Sources - Connect your data sources to Copilot for maximum usability



Enable Adoption - Get support and drive adoption to maximize investment

BDO's Microsoft Copilot Activation and Implementation Overview

Leveraging BDO's Microsoft 365 Copilot Care+ Framework, we'll quickly help you assess your readiness and then accelerate your deployment of Microsoft 365 Copilot in just 12 weeks.

Estimated project timeline:

We estimate the assessment, deployment, and Care+ for Copilot to take 12 weeks.

Typical implementation includes:

- ▶ Readiness Analysis and Advisory Documentation
- ▶ License Configuration and Deployment
- ▶ Technology and Feature Configuration
- ▶ Roadmap for Deeper Integration



PHASE 1 Readiness Assessment

In-depth consultation to understand your digital environment and employee readiness

PHASE 2 Adoption and Change Management

Develop deployment strategy and employee engagement center of excellence

PHASE 3 Deployment and Configuration

Configure your digital estate, activate Microsoft Copilot, and execute adoption and change management strategy

PHASE 4 BDO Copilot Care+

Maximize investment with training programs, usage analytics, and content management

Trust BDO as your Microsoft Partner

Strategic Alliance for your Success

Microsoft Practice by the numbers:

450+ Microsoft Certified Professionals

250+ Modern Work, Data, and AI Specialists

\$585M+ Technology Solutions Delivered

130+ Cloud Solution Provider Clients

[CLICK TO LEARN MORE ►](#)



PEOPLE

119,000+



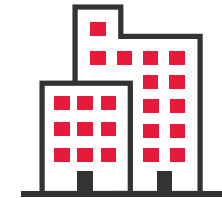
BDO DIGITAL
PROFESSIONALS

12,000



COUNTRIES AND
TERRITORIES

166



OFFICES

1,800

‘BDO’, ‘we’, ‘us’, and ‘our’ refer to one or more of BDO International Limited, its network of independent member firms (‘the BDO network’), and their related entities.

The BDO network is an international network of independent public accounting, tax and advisory firms which are members of BDO International Limited and perform professional services under the name and style of BDO (hereafter: ‘BDO Member Firms’). BDO International Limited is a UK company limited by guarantee. It is the governing entity of the BDO network.

Service provision within the BDO network is coordinated by Brussels Worldwide Services BV, a limited liability company incorporated in Belgium. Each of BDO International Limited, Brussels Worldwide Services BV and the BDO Member Firms is a separate legal entity and has no liability for another entity’s acts or omissions. Nothing in the arrangements or rules of the BDO network shall constitute or imply an agency relationship or a partnership between BDO International Limited, Brussels Worldwide Services BV and/or the BDO Member Firms. Neither BDO International Limited nor any other central entities of the BDO network provide services to clients.

BDO is the brand name for the BDO network and for each of the BDO Member Firms.

© Brussels Worldwide Services

