

**The only  
compliance audit  
application available  
as part of an  
integrated system  
of assortment  
and space  
planning**

Creating customer-centric assortments and planograms designed to meet your strategic goals is an art unto itself. But even if you're leveraging the best AI-based clustering, assortment, and space tools available, a category manager can never fully control – or even know – how accurately the plans are being executed in a given store... until now

The National Association of Retail Marketing estimates that planograms, on average, go out of compliance at the rate of **10% per week**.

At a time where in-store execution is becoming increasingly more complex with fast-changing shopper preferences, labor shortages, and shrinking lead-times, our Store Intelligence solution helps retailers respond with agility and accuracy.

## The problem

- Lost sales due to low on-shelf availability (OSA)
- Non-compliant planograms
- Inaccurate pricing/promotions
- Non-optimized labor
- Increased competition

## The solution

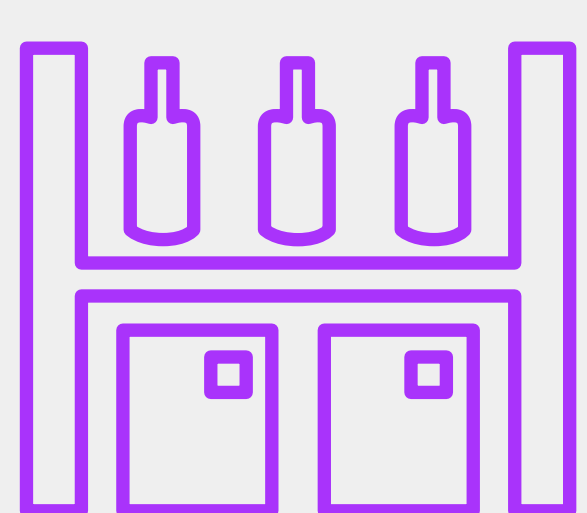
Store Intelligence enables retailers and suppliers to:

- Connect execution to the plan with real-time insights
- Manage demand influencers and disruptions as they happen
- Support dynamic and continuous in-store execution
- Monetize product data to create a win/win for retailers and suppliers

## What sets us apart

- The fastest and most accurate combined AI and optical character recognition (OCR)
- Real-time alerts and actionable insights
- Prioritized worklists for best performance
- Product data monetization service
- Ability to integrate into our complete assortment and space platform

## The results



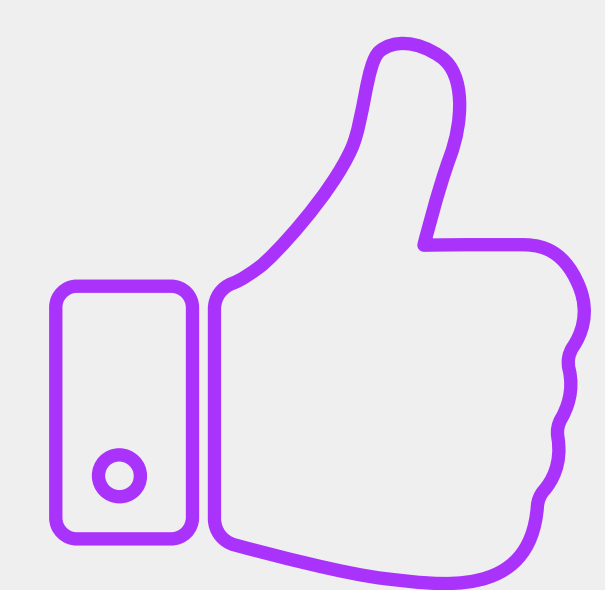
Increased on-shelf  
availability  
**up to 11%**



Increased  
sales  
**up to 5%**

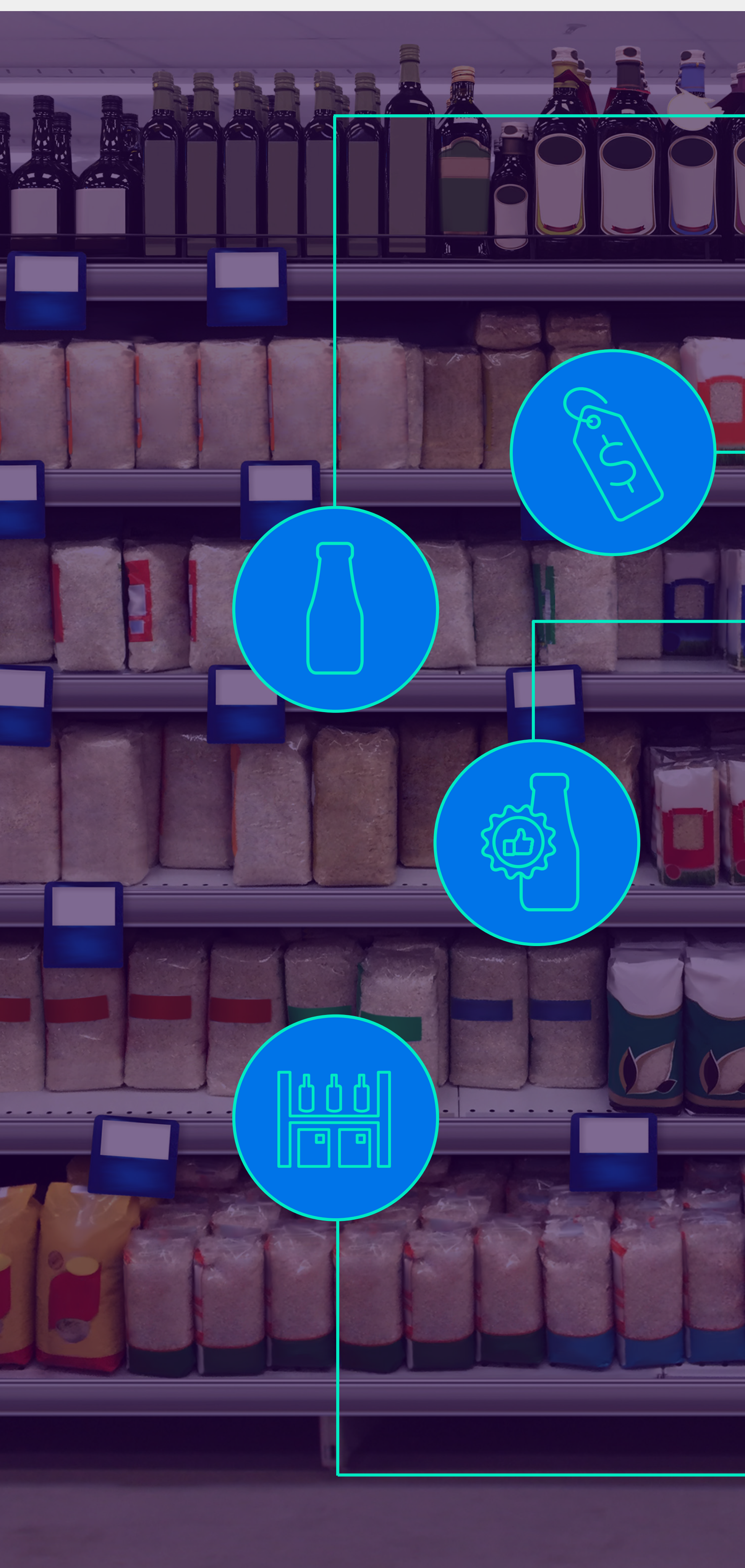


Optimized  
labor  
**up to 60%**



Improved  
planogram compliance  
**up to 23%**

## Store Intelligence Key Capabilities



Out-of-Stock Detection	Out of stock and misplaced item detection that compares to stock levels and alerts/actions to fix
Planogram Compliance	Realogram vs. planogram comparison and recommended next best actions
Pricing Compliance	AI and optical character recognition (OCR) achieves pricing and promotion detection and compliance
Inventory Accuracy	Comparison of on-shelf vs. balance on hand. Identify out-of-stocks from in-store, backroom or warehouse.
AI Driven Action Worklist	AI driven insights and next best actions for out-of-stocks, pricing compliance, and planogram compliance all prioritized upon best store performance
Hardware Agnostic	Mobile app enabled, robots, fixed cameras, or any combination thereof
Surveys	Store observation surveys
Product Data Monetization	Allows for the exchange of data to help partners manage labor, supply chain, and orders
Assortment & Space Planning Integration	The only AI driven compliance audit application available as part of an integrated system of assortment and space planning

While Store Intelligence can be used as a standalone solution, it also integrates with SymphonyAI's assortment and space solutions to deliver the only AI driven compliance audit application available as part of an integrated system of assortment and space planning.

This gives category managers full end-to-end capabilities, from initial category review, optimization and execution, and on through continuous real-time planogram monitoring and rapid remediation to close gaps and maximize delivery to financial and business targets.



### 1M+ UNIQUE SKUs TRAINED

The only computer vision at scale to cover the full store for grocery retailers.



### OVER 10,000+ RETAIL STORES

Our computer vision enables physical store digitization, insights and automation at scale.



### SERVING THE TOP RETAILERS AND SUPPLIERS GLOBALLY

Top 4 out of 5 grocery US retailers. Top 2 retailers in Asia.



### ENTERPRISE INTEGRATION

Deployments with enterprise-wide integration to drive store insights automation and sales.