

SysTools EML Converter Software

Verified Software Tool to Convert EML Files to MSG, PST, MBOX, NSF, HTML, PDF, MHT, TXT, Office 365 Account

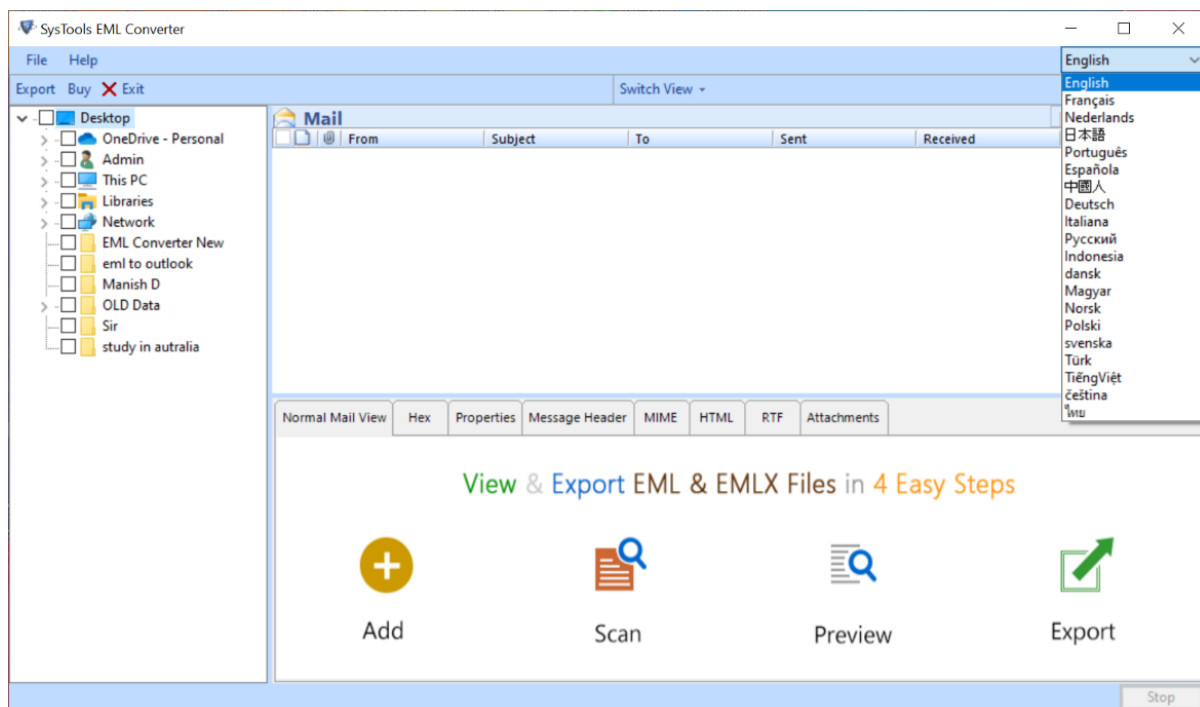
SysTools EML Converter is an advanced software solution for converting EML files into multiple formats, making it easier to access and manage emails across various platforms and applications. Designed to support a range of output formats, including PST, MBOX, MSG, PDF, HTML, and more, this tool allows users to convert individual or bulk EML files with ease.

[SysTools EML to PST Converter](#) is perfect for organizations and individuals looking to streamline email management, migration, or archiving, and is compatible with both Windows and Mac operating systems.

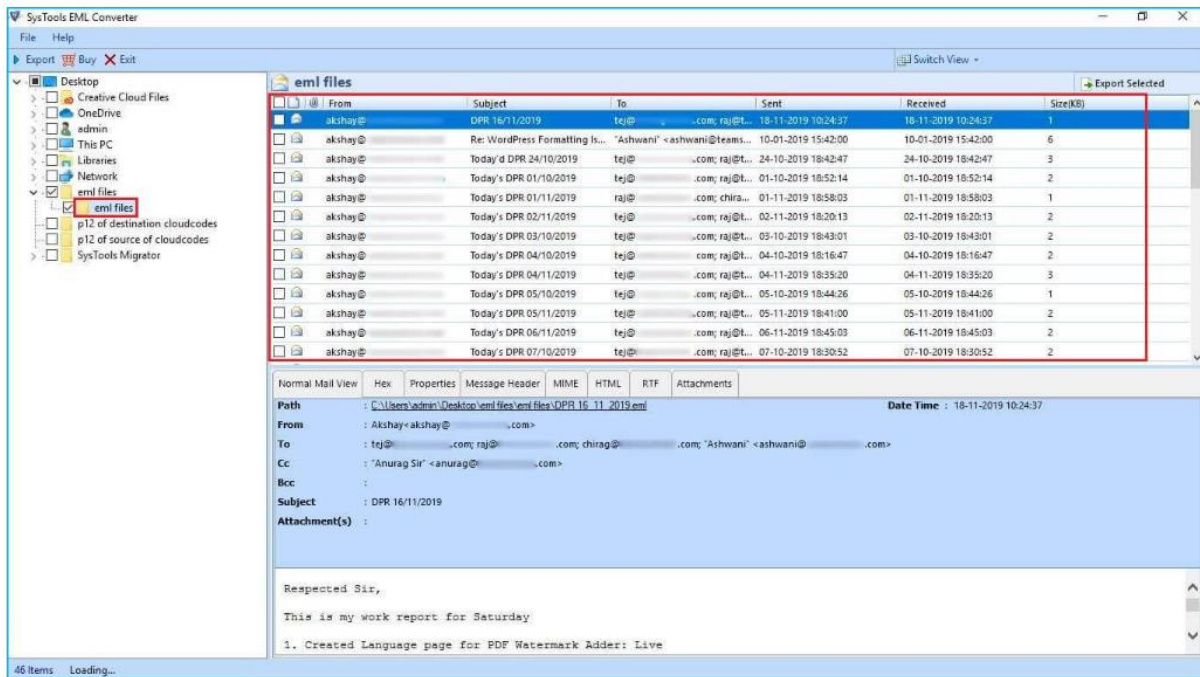
Steps to Convert EML File to PST Format Using SysTools Software

Major working steps are listed in below section, follow these steps to convert EML to PST file format.

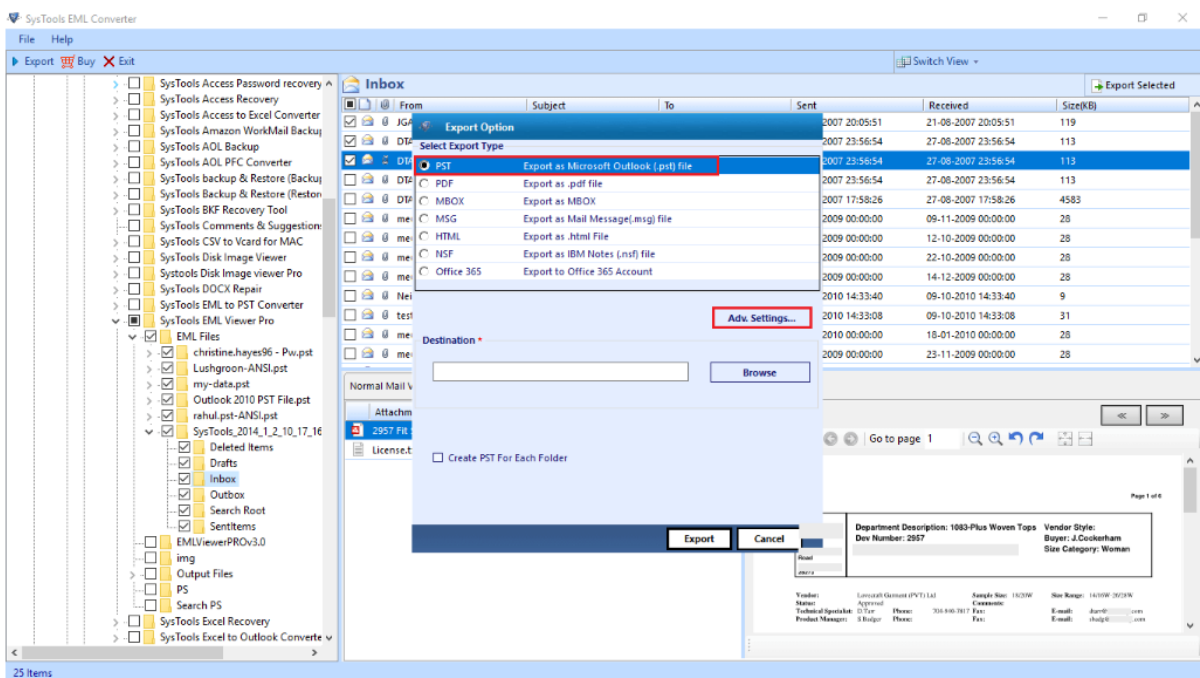
Step-1: File Selection and Import: Users can start by adding individual EML files or importing an entire folder of EML files to the converter. The tool supports batch processing, making it efficient for users with large volumes of EML files to convert.



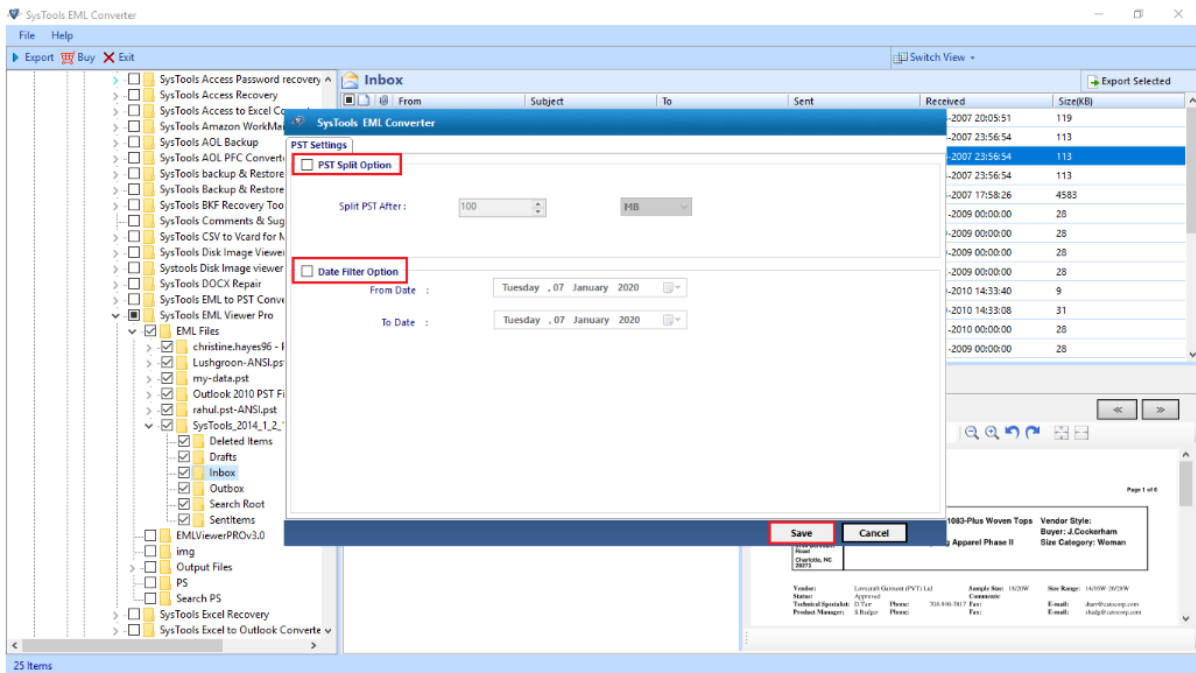
Step-2: Preview and Sorting: After importing, the software offers a preview feature, allowing users to view email contents, including attachments and metadata. This step provides flexibility in verifying or selecting specific emails to convert based on date range or other filters.



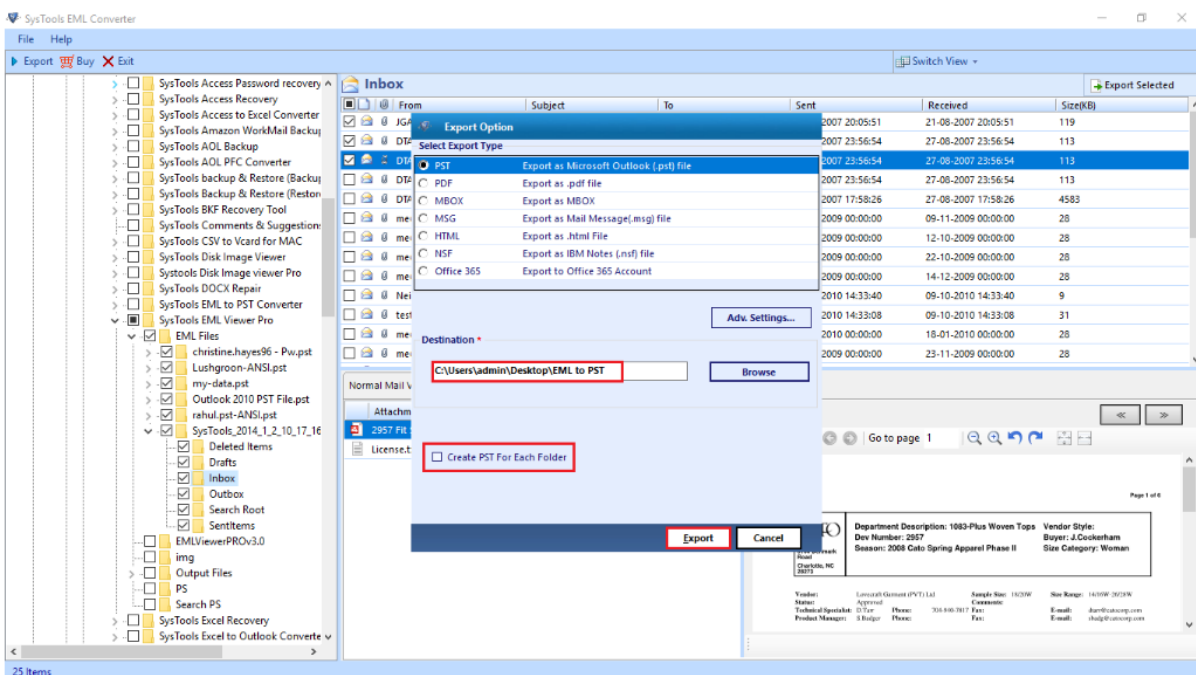
Step-3: Choose Output Format: SysTools EML Converter supports multiple output formats to suit diverse needs, including PST for Outlook, MBOX for various email clients, PDF for archiving, HTML for browser access, and MSG for individual message backup. Users can select the target format from the available options. Let's Start with PST file format.



Step-4: Customization Options: The tool offers various customization settings, such as file naming conventions, selective date-based conversion, and options for saving attachments either within the email file or in separate folders.



Step-5: Conversion and Export: Once all settings are configured, users can initiate the conversion process. The tool completes the conversion quickly, with high accuracy, preserving folder structure and email properties such as To, From, Subject, and Timestamp. The output files can then be accessed from the specified destination.



Final Points

- **Compatibility:** The software supports all EML files generated by popular email clients like Windows Live Mail, Thunderbird, Apple Mail, and more.
- **Preserves Data Integrity:** All metadata, attachments, and folder hierarchies are retained, ensuring a faithful conversion of email information.

- **Batch Processing:** Users can convert multiple EML files at once, making it efficient for large-scale migrations or data management tasks.
- **Filter and Sort Options:** With the date range filter and sorting capabilities, users can selectively convert only the necessary emails.
- **Ease of Use:** SysTools EML Converter offers an intuitive interface designed for users of all technical levels, providing step-by-step conversion guidance.