

SysTools Exchange Recovery Software

Best Software to Recover Data from Exchange EDB File and Save in MBOX, PDF, EML, MSG, PST, HTML, Live Exchange Server, Office 365

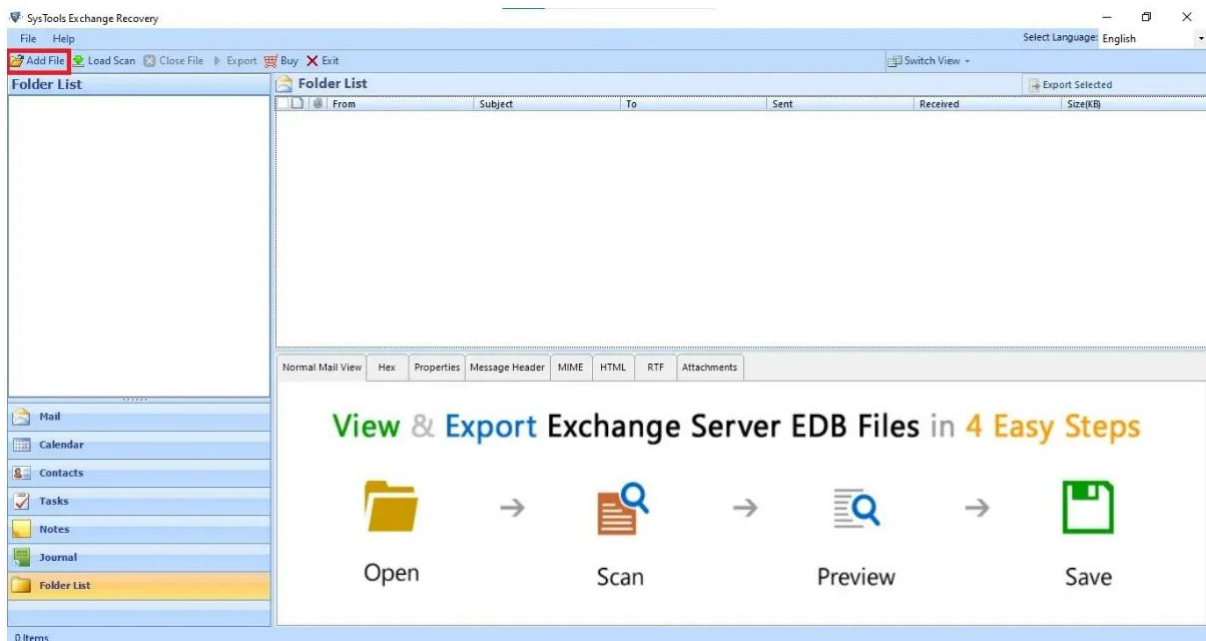
SysTools Exchange Recovery Tool is a comprehensive solution for repairing and recovering data from corrupted, damaged, or inaccessible Exchange Server EDB files. It allows users to restore emails, contacts, calendars, tasks, journals, and attachments from EDB files and export them to PST, EML, MSG, PDF, HTML, or live Exchange/Microsoft 365.

Designed for seamless operation and data integrity, the [SysTools Exchange Recovery Tool](#) is ideal for IT administrators and organizations managing Exchange database issues or migrating data to other platforms.

Steps to Recover Data from Exchange Mailbox Using SysTools Software

All the instructions are listed below, simply follow to recover data from Exchange mailbox. Visit official webpage and download the utility and then install.

Step-1: Load EDB Files: Users can add single or multiple corrupted EDB files for recovery. The tool supports both private (Priv.edb) and public (Pub.edb) folders.



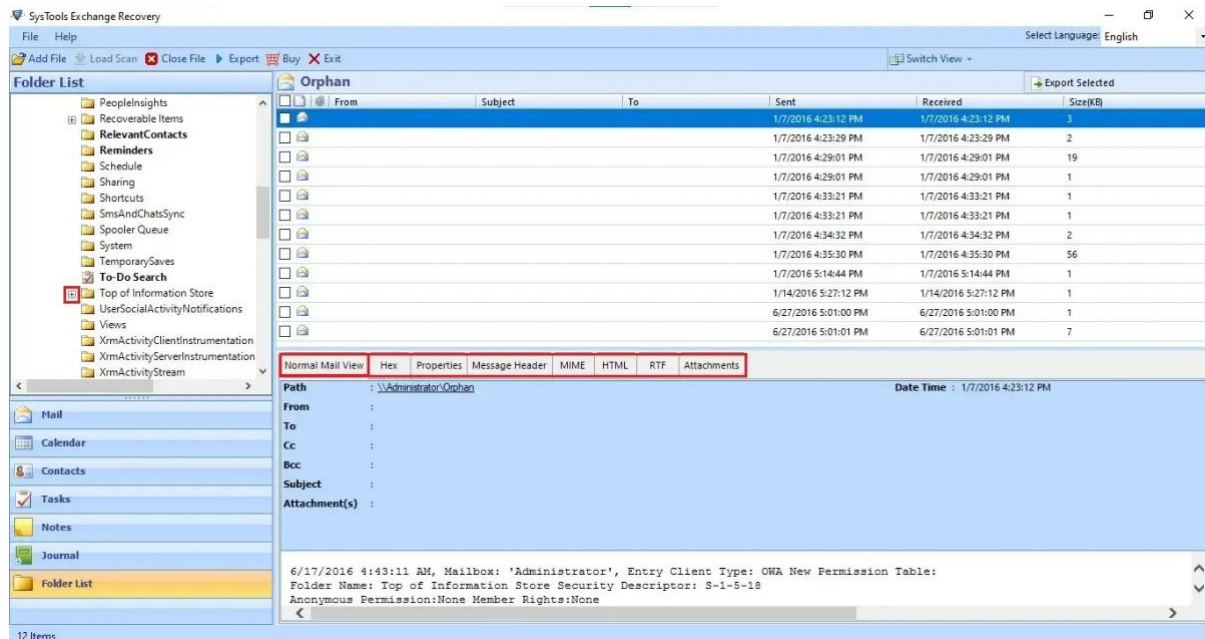
Step-2: Scanning Options:

- **Quick Scan:** For minor corruption issues and faster recovery.
- **Advanced Scan:** For severely corrupted EDB files, ensuring complete data restoration.

The screenshot shows the 'Add File' dialog box with the following sections and controls:

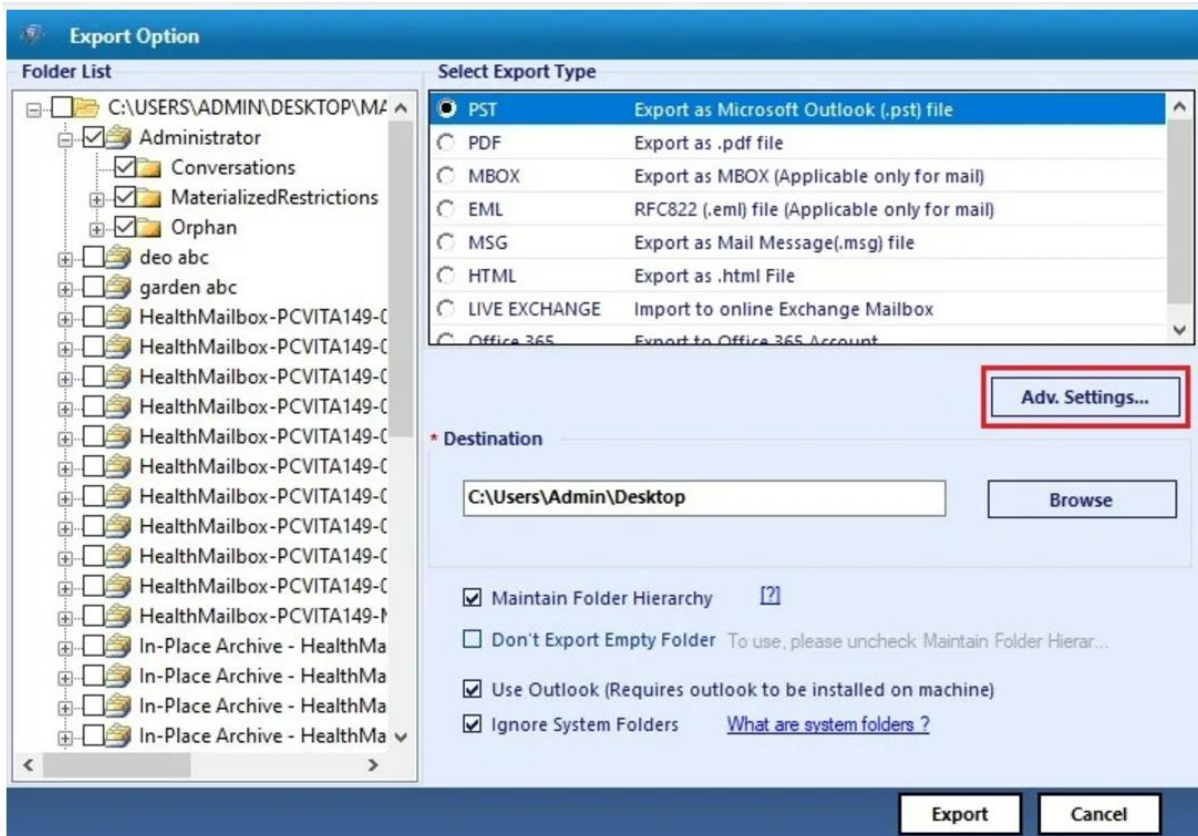
- Add File Option:** Radio buttons for 'Select File' (selected) and 'Search File'.
- Select File:** Text boxes for 'EDB File' (containing 'D:\Downloads\Mailbox Database 0252558612.edb') and 'STM File (if applicable)', each with a browse button ('...').
- Search File:** Radio buttons for 'Search Selected Drive' (selected) and 'Search All Drive'. A dropdown menu shows 'C:\'.
- Table:** A table with columns 'File Name', 'File Path', and 'File size(MB)'. The table is currently empty.
- Decrypt Emails:** A checkbox for 'Remove Encryption' with the note '(Select if Emails are encrypted with SMIME or OpenPGP)'. It is currently unchecked.
- Scan Mode:** Radio buttons for 'Quick' (selected) and 'Advance'. Below them is the text: 'Use this option if the file has minimum corruption.' This section is highlighted with a red border.
- App Storage Path ?:** A text box for 'Storage Folder' (containing 'E:\Storage files\CDTPL') with a browse button ('...').
- Buttons:** 'Add' and 'Cancel' buttons at the bottom right. The 'Add' button is highlighted with a red border.

Step-3: Preview Recovered Data: After scanning, the tool displays a detailed preview of all recoverable items, including emails, calendars, contacts, tasks, journals, and notes, along with their metadata and attachments.



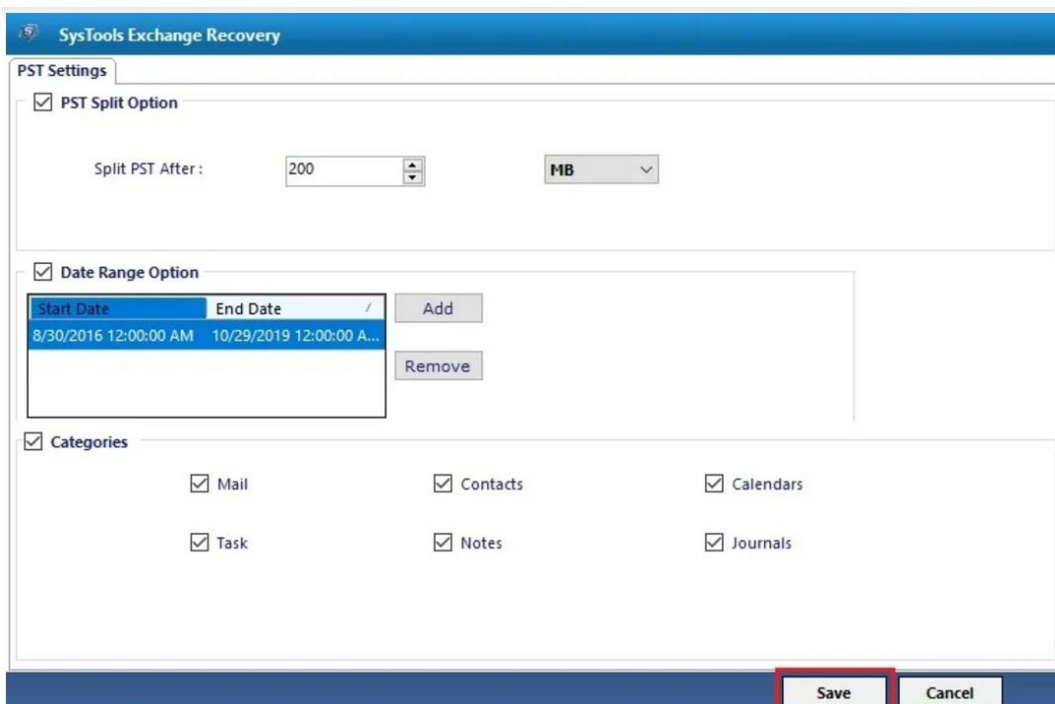
Step-4: Select Export Option: The software offers multiple export formats and destinations:

- **PST:** For importing data into Microsoft Outlook.
- **EML, MSG, PDF, HTML:** For flexible sharing and archiving.
- **Live Exchange:** Direct export to a live Exchange Server.
- **Microsoft 365:** Migrate recovered data to Microsoft 365 accounts.

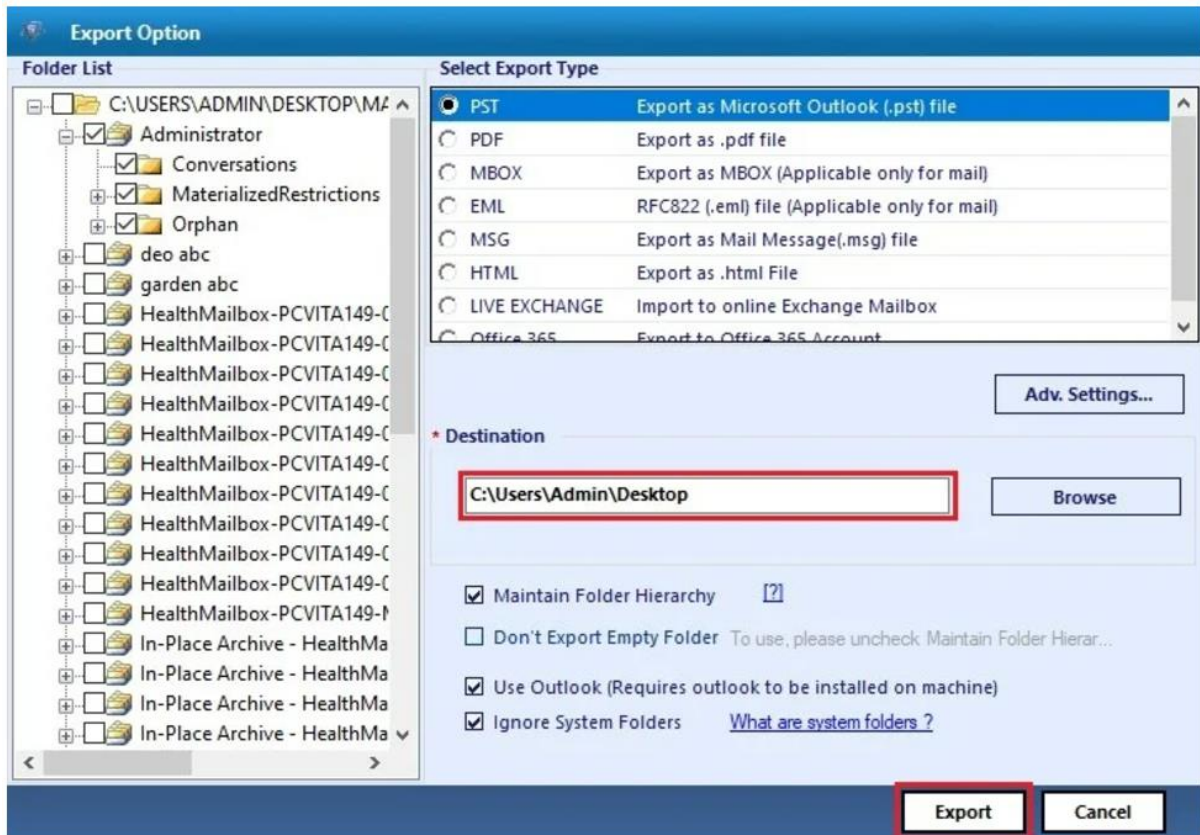


Step-5: Apply Filters: Users can refine the recovery process with advanced filtering options:

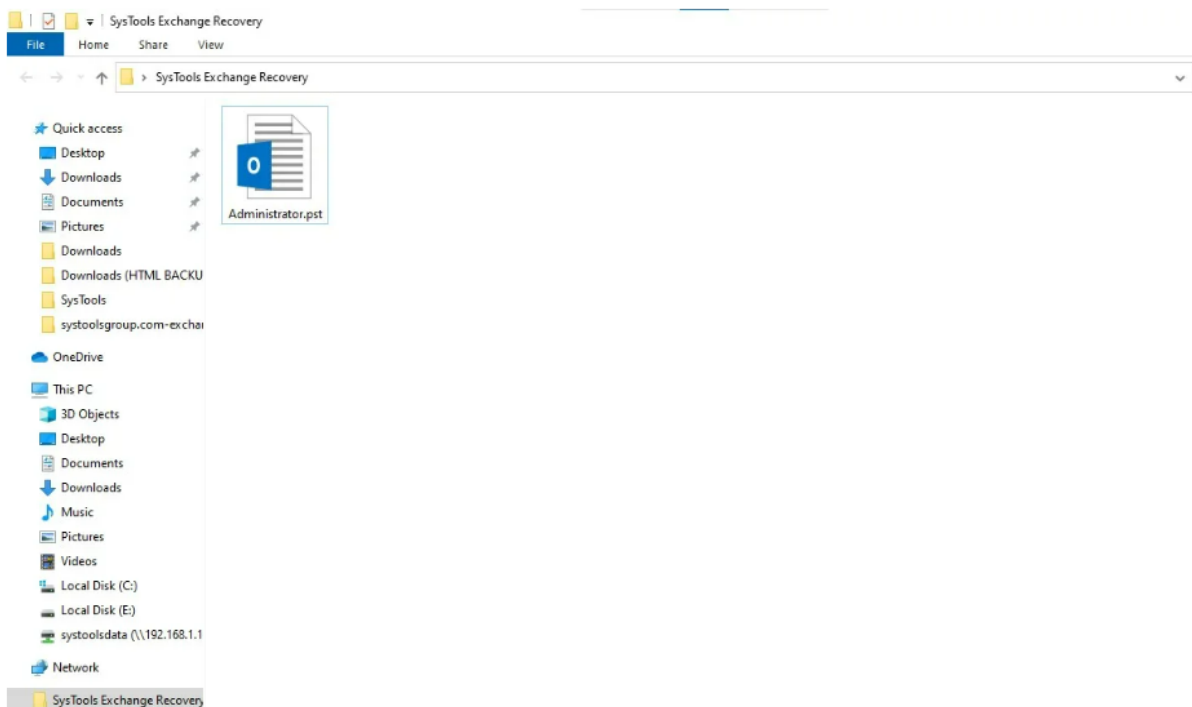
- **Date Filters:** Export items from a specific date range.
- **Selective Folder Recovery:** Recover and export specific folders or mailboxes.
- **Item Type Filtering:** Export emails, contacts, or calendars as needed.



Step-6: Export and Save: Once configurations are set, the tool exports the recovered data while retaining its original properties, metadata, and folder hierarchy.



Step-7: Post-Recovery Report: The software generates a detailed report summarizing the recovery and export process, including the count of recovered items and their destinations.



Final Points

- **Complete Exchange Recovery:** Recover emails, contacts, calendars, tasks, journals, and more from corrupted or inaccessible EDB files.
- **Dual Scanning Modes:** Quick and Advanced Scan options handle all levels of EDB file corruption.
- **Versatile Export Options:** Save data to PST, EML, MSG, PDF, HTML, or directly export to live Exchange/Microsoft 365.
- **Selective Recovery:** Apply filters to recover specific items, folders, or data within a date range.
- **Folder Hierarchy Retention:** Maintains the original folder structure during recovery and export.
- **Support for Large EDB Files:** Handles oversized EDB files without performance issues.
- **User-Friendly Interface:** Designed for IT administrators and non-technical users alike.

SysTools Exchange Recovery Tool is a trusted, efficient, and versatile solution for organizations seeking to restore and manage Exchange database data. It ensures seamless recovery, migration, and data integrity, making it a preferred choice for Exchange Server administrators.