

SysTools OST Recovery Software

MVPs Verified Software to Recover Lost Data from Orphaned, Corrupted, Damaged OST File and Save in Healthy PST, PDF, EML, MSG, HTML and Microsoft 365 Account

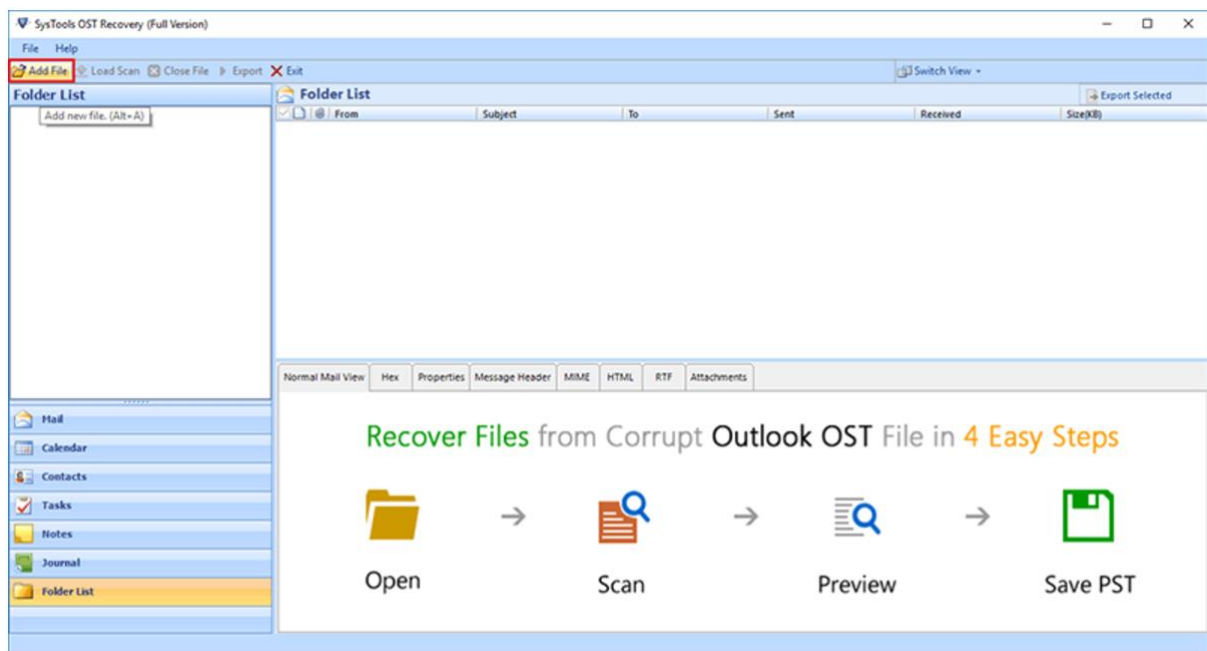
SysTools OST Recovery Tool is a powerful solution designed to recover data from corrupted, orphaned, or inaccessible OST files. It allows users to restore emails, calendars, contacts, tasks, notes, and journals from OST files with complete accuracy.

The [OST Recovery Tool](#) ensures data integrity while providing advanced export options to save the recovered data in PST, EML, MSG, PDF, HTML, or other formats. With its intuitive interface and robust recovery algorithms, the SysTools OST Recovery Tool is the ultimate choice for individuals and businesses facing OST file corruption or accessibility issues.

Steps to Recover Data from OST File using SysTools OST Recovery Tool

All the instructions are listed below, simply follow recover lost data from OST file. Visit official webpage and download the utility and then install.

Step-1: Load Corrupted OST Files: Users can add their corrupted, orphaned, or inaccessible OST files using the tool's file selection options. The software supports both ANSI and Unicode OST files, including large ones.



Step-2: Scanning Modes:

- **Quick Scan:** For recovering data from mildly corrupted OST files.
- **Advanced Scan:** For recovering severely damaged OST files or resolving complex corruption issues.

Add File

Add File Option

Select File Search File

Select File

OST File :

Search File

Search Selected Drive Search All Drive

<input type="checkbox"/>	File Name	File Path	File Size(MB)
<input type="checkbox"/>	menus.bak	C:\Program Files (x86)\Ad...	0
<input type="checkbox"/>	Administrator@mailexcha...	D:\ost file systools\Admini...	2
<input checked="" type="checkbox"/>	Administrator@mailexcha...	D:\ost file systools\Admini...	2
<input type="checkbox"/>	archive1.ost	D:\ost file systools\archiv...	75
<input type="checkbox"/>	ost.bak	D:\ost file systools\ost.bak	5

Decrypt Emails

Remove Encryption (Select if Emails are encrypted with SMIME or OpenPGP)

Scan Mode

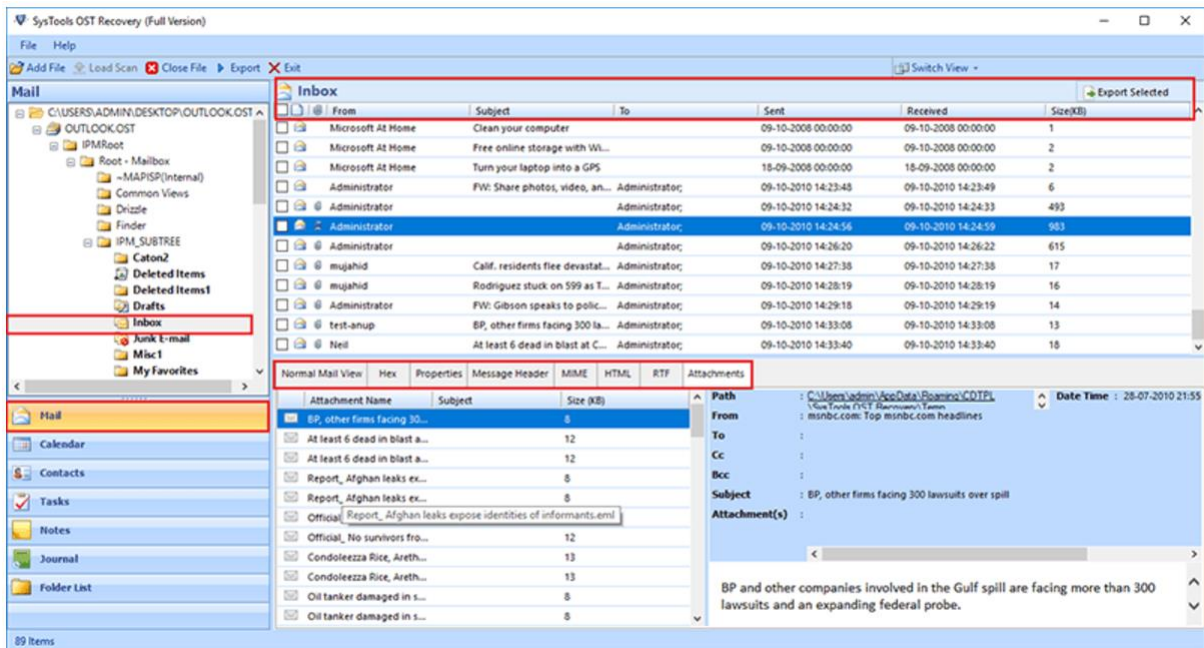
Quick Advance

Use this option if the file has minimum corruption.

App Folder Path ?

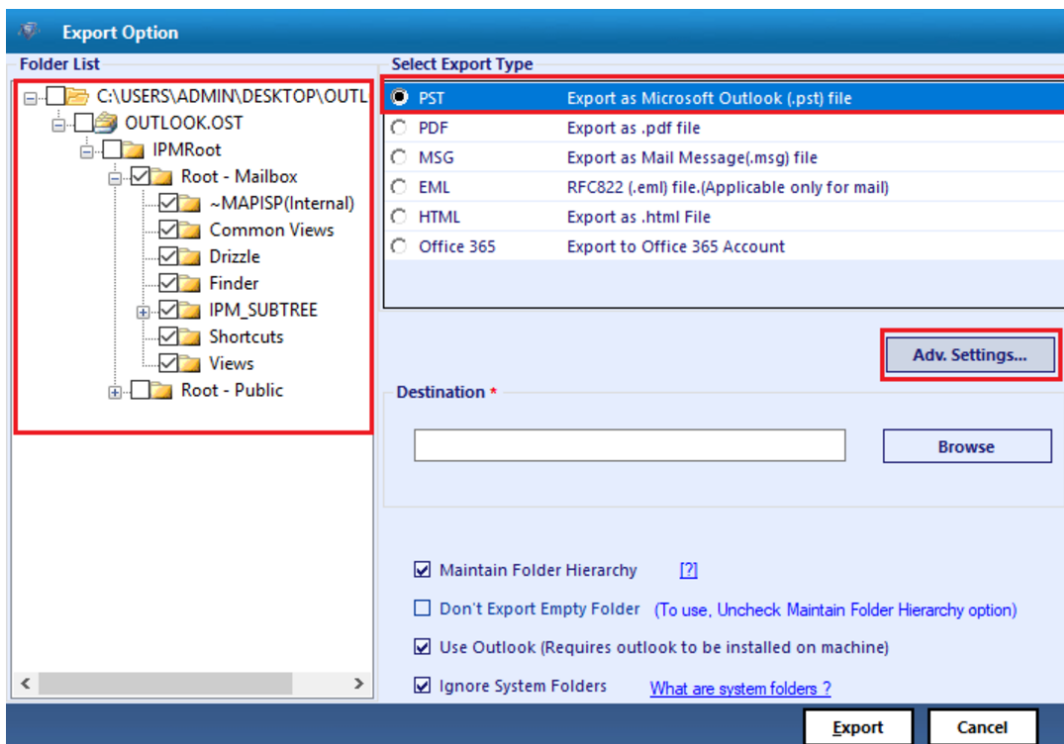
Storage Folder :

Step-3: Preview Recovered Data: After scanning, the tool generates a detailed preview of all recoverable data, including emails, attachments, calendars, contacts, tasks, and notes. Users can inspect the data and ensure its integrity before proceeding.



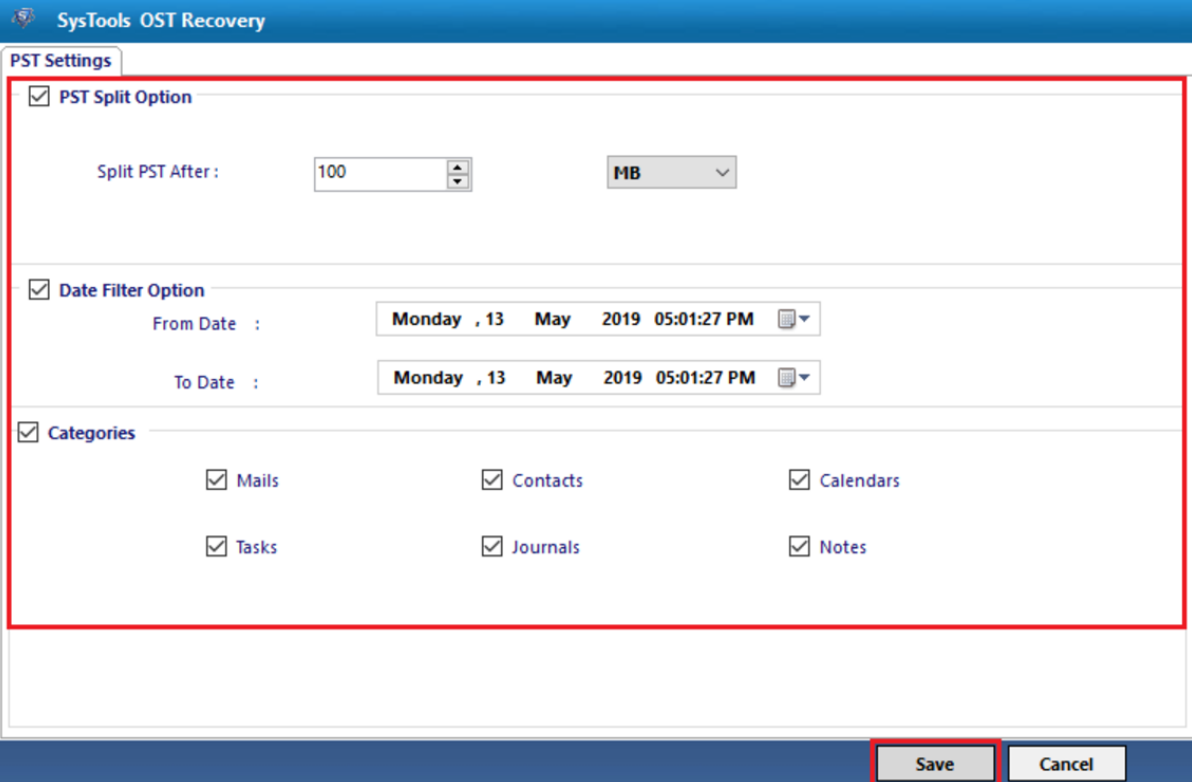
Step-4: Select Output Format: The tool provides flexibility in saving recovered data by offering multiple export options:

- **PST:** For direct import into Microsoft Outlook.
- **Other Formats:** EML, MSG, PDF, HTML, and MBOX for diverse use cases.



Step-5: Apply Recovery Filters: SysTools OST Recovery Tool offers advanced filtering options:

- **Date Range Filters:** Recover and export data from a specific time period.
- **Item Selection:** Choose specific folders or item types for recovery.

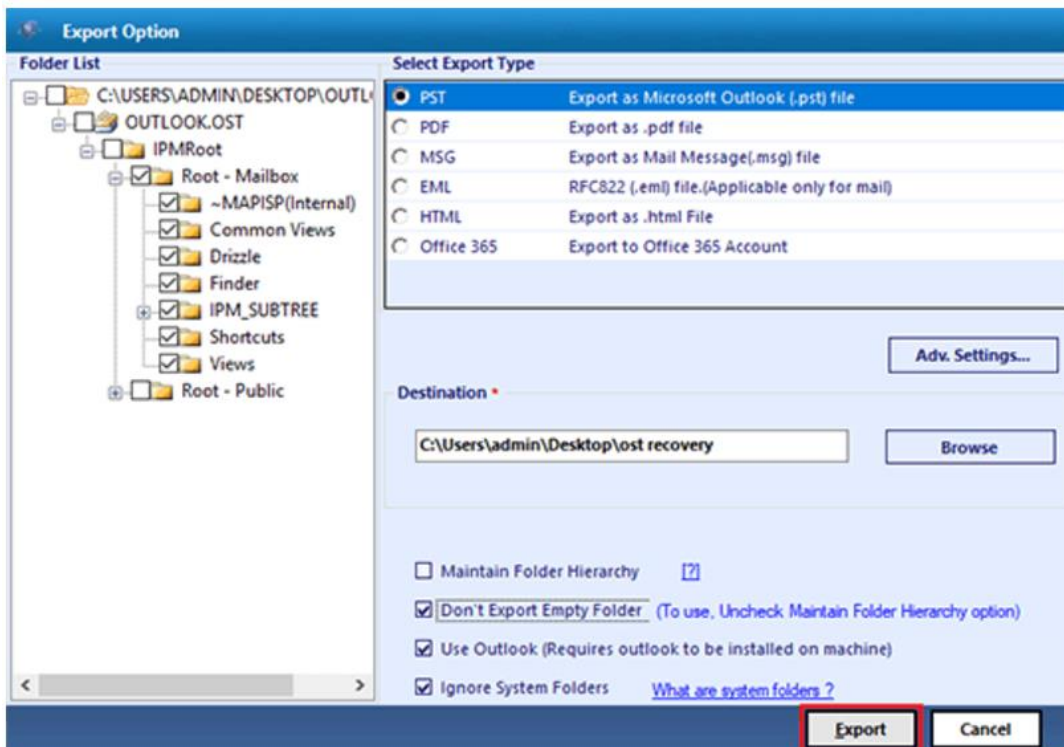


The screenshot shows the 'PST Settings' dialog box in the SysTools OST Recovery application. The dialog is titled 'PST Settings' and contains three main sections, each with a checked checkbox:

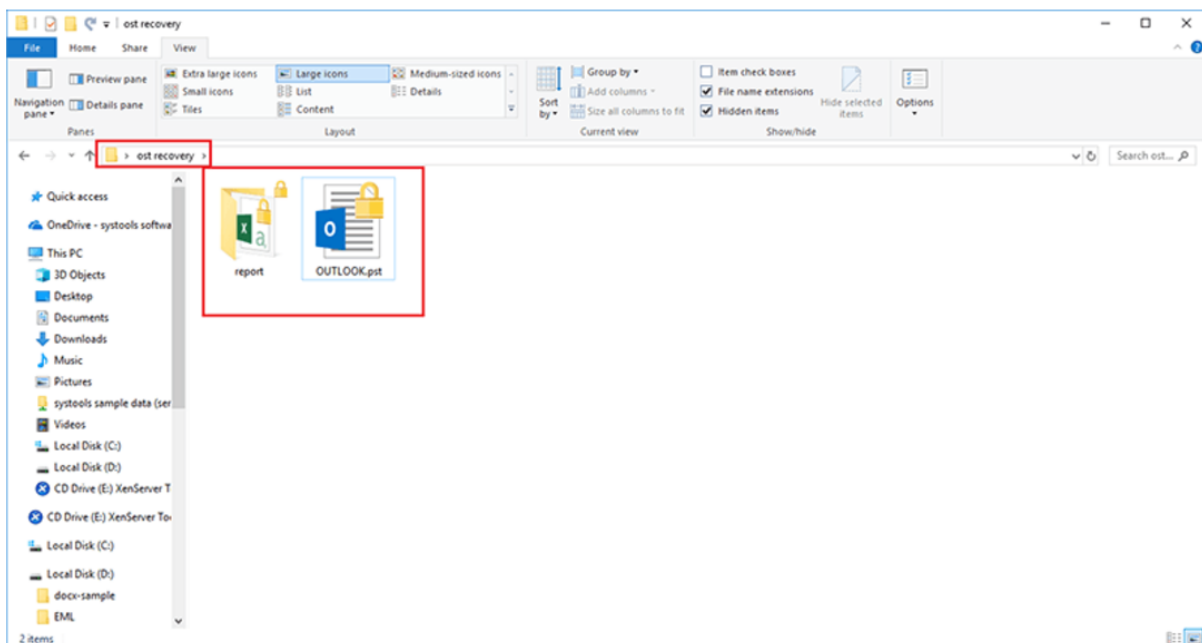
- PST Split Option:** Includes a 'Split PST After' field with a numeric input set to '100' and a unit dropdown menu set to 'MB'.
- Date Filter Option:** Includes 'From Date' and 'To Date' fields, both set to 'Monday , 13 May 2019 05:01:27 PM'.
- Categories:** A grid of checkboxes for selecting data types: Mails, Contacts, Calendars, Tasks, Journals, and Notes. All are checked.

At the bottom right of the dialog, there are 'Save' and 'Cancel' buttons. The 'Save' button is highlighted with a red border.

Step-6: Recover and Export Data: After configuring settings, the tool performs recovery and saves the restored data in the selected format. The process ensures no data is lost and preserves metadata and folder hierarchy.



Step-7: Detailed Export Report: Upon completion, the tool generates a comprehensive report detailing the recovery process, including the number of recovered items and their export location.



Final Points

- **Comprehensive OST Recovery:** Recover all mailbox items, including emails, calendars, contacts, and tasks, from corrupted or inaccessible OST files.
- **Advanced Scanning:** Quick and Advanced Scan modes handle all levels of corruption effectively.
- **Multiple Export Formats:** Save recovered data in PST, EML, MSG, PDF, HTML, or MBOX formats for versatile usage.
- **Selective Data Recovery:** Apply filters to recover specific items, folders, or data within a particular date range.
- **Folder Structure Retention:** The tool ensures the original folder hierarchy is preserved during the recovery process.
- **Support for Large OST Files:** Easily recover data from oversized and encrypted OST files.
- **User-Friendly Design:** Intuitive interface and step-by-step guidance make it suitable for users of all technical expertise.

SysTools OST Recovery Tool provides a reliable, efficient, and user-friendly way to recover and restore OST data, making it the preferred choice for professionals and organizations handling critical OST file issues.