

SysTools Outlook PST Recovery Software

MVPs Verified Software to Recover Permanently Deleted Data from Outlook Mailbox and Save in PST, EML, MSG, PDF, HTML, and Microsoft 365 Account Directly.

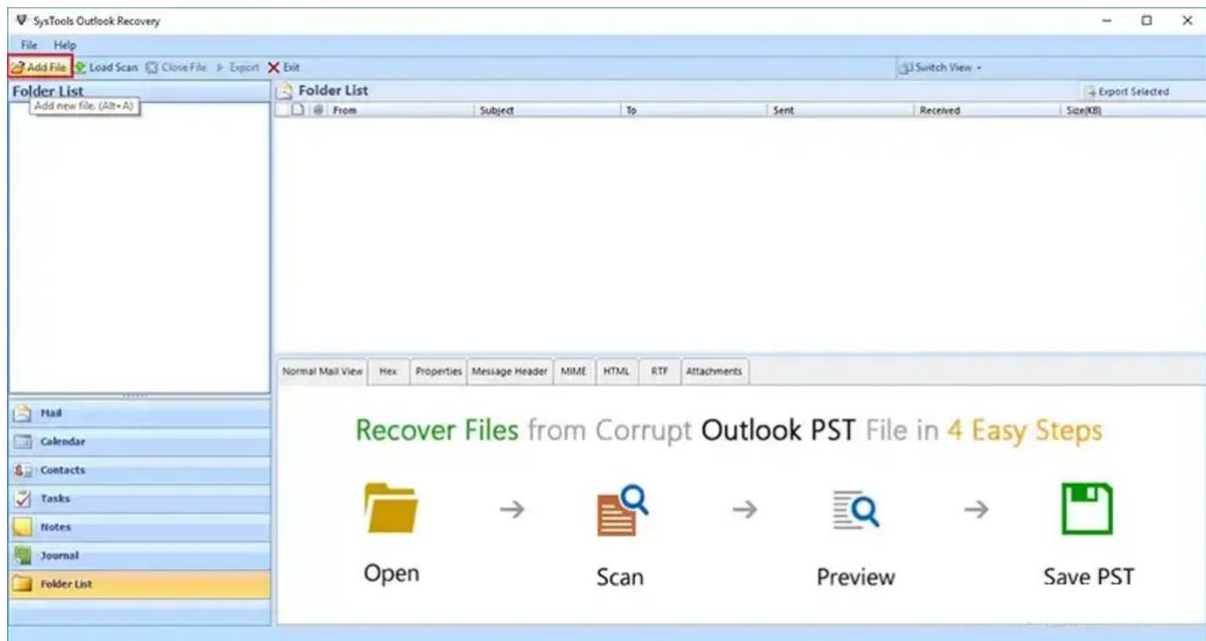
SysTools Outlook Recovery Tool is a robust solution designed to recover data from damaged, corrupted, or inaccessible PST files. It ensures the safe retrieval of emails, contacts, calendars, tasks, notes, and attachments from PST files without compromising data integrity. With advanced recovery modes and filtering options.

The [SysTools Outlook PST Recovery Tool](#) provides users with a seamless way to restore their Outlook data and save it in PST or other file formats like PST, EML, MSG, HTML, PDF, and Microsoft 365 account. Compatible with all versions of Microsoft Outlook and Windows OS, it's an ideal choice for businesses and individuals dealing with PST file corruption.

Steps to Recover Data from Outlook PST File Using SysTools Software

All the instructions are listed below, simply follow, and recover complete data from Outlook PST file. Visit official webpage and download the utility and then install.

Step-1: Load Corrupted PST Files: Users start by selecting the corrupted or damaged PST files. The tool supports large PST files and offers an option to handle both ANSI and Unicode PST formats.



Step-2: Scan and Analyze:

- **Quick Scan:** For minor corruption issues, ensuring faster processing.
- **Advanced Scan:** For severely corrupted PST files, ensuring thorough recovery of all data.

Add File

Add File Option

Select File Search File

Select File

PST File :

Search File

Search Selected Drive Search All Drive

File Name	File Path	File Size(MB)
-----------	-----------	---------------

Decrypt Emails

Remove Encryption (Select if Emails are encrypted with SMIME or OpenPGP)

Scan Mode

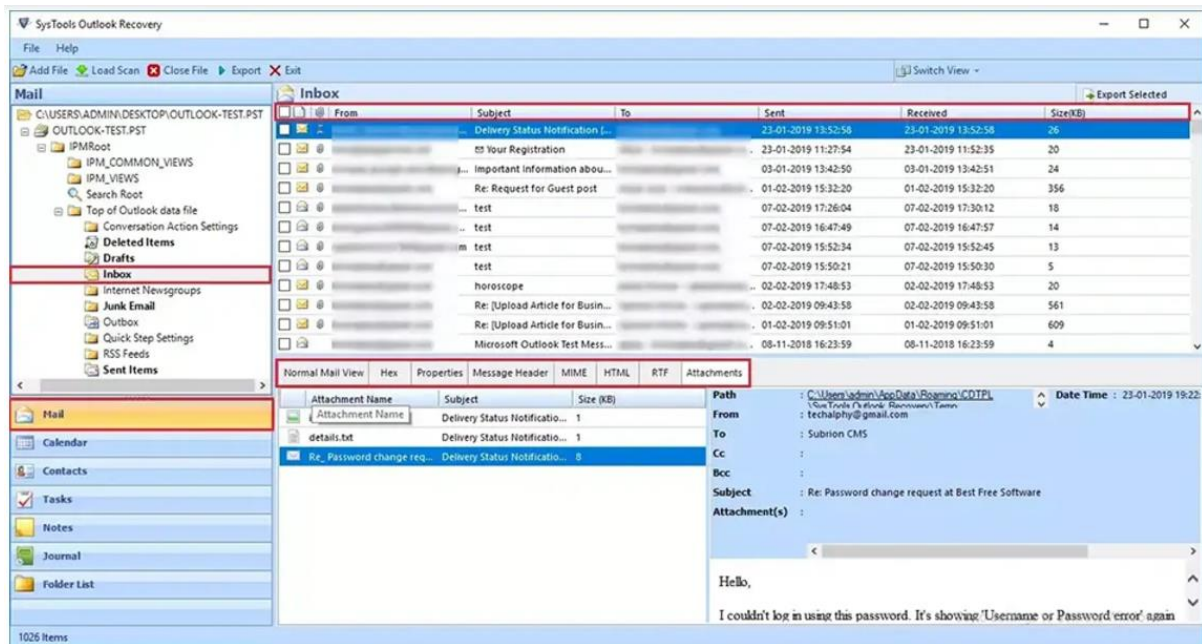
Quick Advance

Use this option if the file is highly corrupted.

App Folder Path ?

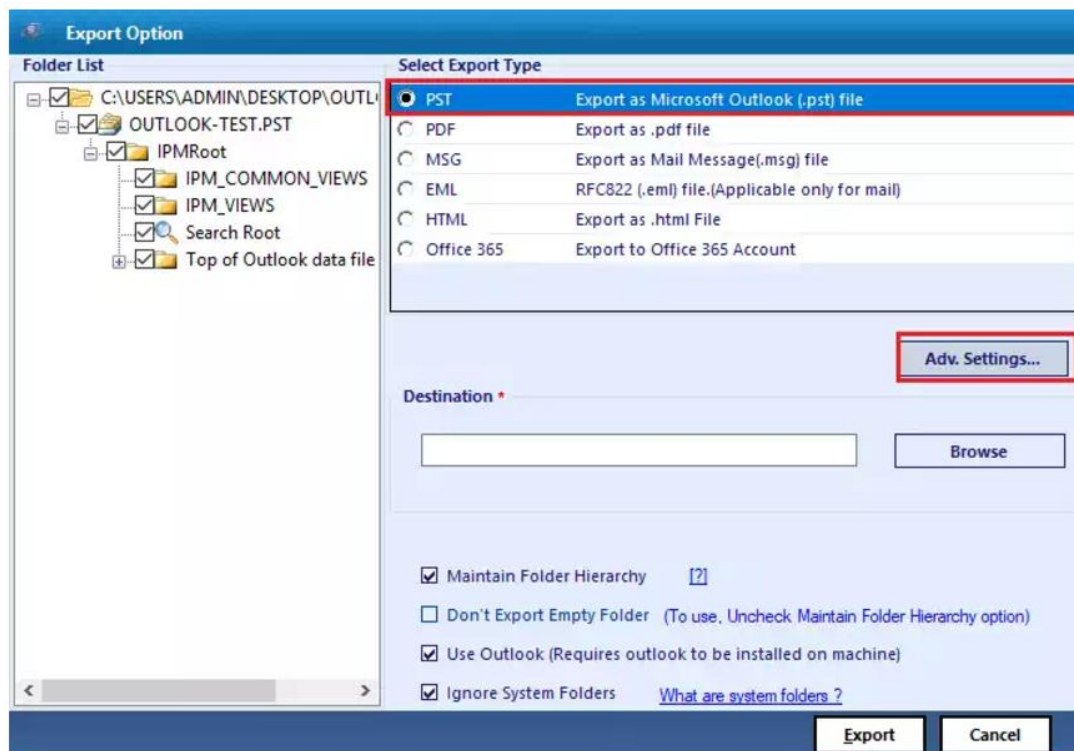
Storage Folder :

Step-3: Preview Recovered Data: Once the scanning is complete, the tool displays a detailed preview of all recoverable mailbox items, including emails, calendars, contacts, and more. Users can verify the integrity of the recovered data before saving.



Step-4: Select Output Format: The tool allows users to save the recovered data in multiple formats:

- **PST:** To restore data back into Microsoft Outlook.
- **Other Formats:** EML, MSG, HTML, PDF, and Microsoft 365 Account for flexible data usage and sharing.



Step-5: Apply Filters: The software provides advanced filtering options, allowing users to:

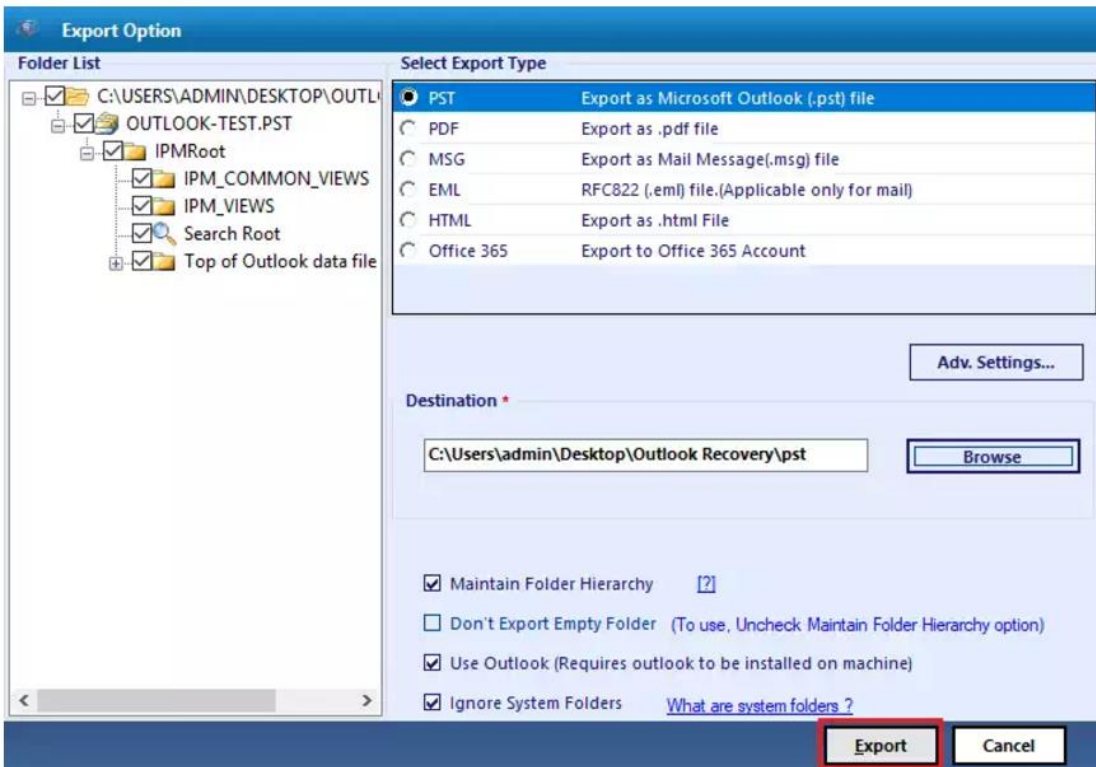
- Recover and save data from specific date ranges.
- Select specific folders or item types for recovery.

The screenshot shows the 'SysTools Outlook Recovery' application window with the 'PST Settings' dialog box open. The dialog box is titled 'PST Settings' and contains three main sections:

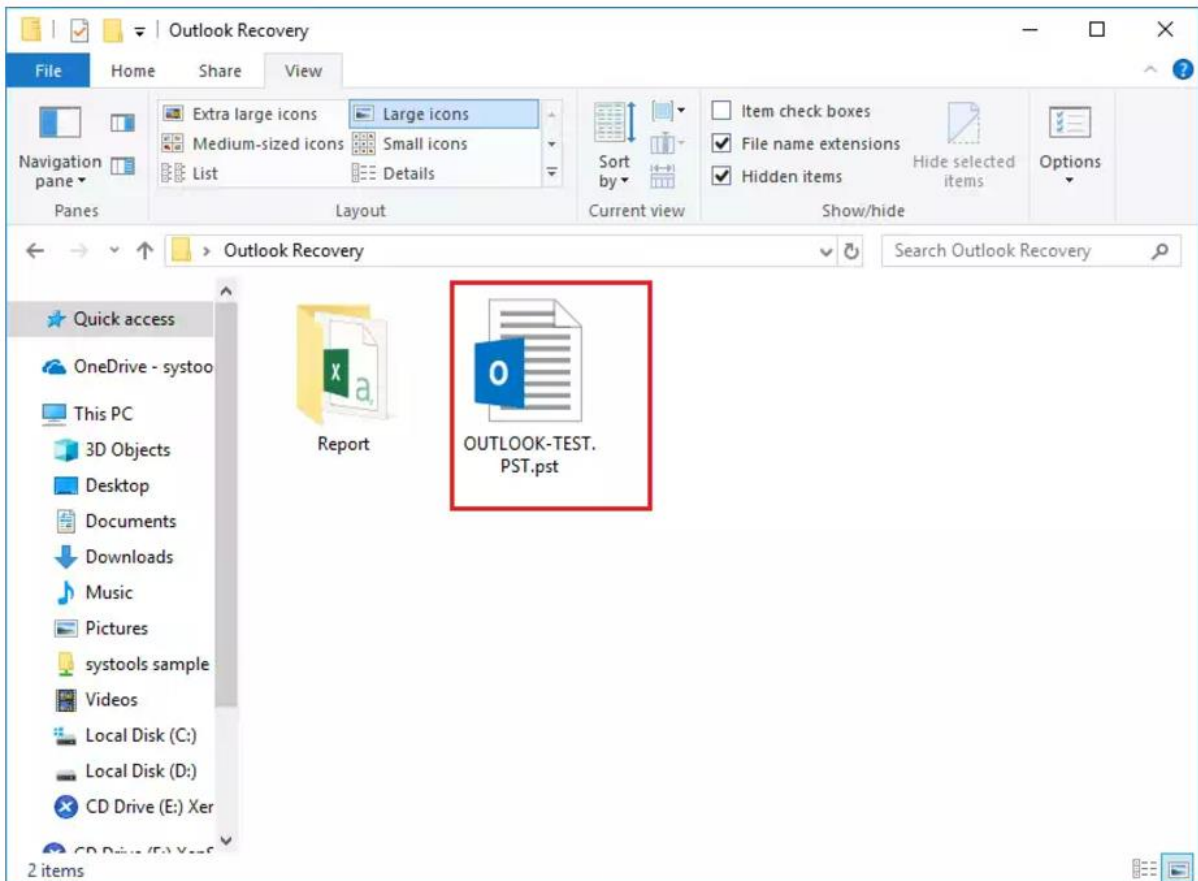
- PST Split Option:** A checked checkbox. Below it, 'Split PST After:' is set to '100' in a numeric spinner box, followed by a unit dropdown menu set to 'MB'.
- Date Filter Option:** A checked checkbox. Below it, 'From Date:' is set to 'Tuesday , 01 March 2016 04:00:38 PM' and 'To Date:' is set to 'Thursday , 13 September 2018 04:00:38 PM'. Both date fields have a calendar icon and a dropdown arrow.
- Categories:** A checked checkbox. Below it, there are six checkboxes for different Outlook categories: 'Mails', 'Contacts', 'Calendars', 'Tasks', 'Journals', and 'Notes'. 'Mails', 'Contacts', 'Calendars', 'Tasks', and 'Journals' are checked, while 'Notes' is unchecked.

At the bottom right of the dialog box, there are two buttons: 'Save' and 'Cancel'. The 'Save' button is highlighted with a red border.

Step-6: Save Recovered Data: After configuring the desired settings, the recovered data is exported to the selected format and location. The tool ensures complete preservation of metadata and folder hierarchy.



Step-7: Detailed Report Generation: The tool generates a comprehensive report summarizing the recovery process, including details of recovered items and their storage location.



Final Points

- **Comprehensive PST Recovery:** Recover emails, contacts, calendars, tasks, notes, and attachments from corrupted or damaged PST files.
- **Advanced Scanning Modes:** Quick and Advanced Scan options handle all levels of PST file corruption.
- **Multi-Format Support:** Export recovered data to PST, EML, MSG, HTML, or PDF for versatile usage.
- **Selective Recovery:** Apply date filters, folder selection, and item-specific options to recover only what's needed.
- **Folder Structure Retention:** Ensures the original folder hierarchy is preserved during the recovery process.
- **Compatible with Large PST Files:** Handles oversized and encrypted PST files without data loss.
- **User-Friendly Interface:** Designed for both technical and non-technical users, ensuring a smooth recovery experience.

SysTools Outlook PST Recovery Tool is a reliable, user-friendly, and efficient solution for restoring Outlook PST data, ensuring no data is lost during the recovery process. It's the ultimate choice for individuals and businesses managing corrupted PST files.

Note - MS Outlook is registered trademark of Microsoft Corporation.