

SysTools SQL Log Analyzer Software

Best Tool to Read & Analyze SQL Server Log File (.ldf) Transactions

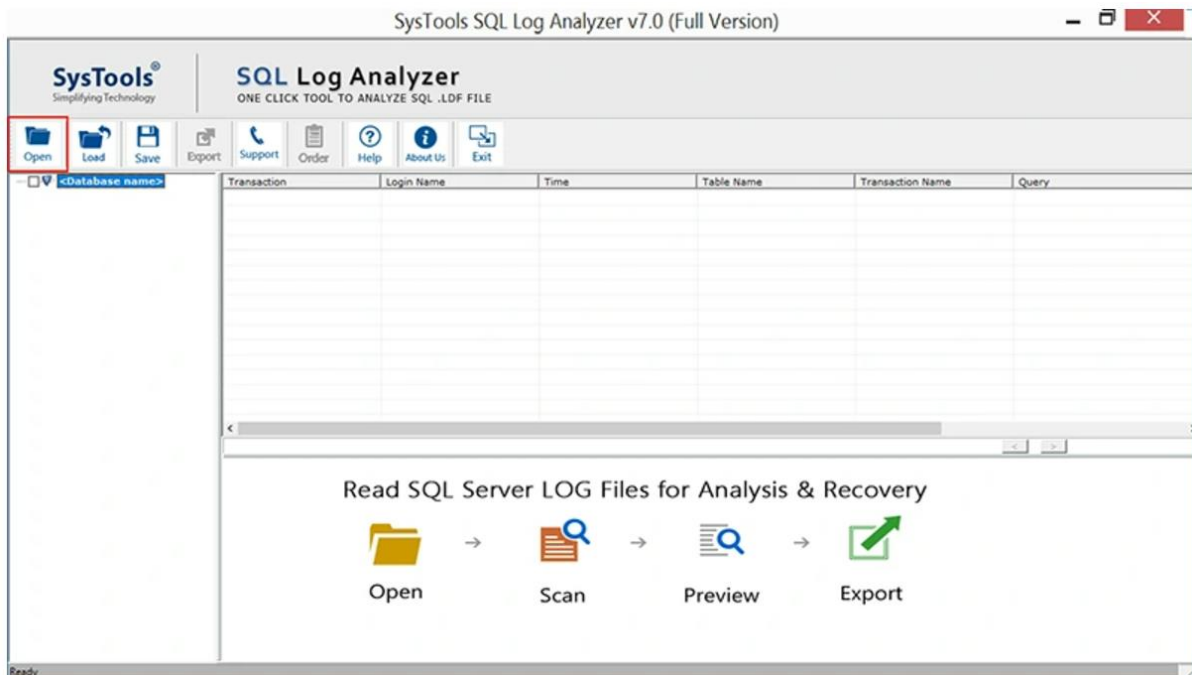
SysTools SQL Log Analyzer Tool is an advanced solution for analyzing SQL Server transaction log files (LDF). This tool enables users to view, analyze, and export transaction details, including INSERT, UPDATE, DELETE, and other operations performed on a SQL Server database. Designed for database administrators, forensic experts, and IT professionals, the tool ensures precise analysis of SQL Server activities, aiding in auditing and troubleshooting. It supports SQL Server LDF and associated MDF files from all major SQL Server versions, providing flexibility and efficiency in database log analysis.

Note: Visit Official Page of [SysTools SQL Log Analyzer Software](#)

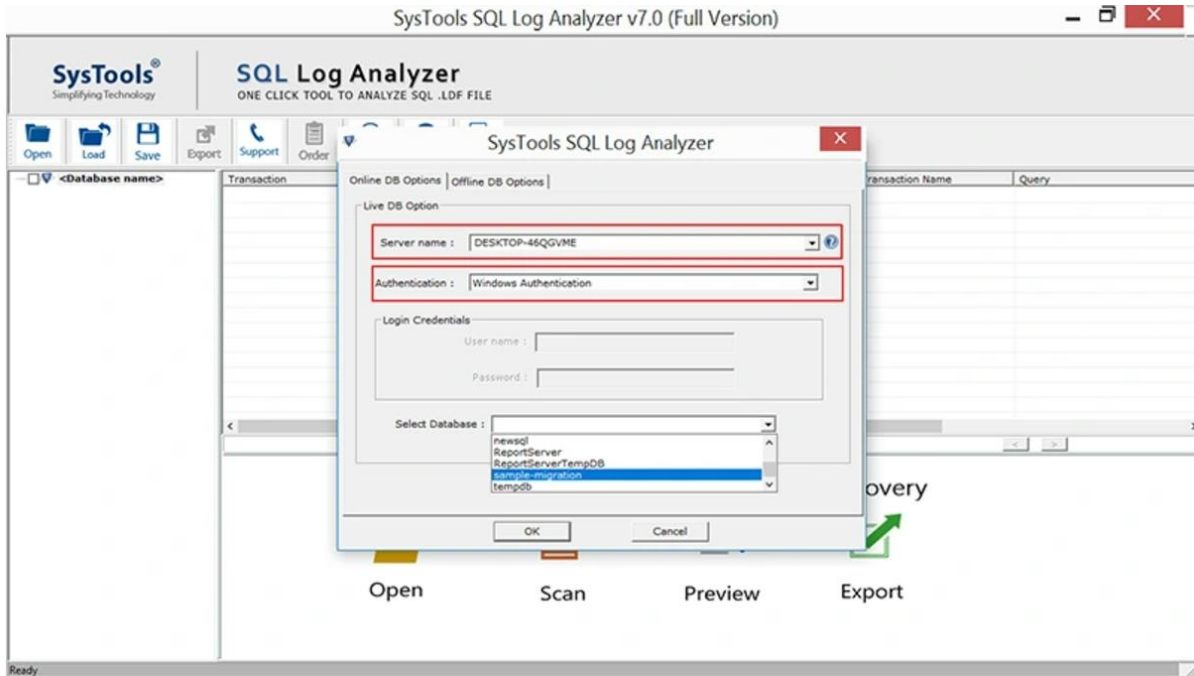
Steps to Understand Transaction Log File of SQL Server Database

All the instructions are listed below, simply follow, and analyze SQL server database file log entries. Visit official webpage and download the utility and then install.

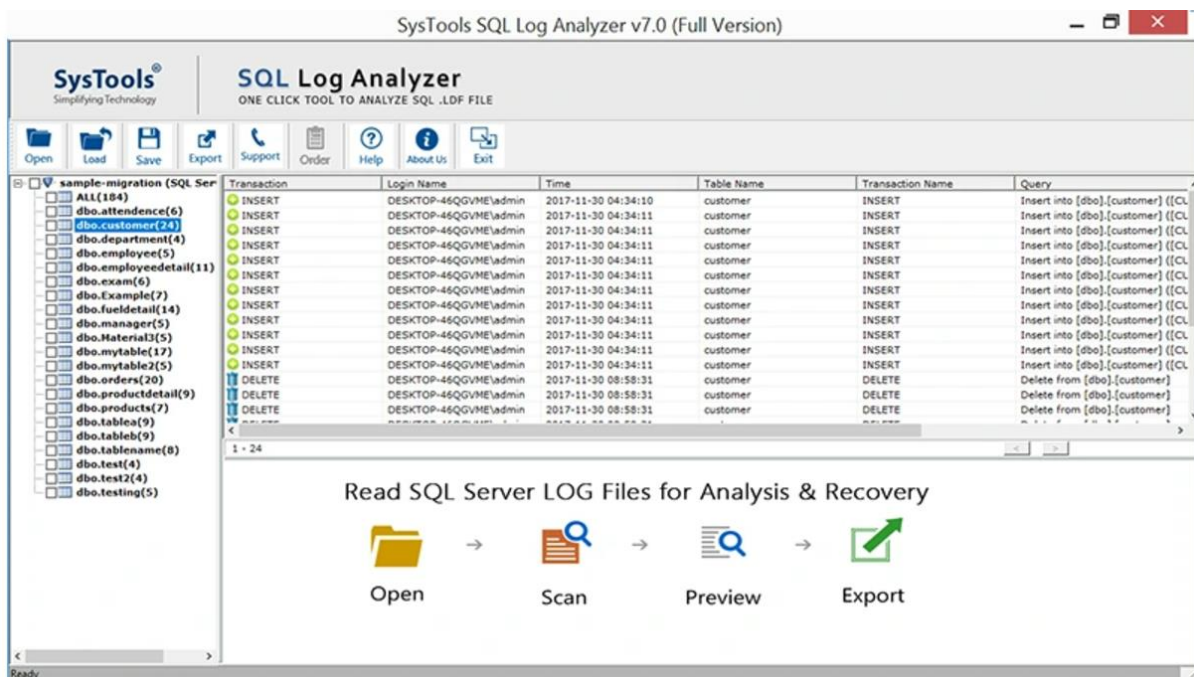
Step-1: Open & launch the SQL Log Analyzer tool. Click on **Open** to add .ldf /.mdf file to the application.



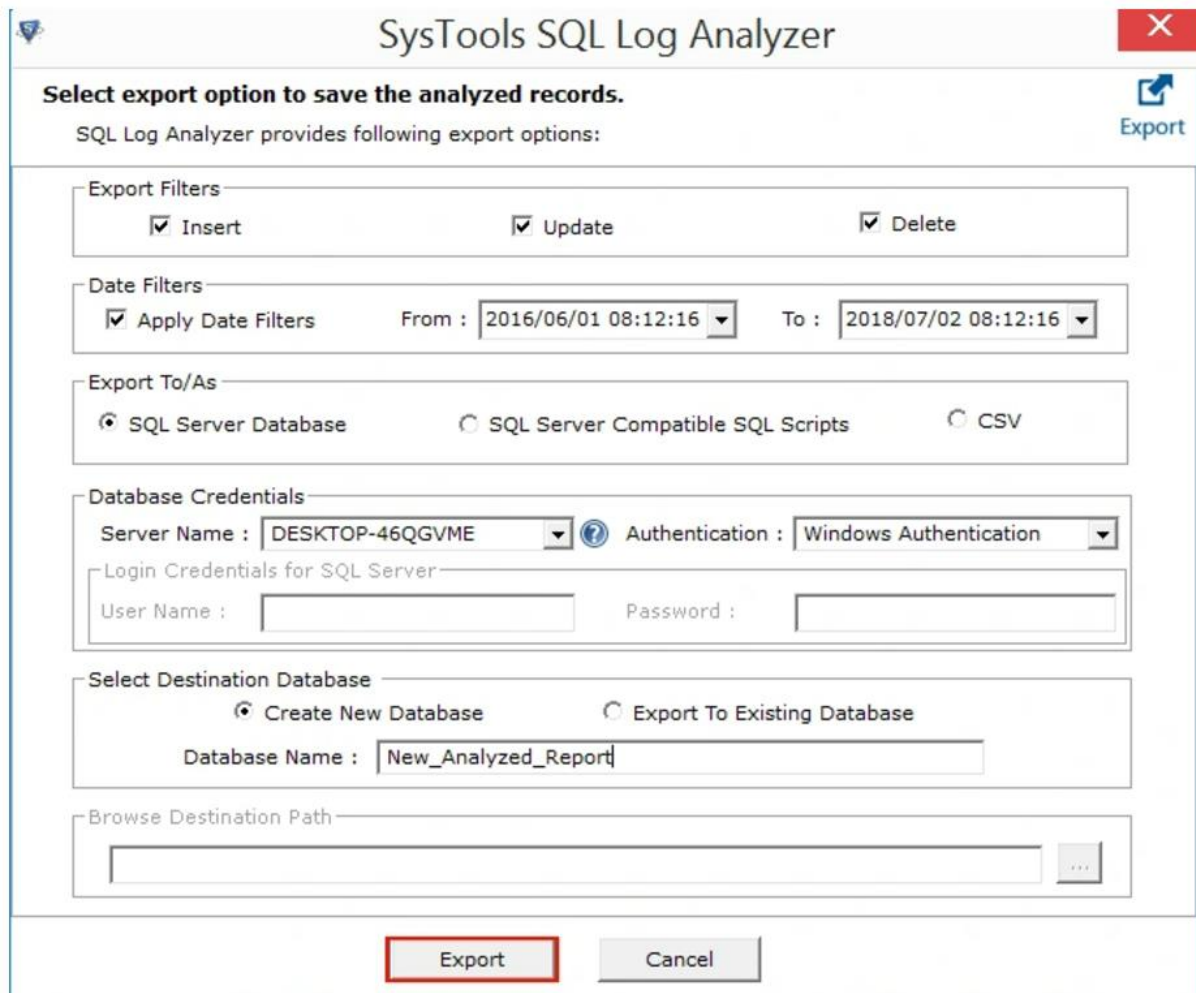
Step-2: If user select Online DB Option, Software allows you to select the Server Name from available list. If the Server Name not available in the list, then, you can enter it manually. Afterward, choose Authentication and click on Select Database option drop down arrow to opt for desired database.



Step-3: You can view the complete scanning details such as; **No. of Records, No. of Inserts, No. of Updates, & No. of Deletes**. Click OK to proceed. You can preview data of each table by selecting it from left-side panel.



Step-4: Check the transaction record type checkbox that you want to export: **INSERT, UPDATE, and DELETE**. Check the **Date Filter** option to export transaction records of a selected date range. Click on **Export** to begin the export procedure.

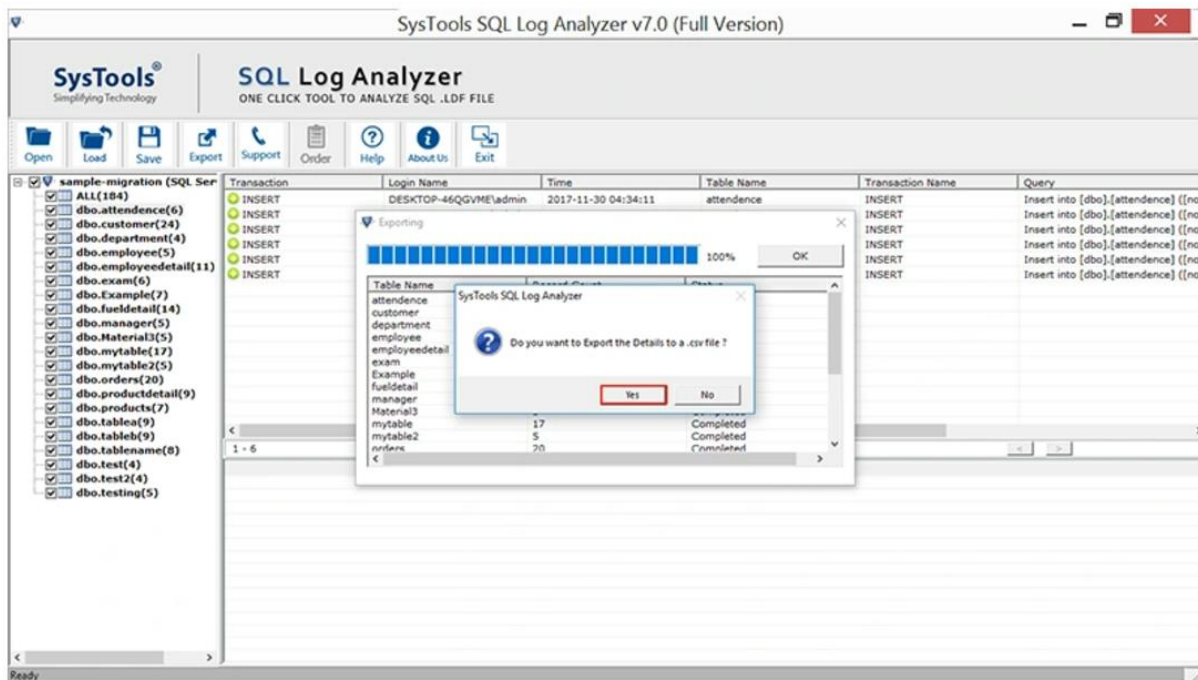


The screenshot shows the 'SysTools SQL Log Analyzer' dialog box with the title 'Select export option to save the analyzed records.' The dialog is divided into several sections:

- Export Filters:** Three checkboxes are checked: 'Insert', 'Update', and 'Delete'.
- Date Filters:** The 'Apply Date Filters' checkbox is checked. The 'From' date is '2016/06/01 08:12:16' and the 'To' date is '2018/07/02 08:12:16'.
- Export To/As:** Three radio buttons are present: 'SQL Server Database' (selected), 'SQL Server Compatible SQL Scripts', and 'CSV'.
- Database Credentials:** 'Server Name' is 'DESKTOP-46QGVME' and 'Authentication' is 'Windows Authentication'. Below this, there are empty text boxes for 'User Name' and 'Password'.
- Select Destination Database:** Two radio buttons are present: 'Create New Database' (selected) and 'Export To Existing Database'. Below this, the 'Database Name' is 'New_Analyzed_Report'.
- Browse Destination Path:** An empty text box with a browse button (three dots) to its right.

At the bottom of the dialog, there are two buttons: 'Export' (highlighted with a red border) and 'Cancel'.

Step-5: A prompt up window will open that will ask - Do you want to **Export the Details to a .csv file?** Click **Yes** if you want.



Final Points

- **Detailed SQL Log Analysis:** Provides insights into all transactions, including INSERT, UPDATE, and DELETE operations.
- **Transaction Visibility:** Displays before-and-after data for precise auditing.
- **Deleted Record Analysis:** Enables recovery and inspection of deleted data from transaction logs.
- **Export Options:** Save analyzed data to live SQL Server, SQL scripts, or CSV formats.
- **Filter Transactions:** Search and filter transactions based on date, time, operation type, or affected tables.
- **Supports Live and Offline Databases:** Works with both live SQL Server instances and offline database files.
- **Wide Compatibility:** Supports all major SQL Server versions, including SQL Server 2019 and below.
- **User-Friendly Interface:** Simplifies log analysis for forensic experts and database administrators.
- **Windows Support:** Compatible with Windows 11 and earlier versions.

SysTools SQL Log Analyzer Tool is an essential solution for analyzing and auditing SQL Server transaction logs, providing actionable insights and comprehensive database activity tracking.