

SysTools SQL Recovery Software

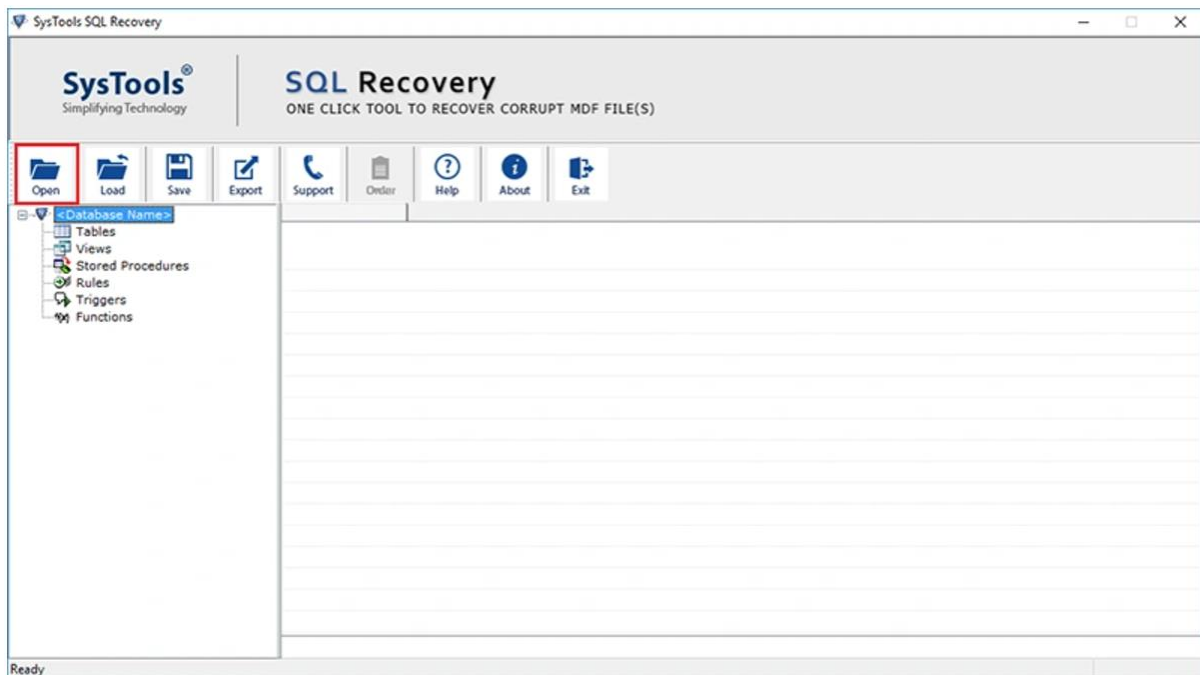
MVPs Verified and Recommended Tool to Recover Deleted Data from SQL Database File

SysTools SQL Recovery Software is an advanced tool designed to recover and repair corrupted SQL database files (MDF and NDF). The software efficiently restores tables, triggers, functions, stored procedures, keys, rules, and other database objects from damaged SQL Server databases. It supports recovery from all versions of SQL Server and ensures minimal data loss, making it an essential tool for database administrators and IT professionals. With its intuitive interface and robust functionality, [SysTools SQL Recovery Software](#) guarantees seamless recovery of critical database files.

Steps to Recover Deleted Data from SQL Server Database from SysTools Software

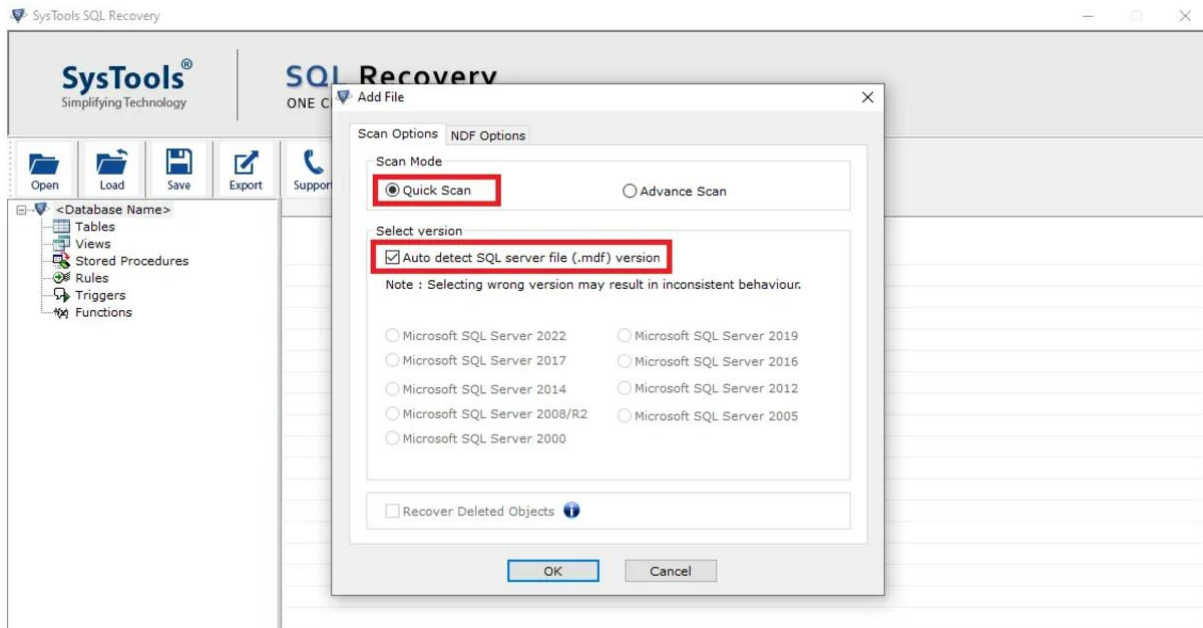
All the instructions are listed below, simply follow, and recover deleted data from SQL server database. Visit official webpage and download the utility and then install.

Step-1: Add Corrupt SQL Database Files: Users can add corrupted MDF and NDF files for recovery. The tool supports both primary and secondary database files.

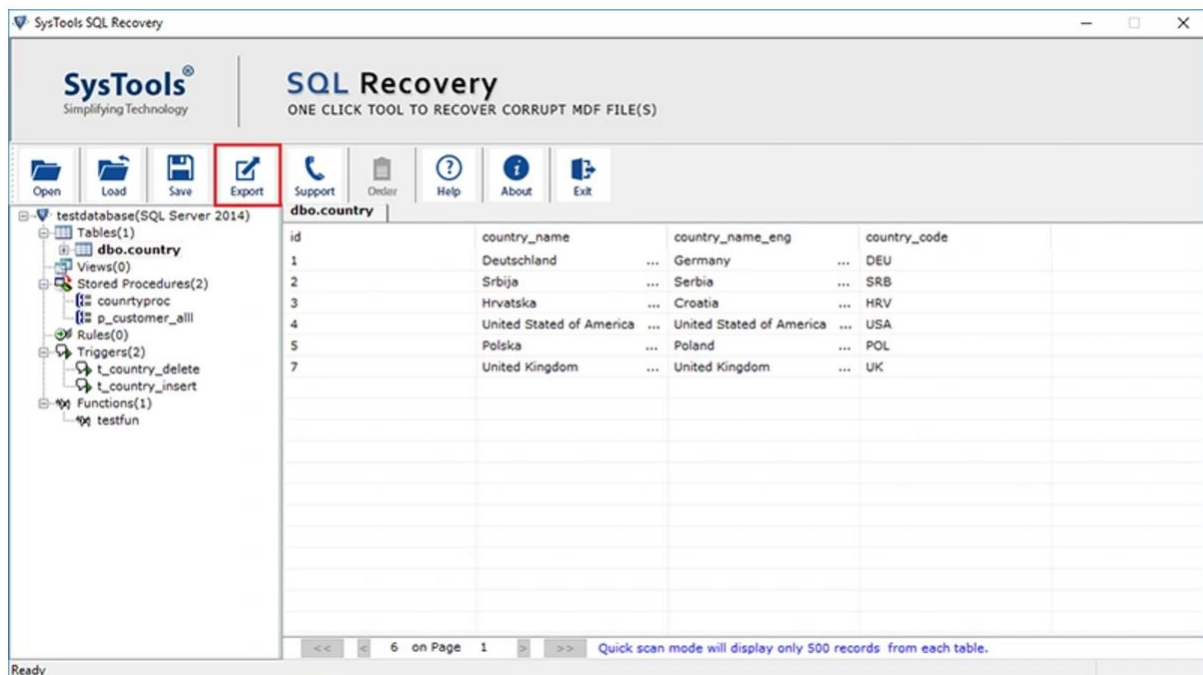


Step-2: Choose Scanning Mode:

- **Quick Scan:** For recovering minor corruption in SQL database files.
- **Advanced Scan:** For repairing severely damaged MDF and NDF files.



Step-3: Preview Recoverable Items: The software displays a preview of all recoverable database objects, such as tables, stored procedures, views, indexes, and triggers. Users can verify data integrity before saving.



Step-4: Export Options: The recovered database can be exported directly to.

- A live SQL Server database.
- A script file for manual restoration.
- CSV format for offline analysis.

Export Options

Export To/As

SQL Server Database SQL Server Compatible SQL Scripts CSV File Format

Database Authentication

Server Name : Authentication : Windows Authentication

Login Credentials for SQL Server

User Name : Password :

Select Destination Database

Create New Database Export To Existing Database

Database Name :

Collation Settings

Collation :

Export

With only schema
(This option will only create schema for the selected tables/views/ procedures)

With Schema & Data
(This option will export schema as well data for the table)

Export Deleted Objects Export Deleted Records

Export Cancel

RKLCRPS(SQL Server 2005)

TABLES

- dbo.AMOAuto
- dbo.CashGroupMaster
- dbo.CashGroupMaster1
- dbo.CashMaster
- dbo.CashMaster1
- dbo.CashTrMaster
- dbo.CashTrMaster1
- dbo.CashTrTemp
- dbo.CashTrTemp1
- dbo.COLMASTER
- dbo.COM_VOUCHER
- dbo.COM_VOUCHER_TEMP

Step-5: Support for SQL Objects: The tool ensures recovery of all database components, including.

- Tables and their associated data.
- Triggers, keys, and indexes.
- Views, stored procedures, and functions.

Export Options

Export To/As

SQL Server Database SQL Server Compatible SQL Scripts CSV File Format

Database Authentication

Server Name : (local) Authentication : Windows Authentication

Login Credentials for SQL Server

User Name : Password :

Select Destination Database

Create New Database Export To Existing Database

Database Name : test_database

Collation Settings

Collation : SQL_Latin1_General_CP1_CI_AS

testdatabase(SQL Server 2014)

- TABLES
 - dbo.country
- VIEWS
- STORED PROCEDURE
 - countyproc
 - p_customer_all
- RULES
- TRIGGERS
- FUNCTIONS
 - testfun

Export

With only schema
(This option will only create schema for the selected tables/views/ procedures)

With Schema & Data
(This option will export schema as well data for the table)

Export Deleted Objects Export Deleted Records

Export Cancel

Step-6: Collation Support: Maintains the original collation settings of the database during recovery, ensuring consistency in multilingual environments.

Export Options

Export To/As
 SQL Server Database SQL Server Compatible SQL Scripts CSV File Format

Database Authentication
Server Name : (local) Authentication : Windows Authentication

Login Credentials for SQL Server
User Name : Password :

Select Destination Database
 Create New Database Export To Existing Database
Database Name : test_database

Collation Settings
Collation : SQL_Latin1_General_CP1_CI_AS

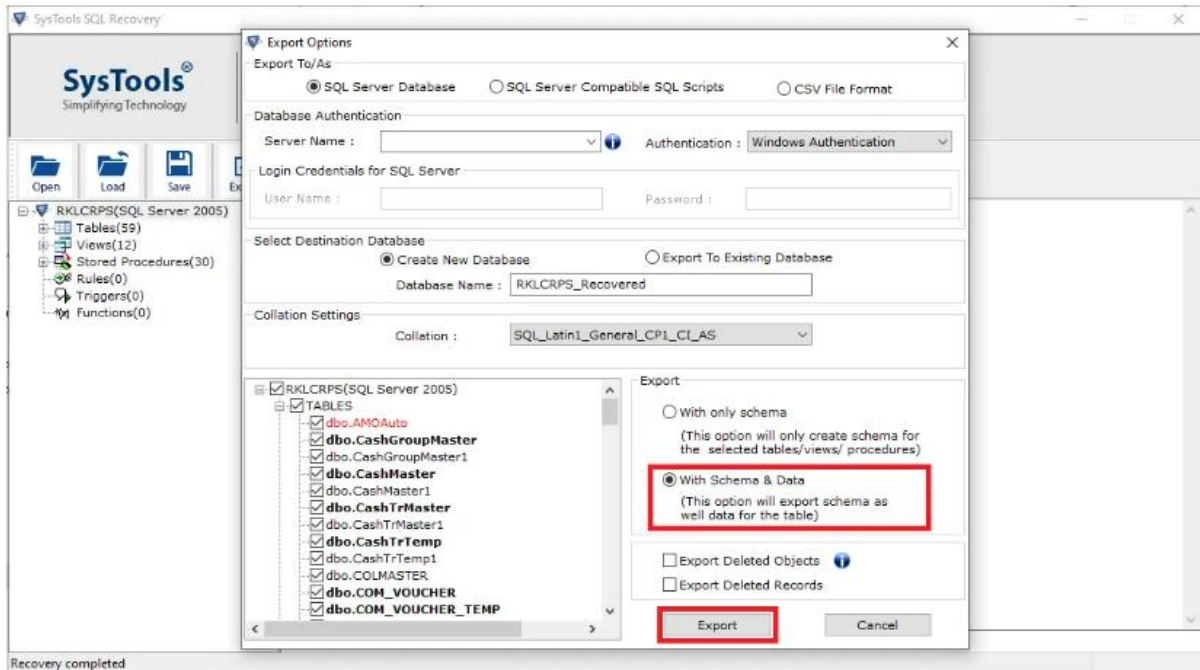
testdatabase(SQL Server 2014)
 TABLES
 dbo.country
 VIEWS
 STORED PROCEDURE
 countyproc
 p_customer_all
 RULES
 TRIGGERS
 FUNCTIONS
 testfun

Export
 With only schema
(This option will only create schema for the selected tables/views/ procedures)
 With Schema & Data
(This option will export schema as well data for the table)

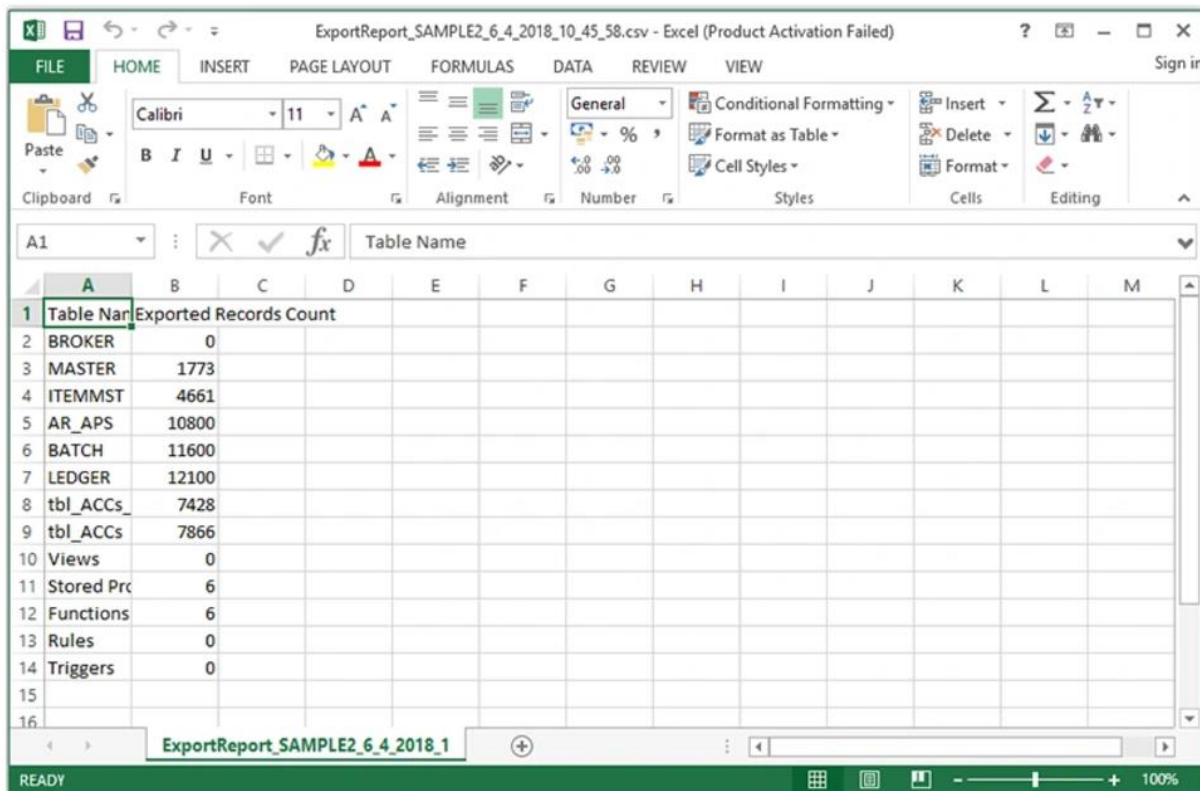
Export Deleted Objects Export Deleted Records

Export Cancel

Step-7: Handle Deleted Records: Users can recover deleted records from the database with the option to save them separately.



Step-8: Save and Load Scans: The software allows saving the scan results for resuming the recovery process later without rescanning the database.



Final Points

- **Comprehensive SQL Recovery:** Repairs both MDF (primary) and NDF (secondary) files from corrupted databases.
- **Dual Scanning Modes:** Quick Scan for minimal corruption and Advanced Scan for severe database damage.
- **Pre-Recovery Preview:** Verify recoverable database objects before export.
- **Flexible Export Options:** Export data to live SQL Server, script files, or CSV format.
- **Recovers All Database Objects:** Ensures recovery of tables, triggers, keys, stored procedures, views, and more.
- **Deleted Record Recovery:** Retrieves deleted records and provides options for saving them separately.
- **Collation Support:** Retains original collation settings for multilingual databases.
- **Wide Compatibility:** Supports SQL Server 2019 and earlier versions.
- **User-Friendly Interface:** Designed for database administrators and IT professionals with minimal technical expertise.
- **Windows Support:** Fully functional on Windows 11 and earlier versions.

SysTools SQL Recovery Software is a trusted and robust solution for repairing SQL Server database files, ensuring accurate recovery of critical data while maintaining its original integrity.