

# SysTools SQL Server Migrator Tool

Experts verified SQL Server Data Migration Tool is a reliable software that helps users to migrate records & schemas from all the objects of an SQL Server to another.

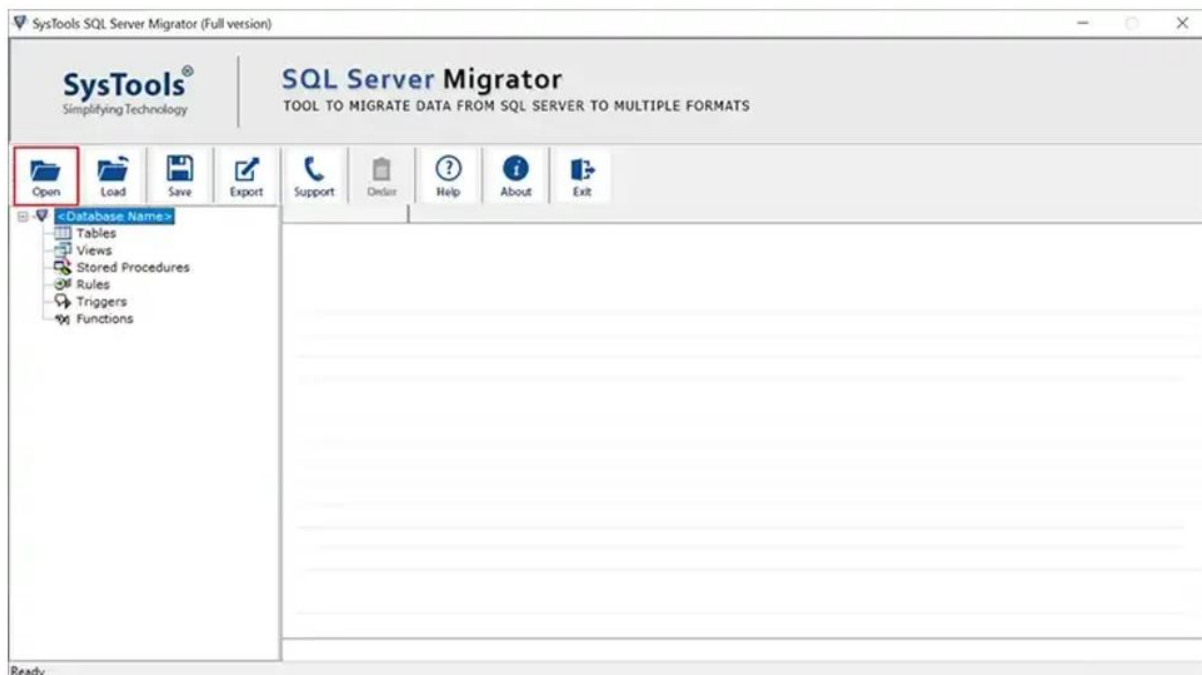
SysTools SQL Server Migrator Tool is an advanced solution designed to migrate SQL Server databases seamlessly between different servers or instances. It supports migration across **SQL Server Database and SQL Server Script**, enabling users to transfer schemas, tables, stored procedures, triggers, and more with precision. This tool is ideal for database administrators and IT professionals aiming to upgrade SQL Server versions, consolidate databases, or migrate to cloud-based servers with minimal downtime.

**Note:** Visit Official Webpage of [SysTools SQL Server Migration Tool](#)

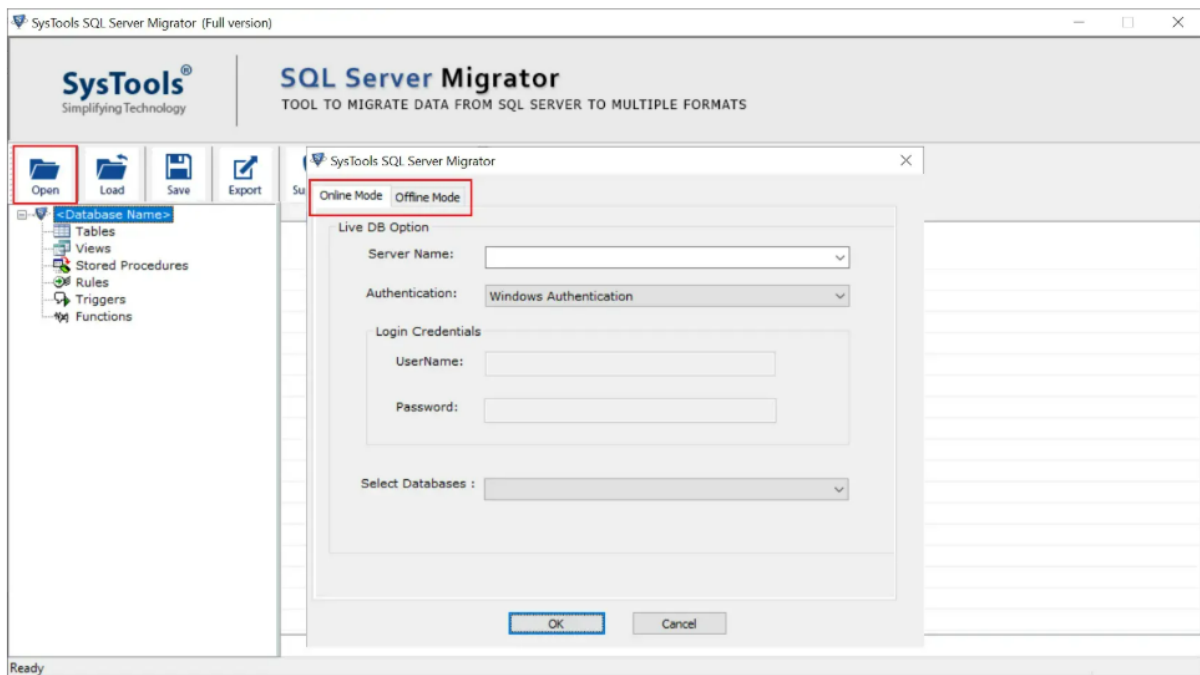
## Steps to Migrate SQL Server Database Using SysTools Software

All the instructions are listed below, simply follow, and migrate SQL server database. Visit official webpage and download the utility and then install.

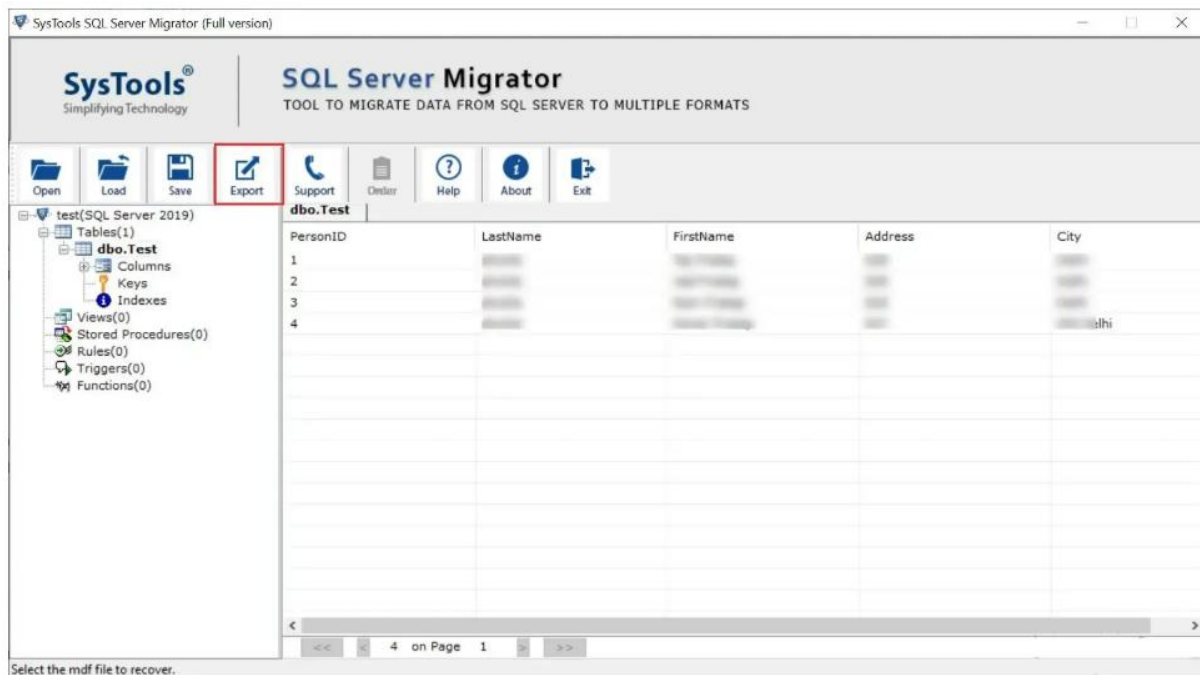
**Step-1:** Download & Install SysTools SQL Server Migrator Tool. Next, Click on **Open** Button to Add SQL Server Database.



**Step-2:** Software Provide Two Mode to Browse SQL Server Database: **Online & Offline.**



**Step-3:** Now, Preview SQL Server Database Table, View, Procedure, Rules in Details. Next, Click on **Export** Button to Start Migration Process.



Select the mdf file to recover.

**Step-4:** Software Provides Two Migration Option: **SQL Server Database & SQL Server Scripts.**

Export Options

Export To/As

SQL Server Database  SQL Server Compatible SQL Scripts

Database Authentication

Server Name :  Authentication : Windows Authentication

Login Credentials for SQL Server

User Name :  Password :

Select Destination Database

Create New Database  Export To Existing Database

Database Name : test\_Recovered

Collation Settings

Collation : <DEFAULT>

Collation was not found. User can select the Collation. Otherwise Server's default Collation will get applied.

test(SQL Server 2019)

- TABLES
  - dbo.Test
- VIEWS
- STORED PROCEDURE
- RULES
- TRIGGERS
- FUNCTIONS

Export

With only schema  
(This option will only create schema for the selected tables/views/ procedures)

With Schema & Data  
(This option will export schema as well data for the table)

Export Deleted Objects  Export Deleted Records

Export Cancel

**Step-5:** Select **Server Name with Authentication.** Select Destination Database: **Create New Database or Export to Existing Database.** Next Select Collation Settings (if required) and Select Required **SQL Server Database Objects** for Migration. Next, Select Export Option: **With only Schema or With Schema & Data.** At last, hit the **Export** button.

**Export Options**

Export To/As

SQL Server Database       SQL Server Compatible SQL Scripts

Database Authentication

Server Name : THINK\SQLEXPRESS      Authentication : Windows Authentication

Login Credentials for SQL Server

User Name :      Password :

Select Destination Database

Create New Database       Export To Existing Database

Database Name : test\_Recovered

Collation Settings

Collation : <DEFAULT>

Collation was not found. User can select the Collation. Otherwise Server's default Collation will get applied.

test(SQL Server 2019)

- TABLES
  - dbo.Test
- VIEWS
- STORED PROCEDURE
- RULES
- TRIGGERS
- FUNCTIONS

Export

With only schema  
(This option will only create schema for the selected tables/views/ procedures)

With Schema & Data  
(This option will export schema as well data for the table)

Export Deleted Objects       Export Deleted Records

**Export**      Cancel

**Step-6: Export Completed** Pop-up Will Generate, Click on **OK**.

**Exporting**

100%      Close

Table Name	Record Count	Status
Test	4	Completed

SysTools SQL Server Migrator      X

**i** Export completed

**OK**

## Final Points

- **Live SQL Server Migration:** Transfer data and schemas between live SQL Server instances.
- **Cross-Version Support:** Migrate between different versions of SQL Server without compatibility issues.
- **Comprehensive Object Migration:** Includes tables, schemas, stored procedures, views, triggers, and more.
- **Selective Migration:** Choose specific databases or objects for precise control.
- **Data Integrity Ensured:** Maintains structure, relationships, and consistency during migration.
- **Advanced Filters:** Migrate only necessary data with filtering options.
- **Detailed Logs:** Provides a transparent view of the migration process.
- **Secure Transfers:** Uses encrypted connections for safe data migration.
- **User-Friendly:** Simplified interface suitable for all levels of users.

SysTools SQL Server Migrator Tool offers a reliable and efficient way to migrate SQL Server databases across environments, ensuring minimal downtime and maximum accuracy. Whether for upgrading, consolidating, or transitioning to cloud servers, this tool streamlines the process for professionals and enterprises alike.