

# SysTools Thunderbird Import Wizard

Robust Software to Import MBOX to Thunderbird Email Application with Entire Data

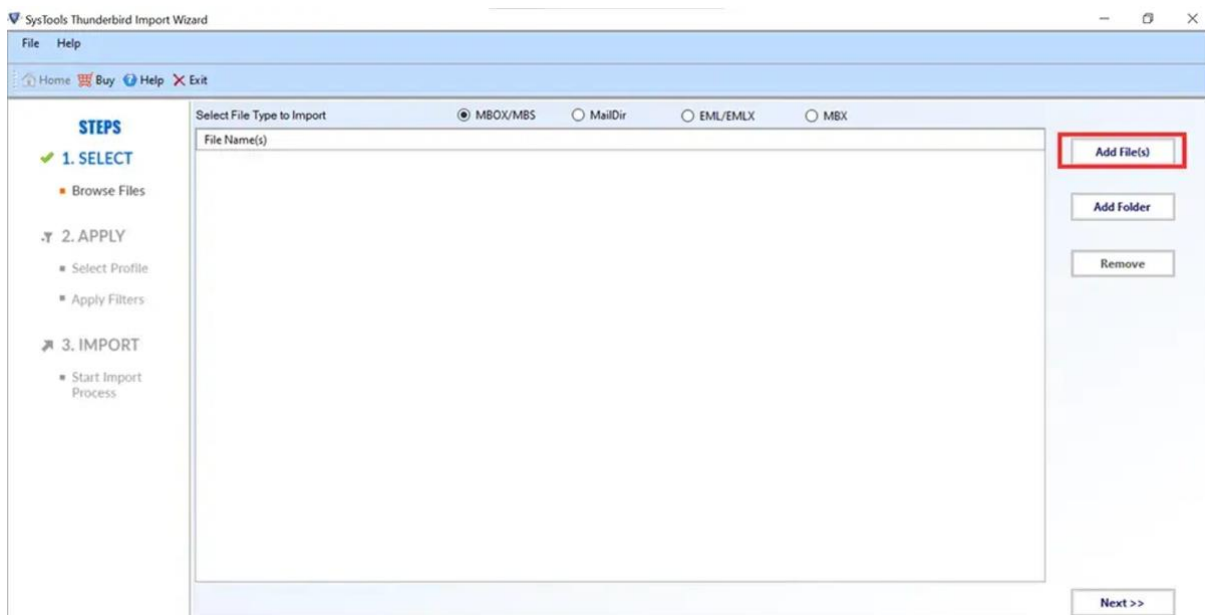
SysTools Thunderbird Import Wizard is a professional-grade tool designed to import **MBOX, MBX, EML, EMLX, Maildir**, and other email files directly into Mozilla Thunderbird. The software ensures efficient migration of email data while preserving folder hierarchy and metadata. It simplifies the process of transferring emails, attachments, and complete Thunderbird profiles to another system or importing data into Thunderbird-configured profiles or local folders.

**Note:** Visit Official Webpage of [SysTools Thunderbird Import Wizard](#)

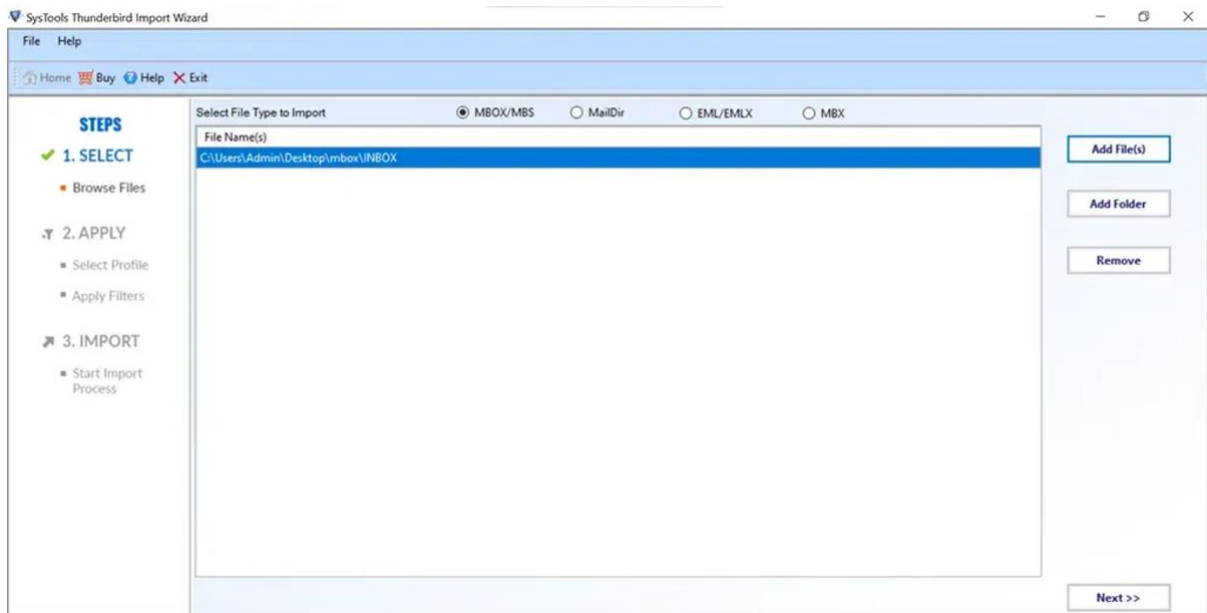
## Steps to Import Data into Thunderbird Using SysTools Software

All the instructions are listed below, simply follow, and import email data into Thunderbird application. Visit official webpage and download the utility and then install.

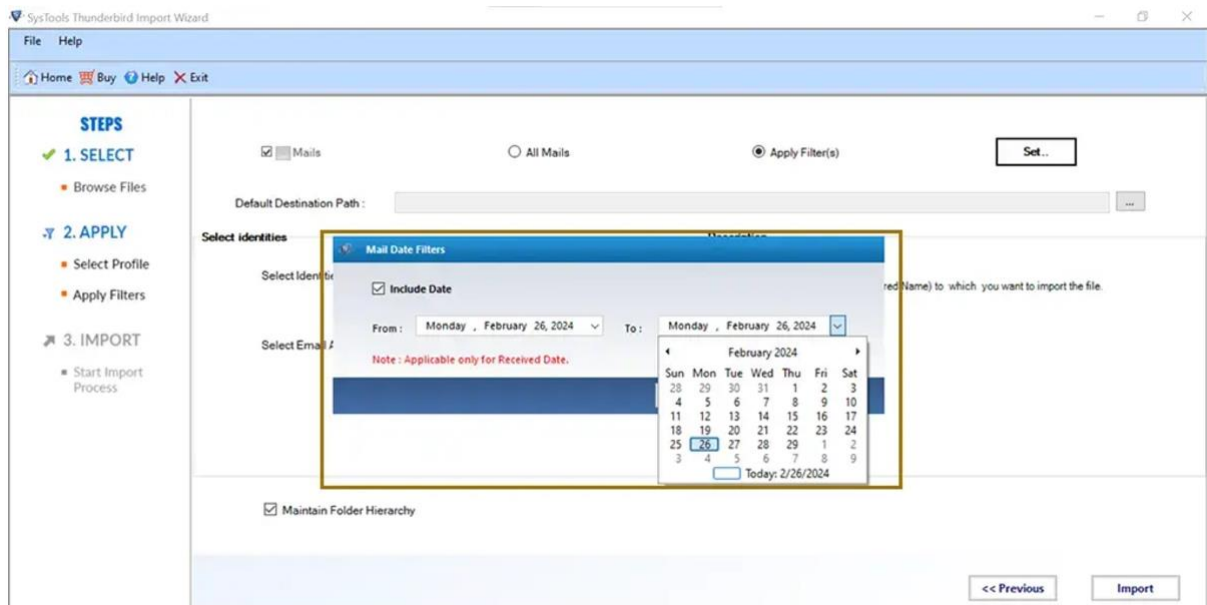
**Step-1:** Launch the “SysTools Thunderbird Import Wizard” software. Now, click on the “Add File(s)” button to import a single MBOX/MBS, MBX, EML, EMLX, Maildir file into the software.



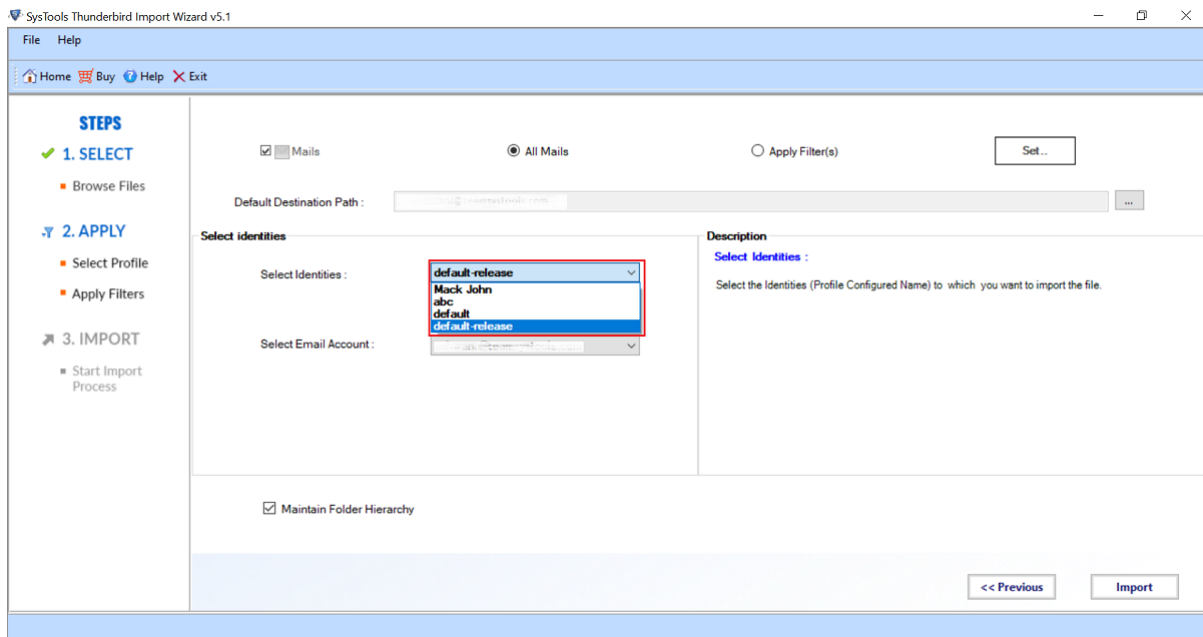
**Step-2:** Once a file has been added, the software will show the file on its interface. You can add more files or simply click on **Next** button to continue.



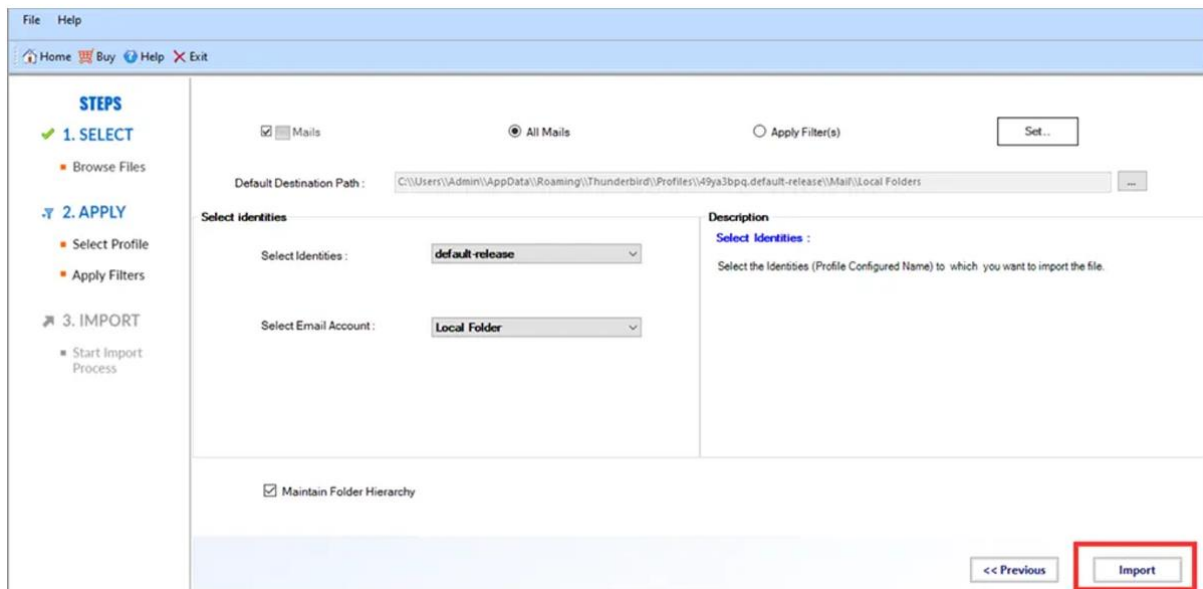
**Step-3:** Now, you can specify the **Optional** filters for importing data from the added files. To Apply filters, click on the corresponding radio button to “**Apply Filters**” text and click on the button “**Set**”.



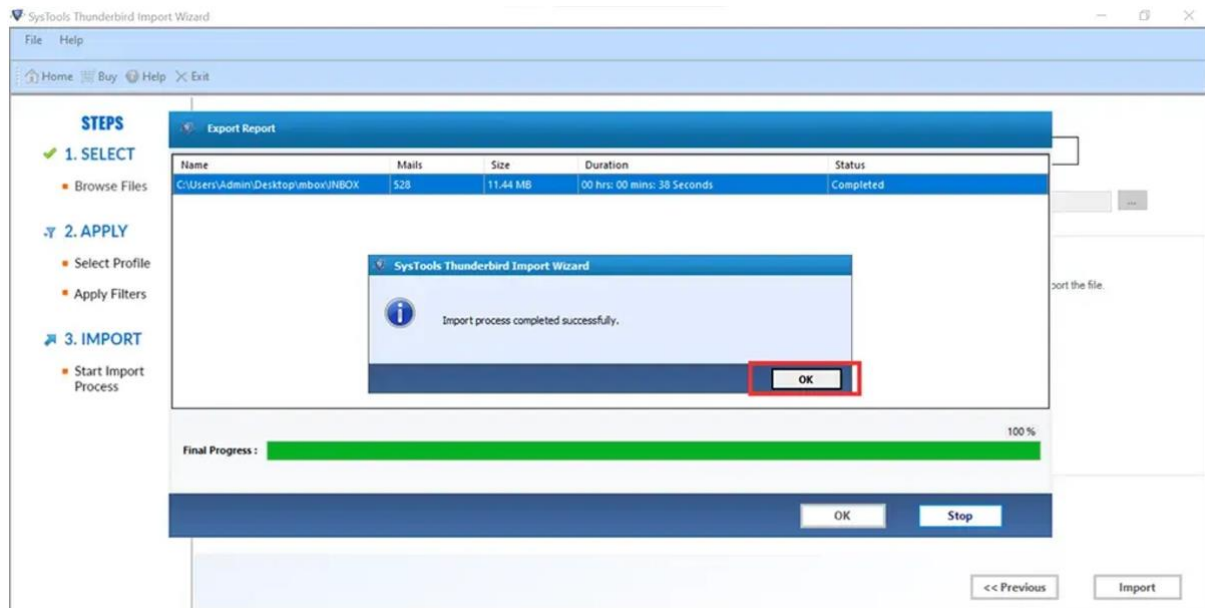
**Step-4:** The software will automatically show all profile's that are configured on the Thunderbird application. Select the identity from **identities dropdown list** in which you want to import MBOX/MBS, MBX, EML, EMLX, Maildir files.



**Step-5:** Choose **Maintain Folder Hierarchy** to maintain the on-disk folder hierarchy of the imported files. Click on **“Import”** to start the import process.



**Step-6:** The Import process will be completed successfully with a success message, click on “OK” as shown below.



## Final Points

- **Multi-Format Import:** Supports MBOX, MBX, MBS, EML, EMLX, and Maildir file imports into Thunderbird.
- **Profile and Folder Transfer:** Transfers entire Thunderbird profiles or specific folders to new systems.
- **Selective Import:** Import emails selectively using advanced date filters.
- **Retains Original Data Integrity:** Preserves metadata and folder structure during migration.
- **Batch Processing:** Import single or multiple files/folders simultaneously for efficiency.
- **Custom Path Support:** Easily import files stored at custom locations or external storage.
- **High Compatibility:** Works flawlessly with Thunderbird and Windows 11 and earlier versions.
- **User-Friendly Tool:** Simplifies the import process for all users.

**SysTools Thunderbird Import Wizard** is a reliable solution for users and businesses looking for a seamless, secure, and efficient way to import and manage email files in Mozilla Thunderbird.