



# ENDPOINT MANAGEMENT WORKSHOP

T-Mobile Polska Business  
Solutions  
ul. Marynarska 12  
02-674 Warszawa

# Endpoint Management Workshop

## Content and delivery



### What to expect?

Get an executive deep dive into remote deployment, management and security of corporate and BYOD devices, identities and data in your organization. Our goal is to show you the best ways to manage and secure endpoints at the enterprise level. We'll provide you with the ability to protect your authorized users' identities so you can authenticate credentials and manage access while still giving users the freedom to collaborate with others.

### What will we showcase?

#### Secure your identities and devices

- ✓ Microsoft Entra ID overview
- ✓ Conditional Access
- ✓ Microsoft Defender for Endpoint
- ✓ Windows 11 Security
- ✓ Windows Autopatch overview

#### Microsoft Edge

- ✓ Microsoft Edge

#### Microsoft Devices

- ✓ Microsoft Surface
- ✓ Surface Hub
- ✓ Microsoft Teams Rooms
- ✓ HoloLens

#### Simplify IT management with Intune

- ✓ Enroll overview & enablement
- ✓ Configure overview & enablement
- ✓ Protect overview & enablement
- ✓ Support & Retire overview & demo

#### Analytics and Reporting

- ☐ Endpoint analytics
- ☐ Intune reporting and Graph API

#### Intune for Education

- ✓ Intune for Education deployment
- ✓ School Data Sync deployment

#### Upgrade to Windows 11

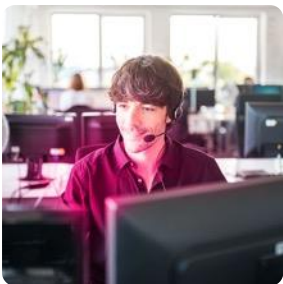
- ✓ Windows 11 Enterprise overview
- ✓ Upgrading and deploying Windows 11 Enterprise
- ✓ Refresh Windows devices

#### MDM Migration

- ✓ MDM migration overview

#### Intune Suite Solutions

- ✓ Intune Suite Solutions overview
- ✓ Endpoint Privilege Management
- ✓ Advanced Endpoint Analytics
- ✓ MAM tunnel
- ✓ Remote Help



### Why should you attend?

Experience the power of modern device management within your own environment. This workshop will show you how to leverage intelligent security, risk-based controls, zero-touch provisioning, advanced analytics, and deep integration to the Microsoft products you already use. By attending, you can:

**Learn** how to improve your management capabilities with Microsoft Endpoint Manager.

**Discover and protect** your endpoints by enforcing policies and deploying security tools.

**Secure** your users' identities with multi-factor authentication and conditional access from any device.

**Enable** your users to be productive with the applications they need, on the devices they want.

# Manage and protect your devices, your apps, and your users



“Modern device management encompasses a wide range of areas including user protection, adding/removing devices, managed applications, end user support, and rolling out new capabilities.”

—Forrester 2020 Microsoft 365 Enterprise Total Economic Impact Study

How are you managing your mobile devices, laptops, and other user endpoints? Do you know if your user's devices are compliant with your IT policies?

## Enable users to be productive, on any device, without compromising IT security

Today's users are looking for more ways to remain productive while working on any device. 95% of organizations allow personal devices in the workspace. All these devices add additional risks, when you consider that 70 million smartphones are lost every year.

With users asking for more ways to work the way that they want, this workshop will show you how to manage both company-owned and user-chosen devices in the cloud.

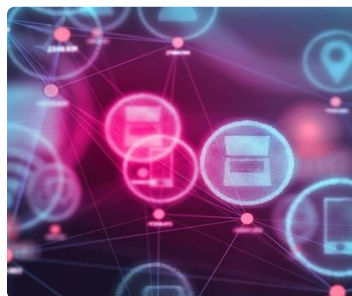
## Workshop highlights



Improve your Microsoft Secure Score with Microsoft Endpoint Manager



Learn how to build management policies that protect your users, company data, and devices



Gain insights about your users' endpoints and their compliance with your IT policies



Determine the best way to give your users access to the apps they need on the devices of their choosing

Contact us to get started:

Jolanta Anders

[Jolanta.anders@business.t-mobile.pl](mailto:Jolanta.anders@business.t-mobile.pl)

T-Mobile Polska Business Solutions

ul. Marynarska12

02-674 Warszawa