

TE PLAY

E2E VIDEO PLATFORM



RDK

LG webOS

firetvstick

androidtv

Roku

TIZEN
SAMSUNG



12 Pre integrated apps



TE PLAY

PlaySMS | PlayCMS | PlayMerge+ | EngageX | uLike | UIGenie | B2BNet | IntelliPlay



Partner Ecosystem



Microsoft Azure

broadpeak

intertrust

gracernote

checkout.com

Google Ad Manager

TATA COMMUNICATIONS

SendGrid

new relic

routemobile
communication simplified

Razorpay

BillDesk

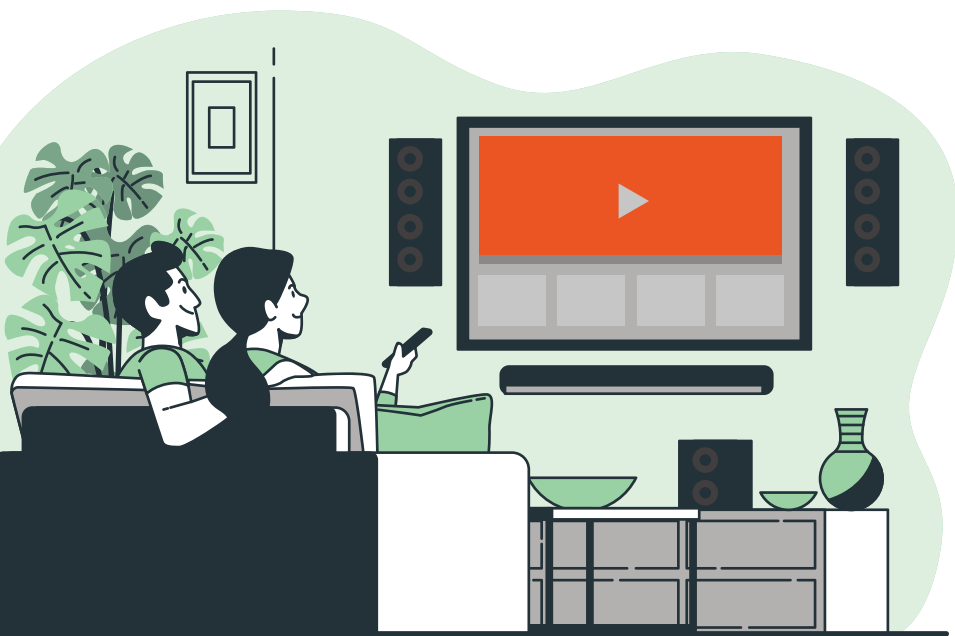
YOUTUBORA



WHITE LABEL END-TO-END VIDEO PLATFORM FOR QUICKER TIME TO MARKET

TEPlay is a pre-integrated, highly scalable, and a secure video platform addressing the complete video streaming needs through in-built modules to drive your business by data and intelligence.

Enabled with monetization avenues TEPlay is a performance-driven solution, delivering seamless experience across devices.



We help address your business critical issues



HYPER PERSONALIZATION

Enhanced user experience

DYNAMIC PRICING

Improved customer conversion

BUNDLING OF SERVICES

Customization for target segments

INBUILT DYNAMIC UI COMPOSER

Faster content discovery

AI POWERED USER SEGMENTATION

Improved customer engagement

PlaySMS

Tiered Pricing, Recurring Subscription, Pay-Per-View, Freemium, Free Trials, Offers & Promotions, Add-ons, Hybrid Plans, Partner Plans... *and lots more!*

PlayMerge+

Fully automated content aggregation module. Any content partner and content, don't worry *we have it covered.*

uLike

Intelligent recommendation engine powered by *state-of-the-art AI & ML.*

UIGenie

Dynamic-UI-Composer that manages all your apps and its experience. Realtime changes of content presentation on the apps at your finger tips.

PlayCMS

Content hub to manage all your content.

Multi-language Metadata, subtitles, business policies, auto scheduling. Platform targeted images & creatives running on Dynamic Image Management *service is a big plus!*

B2BNet

Manage your device inventory and your channel partners in a single portal. Device activation along with credit management capabilities.

EngageX

Improve your customer retention strategy. Engage your users with targeted notifications (push, in-app, email, SMS notification)... *make interesting conversations with your users!*

IntelliPlay

Our in-built analytics portal lets you create critical dashboard for all your business functions. *Actionable insights for intelligent decisions!*

TATA ELXSI

Tata Elxsi Limited, ITPB Road, Whitefield
Bangalore - 560048, India

info@tataelxsi.com | www.tataelxsi.com

KNOW MORE



CONTACT US

