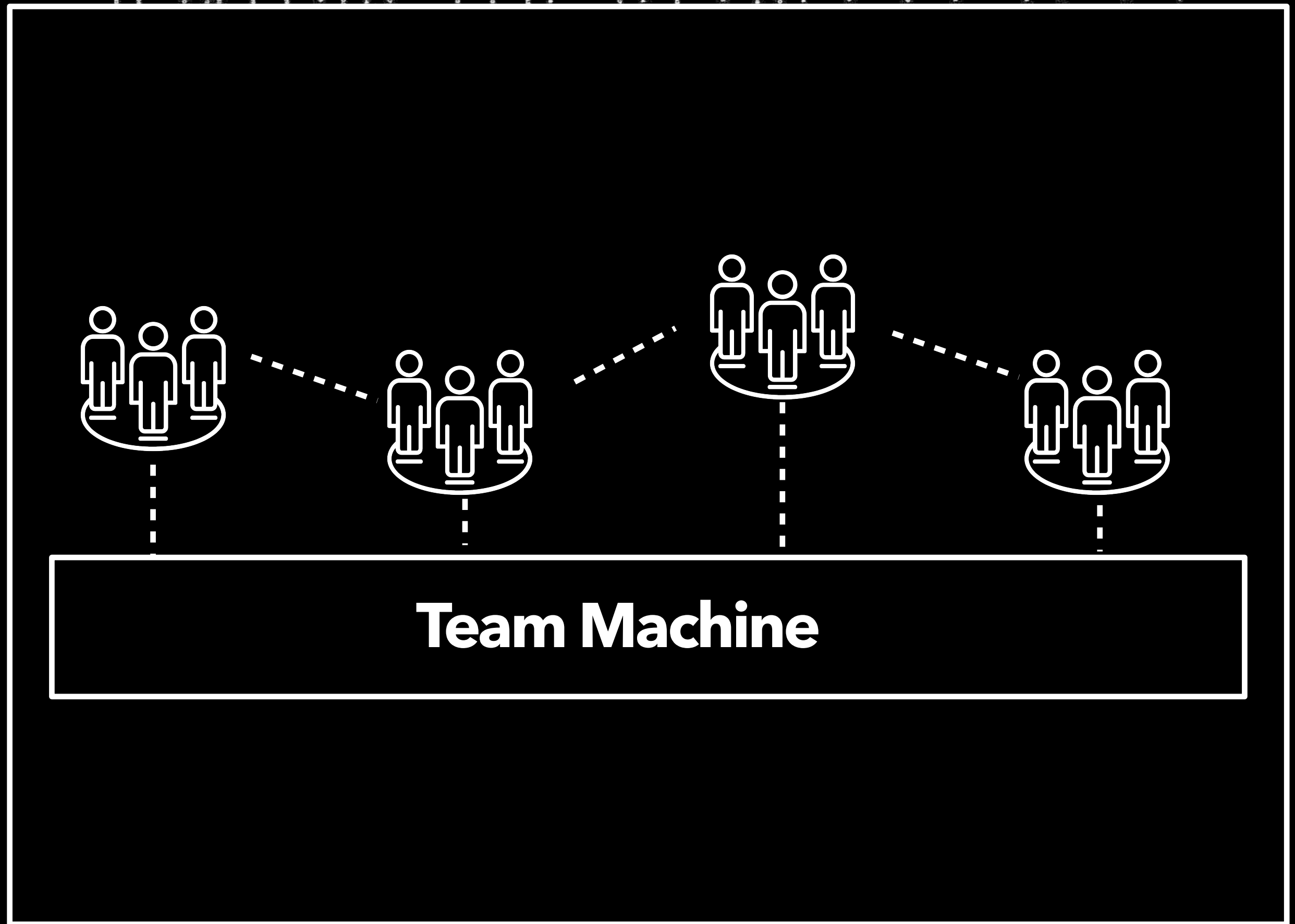
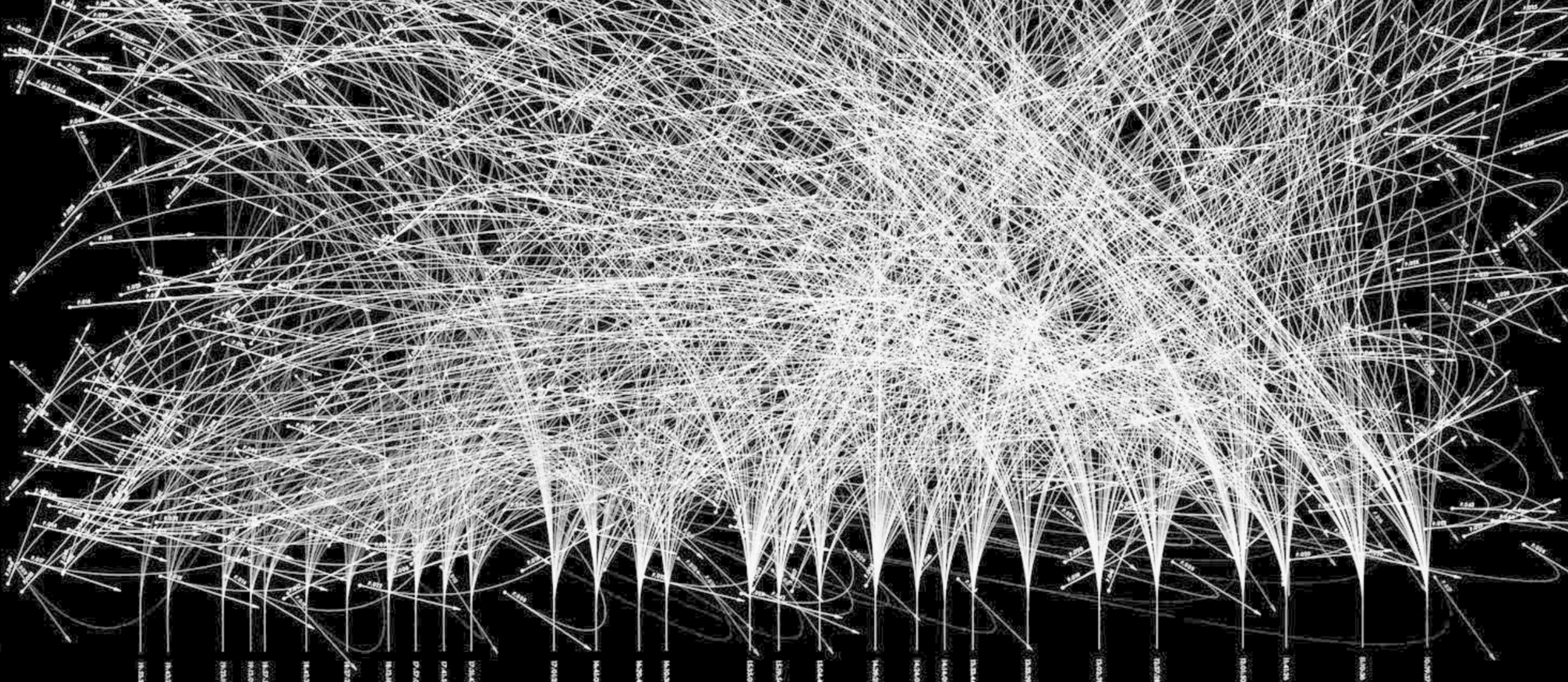
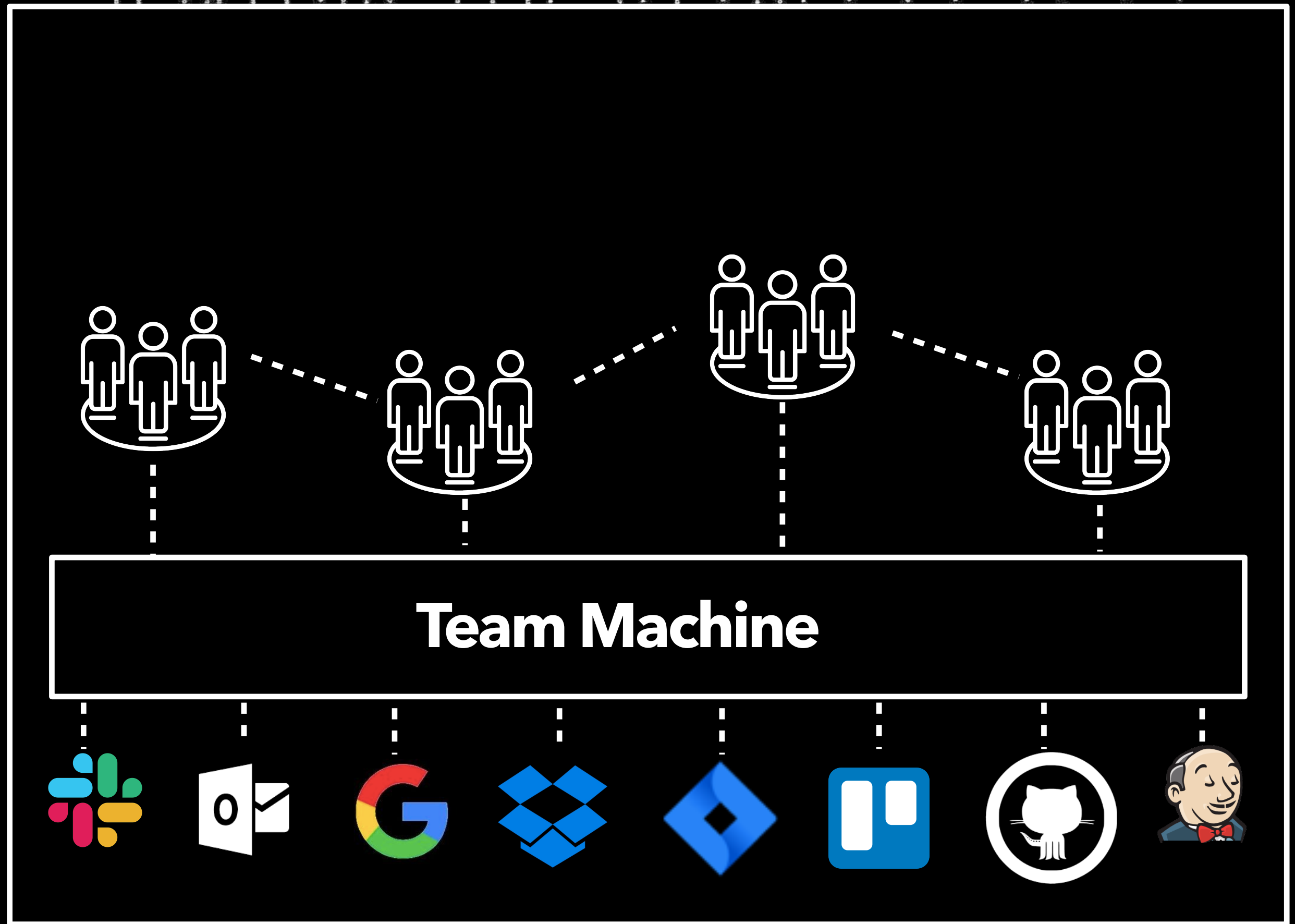


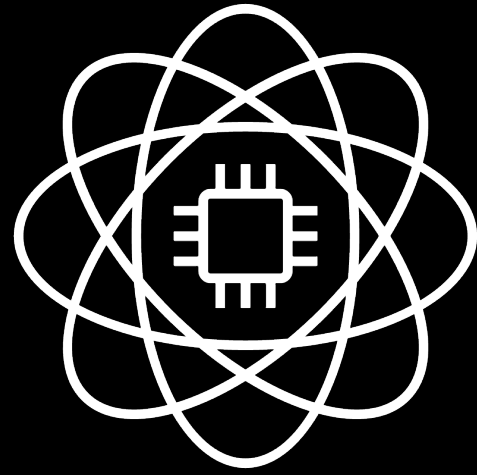
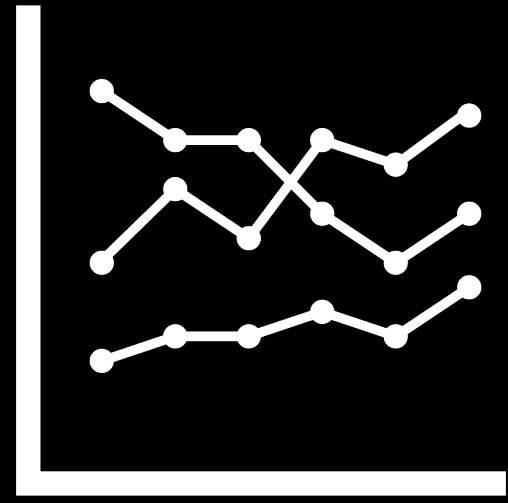
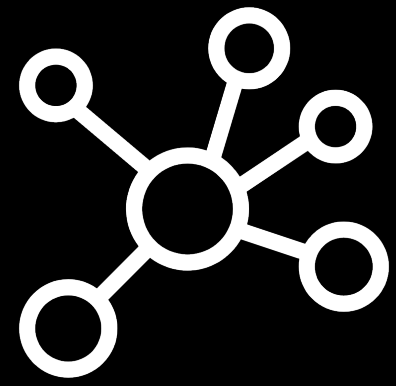
**Team Machine offers the data infrastructure  
to connect your company from within.**





**It does this by collecting, cleansing and connecting the data that is generated every day at work by teams.**



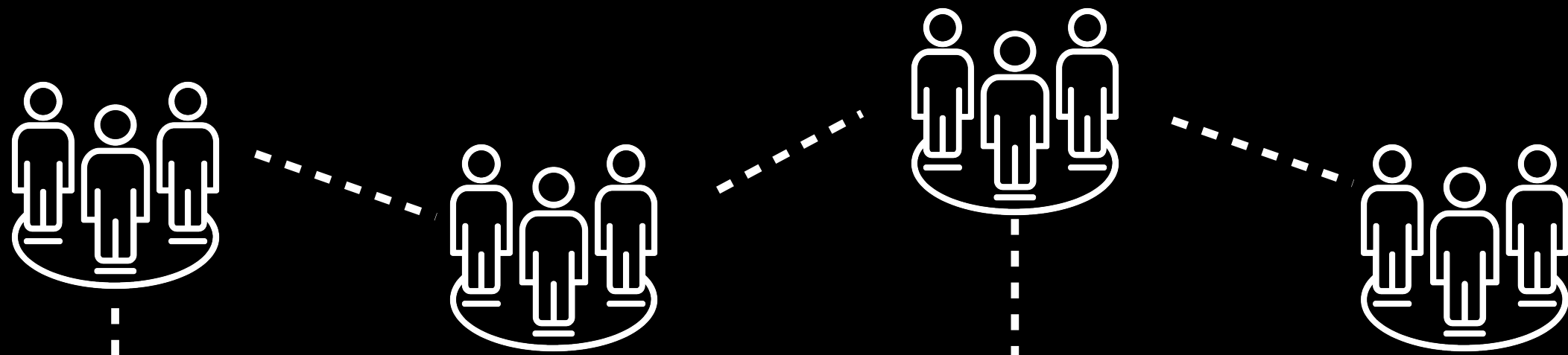


**Connected  
dataset**

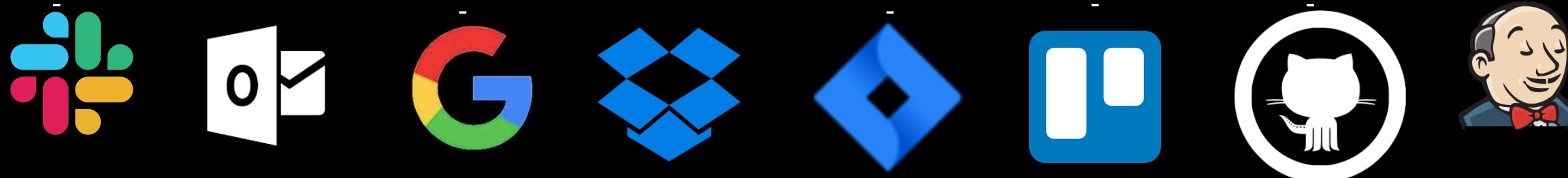
**Single info  
environment**

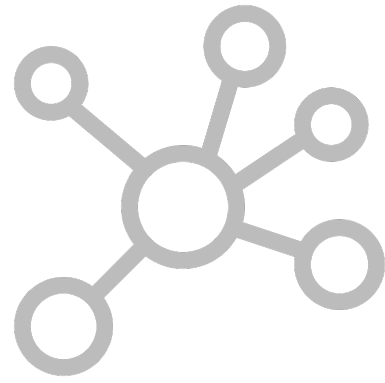
**ML  
at scale**

**Team Machine gives your teams  
a connected dataset,  
a single information environment and  
an ability to deploy machine learning at scale**



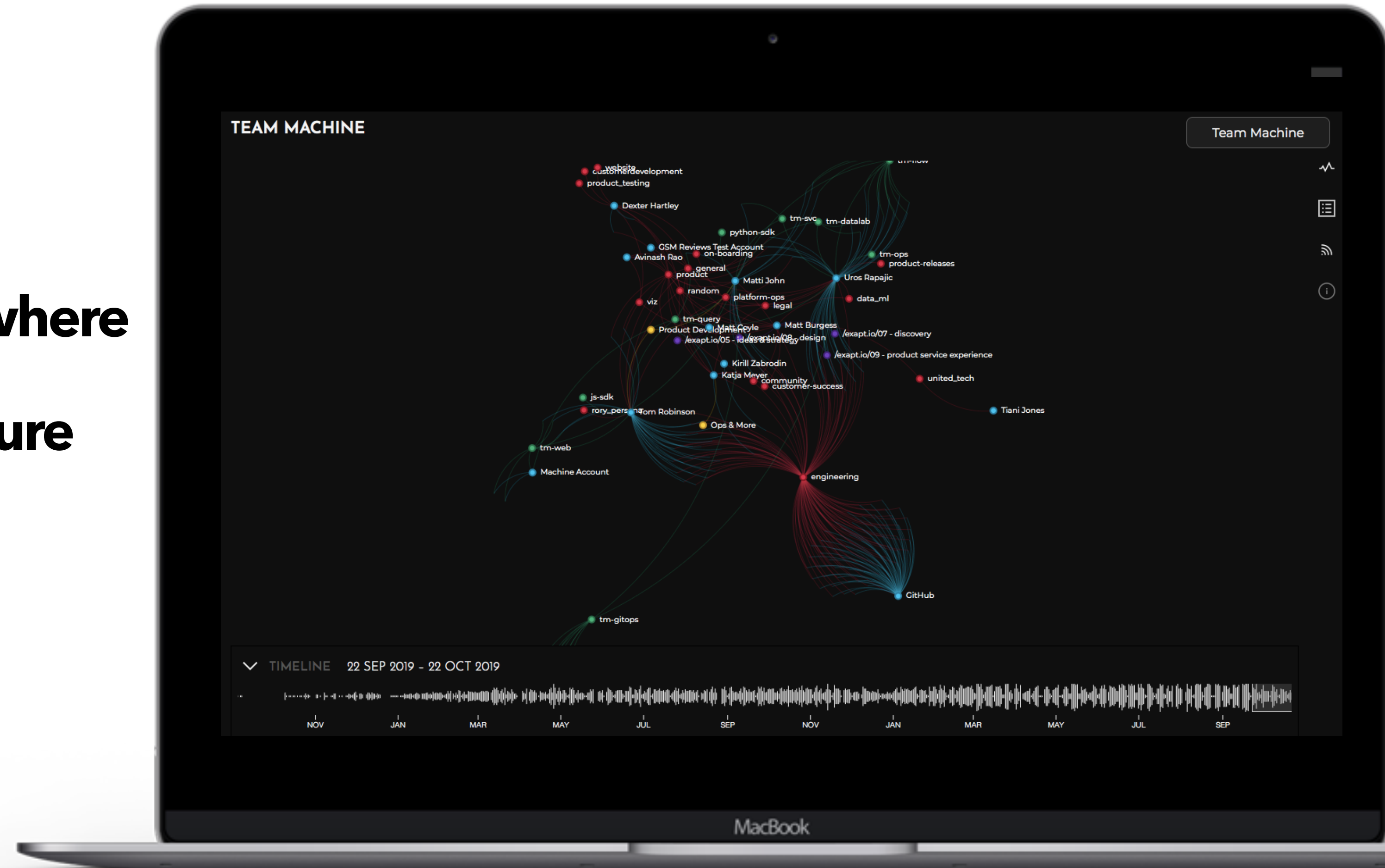
**Team Machine**



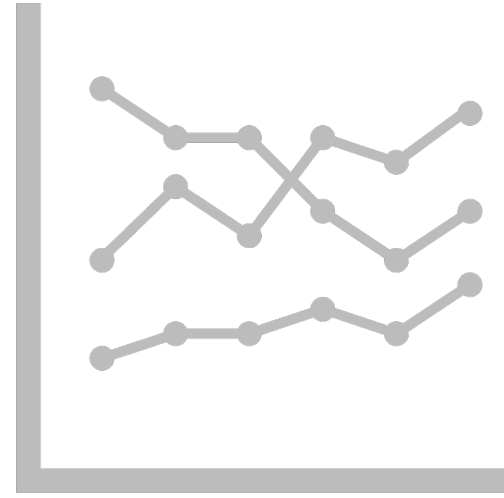


## A connected dataset:

- **Covering who worked on what & where**
- **Connected in a graph data structure**
- **And available over time**

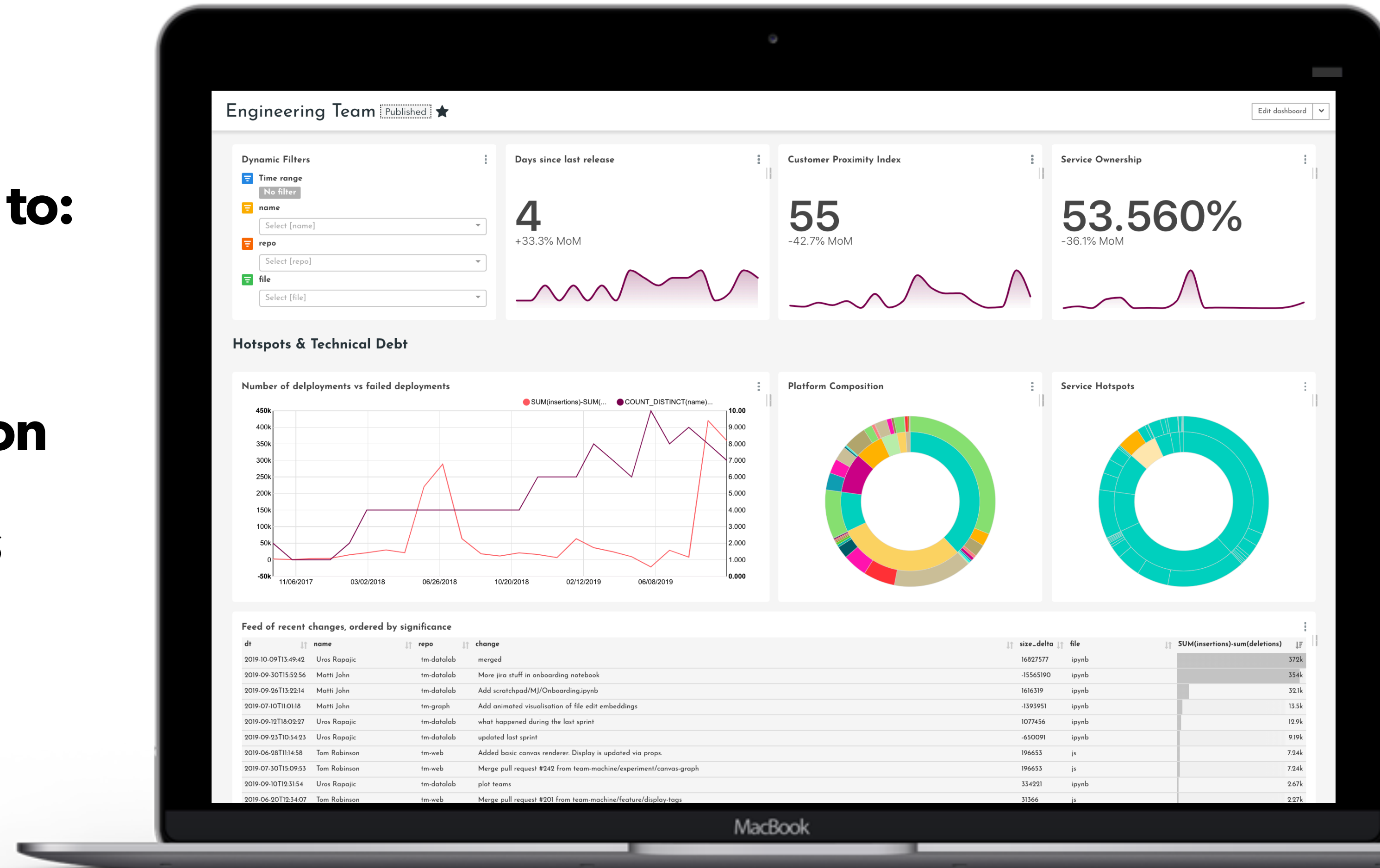


A digital mirror of how your organisation **actually** works

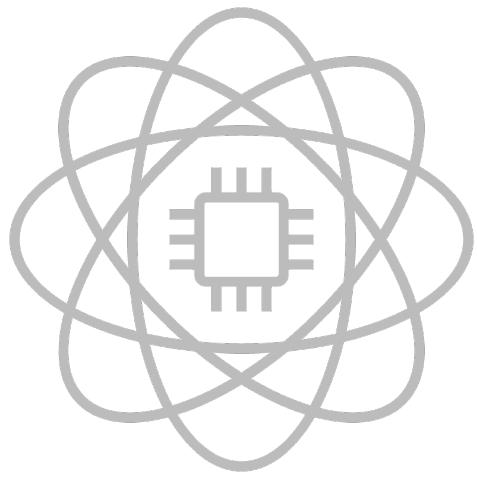


## A single information environment to:

- Discover your data assets
- Analyse and visualise information
- Share and tell data rich stories



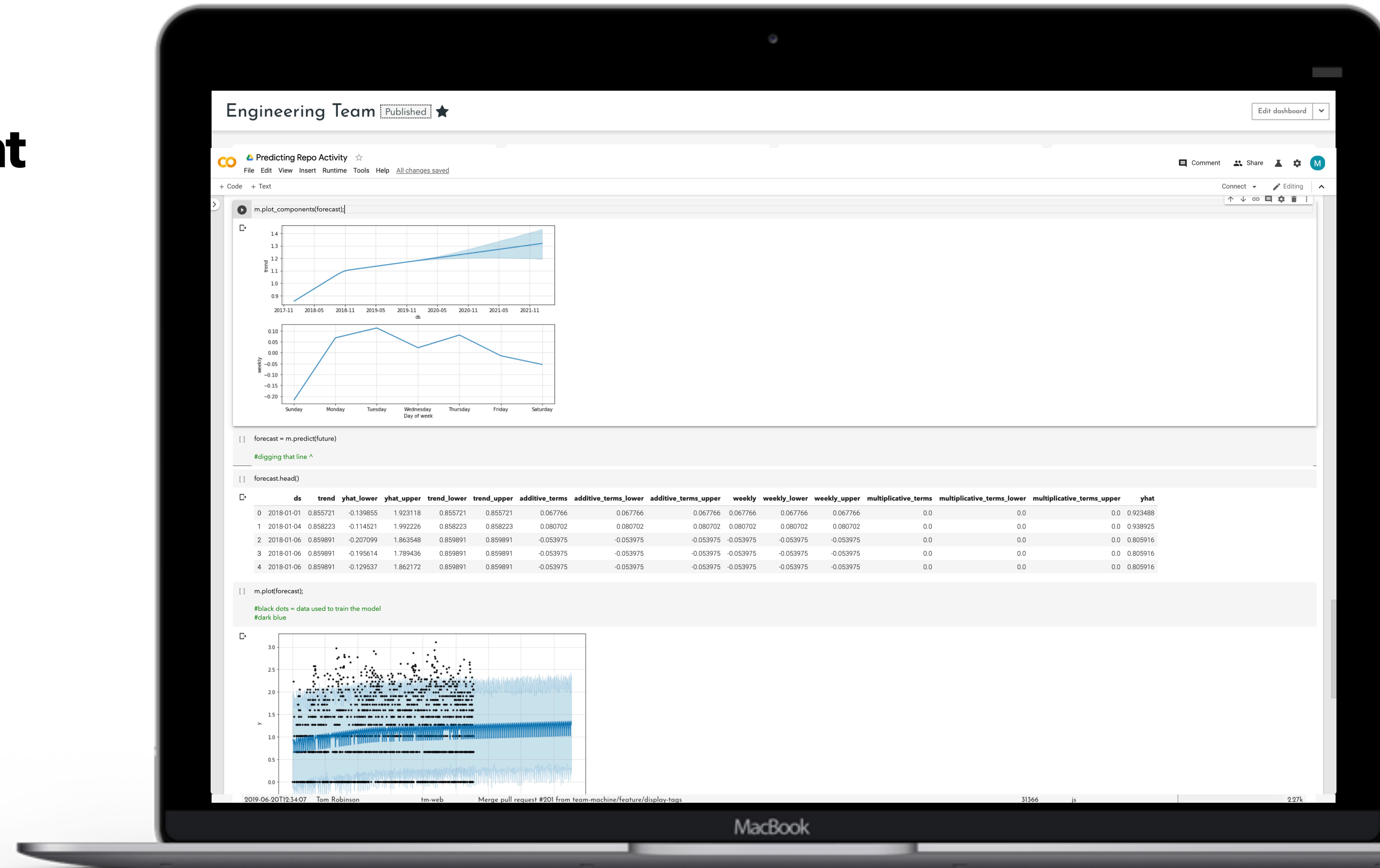
Analyse, visualise your information into dashboards - shareable and searchable



## A machine learning environment

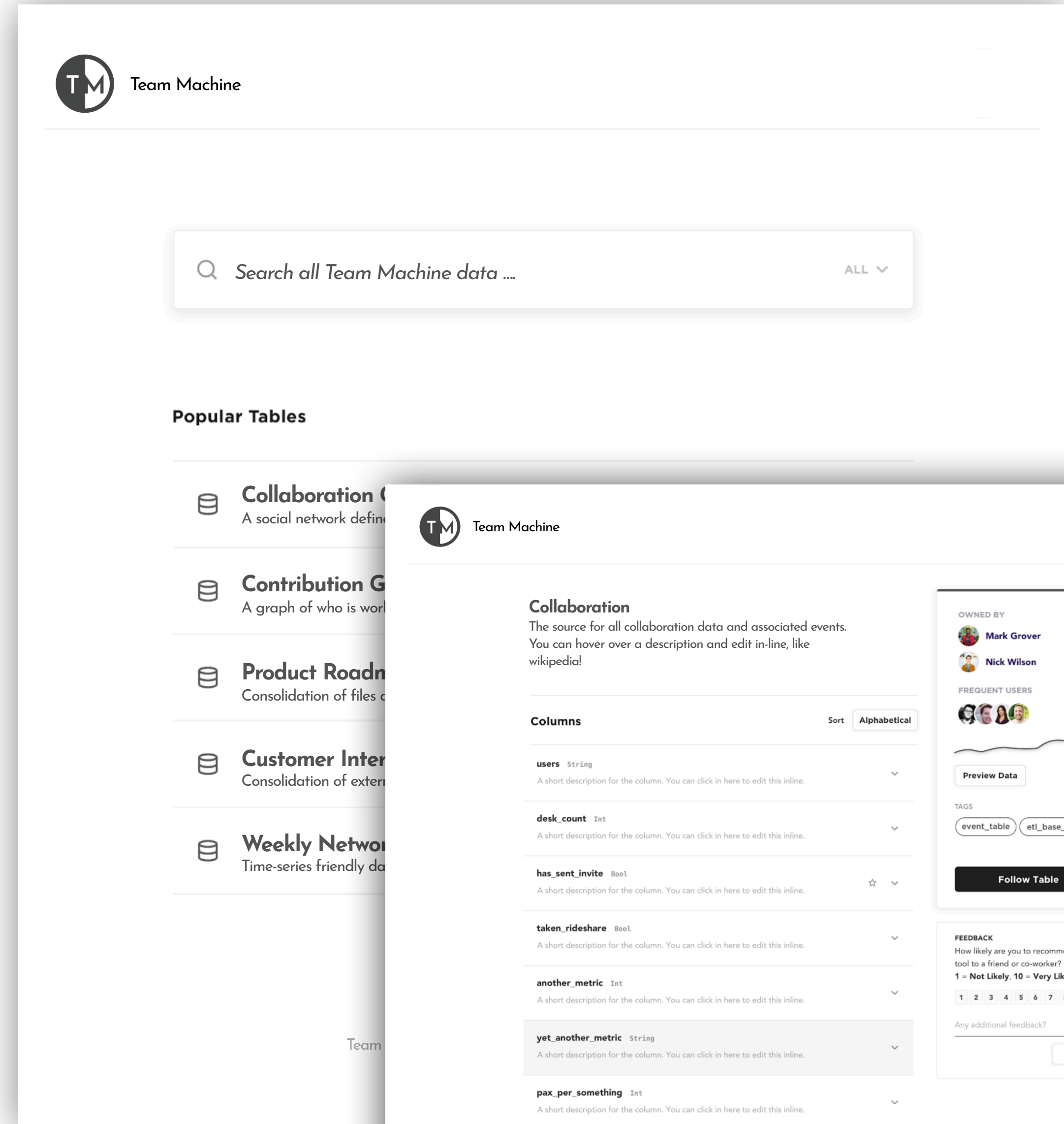
to deploy models such as:

- Anomaly detection
- Change point detection
- Network similarity detection



Machine Learning Environment - Train and implement ML models

**Democratising data enables a culture of data-enabled decision making, borne from the trust that the data comes from live assets.**



**It helps teams, managers and executives  
stay on the same page.  
With short feedback loops built-in to reach  
them where they choose to hang out.**

