

TECH-ARROW

Your vision of technological evolution



TECH-ARROW – Introduction to contentGATE migration

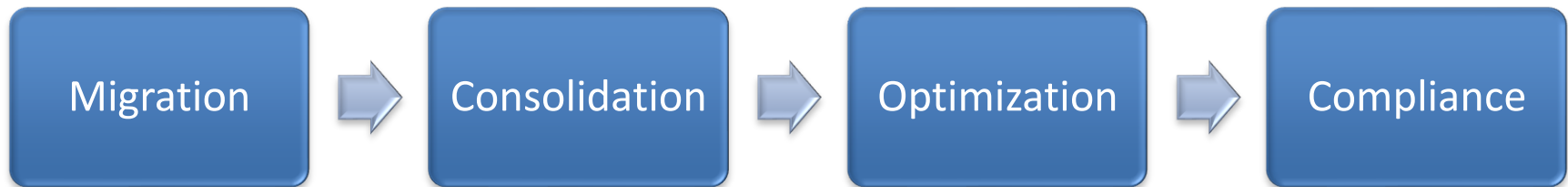
Jozef Végh CEO

Confidential, all rights reserved, property of TECH-ARROW

Agenda – Introduction of **contentGATE**

- **What is contentGATE?**
- **Why contentGATE?**
- **Sales**
- **Functionality**
- **Demo**

What is contentGATE?



**of email archive systems
of messaging systems
of DMS/ECM systems**

Why contentGATE?

Replacement of the former system

- Customers are not satisfied with the legacy system
 - No or insufficient support
- Abandoning the product, EOL, no support
 - Example Mimosa
- Missing functions

Consolidation / Optimization

- Company acquisitions
- Migration of archive data from Server A to Server B
- Merging of multiple archive mailboxes
- Handling of mailarchives of leavers

Exchange 2010/2013 Archive

- Migrating email archive into Exchange 2010/2013/2016 archive mailbox
- Faster ROI – After the migration no more maintenance, administrative and HW cost with legacy system
- Smaller TCO – There is only one system to maintain

Who needs email archive migration?

New acquisition

- Customers who are already using a legacy email archive system
- Customers who want to migrate from a legacy email archive system into Exchange 2010/2013/2016 or O365 using the archive mailbox
- Customers who want to migrate specific emails from Exchange environments into Exchange 2010/2013/2016
- Customers who want to migrate from other email systems into Exchange
- Customers who want to migrate PSTs into Exchange 2010/2013/2016 or O365 archive mailbox

Who needs email archive migration?

Existing customers

- Customers who want to consolidate the existing archive
 - Moving a user from archive A to archive B
 - Special archive for leavers
 - Special archives for litigation
- Customers who want to migrate into Exchange 2010/2013/2016 or O365
- Migrating the archive into Exchange 2010/2013/2016 or O365 archive mailbox

What source systems are supported?

Emailarchive

- Symantec Enterprise Vault
- Opentext / IXOS
- EMC Email Xtender
- EMC Source One
- Autonomy / Zantaz EAS
- Metalogix Archive Manager
- Saperion ELM
- Easy for Exchange
- D3.Link for Exchange
- Mimosa Nearpoint
- Easy for Exchange
- IQ Store Suite
- HP IAP

Emailserver

- Lotus Notes
- MS Exchange 2003, 2007, 2010, 2013, 2016
- PST
- Office 365
- Groupwise

What target systems are supported?

Emailarchive

- Metalogix Archive Manager
- Saperion ELM
- Symantec Enterprise Vault
- D.Link for Exchange
- contentACCESS
- inPoint for Exchange

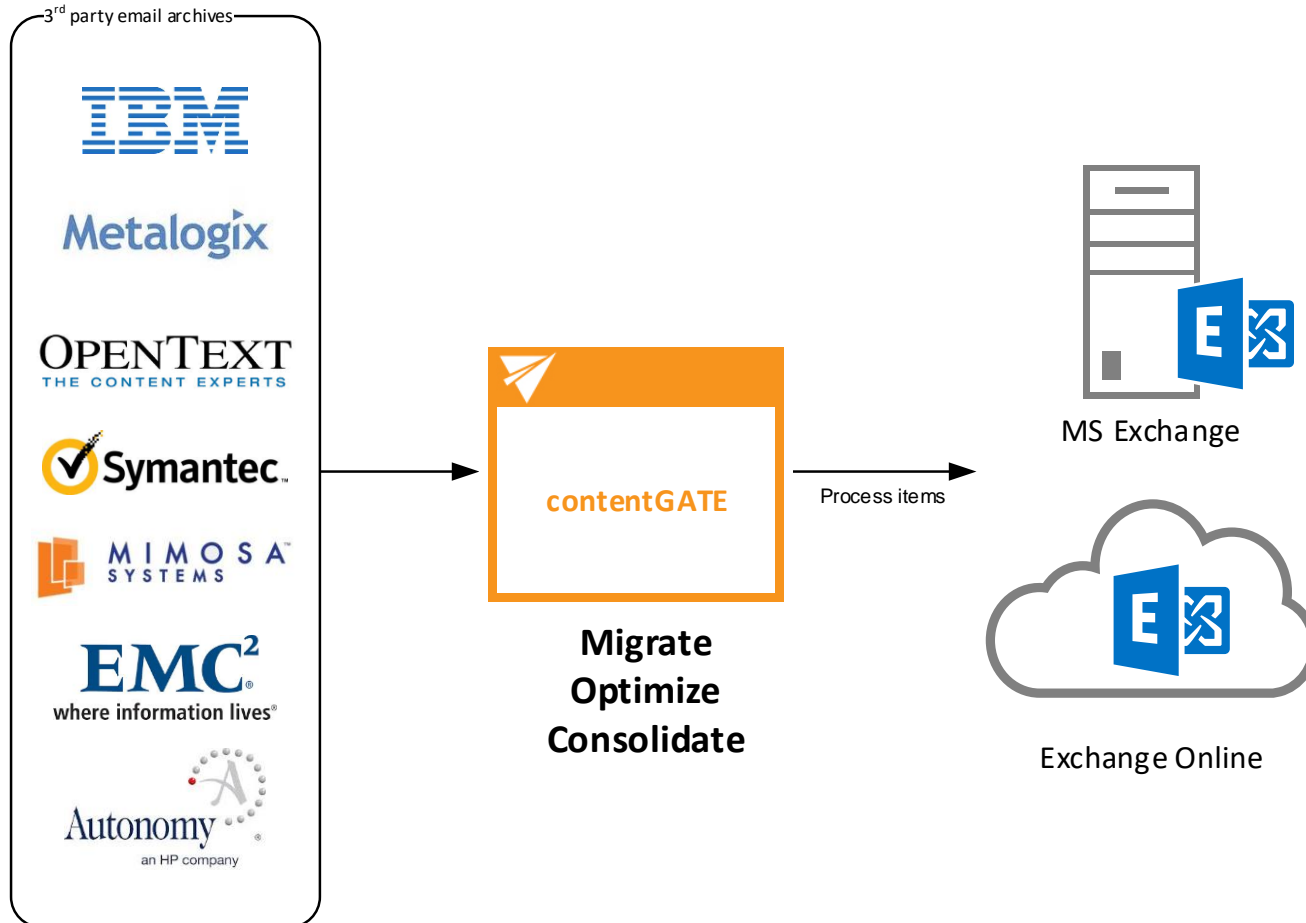
Emailserver

- MS Exchange 2010, 2013
- MS Exchange 2010, 2013 Archive Mailbox
- PST, EML, MSG
- Office 365

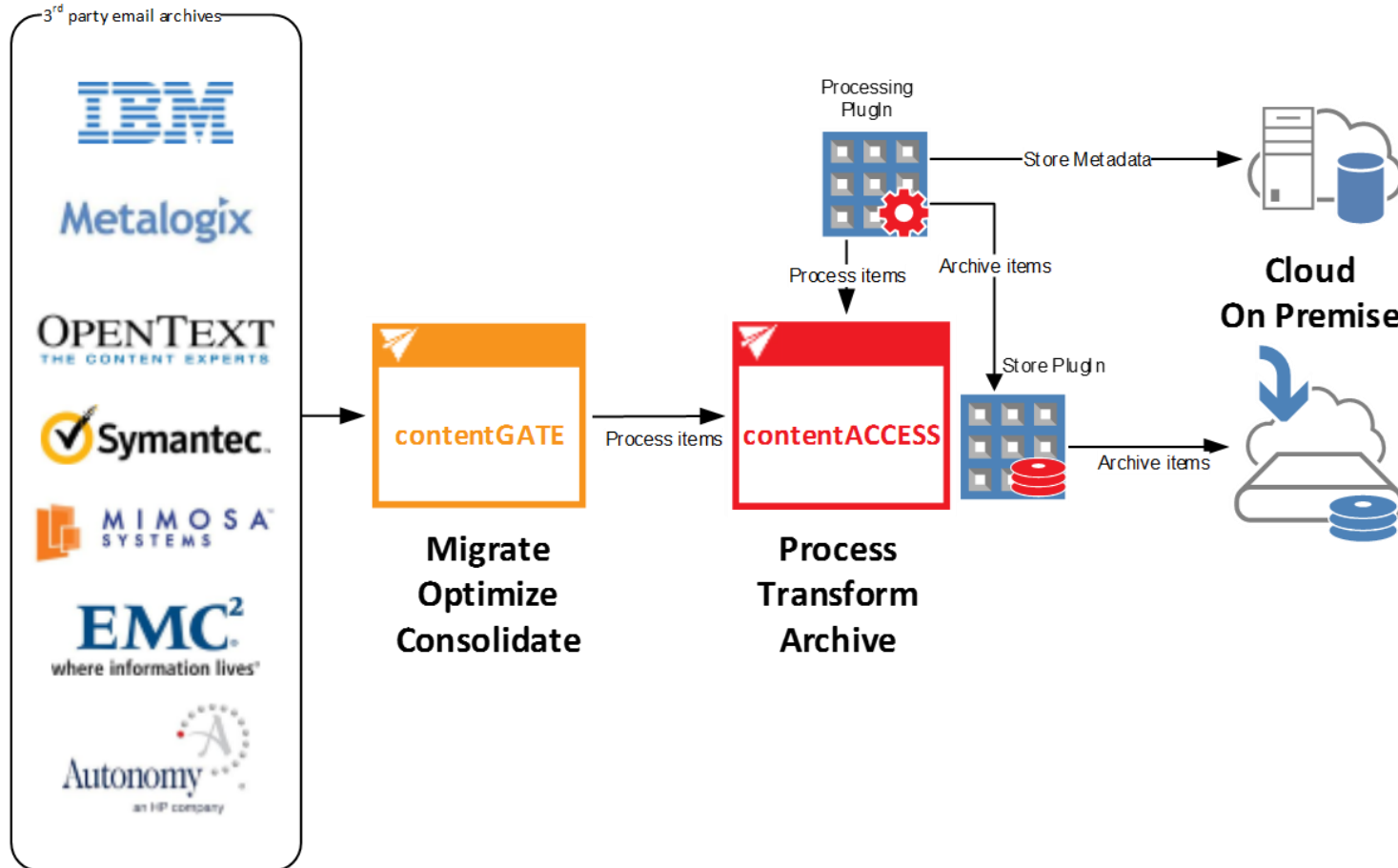
Others

- MS SharePoint
- Cloud storage providers like Amazon S3, MS Azure etc.
- Saperion DMS
- Easy DMS
- Kendox
- Optimal Systems Enaio
- DATEV DMS
- Datengut DMS
- D.Velop D3

Migration architecture



Migration architecture



Customers, projects

Migration projects

- Already installed on 4 continents!
- Europe, Africa, America, Asia
- More than 200 installations

Some customers

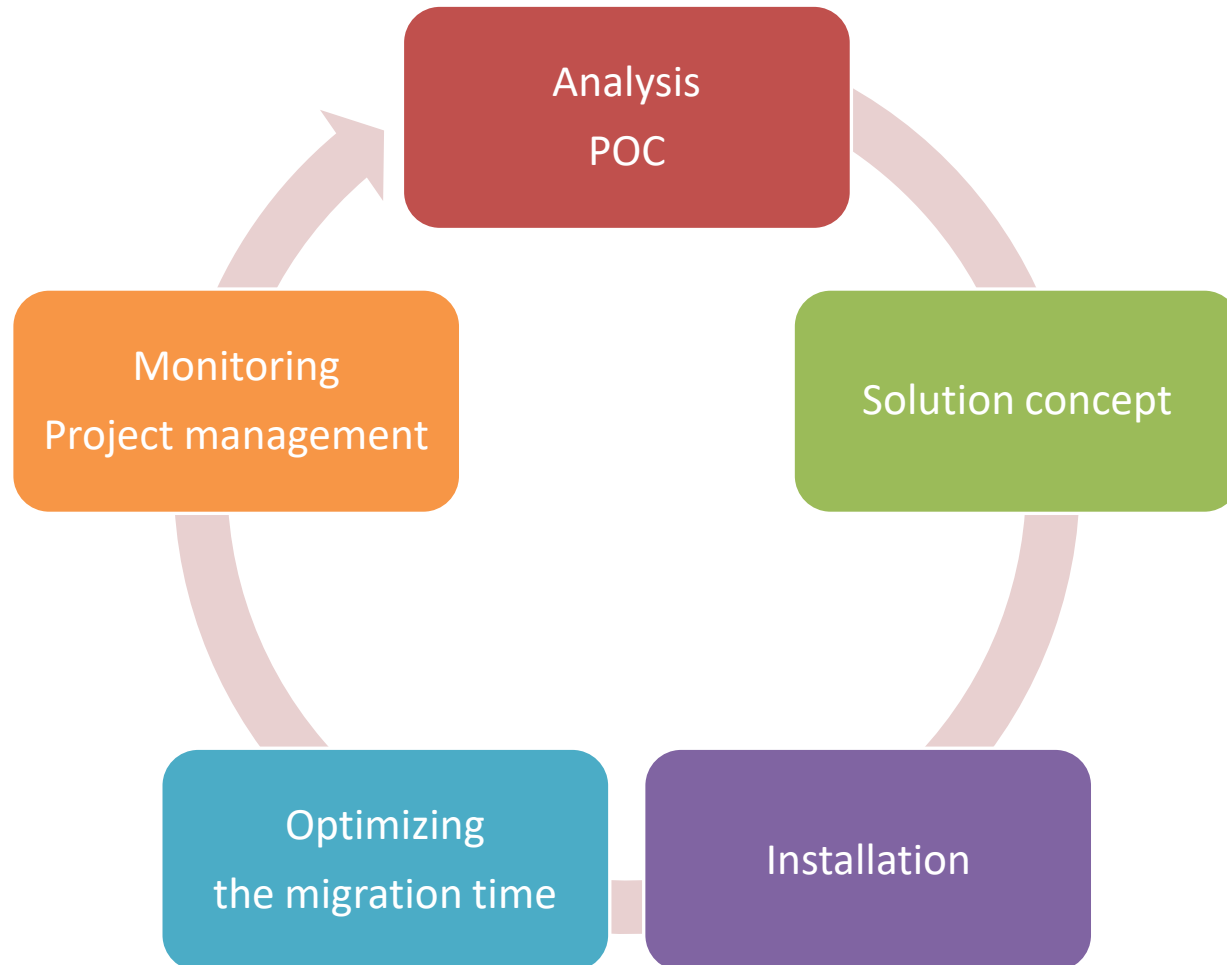
- UPC, 8TB, 40 million items
- Egger, 300 mailboxes, 1TB, 6 million items
- Bär & Karrer, Switzerland, 3TB, 20 million items
- CBRE, 50TB
- Volkswagen 8TB
- Forbo 2TB, Office 365

Questions and arguments

Qualification questions

- Are you already using an email archiving system?
- Are you satisfied with the functionality/stability/support of your existing email archiving system?
- How big is the data amount you want to migrate?
- Do you want to migrate your all data?
- Do you plan using Exchange 2010/2013/2016/O365?
- Do you want to use the archiving feature of Exchange 2010/2013/2016/O365?
- Do you use multiple archive servers? Do you want to migrate users between differenc archive servers?
- What happens with users who are leaving the company?

Project execution



Project execution / 1TB

Analysis, POC – 1-2 days

- It is not free of charge
- To identify what exactly needs to be migrated, Retention time management
- Architecture, topology, volume
- Identify possible issues

Solution concept – 2 days

- Extends the facts gathered in POC
- Definitive migration architecture – number of migration servers, sizing
- What needs to be migrated, exceptions
- User mapping
- Retention times
- Custom configuration, development

Installation – 1-2 - days

- Installation of the target archive system, configuration (if necessary)
- Installing contentGATE
- User mapping
- Test migration
- Installation protocol

Monitoring/ Projektmanagement – cca. 1 day every 2 weeks

- Performance measurement, optimization if necessary
- Checking the migration status – correctness, completeness
- Reconfiguring the target archive if necessary – renaming folders etc.
- Changing retention times if necessary etc.
- Control of client access

contentGATE – the product

Installation package

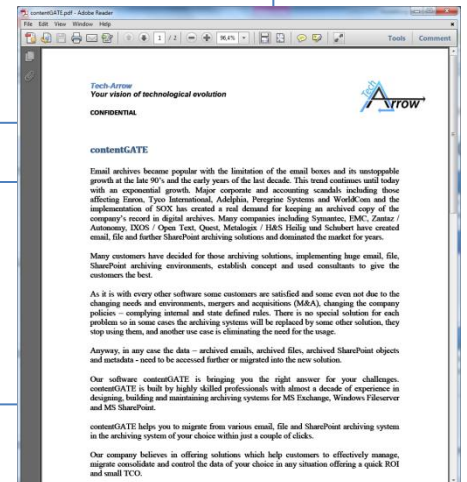
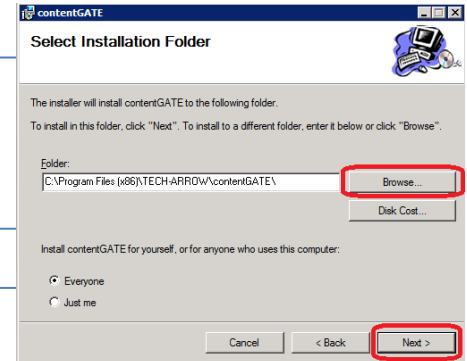
- Simple download
- Deployed fast

Documentation

- Manual
- Whitepaper
- Presentation
- Videos
- Pricelist

Demo

- VM - we can provide some example VMs
- We support you to set up your own environment
- Really easy to understand and present



Functions & features

Preparing the premigration

- Creation of a metadabase for faster migration

Managing the migration

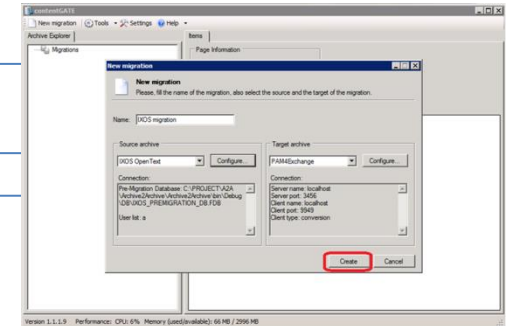
- Source system
- Targe system
- User mapping – automatic or manual

Migration

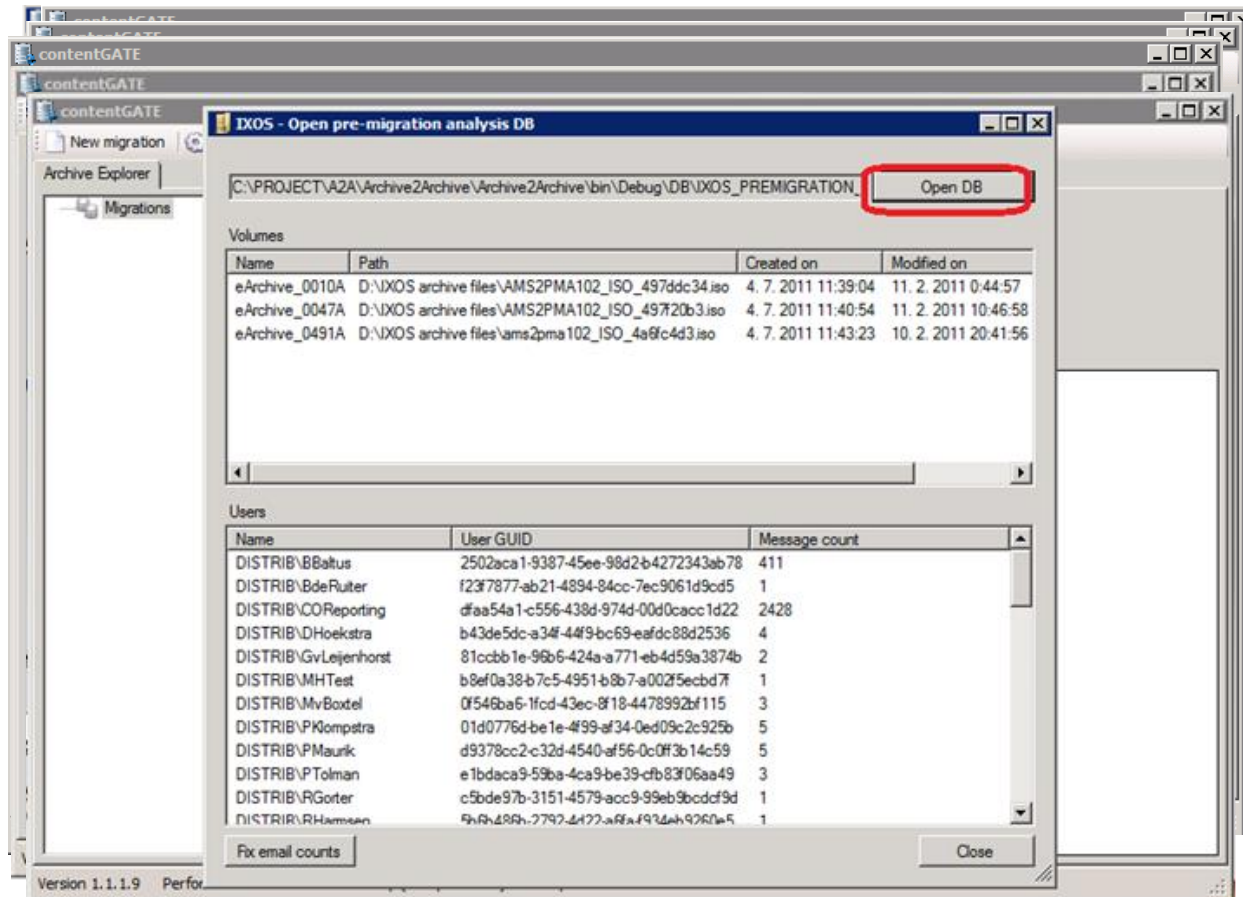
- Usergroups
- Granularity: User or Group level
- Item migration
- Shortcut migration
- Reset the migration
- Setting retention times

Statistics and logs

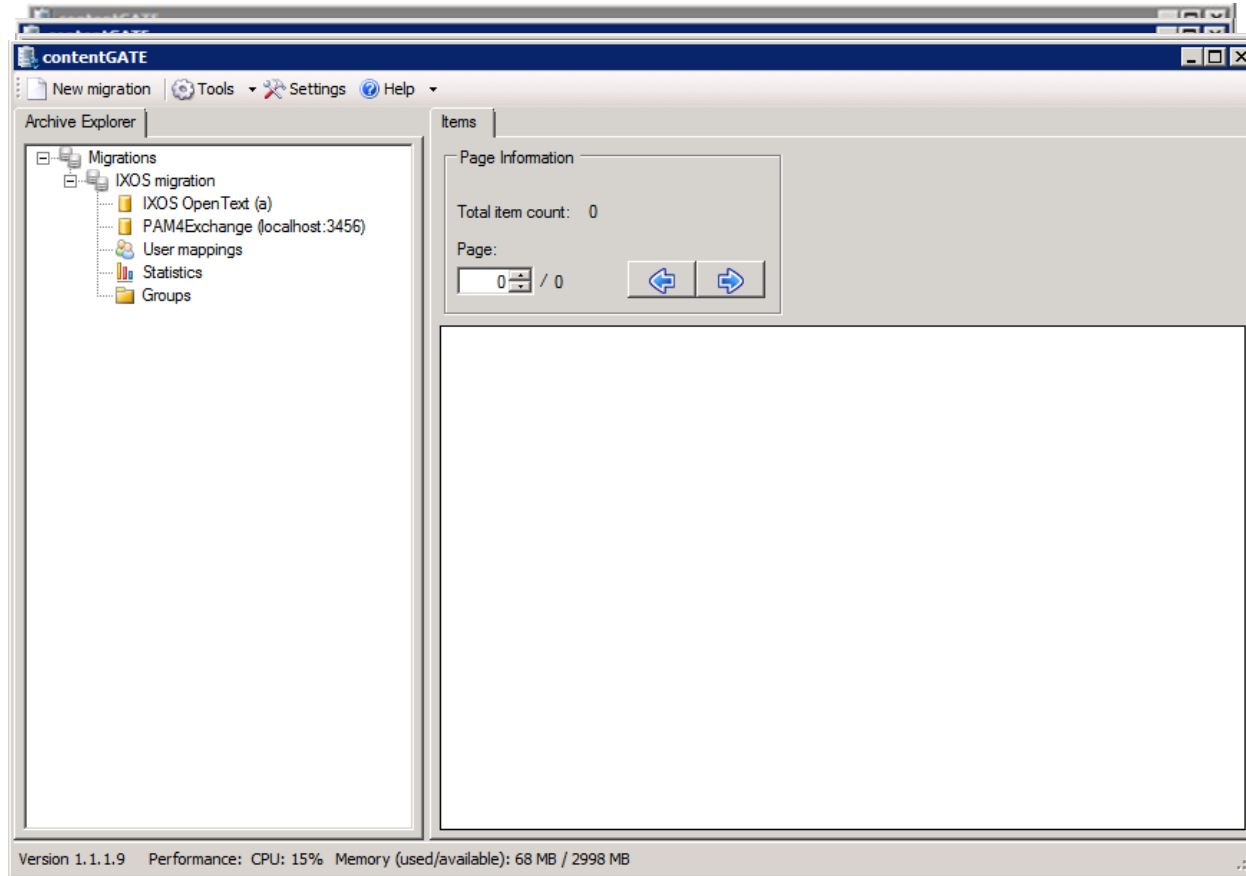
- Extended infomration about each migrated item
- XML Format, which can be analyzed in Exce
- Database log
- File log



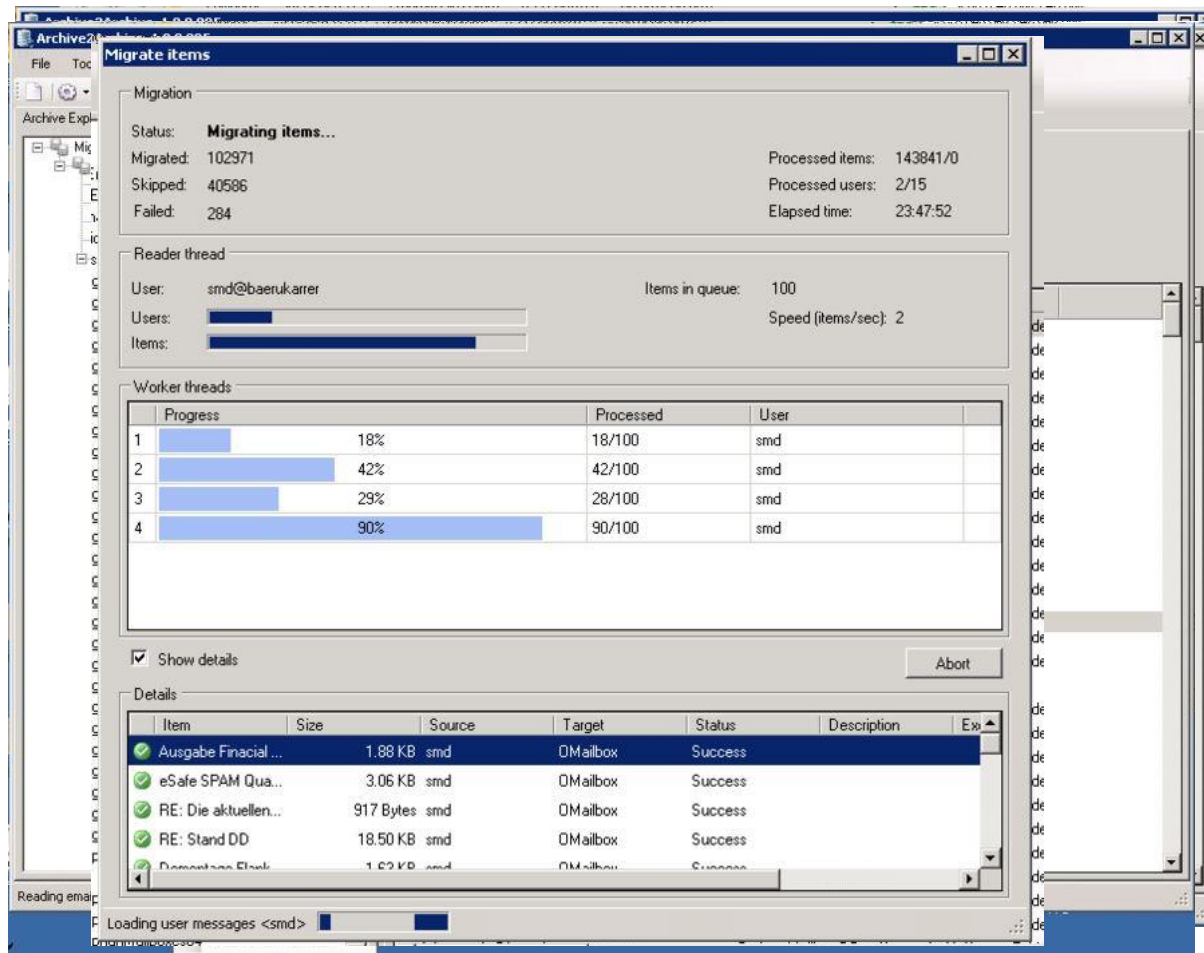
Application overview - Premigration



Application overview - Migration



Application overview – the migration process



DEMO: Migration from legacy archives to O365



EXECUTIVE SUMMARY

Strong product focus

Information management

Cloud Platform and SaaS

Partnerchannel



Migration, collaboration, access and transformation of enterprise data from any source, any time and on any device

Innovative products and solution which are improving your everyday business productivity

One strong **TEAM** for **PARTNERS** and global **CUSTOMERS**

Integration of ECM/DMS/ERP

Office 365 MS Products

Mobility & Access

Strong presence