

EchoMD Agentic AI+

Empowering healthcare professionals
with AI-driven clinical workflow
solutions



Problem Statement



Inconsistent Documentation Quality

Manual note-taking can result in incomplete, inconsistent, or error-prone medical records, impacting patient safety.



Physician Burnout

The overwhelming burden of documentation and administrative tasks leads to fatigue and reduced job satisfaction among healthcare providers.



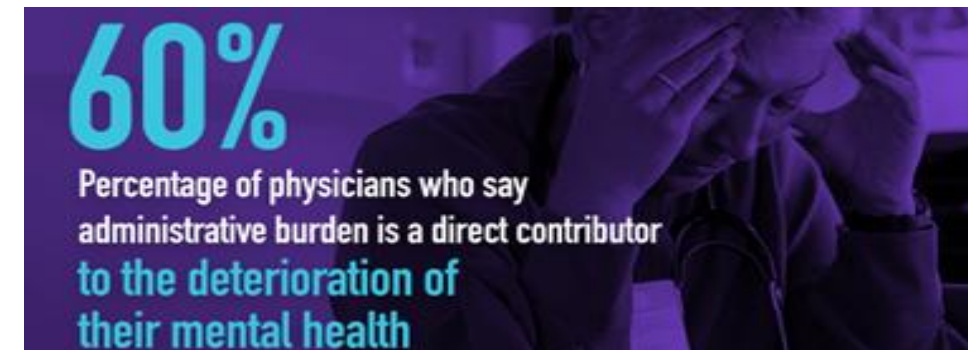
Compliance & Regulations

Ensuring adherence to HIPAA, GDPR, and other healthcare regulations adds complexity and slows down workflows.



Inefficient Resource Utilization

Lack of AI-driven automation leads to underutilization of medical staff and prolonged administrative bottlenecks.



@2025 Metrics from Canadian Medical Association
<https://www.cma.ca/our-focus/administrative-burden/facts>

Problem Statement



Inconsistent Documentation Quality

Manual note-taking can result in incomplete, inconsistent, or error-prone medical records, impacting patient safety.



Physician Burnout

The overwhelming burden of documentation and administrative tasks leads to fatigue and reduced job satisfaction among healthcare providers.



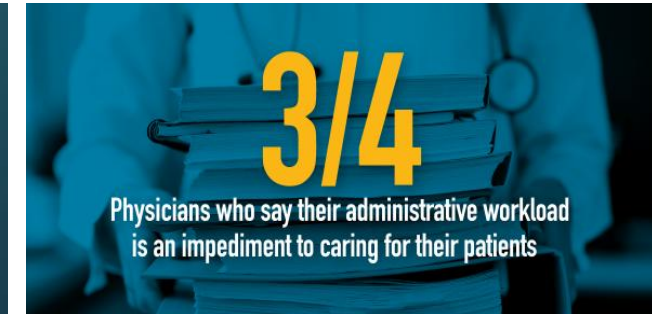
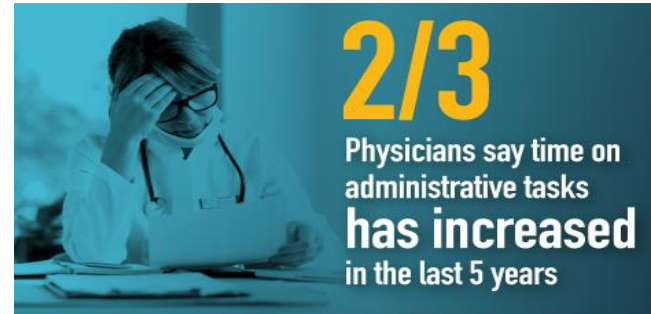
Compliance & Regulations

Ensuring adherence to HIPAA, GDPR, and other healthcare regulations adds complexity and slows down workflows.



Inefficient Resource Utilization

Lack of AI-driven automation leads to underutilization of medical staff and prolonged administrative bottlenecks.



@2025 Metrics from Canadian Medical Association
<https://www.cma.ca/our-focus/administrative-burden/facts>

Benefits to Healthcare Organizations



Improved Access

Agentic AI can automate labor-intensive processes, including patient triaging, scheduling, and claims management, enabling healthcare professionals to dedicate more time to clinical care.



Personalized Patient Care

By analyzing extensive datasets, agentic AI can recommend bespoke treatment plans, anticipate potential complications, and support preventative care initiatives.



Enhanced Diagnostics

With its ability to process and interpret medical imaging, lab results, and patient histories, agentic AI can significantly improve diagnostic accuracy and minimize errors.



Resource Optimization

From managing bed occupancy to ensuring the timely replenishment of supplies, agentic AI helps healthcare organizations make the most of their resources

EchoMD Clinical Workflow



AI-enabled system

records doctor-patient interactions in real-time, ensuring no critical details are missed.



Advanced Natural Language Processing

and AI algorithms analyze and structure conversation data into meaningful insights



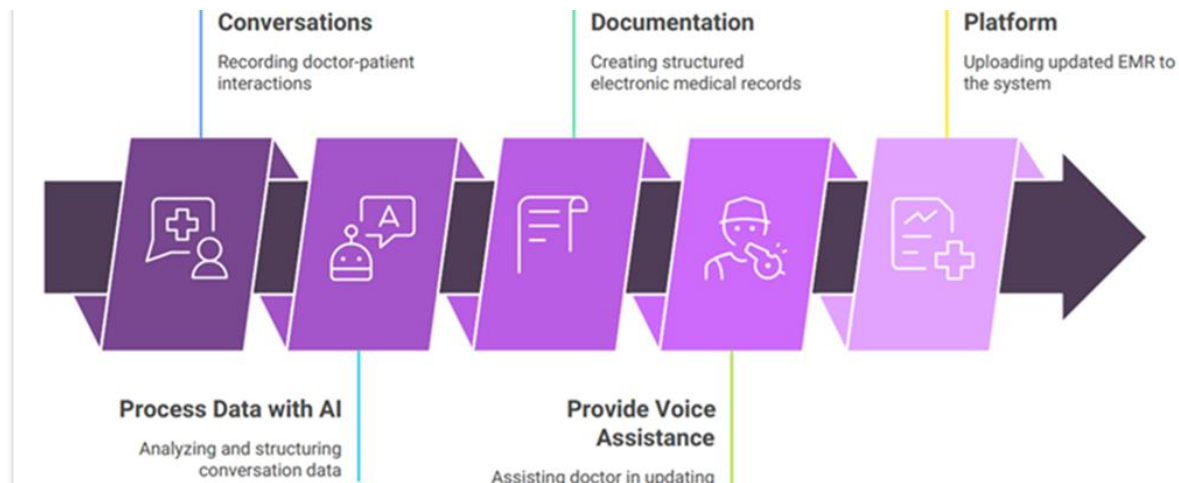
Documentation and EMR Records

AI automatically creates structured, accurate, and standardized electronic medical records (EMRs), reducing manual effort.



Voice Commands

Physicians can leverage voice commands to update or modify EMRs seamlessly, improving efficiency and reducing screen time.



Seamless Integrations with all major EHR Systems



Pre-Built Connectors

We offer pre-built connectors for all major EMR systems, eliminating the need for custom configurations.



Streamlined Process

Our team handles the technical aspects of the integration, minimizing your IT involvement.



Fast and easy setup

Get up and running with EchoMD quickly and efficiently, allowing you to focus on patient care.





30%

Productivity Increase

How Agentic AI works



Perception

Agentic AI gathers and analyses data from diverse sources, such as electronic health records (EHRs), IoT-enabled medical devices, and diagnostic imaging systems.



Decision-Making

Using sophisticated predictive models, it evaluates potential courses of action, weighing probabilities, risks, and anticipated outcomes.



Action

The system autonomously implements decisions and learns from the results, continually refining its performance over time.

How EchoMD Agents work

Agentic AI Platform

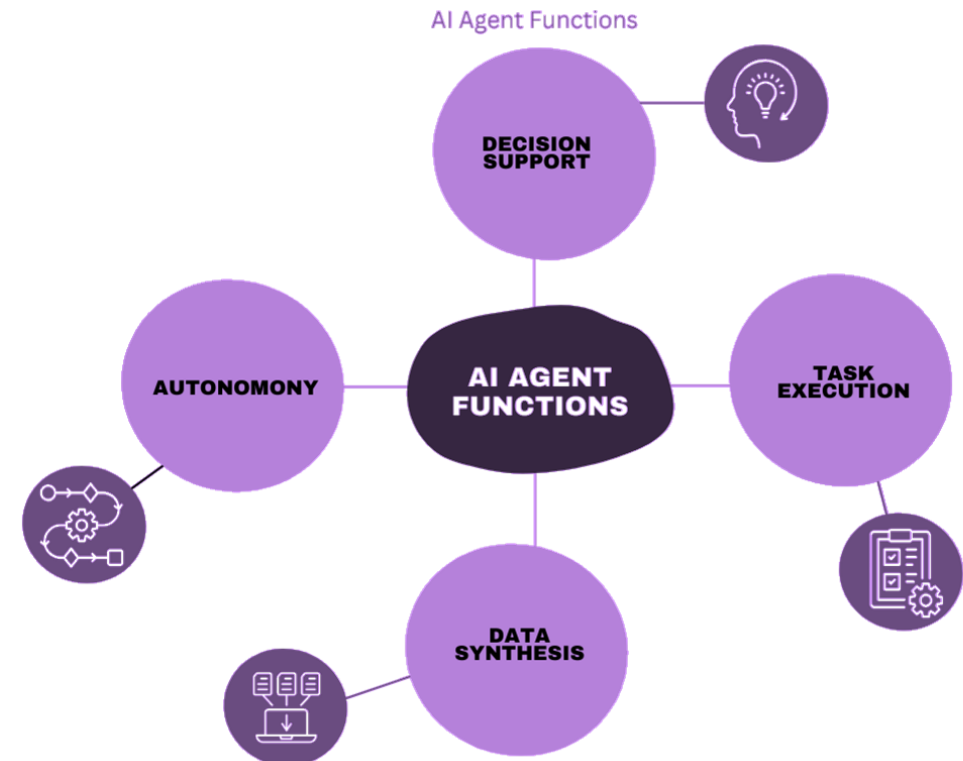
While traditional AI is often designed for specific tasks, agents in EchoMD Agentic AI act independently, operating across processes to reduce manual workload and alleviate data fragmentation.

Seamless Integration

The platform seamlessly integrates with existing Electronic Health Record (EHR) systems, enabling a streamlined workflow and eliminating the need for manual data entry.

Secure Data Management

EchoMD prioritizes patient data security and privacy, with robust encryption and compliance measures to protect sensitive information.



Thank You

contact@echomd.ai