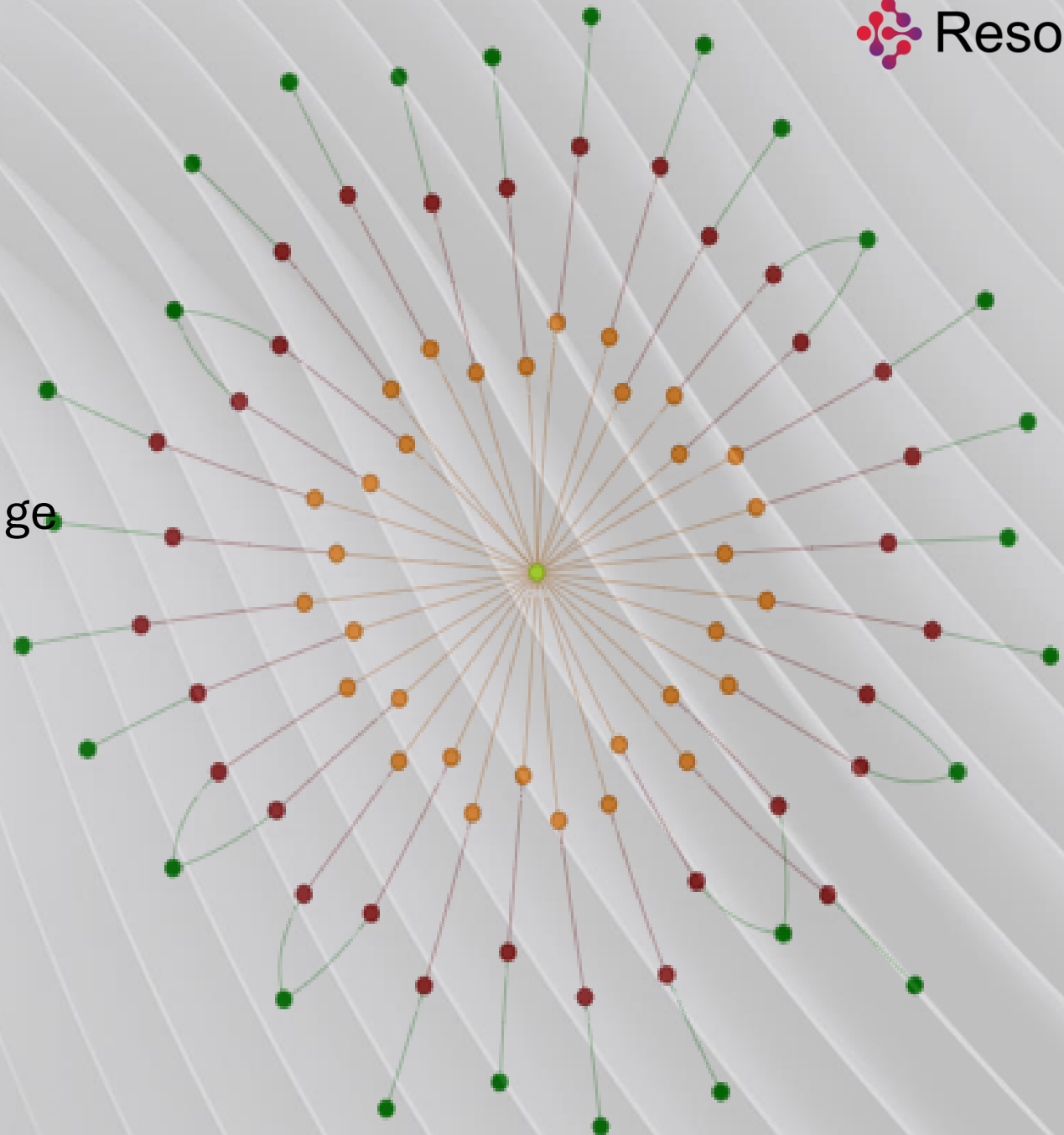


ResolveR - Extract, Combine, Match and Manage



Key Business Challenges and Asks

Fragmented and inconsistent data across multiple systems and sources

Inefficient data matching and deduplication processes leading to duplicate and inconsistent data

Difficulty in establishing a single source of truth for critical data entities

Inability to proactively monitor and address data quality issues

Traceability of the golden Records

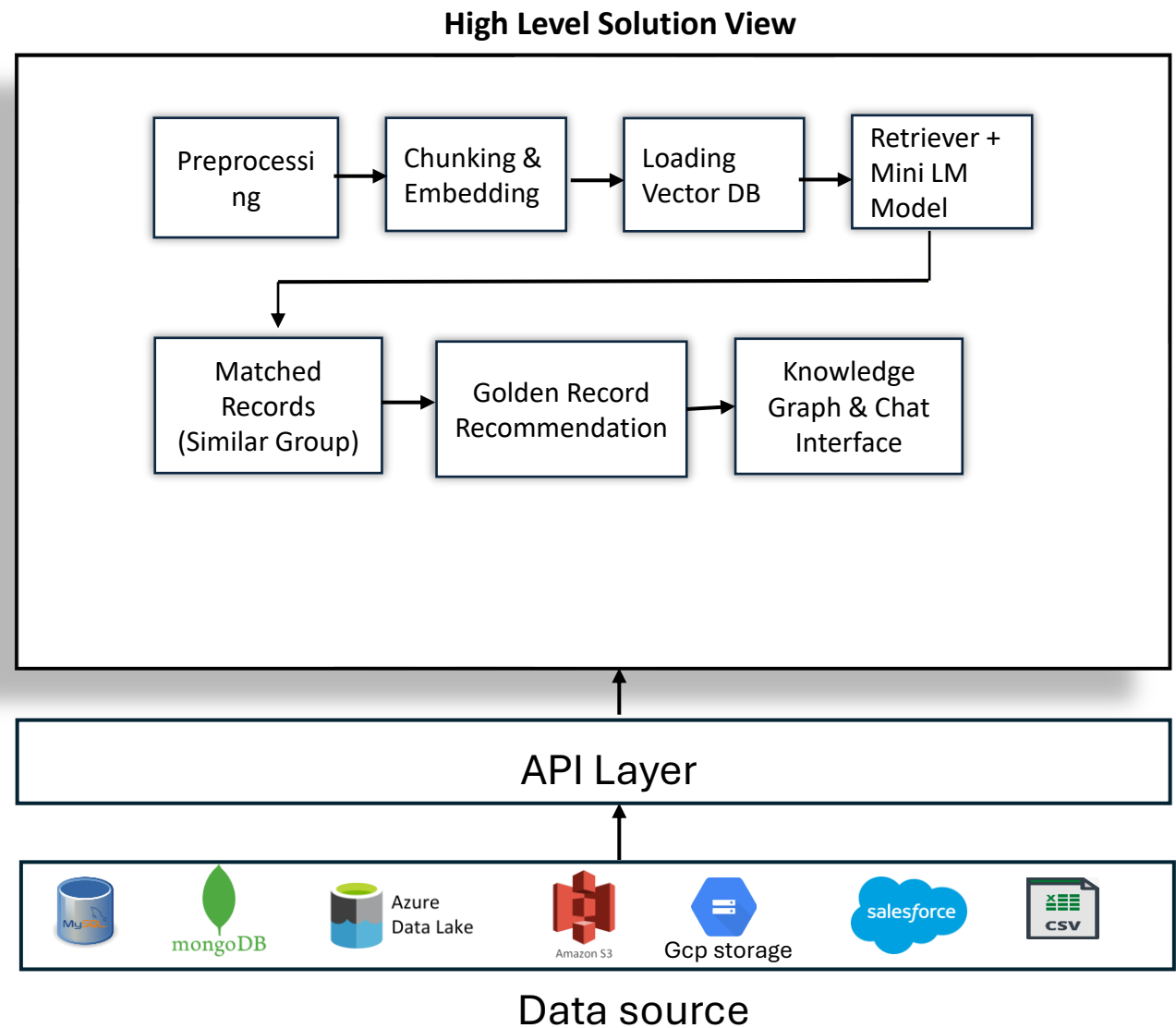
Complex process for searching records and enabling data discovery

Support of multi-tenant projects for entity resolutions

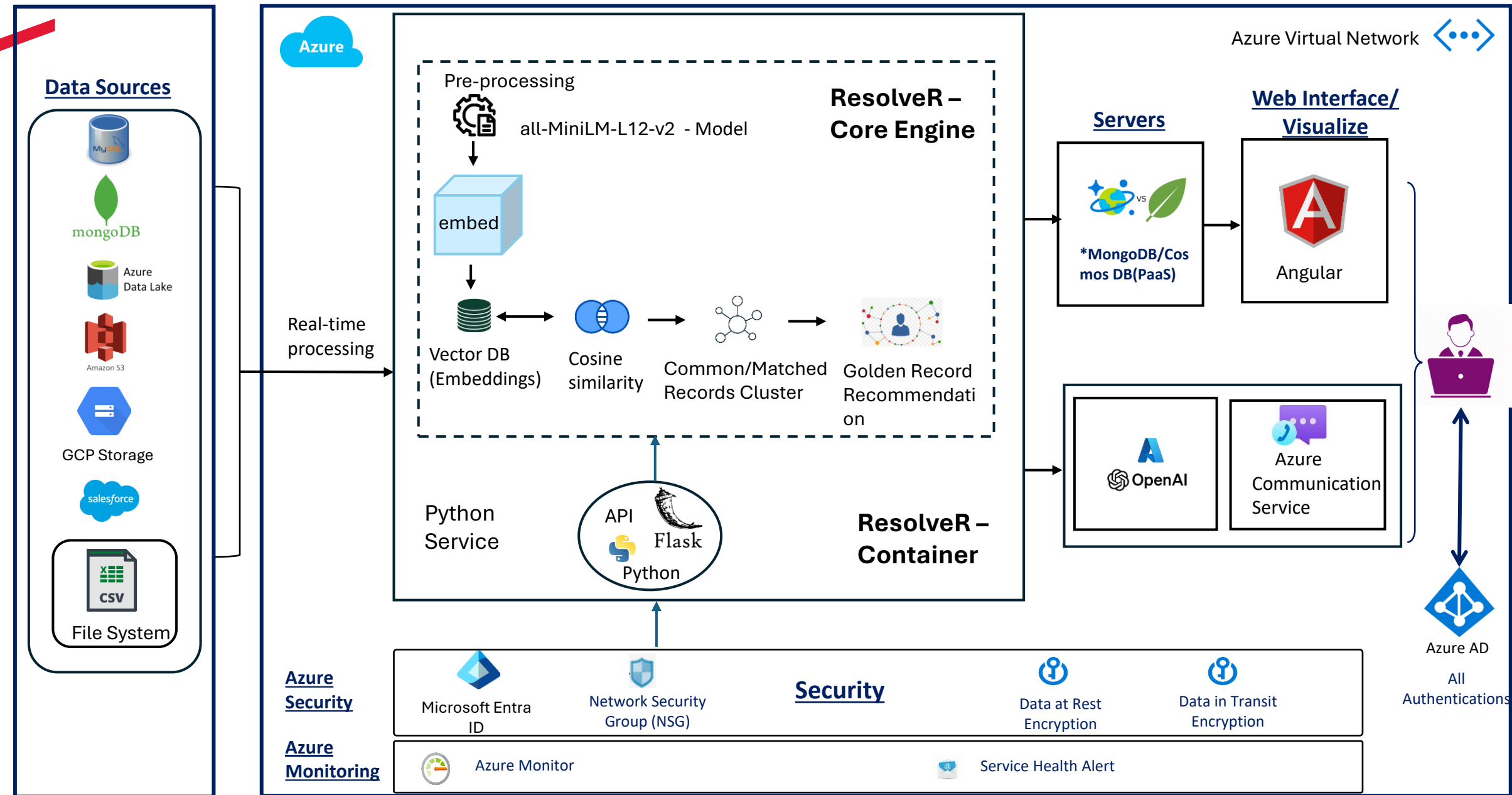
Maintaining history and tracking performance report

Solution Approach

A comprehensive strategy leveraging data integration, matching AI-ML algorithms, and Generative AI to accurately resolve entities, ensure data consistency, and improve golden records traceability across multiple sources



ResolveR on Azure - Solution Architecture



Solution Features

Gen AI based potential column match recommendation

Data profile to reflect null % for match column selection

Configurable weightages and threshold % for AI match algorithm

Golden records recommendation for individual records across sources

Standardizing the attributes (Combine/Unify)

Knowledge graph for golden records traceability

LLM based Chat interface

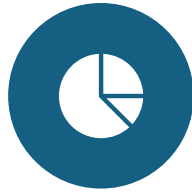
Store golden records recommendation & performance trend

Support for multiple database with pre-built adaptors

Solution Benefits



Minimize errors from duplicate or inaccurate data



Golden record recommendations to drive data driven decision-making



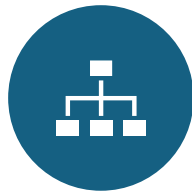
Faster time to market for entity resolution



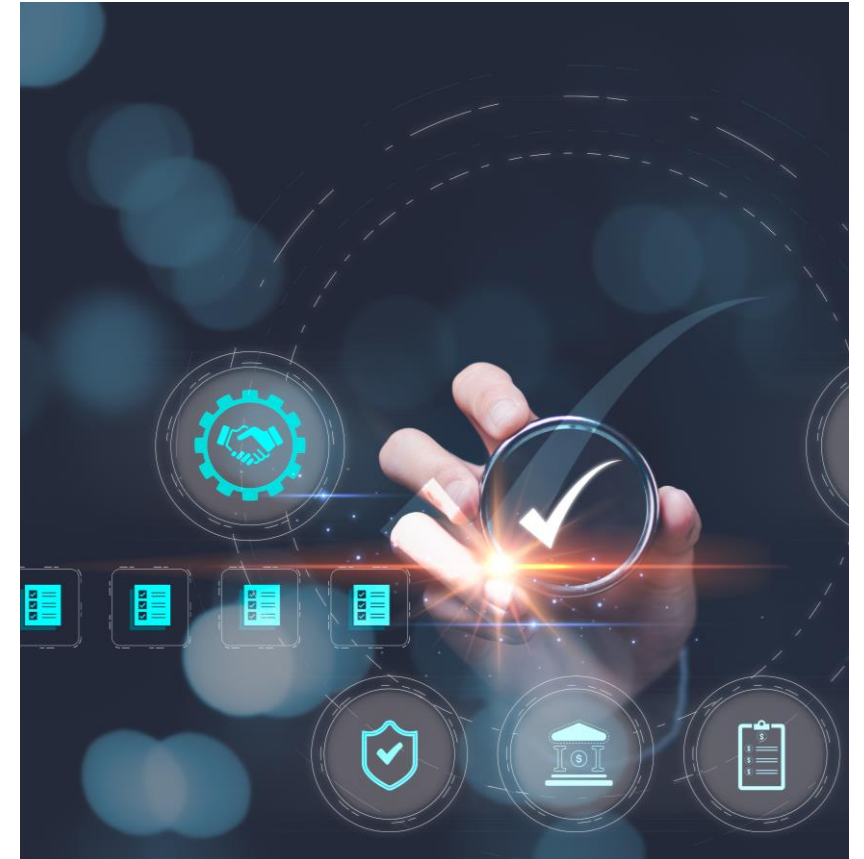
Harmonize records across systems for reliable operations



Better 360-degree customer/product/supplier views



Access to accurate, consolidated records



TECH

mahindra