

DHW Marketplace Global Cloud Solutions



DWH Marketplace – Offering Description

In an era where the line between structured and unstructured data blurs, and data infrastructure forms a mosaic of operational systems, the need for a modern, unified solution is crucial. As data volumes surge, existing infrastructures strain under demand. We are here to transform your data management challenges into a harmonious symphony of insights. Harnessing the power of Microsoft Azure, we craft a contemporary data warehouse tailored to your needs, unlocking the full potential of your data assets. Say goodbye to data fragmentation and embrace a future where your data stands as your most valuable asset—meticulously organized and ready to empower your business.



Consultancy



Implementation

Prepare for an exciting voyage as we set sail towards transforming our clients' Data Warehouse infrastructure into the Azure realm. Our compass is set to scale new heights, adapt with unparalleled flexibility, and operate with unprecedented efficiency. We're here to guide our customers on this exhilarating journey through Azure's rich tapestry of services. Join us on this extraordinary odyssey as we reimagine your data horizon and unlock the boundless potential of Azure, all with the backdrop of our extensive experience, promising a future brimming with data-driven brilliance.

Concise Overview Of Product

Transform your data infrastructure with ease using our Azure Marketplace product. We specialize in crafting robust data warehouse environments tailored to your specifications. Here's what we offer:

1. **Streamlined Data Warehouse Creation:** Build your foundation with pre-configured templates.
 2. **Security and Scalability:** We ensure your environment is secure and scales to your exact needs, all based on your unique requirements.
 3. **Customization Made Easy:** Our Azure Marketplace product offers multiple implementation options with pre-set configurations.
 4. **Effortless Deployment:** Say goodbye to complex setups. With preconfigured ARM templates, you can deploy a secure, reliable, and scalable Data Warehouse with a single click.
 5. **Rapid Results:** Expect your project to be up and running within four weeks, minimizing downtime.
 6. **Cost Optimization:** Azure costs are tailored to your resource requirements, ensuring you pay only for what you need.
- Choose us for a hassle-free journey towards a secure, reliable, and scalable Data Warehouse environment on Azure.

DWH Marketplace – Timeline

Week 1

- Gather data requirements and sources
- Designing infrastructure and security requirements
 - Design networking
 - Cost estimation

Week 2

- Deploy required infrastructure
- Create security measurements and policies
- Put in place connectivity

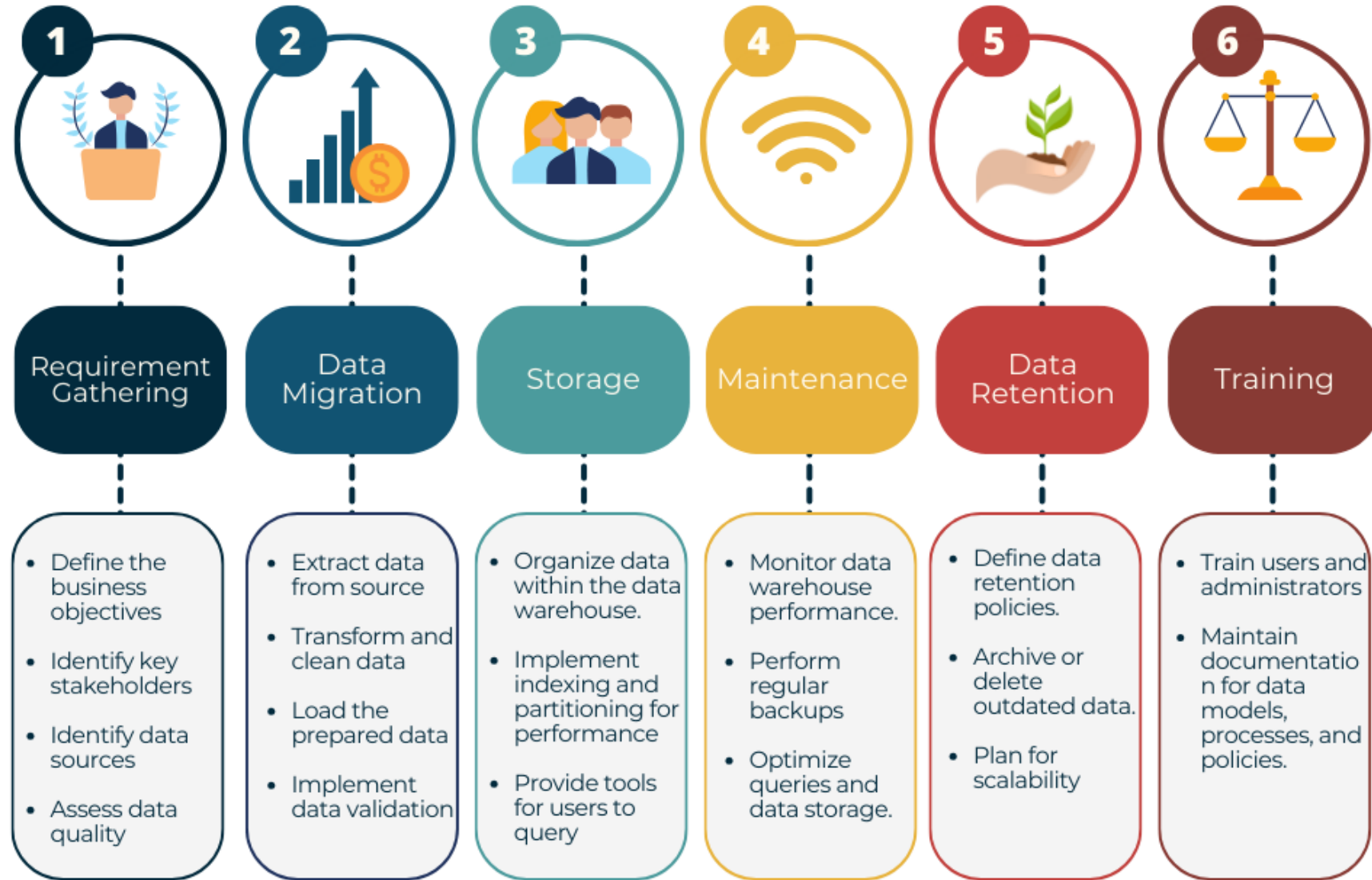
Week 3

- Setup user access controls
 - Follow up data transformation and data load process

Week 4

- Tune up performance.
 - Follow up testing.
- Prepare Documentation

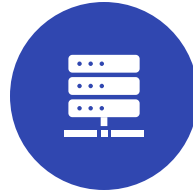
DWH Marketplace – Timeline



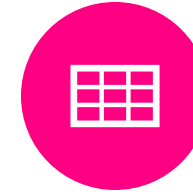
DWH Marketplace – Deliverables



Data Blueprint Document:
Defining the project's scope, data origins, and business objectives.



Data Structure Design: Crafting the data warehouse architecture, encompassing dimensions, facts, and their interconnections.



Data Integration Pipelines:
Formulating Extract, Transform, Load (ETL) workflows to migrate, cleanse, and reshape data for DWH integration.



Data Ingestion and Quality Assurance: Safeguarding the DWH by ensuring accurate and high-quality data loading.



Interactive Dashboards and Insightful Reports: Constructing visual data representations and reports that unearth valuable insights from the DWH.



Performance Enhancement: Fine-tuning the DWH for optimal query responsiveness and efficiency.



Comprehensive Documentation:
Supplying thorough project documentation, inclusive of schemas, procedures, and best practice guidelines.

DWH Marketplace – Motivation to migrate

- 1. Scalability:** Azure Data Warehouse empowers you to effortlessly adjust your computing resources in response to your needs. Say goodbye to concerns about hardware constraints and performance bottlenecks; with Azure, you can seamlessly accommodate expanding data volumes and processing demands.
- 2. Cost Efficiency:** Traditional local databases often involve hefty upfront investments in hardware and ongoing maintenance expenses. Azure Data Warehouse introduces a flexible pay-as-you-go pricing model, meaning you only pay for the resources you actually use. This cost adaptability can translate into substantial savings, especially for enterprises with fluctuating data processing requirements.
- 3. Performance:** Azure Data Warehouse is engineered to efficiently handle substantial data loads and complex queries. By transitioning to Azure DWH, you harness the power of its distributed architecture and columnar storage, unlocking quicker query execution times and an overall performance boost.
- 4. Seamless Azure Integration:** Azure Data Warehouse seamlessly harmonizes with other Azure services like Azure Data Factory, Azure Analysis Services, and Power BI. This integration streamlines your data pipeline, enhances your analytical capabilities, and elevates data visualization for your business intelligence endeavors.
- 5. Reliable High Availability and Disaster Recovery:** Azure delivers robust data redundancy and disaster recovery options. Migrating to Azure DWH ensures your data's constant availability and fortifies it against potential data loss. Your data remains protected and accessible, come what may.

DWH Marketplace – Motivation to Migrate (Cont..)

6. Security and Compliance Assurance: Azure Data Warehouse provides formidable security features encompassing encryption, access control, and industry-recognized compliance certifications like ISO, SOC, and GDPR. Transitioning to Azure DWH fortifies your data security stance and helps you meet specialized regulatory requirements tailored to your industry.

7. Data Transformation and ETL Empowerment: Azure DWH facilitates diverse data transformation capabilities, including the likes of PolyBase and T-SQL. This simplifies Extract, Transform, Load (ETL) tasks and data integration, empowering you to manage these operations with ease.

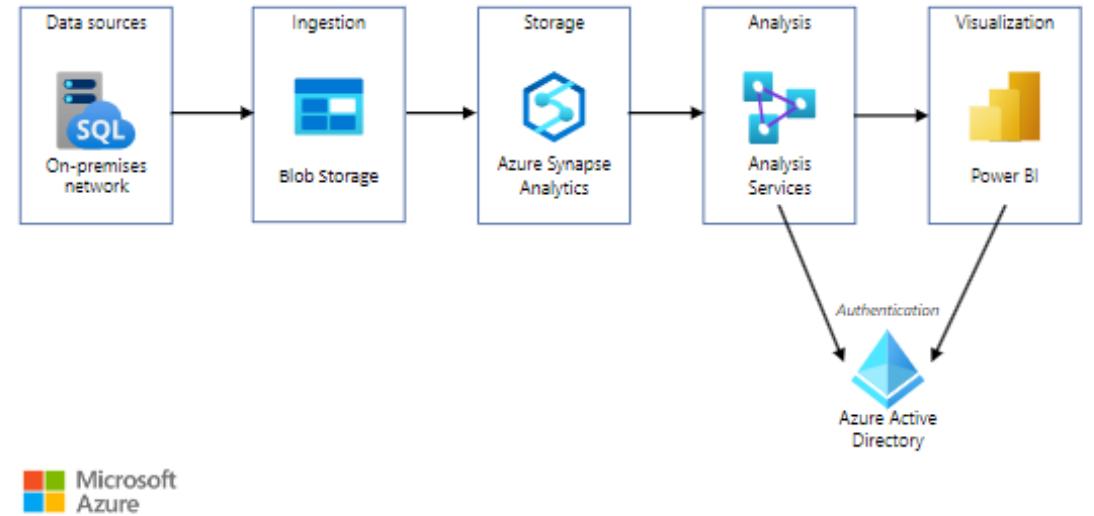
8. Streamlined Maintenance: Shifting to Azure DWH transfers the onus of infrastructure maintenance to Microsoft. This liberates your IT team from the burdens of hardware and database upkeep, allowing them to dedicate their efforts to value-added endeavors.

9. Global Accessibility: With Azure Data Centers strategically dispersed worldwide, you gain the ability to store and process data closer to your users or in alignment with data residency regulations. It's global data reach at your fingertips.

10. Future-Proofing Your Data: Azure DWH is poised to evolve alongside cloud technology, continuously receiving updates and enhancements to remain at the forefront of progress. Migrating to Azure DWH assures that your data infrastructure remains contemporary and adaptable to the ever-evolving landscape of data processing needs.

DWH Marketplace – Templates

Basic Template



DWH Marketplace – Templates

Enterprise Template

