



AMG 365 - Accelerating Modern Workplace Adoption & Compliance

About Data Pros

For 15+ years, Data Pros has been delivering Microsoft technology solutions to local SMBs in search of reliable, secure, and professional technology support. Whether they're looking to outsource their IT functions, augment their existing staff, or benefit from our specialized Microsoft expertise, Data Pros customers gain access to best-in-class technology – delivered by a Certified Team.

What we offer: **AMG 365**

Data Pros offers a new method of Support for SMBs using the Microsoft Cloud platform. Our unique offering has a focus on Adoption, Management, and Governance. *AMG 365* allows customers to develop solutions that help them **save money** and **do more with less** by working alongside certified Microsoft engineers.

Adoption of new technology requires experienced professionals to implement and certified professionals to support. *AMG 365* helps customers transition to (and embrace) these new technologies by guiding them in all aspects of their cloud journey.

This one-of-a-kind support service also includes all the security, change management, and governance reporting that SMB's need. Beginning with your scorecard, through your migrations, to ongoing operations and support, *AMG 365* is with you throughout. Whether its Azure, Dynamics, Microsoft 365, Power Automate, or Power BI, *AMG 365* is the solution

See what customers are saying:

The adoption of the Microsoft 365 platform has allowed our organization to not only grow, but scale. Since we are spread out across the country, it is crucial that we have consistency of software, the ability to collaborate, and centralized help. Data Pros and Microsoft 365 give us that.

–Raymond Nafash, CFO, Ivy Realty

Data Pros

<https://www.the-data-pros.net/> | info@the-data-pros.net | 732-772-1577

[See our offer on the Microsoft Commercial Marketplace](#)



Why **AMG 365**

What does **AMG** stand for?

AMG is a one-of-a-kind Microsoft support offering focused on improving the Adoption, Management, and Governance of your Microsoft 365 environment. Every organization uses Microsoft! But only 22% of organizations take full advantage of its most critical features. With **AMG 365**, our Certified Microsoft Engineers will help your team adopt the platform to build a more productive and secure environment.

Adoption & Training

Did you know 66-75% of IT initiatives fail? That's because the ability to manage change translates directly into the ability to adopt new technology. **AMG 365** provides the support and training that ensures your initiatives are a success. **AMG 365's** Adoption & Training portal provides end users with a guided roadmap. The interactive learning portal enables them to adopt change and be more efficient at their job.

Expert Operations

Managing the **15+** admin centers within Microsoft 365 can be a daunting task for anyone. Proper management of your organizations Microsoft environment is important for monetary and security reasons. Let our team develop automated approval and change management systems within your environment to keep everything in check!

Compliance, Governance & Security

We all know the complexities behind compliance, that's where our Governance support comes to the rescue. FINRA, NIST, HIPAA, PHI, PCI, CMMC, GDPR, SOX, etc. are all regulations our team can help govern for you. With automated alerting, remediation, and response, **AMG 365** has you covered!

Data Pros

<https://www.the-data-pros.net/> | info@the-data-pros.net | 732-772-1577

[See our offer on the Microsoft Commercial Marketplace](#)

Key use cases



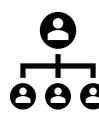
Save your company money

Get rid of Shadow IT! Our goal is to help you do more with less. Consolidate your IT under one umbrella and trust one provider to manage it all for you!



Scale your business quickly and flexibly

Augment your team with a group of certified Microsoft professionals that can help improve efficiency and streamline workflows.



Simplified IT management

Reduce headaches by reducing your IT infrastructure.



Technical support

Your **AMG** offering comes with support from a global network of experts, certified in M365 and Azure.



Compliance and Security

Secure your business like you secure your home with next-gen Microsoft security and compliance services.



Data Pros **AMG 365** is a subscription-based support service that brings together the best tools and the best people to operate them. By combining best-in-class apps with powerful cloud support, **AMG** can help your business save money, time, and stay secure and compliant.

Learn more at

<https://www.the-data-pros.net/>