



Extract data from engineering drawings and documents to enable your enterprise asset management journey.



## The Problem

Overcoming Complex Data Extraction from Engineering Documentation.



Manual Data Extraction



Unstructured Data Complexity



Limitations of Traditional Methods

## Solution

Hybrid AI: Fusing Computer Vision and Deep Learning for Unparalleled Precision.



### What is the Hybrid approach?

Multi-Stage Data Extraction starts with image processing and includes text refinement and outputs the data in a format of your choice

## Benefits

How DREX has helped existing clients?



### Asset Management

Metadata Enrichments will enable enterprise initiatives including Digital Twins, Asset Registry, Asset Performance Management (APM), Predictive Maintenance, Reliability Centric Management (RCM).



### Reduced Turnaround

Combine and reduce legacy data to better manage enterprise owned assets. DREX helps enrich the "single source of truth"



### Integration Capability

The output is configurable anywhere from excel, SQL to PowerBI integration providing new insight from existing data. Additionally, DREX offers API endpoints for seamless integration into customer ecosystems.



### Support ERM Platforms

Extract and compile safety critical data for regular compliance check by providing inputs to Enterprise Risk Management (ERM) of choice.



### Enable Industry 4.0

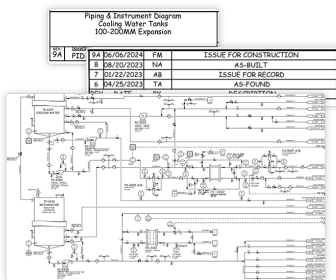
Our tool seamlessly integrates with ERP systems, supporting Industry 4.0 objectives. It aims to automate key processes like BOM updates, inventory management, and production scheduling, paving the way for agile, data-driven decision-making.



### Training Time

Minimal time is required to train DREX on a dataset of your choice.

## Features



Latest Revision						
Title	Drawing Number	Project Number	Revision Number	Tag		
Cooling Water Tanks 100-200MM Expansion Piping & Instrument Diagram	PIE123-J-1	MEEDCS	SA	View Asset Information		

Asset Information						
Drawing No.	Type	Equipment Class	Description	Commonality Code	Sequence No.	Tag
1	RO200-01-1	Level Tag	Instrumentation	Pressure - Instrument Level	PL	02
2	RO200-01-1	Level Tag	Instrumentation	Temperature - Instrument Level	TI	02
3	RO200-01-1	Level Tag	Instrumentation	Temperature - Relief Valve	PIV	03
4	RO200-01-1	Level Tag	Instrumentation	Temperature - Instrument Level	TI	04
5	RO200-01-1	Level Tag	Instrumentation	Signal - Control Governor Valve	SV	05
6	RO200-01-1	Level Tag	Instrumentation	Pressure - Instrument Level	PI	06
7	RO200-01-1	Level Tag	Instrumentation	Pressure - Relief Valve	PIV	07
8	RO200-01-1	Level Tag	Instrumentation	Pressure - Instrument Level	PI	08
9	RO200-01-1	Level Tag	Instrumentation	Pressure - Instrument Level	PI	09
10	RO200-01-1	Level Tag	Instrumentation	Flow - Transmitter	FT	02

### Title Grid

- Drawing Title
- Drawing Number
- Current Revision Number
- Facility/Plant/Unit

### Revision Grid

- Revision details
- Project
- Revision Description
- Revision Dates
- Drafted by

### Asset Information

- Symbology Reporting
- Piping Tags
- Instrumentation Tags
- Electrical Tags
- Customized Outputs

### Relationships

- Enable metadata rich solutions
- Document to Asset
- Parent - Child Relationships
- Document to Document
- Asset to Asset

## Success Stories



### Refinery Client

Over **10,000+** hours saved

Processed approximately 10,000 drawings.



### Pipeline Client

Over **10,000+** hours saved

Processed 15,000 files and provided 9,000 previously undiscovered asset information.



### Terminal Client

Over **3,000+** hours saved

Extracted data for over 6,000 drawings



### Logistic Client

Over **5,000+** hours saved

Processed 8,000 files and provided 15,000 previously undiscovered asset information.