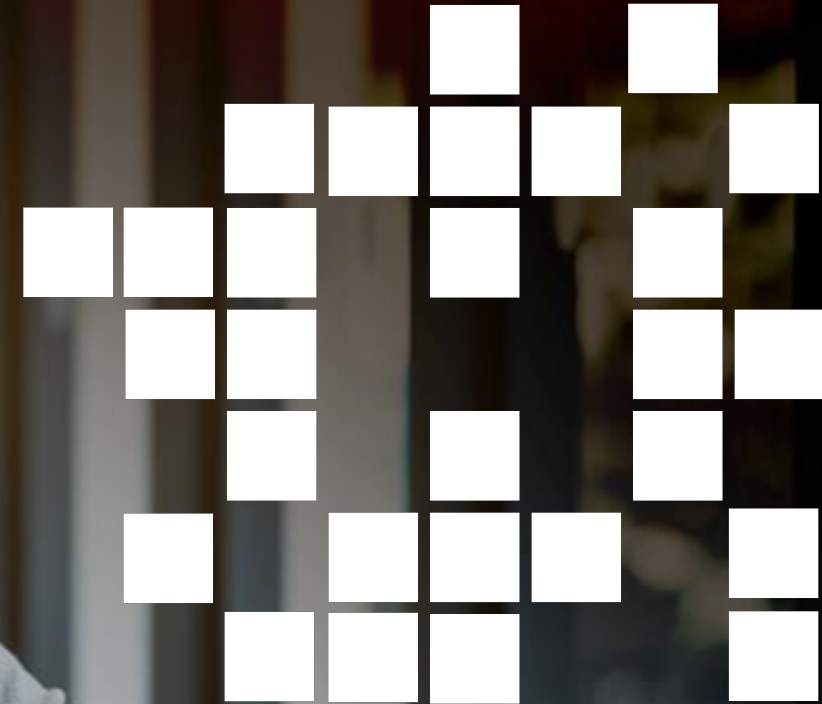
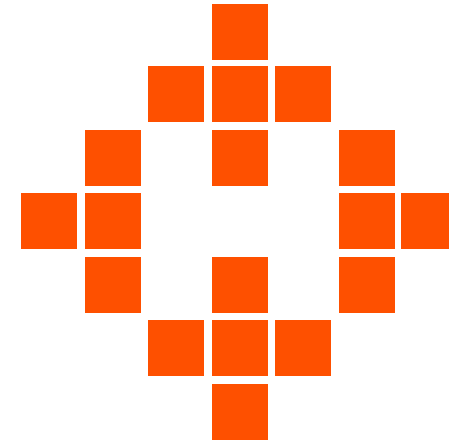


HealthEM.AI






HealthEM.AI is a mission-driven data platform company dedicated to improving care delivery. To achieve this, we simplify patient data from all points of care and apply AI/ML-based predictive analytics to empower healthcare organizations with actionable insights leaders and clinicians. We ensure clinicians and healthcare organizations take the right actions to enhance patient health and optimize cost.



HealthEM.AI Offerings

1


SDoH Risk Model



Derives insights on health and well-being based on social determinants of health (conditions in which a person is born, grows, lives and works).

2

Hospital Admission Risk Model



Identifies which members in a population are most likely to be admitted to the hospital in the next 12 months.

3

Predicted Cost Model



Predicts the development of a patient's healthcare costs over the next year and analyzes the factors that influence this prediction.

4

Readmission Risk Model



Identifies which patients are most likely to be readmitted following a stay in the hospital.

5


Member Retention Model



Identifies key drivers for retaining the existing population and targets promotions to sustain market share.

6

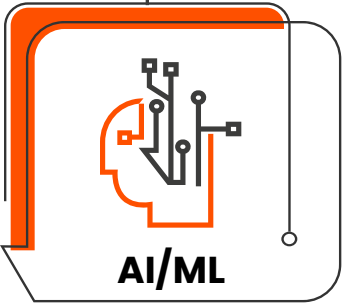
ER Events Risk Score



Helps in the early detection of patients who are likely to have an emergency room visit or hospitalization in the next 12 months.



Potential Market Differentiators



AI/ML models with better accuracy than industry standards (**2-4x higher**).



Cost-effective pricing models for small and medium-sized health plans.



Integrated library of modules with chronic models to support informed clinical decisions.



Flexible delivery models and integration with **EMR, HL7**, APIs and custom applications.



Cloud-enabled technology for faster and scalable deployment of solutions.



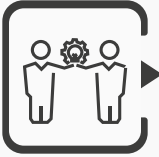
Focus Areas



Medicare Advantage Plans



Provider Groups



Commercial Contracts



Specialty Services



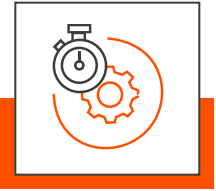
Improving Population Health Management

Revamping Operations

Strengthening Innovation



Model Framework



MODEL ACCURACY



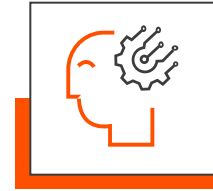
- » Track model prediction accuracy via a selection of metrics - (RMSE, MAPE, Precision, F1 Score, etc.)
- » Track model execution errors
- » Helps in validating the correctness of model predictions



DATA DRIFTS



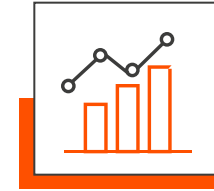
- » Analysis of data and model drift with auto-triggered alerts
- » Discover changes in data distribution that can potentially lead to model degradation
- » Helps in validating the correctness of model predictions



EXPLAINABLE AI



- » Explainable AI visualizes predictions for better understanding
- » Builds trust in the model with its users
- » Explains model output down to a single prediction



PROVENANCE GRAPH

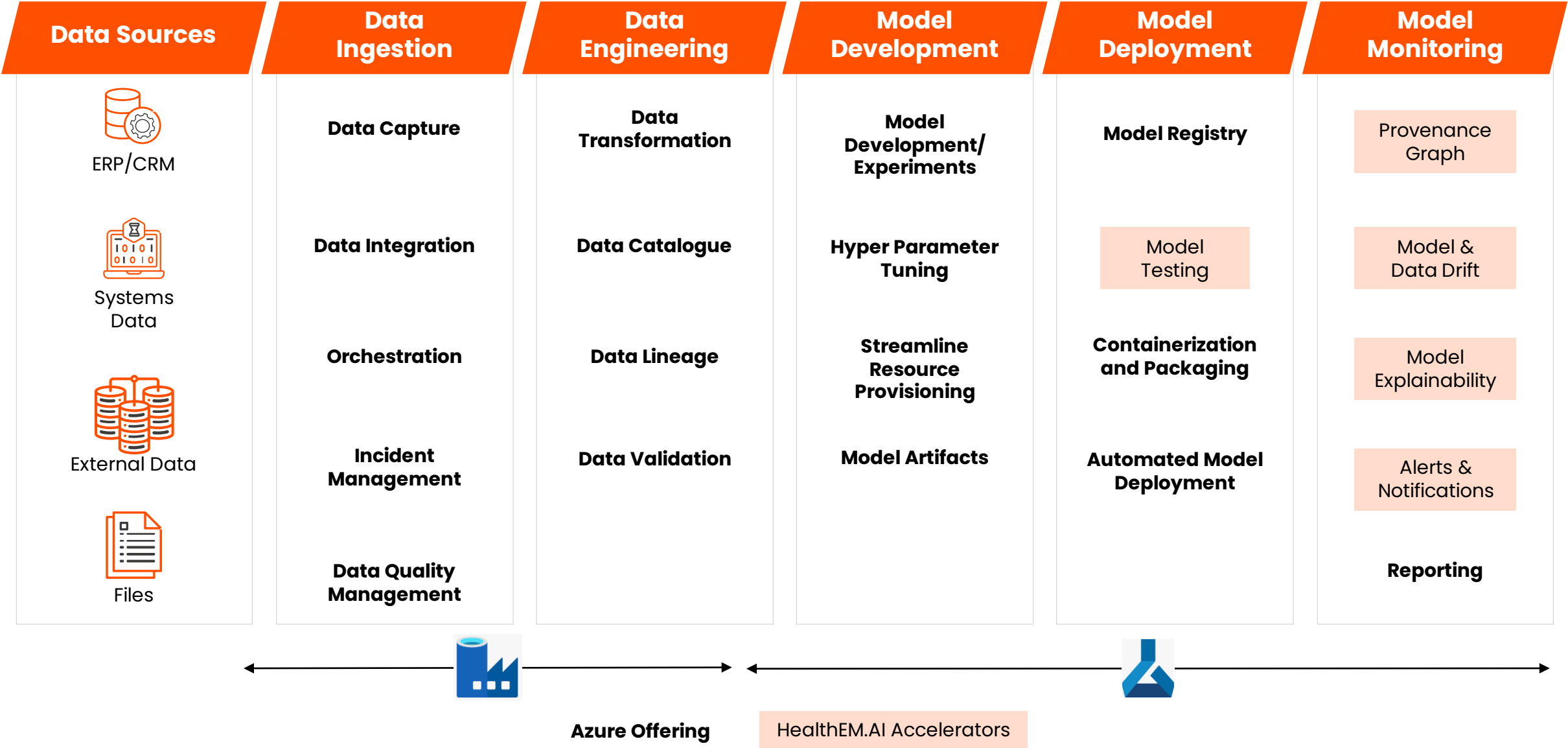


- » Visual graphs provide end-to-end visibility and traceability for model execution
- » Expedites root cause identification of production issues
- » Reduces dependency on DS/DE teams for production support



Azure Platform

Tredence Solution Support



Data & Insights Healthcare Platform: **Capability Architecture**

Solution Delivery

Front End Provisioning

- » Front End Development
- » Analytical Report Development
- » Front End Interaction (User Interface)
- » Front End Interaction (API, etc.)

Logic and AI/ML Provisioning

- » Logic Development
- » Logic Assembly Pipeline
- » AI/ML Model Development
- » AI/ML Feature and Scoring

Data Management

Data Provisioning

- » Data Model
- » Data Storage
- » Data Quality
- » Data Catalog and API Interaction

Data Source Gathering

- » Data Source (File based)
- » Data Source (Relational DB)
- » Data Source (API based)
- » Data Source (Other/Stream/Batch)

Platform Foundation

Security/Compliance

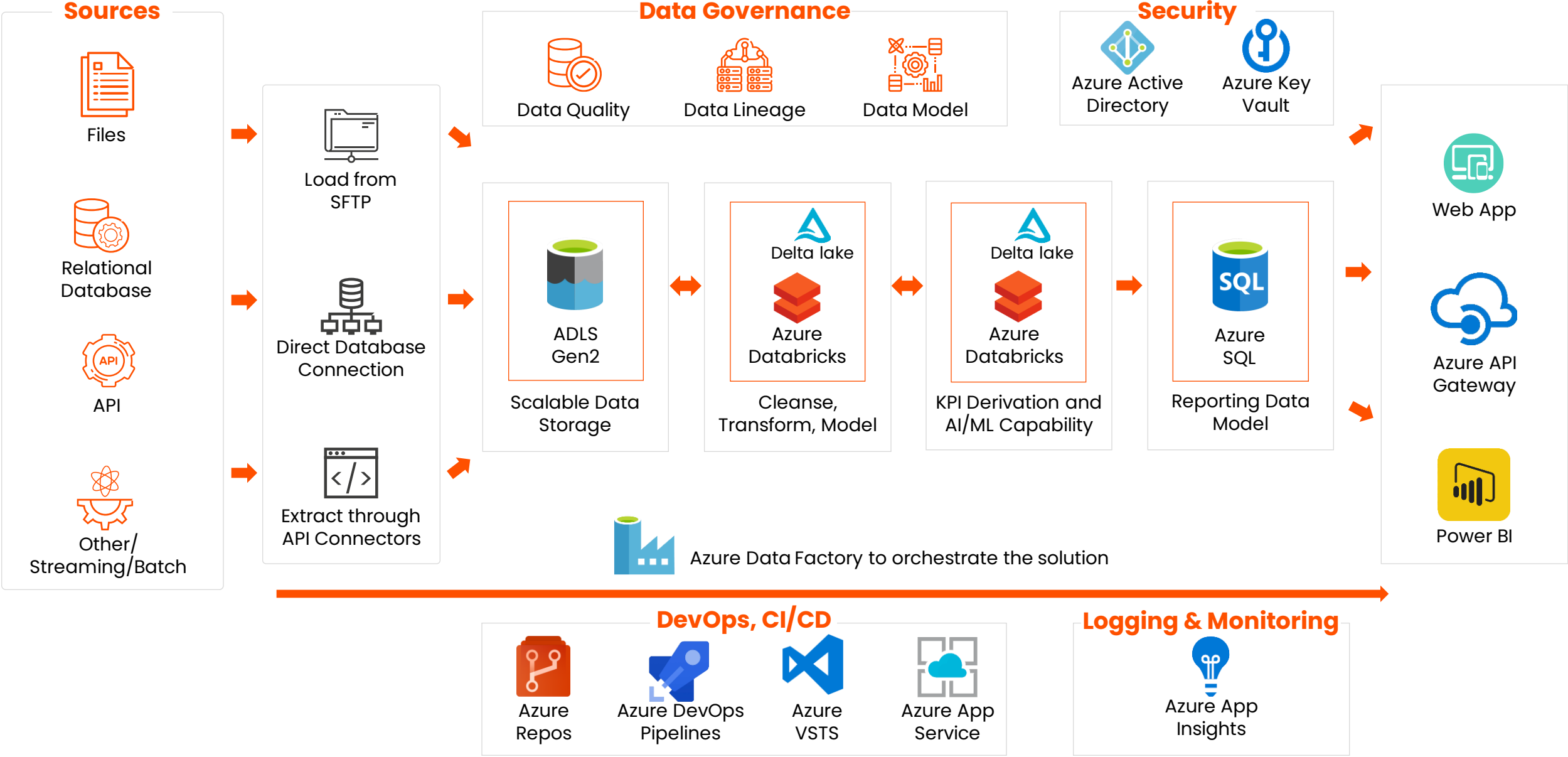
- » Identity and Access Management
- » Encryption (Data at Rest and Motion)
- » Customer Isolation
- » Legal and Regulatory Compliance
- » Data Lineage
- » Data Preservation and Archive

IT Governance

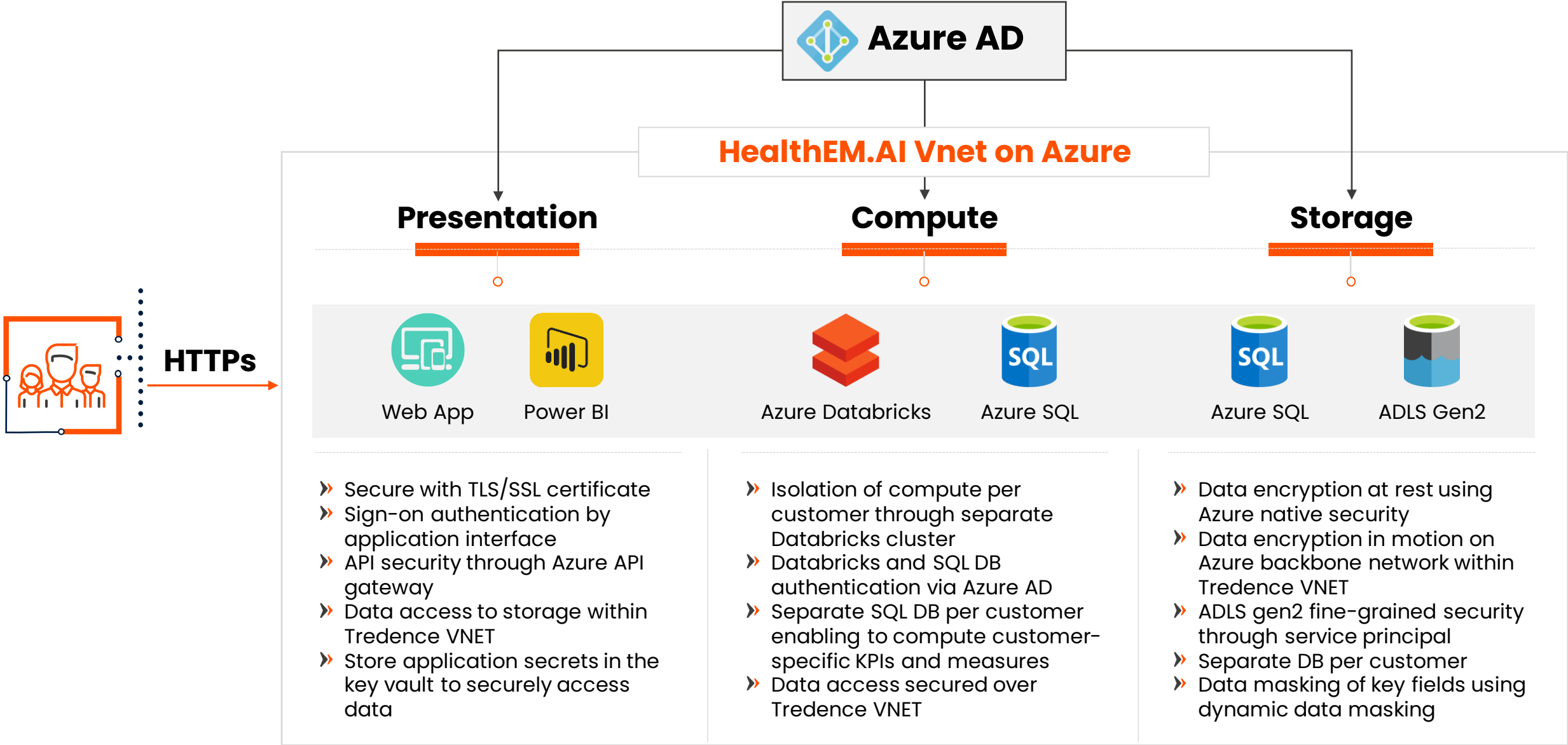
- » Subscription Management
- » Software Code Repository Management
- » System Monitoring
- » Automated Code Deployment (CI/CD)
- » User Support
- » AI Model Drift Tracking
- » API Management
- » Job Scheduling
- » Alert and Notification
- » Issue Tracking and Identification
- » People Collaboration
- » Continuous Improvement and SLA Tracking



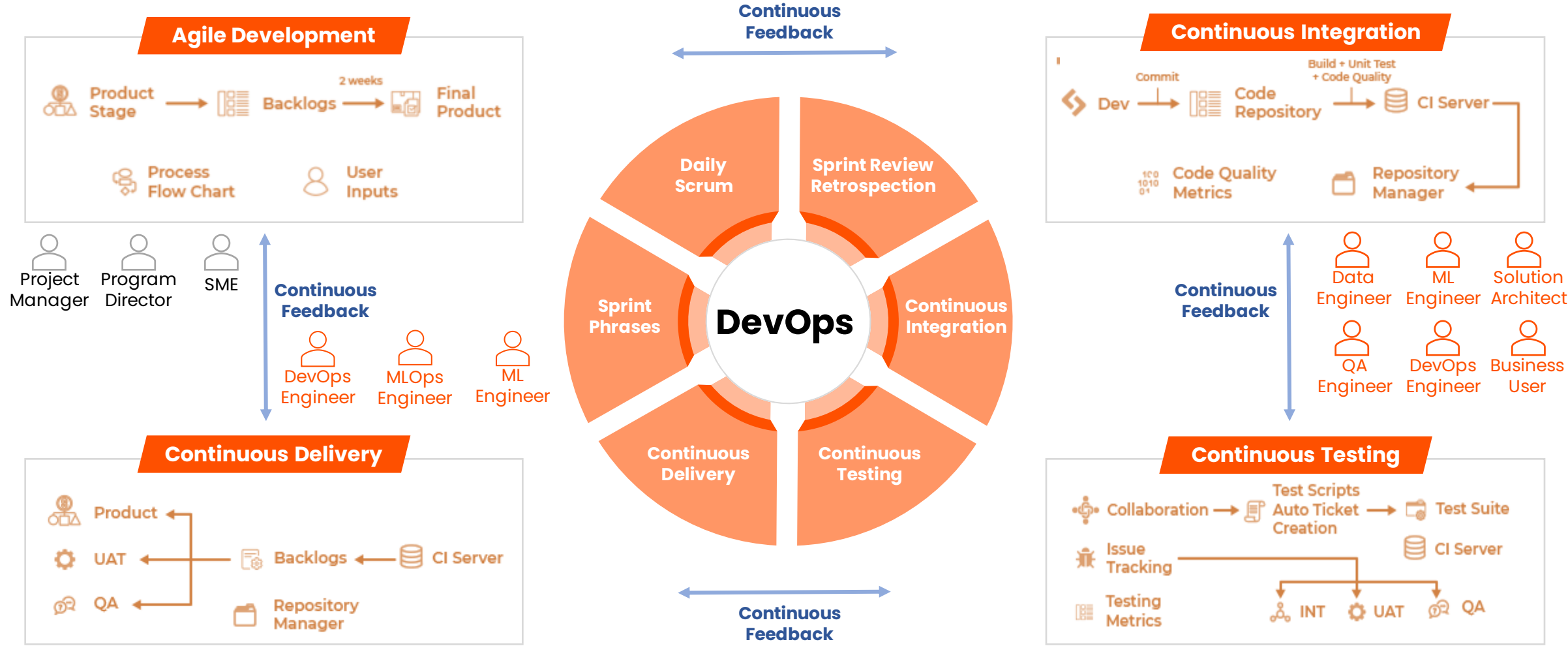
Data & Insights Healthcare Platform: **Technical Architecture**



Data & Insights Healthcare Platform: **Security Solution**

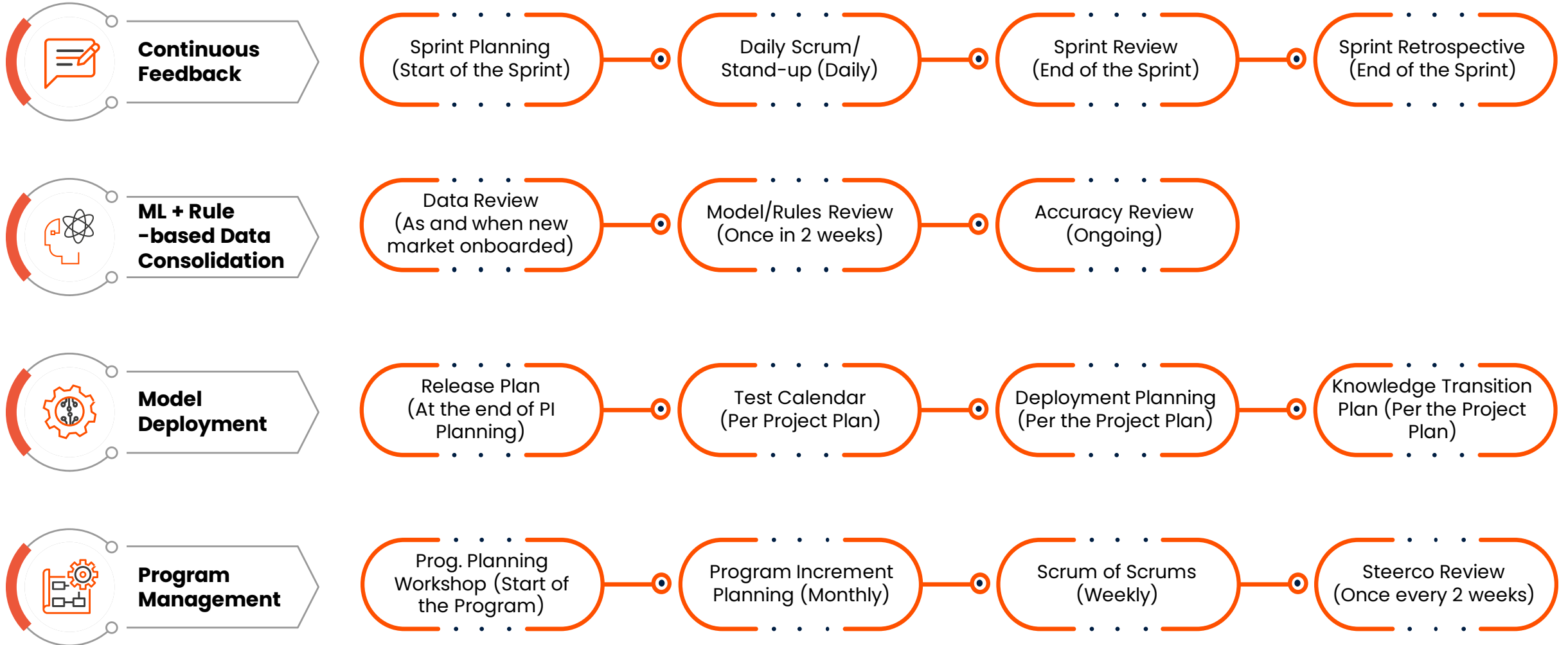


HealthEM.AI Best Practices to Streamline



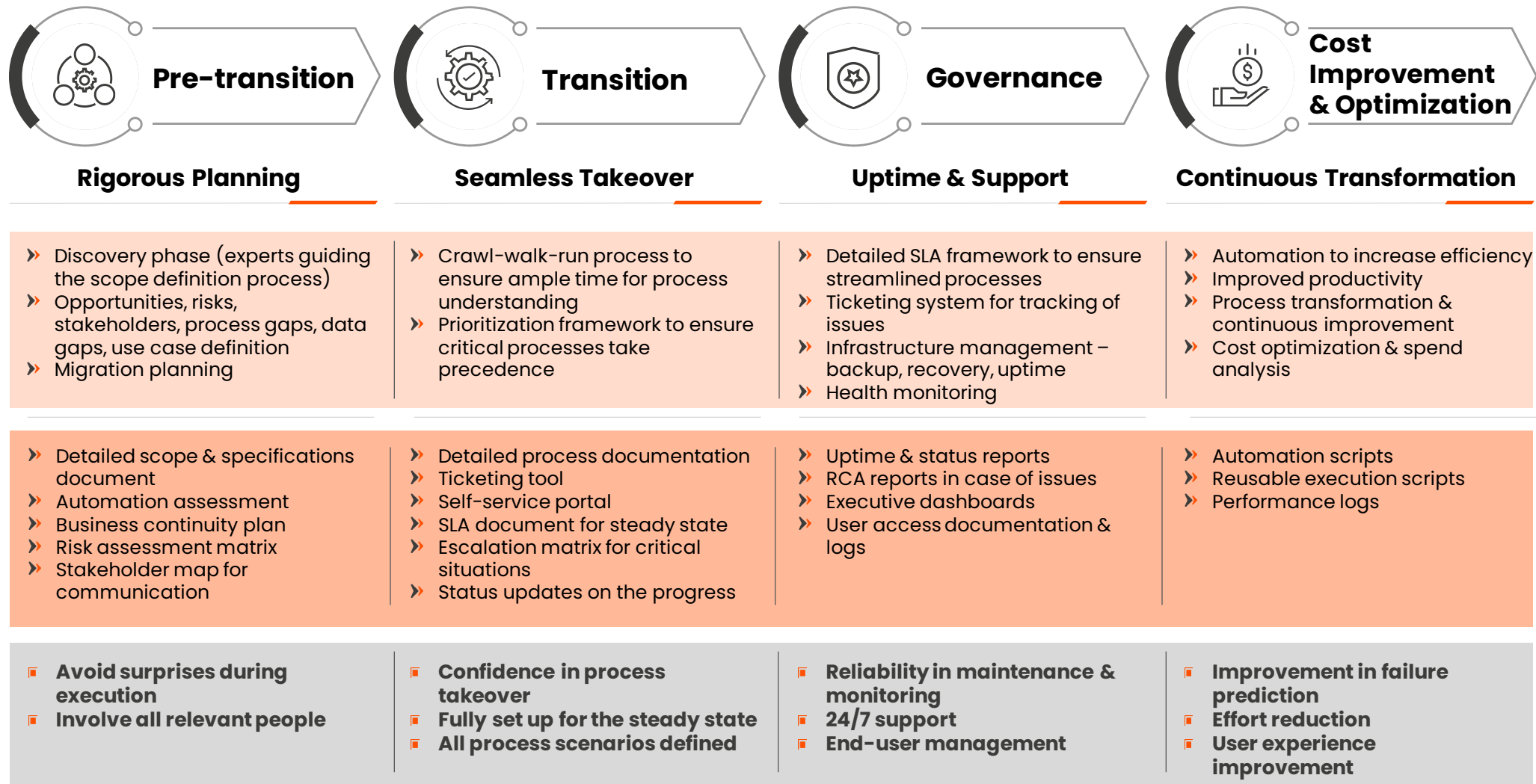
Proposed Cadence Across Workstreams for Optimal Velocity

A complex program requires coordination across several teams and the appropriate governance controls for delivering a high-quality solution and sustaining it in the longer term.



We Follow a Robust Process to Ensure Smooth Process Transition and Maintenance.

The maintenance cost is determined by the projected level of engagement from the solution support team.



Thank You



HealthEM.AI

1900 Camden Avenue,
#66, San Jose, CA
95124.

