

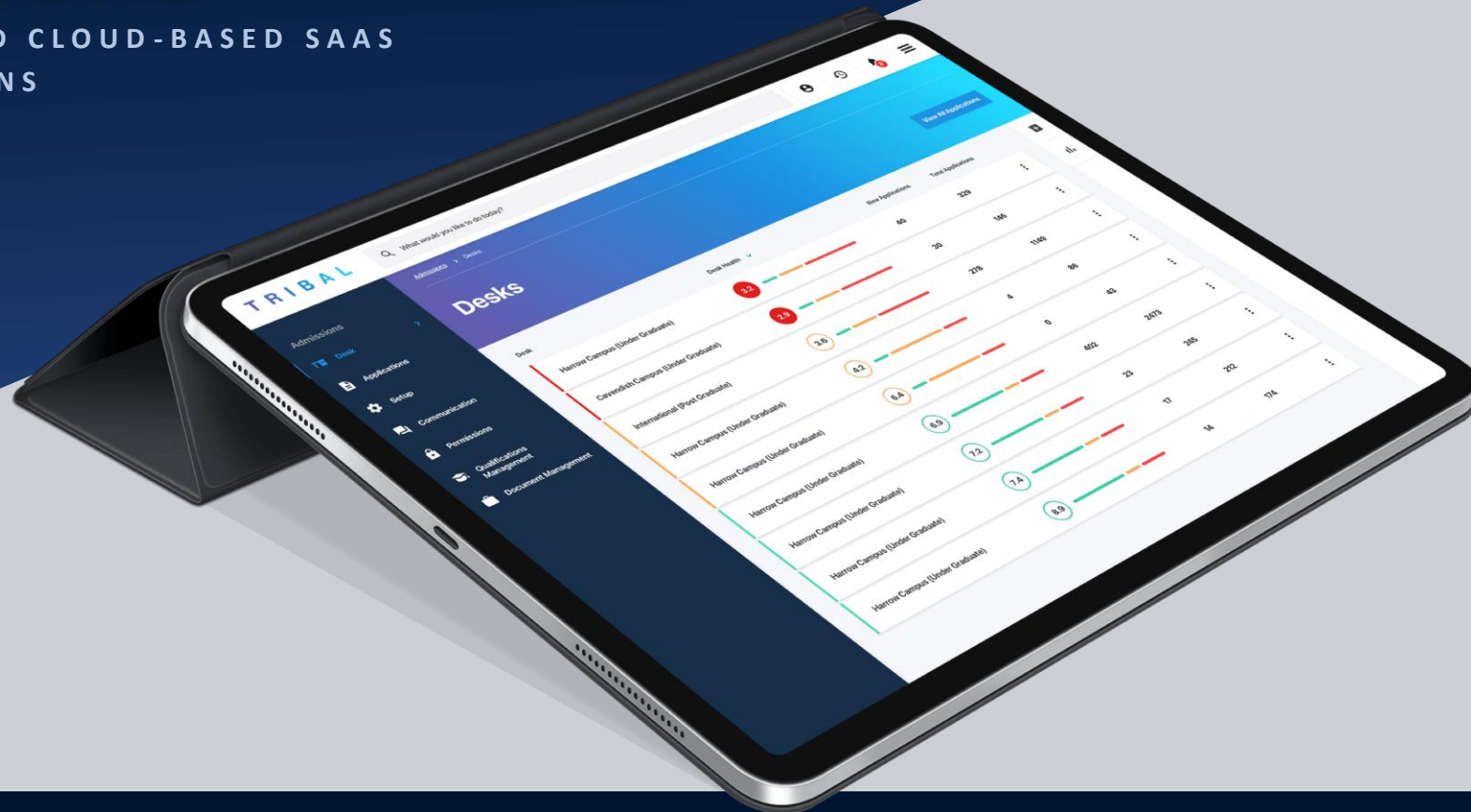
TRIBAL

Tribal Admissions



Tribal Admissions

FULLY INTEGRATED, STANDALONE, AND CLOUD-BASED SAAS
SOLUTION FOR UNIVERSITY ADMISSIONS



Tribal Admissions



Unrivalled user experience

- Responsive, accessible, and intuitive design means extensive training and lengthy staff onboarding is a thing of the past
- No complicated abbreviations, complex processes and multi-window clutter.
- Delivers one of the finest software experiences available in higher education.



Powerful speed and efficiency

- The number of clicks, screens, and time it takes to process applications is vital when your admissions department is under pressure. Tribal Admissions makes the process faster.
- Dynamic bulk processing, computer assisted decision making, and processes developed from over 20 years of experience are just some of the ways Tribal Admissions drives efficiency.



Open, secure and future ready

- Stay future-ready in the ever-changing world of education.
- With open APIs, event mapping and pre-built integration with your Tribal SIS, Tribal Admissions ensures your are responsive to change and able to integrate seamlessly with new and existing solutions.
- Built for security, with high availability, consistent performance and dynamic scaling

Tribal Admissions



**Unrivalled user
experience**



**Powerful speed and
efficiency**



**Open, secure and future
ready**

TRIBAL EDGE PLATFORM

Secure and compliant

Automatically tested over 25,000 times a day Compliant with ISO 27001, NIST CSF, PCI DSS and more.

Always up-to-date

Built for true SaaS delivery. Ensuring you always benefit from the latest patches and security enhancements.

Cloud native

Industry leading secure cloud infrastructure provided by Microsoft Azure and managed by HE experts.

Powering experiences

The human-centric experiential design of Tribal Edge provides experiences fit for the modern world.

Intelligent

Machine intelligence, and computer assisted decision making are baked in at the platform level.

Student Marketing & Recruitment

Increase prospects and maximise ROI

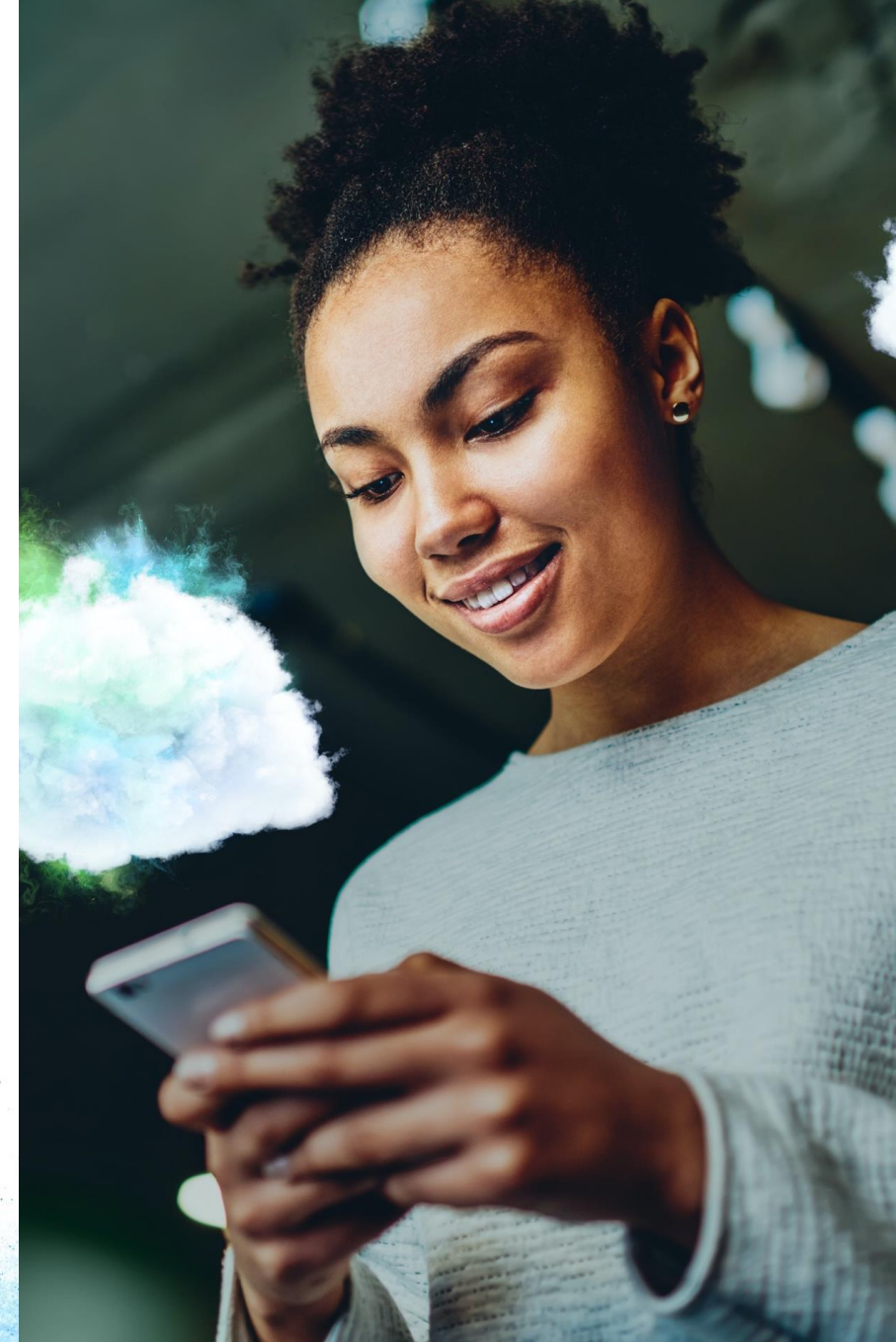
- Understand what engages successful applicants and minimise funnel dropouts.
- Gain visibility over your omni-channel and targeted marketing activities.
- Improve your processes, and maximise your ROI.

Attract and convert more students

- Nurture demand, personalise interactions, build future student relationships.
- Utilise advanced reporting to understand what works in getting prospects to apply and successfully convert.

Deliver compelling student experiences

- Create personalised brand experiences with interactions through the candidate's preferred communication channel.
- Tailor campaigns specifically crafted for your target recruitment profile, utilising automation throughout the solution.



The Admissions eco-system

STUDENT MARKETING & RECRUITMENT

Attract, track and recruit students with engaging personalised experiences

Increase prospects and maximise ROI

Attract and convert more students

Deliver compelling student experiences

TRIBAL ADMISSIONS

Fully integrated, agile and future ready admissions system

Unrivalled user experience

Powerful speed and efficiency

Open, secure and future ready



Visibility of outcomes



Incredible experiences




Efficiency and accuracy


Tribal Admissions


Start at the beginning of their journey

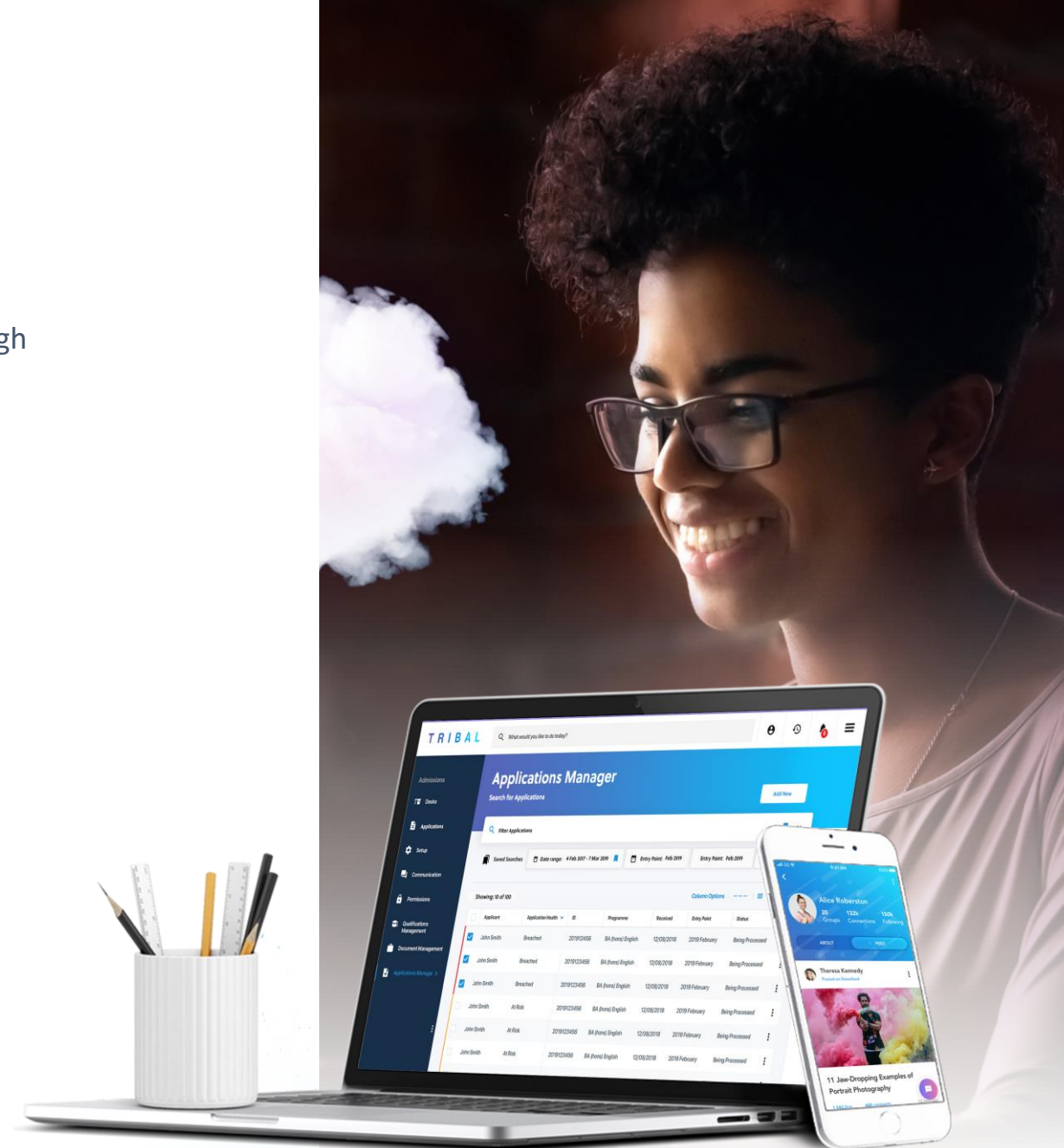
Admissions starts and ends with the student – from their recruitment through to application, decision, offer and acceptance.

Deliver a consistent, connected, and exciting experience for students embarking on one of the most important journeys of their lives.

**Unrivalled user experience**

**Powerful speed and efficiency**

**Open, secure and future ready**



Tribal Engage - Anytime, anywhere

Prospective students are more connected, collaborative and innovative than ever before. They expect the same capabilities when looking for an institution to attend.



Greatly improved prospect engagement



Exceptional and personalised experience from first contact



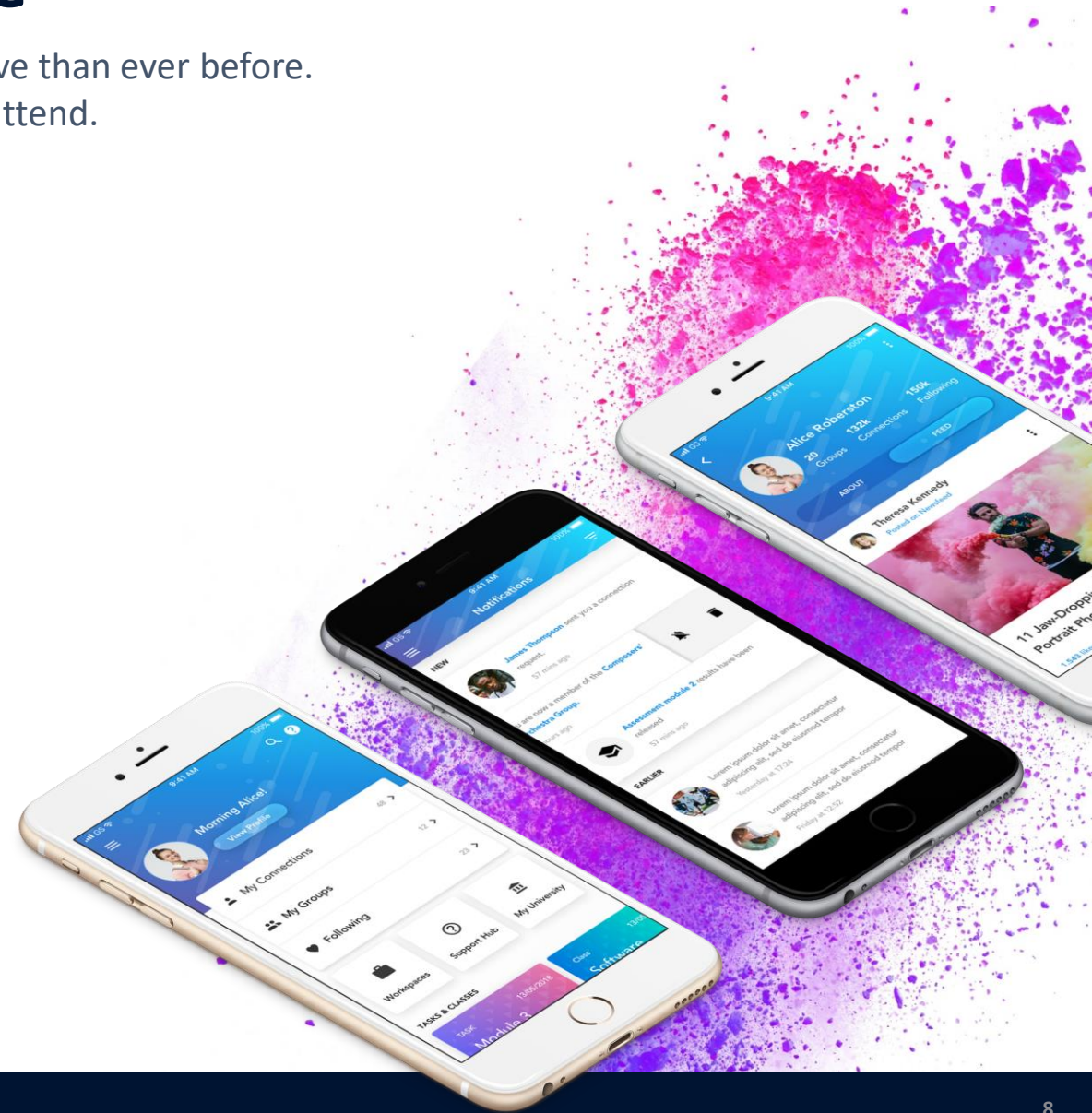
Your institution brand and messaging in their hand



Streamlined application management



Seamless transition to on-course communication



T R I B A L

0330 016 4000

hello@tribalgroup.com

www.tribalgroup.com