

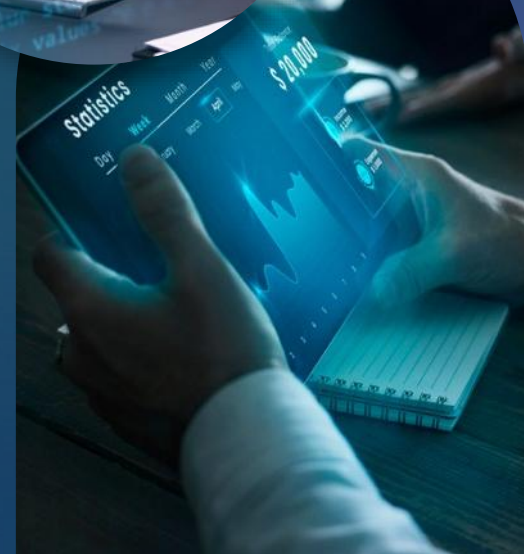


# Microsoft Fabric

6 Weeks Implementation

## From Silos to Synergy

**UBTI** Brings Every Data Source  
Together in Microsoft Fabric



## Detailed Description



# Unify, Modernize, and Activate Your Data with Microsoft Fabric.

In a world where data lives across on-premises systems, multiple clouds, and countless applications, organizations struggle to gain a single, trusted view of their business. UBTI helps enterprises overcome these challenges with Microsoft Fabric — a unified, AI-powered data platform that smoothly integrates data engineering, real-time analytics, business intelligence, and AI/ML into one connected ecosystem.

Our team of Microsoft Certified Fabric Experts builds scalable, secure, and AI-ready environments that unify every dataset (structured or unstructured) into a single source of truth. As a Microsoft Fabric Featured Partner and Real-Time Intelligence Featured Partner, UBTI's implementations accelerate insights, strengthen governance, reduce license complexity and cost.



# Implementation Framework

## Phase 1 Discovery & Strategy



Phase 2  
Architecture &  
Foundation



Phase 3  
Implementation &  
Integration



Phase 4  
Advanced Analytics,  
AI & Real-time Insights



Phase 5  
Governance, Security,  
and Go-Live

## Phase 1: Discovery & Strategy



**Assess** data estate  
and align with  
business goals.



**Identify** data  
sources: SQL, APIs,  
data lakes, SaaS, files.



**Define** governance,  
compliance, and  
security  
requirements.



**Create** a Solution  
Blueprint aligned  
with objectives.

# Implementation Framework

Phase 1  
Discovery & Strategy



**Phase 2**  
**Architecture & Foundation**



Phase 3  
Implementation & Integration



Phase 4  
Advanced Analytics,  
AI & Real-time Insights



Phase 5  
Governance, Security,  
and Go-Live

## Phase 2: Architecture & Foundation



**Design** domain-based OneLake workspaces for unified data.



**Set up** Lakehouse, Data Warehouse, and Real-Time Intelligence.



**Configure** Microsoft Purview for cataloging and compliance.



**Define** naming conventions, metadata models, and access controls.

# Implementation Framework

Phase 1  
Discovery & Strategy



Phase 2  
Architecture &  
Foundation



**Phase 3  
Implementation &  
Integration**



Phase 4  
Advanced Analytics,  
AI & Real-time Insights



Phase 5  
Governance, Security,  
and Go-Live

## Phase 3: Implementation & Integration



**Build** pipelines using Data Factory, Dataflows Gen2, and PySpark.



**Migrate** & Unify data from on-prem, Azure, AWS, and third-party sources.



**Create** semantic models and enable Power BI self-service.



**Expedite** pipeline delivery using metadata-driven automation.

# Implementation Framework

Phase 1  
Discovery & Strategy



Phase 2  
Architecture &  
Foundation



Phase 3  
Implementation &  
Integration



Phase 4  
Advanced Analytics,  
AI & Real-time Insights



Phase 5  
Governance, Security,  
and Go-Live

## Phase 4: Advanced Analytics, AI & Real-time Insights



**Enable** AI/ML with Azure ML, Copilot, and Data Science tools.



**Implement Data Activator** for real-time dashboard alerts and anomaly detection.



**Build** predictive models and embed Generative AI in business workflows.



**Enable** decision-makers with streaming insights and intelligent automation.

# Implementation Framework

Phase 1  
Discovery & Strategy



Phase 2  
Architecture &  
Foundation



Phase 3  
Implementation &  
Integration



Phase 4  
Advanced Analytics,  
AI & Real-time Insights



Phase 5  
Governance, Security,  
and Go-Live

## Phase 5: Governance, Security, and Go-Live



**Validate** performance, scalability, and readiness.



**Track** data lineage, usage, and audit logs.



**Deliver** complete documentation, training, and support assets.



**Implement** governance and security.



**Use** Microsoft Purview for catalog and governance.



**Set up** a Center of Excellence (CoE) for long-term Fabric adoption.

# Key Deliverables



## Discovery & Strategy

- Readiness and migration assessment report
- Target Fabric architecture and roadmap
- Data source inventory and governance outline



## Architecture Design & Foundation Setup

- Fabric reference architecture document
- Workspace setup and security configuration
- Purview integration and metadata documentation



## Implementation & Integration

- Fabric environment with data pipelines
- Bronze-Silver-Gold data layers
- Unified semantic model and Power BI dashboards





### Advanced Analytics, AI & Real-Time Insight

- AI/ML-ready Fabric environment
- Predictive and real-time dashboards
- Copilot enablement and automation setup



### Governance, Security & Go-Live

- Governance and Security Framework (RLS, CLS, Masking, Lineage)
- Purview Integration and Compliance Checklist
- CoE Playbook and Operational Runbook
- Knowledge Transfer and Training Sessions

## Optional Add-On: Microsoft Fabric Managed Services

### Key Services Include:

- Environment health monitoring and alerts
- Capacity and cost optimization
- Security and compliance audits
- Monthly governance reviews
- Continuous best-practice enhancements



“**UBTI** offers continuous monitoring, governance, and optimization for Fabric environments, ensuring peak performance and cost efficiency.”

### Key Business Outcomes:

- Unified analytics foundation connecting all data sources
- Simplified architecture and reduced complexity
- AI/ML and Copilot readiness for intelligent insights
- Real-time decision-making with Power BI dashboards
- End-to-end data governance and compliance
- Best ROI, Cost optimization, and enterprise scalability



# Why UBTI?



**Microsoft Fabric Featured** Partner



Microsoft **Real-Time Intelligence**  
Featured Partner



**Microsoft Certified** Fabric Experts



Proven experience in **Fabric migration,  
modernization, and AI solutions**



Expertise across Microsoft Fabric — **OneLake,  
Data Warehouse, Data Factory, PySpark,  
Power BI, and AI/ML**



**End-to-end CoE** and **Managed Services** for  
sustained adoption and governance

*Implement Microsoft  
Fabric for your  
organization  
with UBTI today.*

**Let our experts help you**  
connect every dataset,  
modernize your analytics  
ecosystem, and unlock AI-  
powered insights —  
transforming your  
organization's data from  
silos to synergy.