



ChargeUp

Brief introduction of ChargeUp CPO and ESP applications

10/11/19



Alternative fuels = European trend

- Supported by government EU and worldwide. This trend will be keep increasing exponentially
- Main argument: Reduction of CO₂ emissions – advantage especially for cities
- Legislative motivation:
 - Restrictive – limited entry to cities, limits for CO₂, emissions, Nox, etc.
 - Positive – subsidy, tax advantage, free parking, dedicated lanes, etc.
- Electromobility definitely will not be the only solution for clean and decarbonized transport system, but will be relatively significant part of the market
- No doubts that electricity market must be ready for that

European market situation

■ Current state

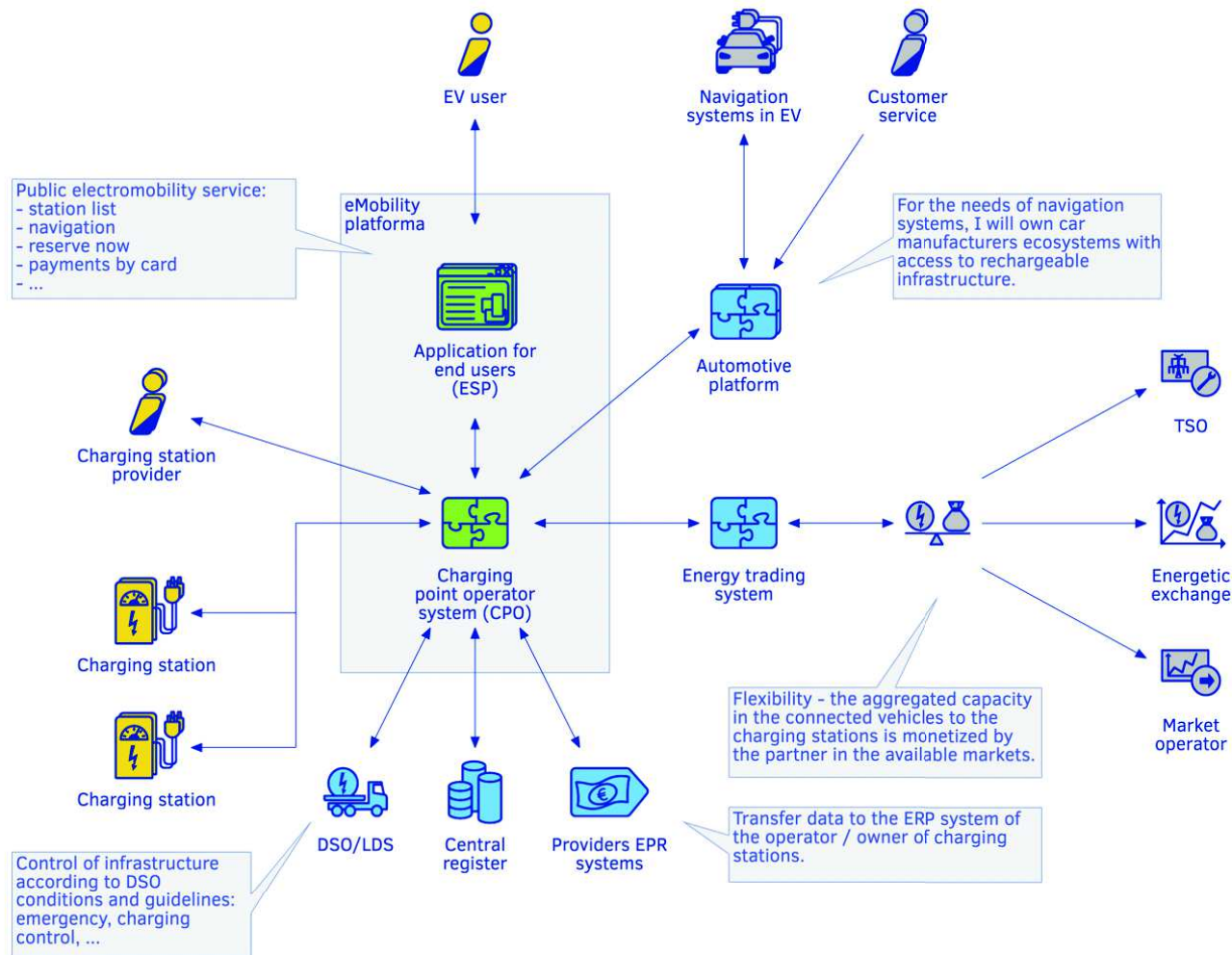
- 1,5 mil. of EVs on the roads (out of 270 mil. vehicles in total)
 - 800k battery electric vehicles (BEV)
 - 700k plug-in hybrid vehicles (PHEV)
- 177k chargers available
 - 148k of AC chargers
 - 29k of DC chargers
- *8,5 EVs per 1 charger*

■ 2025 outlook

- 25 mil. of EVs on the roads
- 2,5mil of chargers available
- *10 EVs per 1 charger (goal defined by European commission)*

Source: www.eafo.eu

Comprehensive eMobility management platform



ChargeUp CPO

- Charging Point Operation (CPO) is the management application for charging infrastructure providers

“Modern and reliable platform which supports management of charging infrastructure in user friendly way as well as monetization of charging and other related services”

- Key features

- Multi-brand charger support
- High availability and stability of charger
- Provided as service, operated in flexible and virtualized cloud environment
- 24/7 support and charger operations
- Easy management of your electric fleet
- Monetization of charging networks
- Rapid and easy access to the new markets

Station list & dispatching

Monitoring dobijecích stanic

Adam Pecka
Operátor provozu

FILTR

NÁZEV, KÓD STANICE
Sem napište text

KRAJE
Všechny lokace

ZNAČKA STANICE
Elexim
ABB

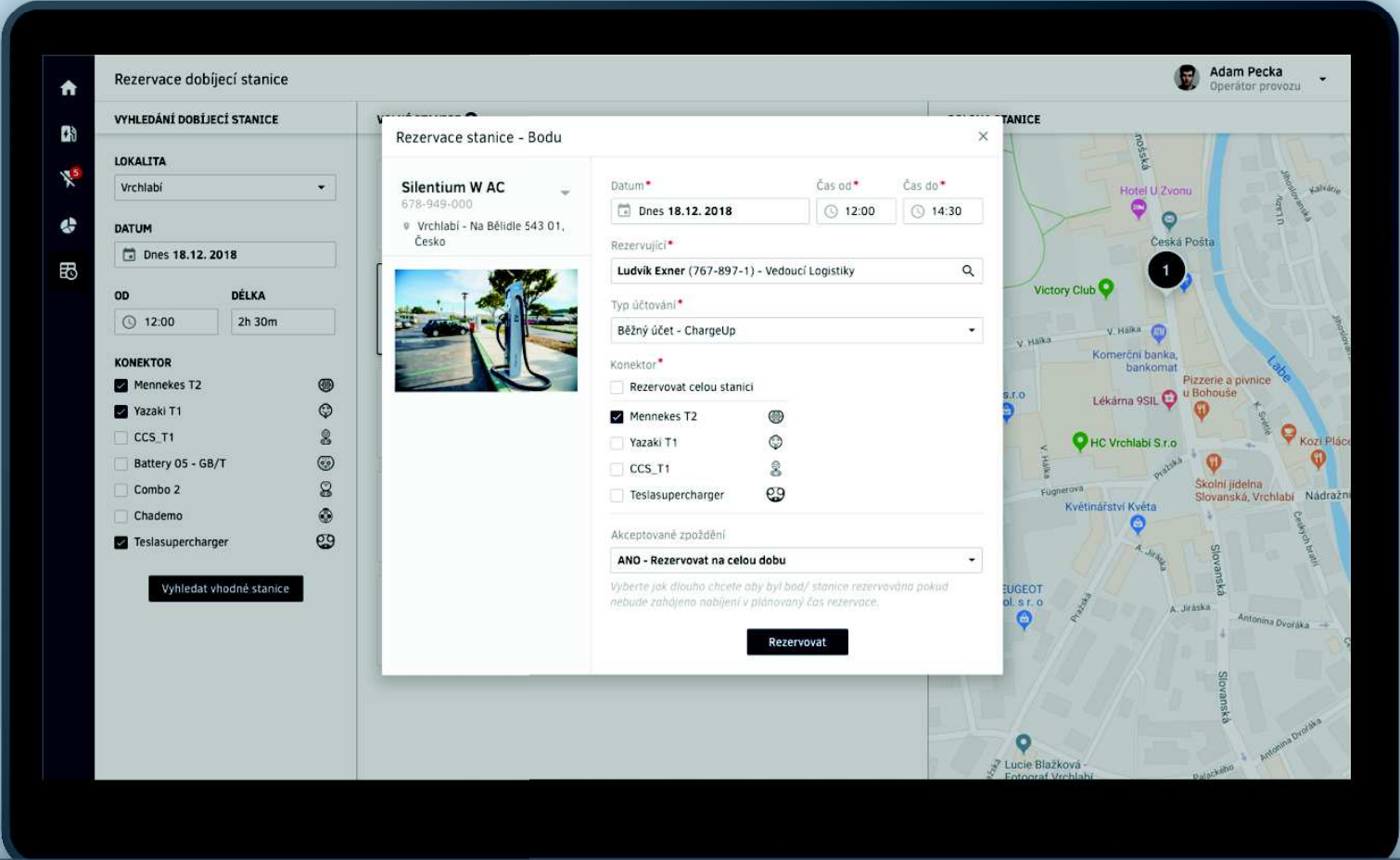
STAV STANICE
Aktivní
Neaktivní
S chybou

NEPOTVRZENÉ CHYBY 5 VŠECHNY CHYBOVÉ STANICE

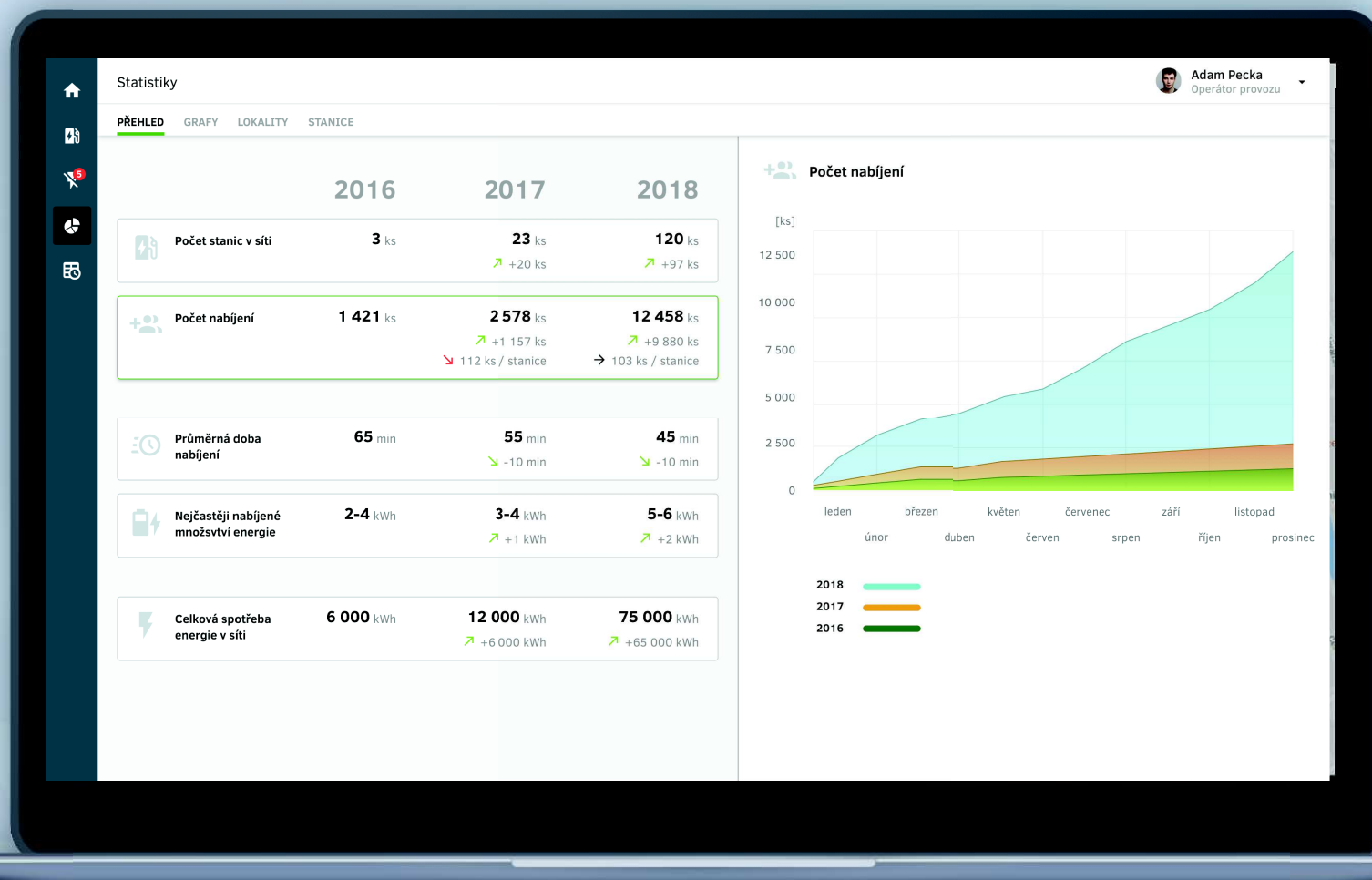
Raption 50 485-549-549	Z1 Z2 Z3 Z4
Litoměřice - Plešivská 1 412 01, Česko	
Silentium W AC	
Zásuvka 1 400V AC32A typ2 485-549-549/1	Uzamknout Spustit
Error ID: 78253823 - Prerušený datový tok komunikace. Poslední komunikace 10.2.2019 17:29:30.	
Zásuvka 2 400V AC32A typ2 485-549-549/2	Uzamknout Spustit
Zásuvka 2 400V AC32A typ2 485-549-549/2	Uzamknout Spustit
Detail stanice Restart stanice	Potvrdit chybu
Silentium W AC 485-549-549	Z1 Z2 Z3 Z4
Poděbrady - Jiřího nám. 1 290 01, Česko	
12.10. 2018	
Silentium W AC 485-549-549	Z1 Z2 Z3 Z4
Praha 14 - Broumarská 198 00, Česko	
Silentium W AC 485-549-549	Z1 Z2 Z3 Z4

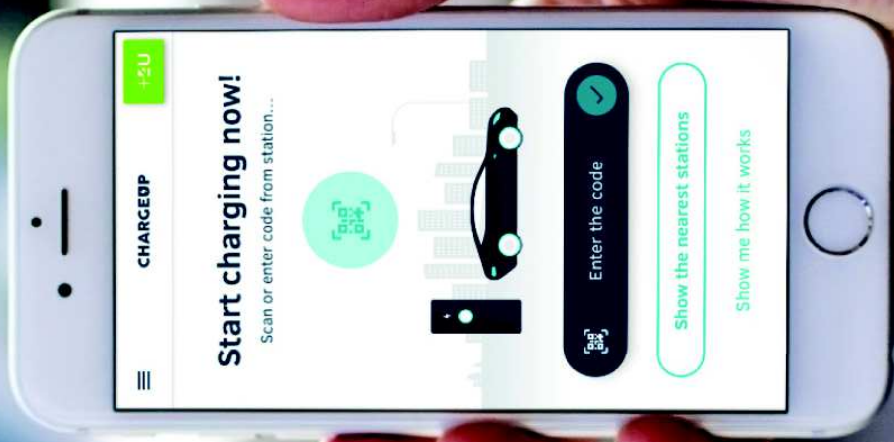
POLOHA STANICE

Reservation module



Reports & statistics





CHARGEUP

+5U

Start charging now!

Scan or enter code from station...



Enter the code



Show the nearest stations

Show me how it works

ChargeUp ESP

- Energy Service Provider (ESP)
- Application for EV drivers

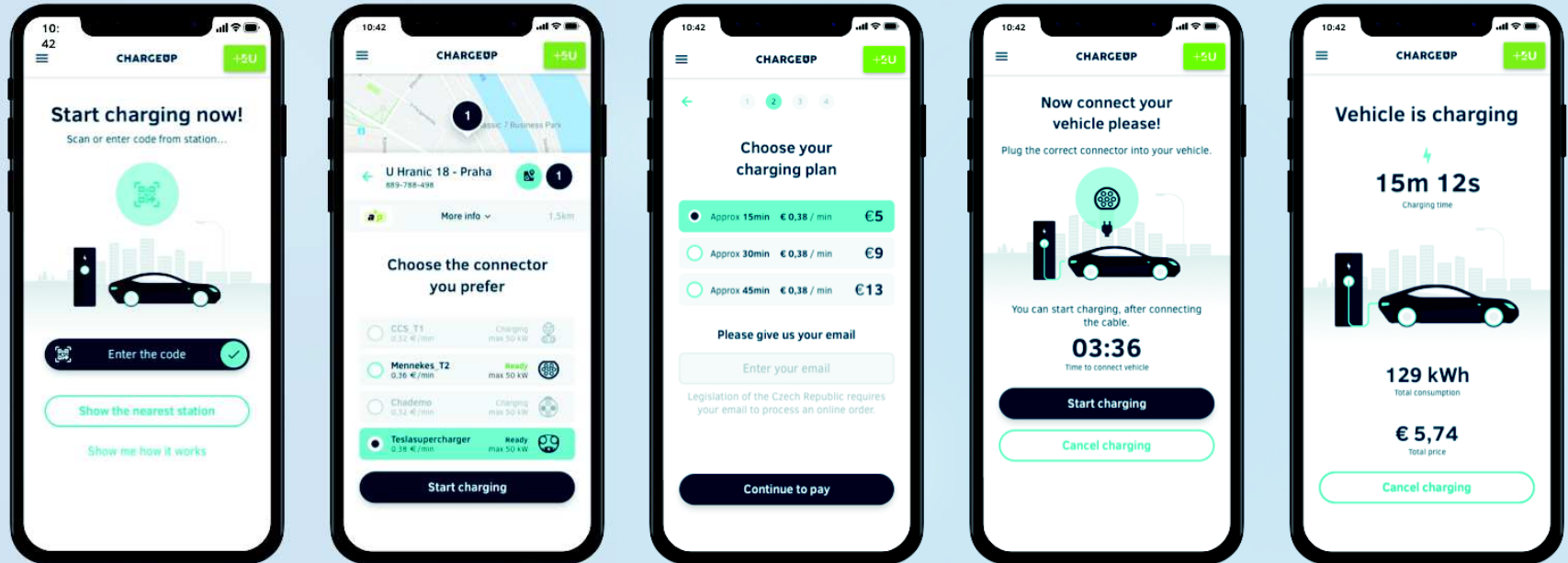
“Easy-to-use app for searching of available charging station including consistent information about actual station status with possibility to make a reservation, charge the car and pay for it.”

- Key features
 - Modern app for EV drivers
 - Charging station map & navigation
 - Simple order flow
 - Possibility to charge with no registration
 - Multiple payments option
 - Order history for registered users
 - Provided as service
- **Connection charging infrastructure providers and EV drivers**

Simple flow



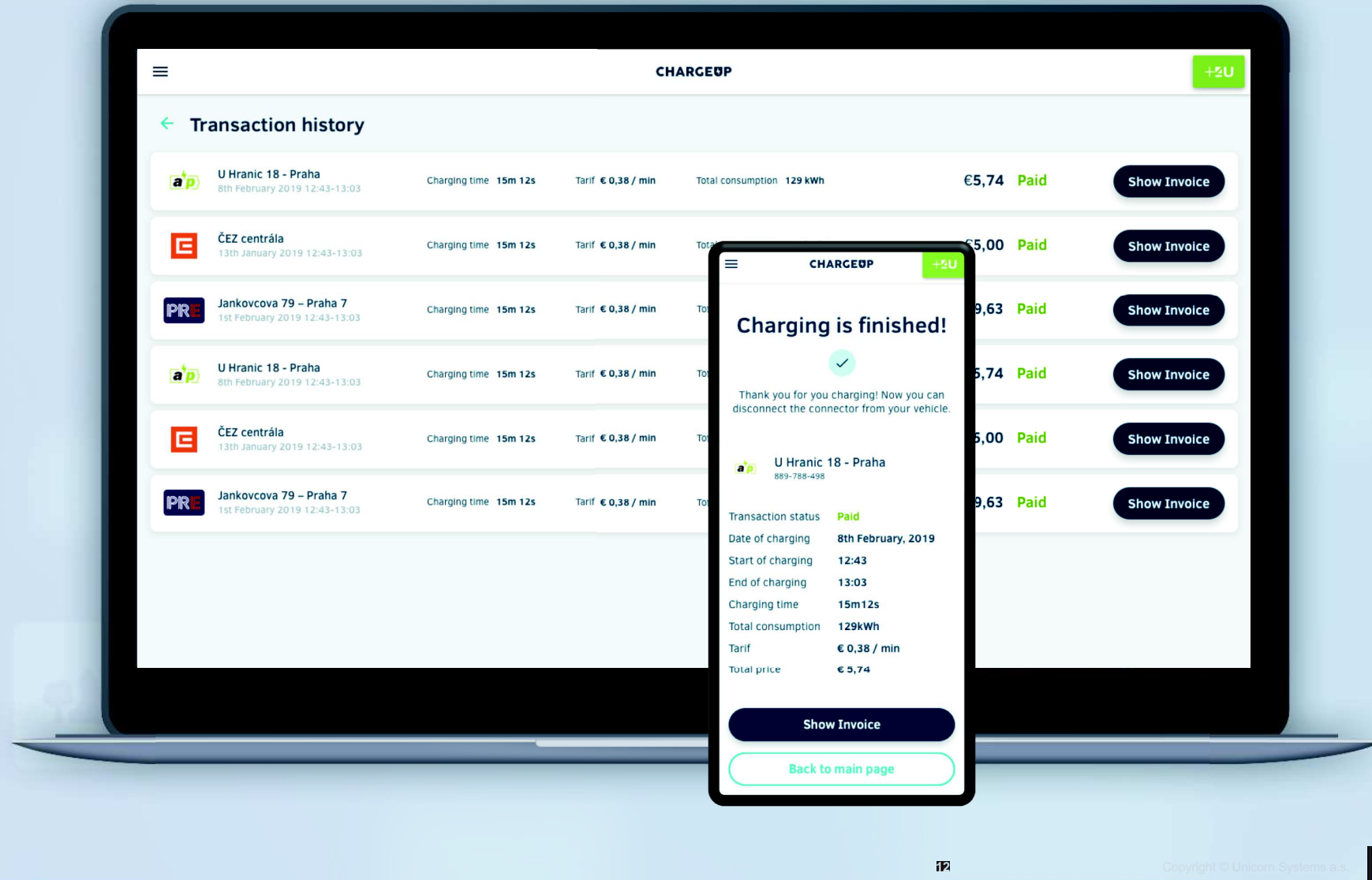
funguje...



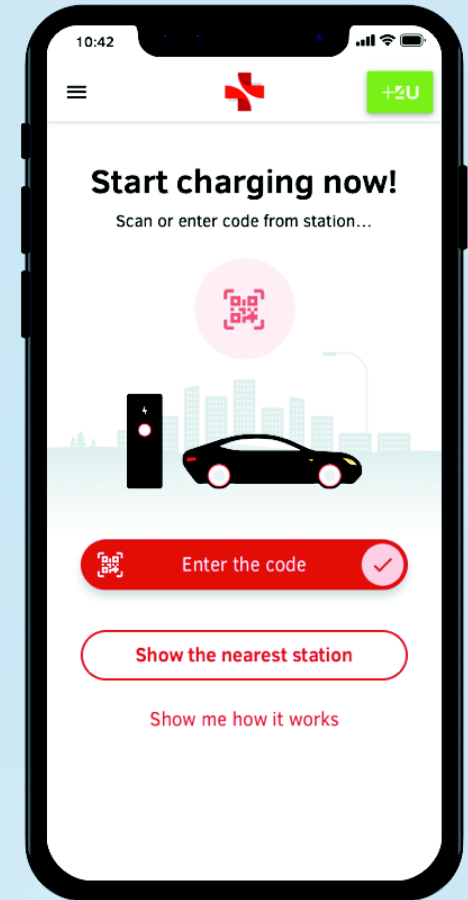
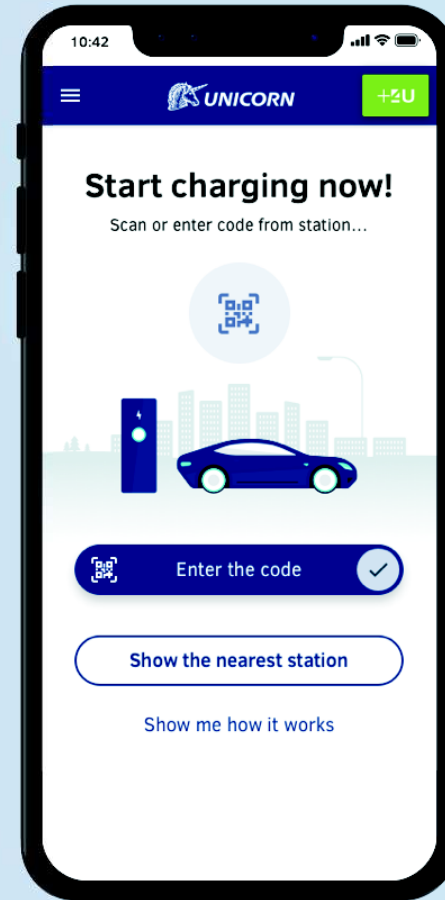
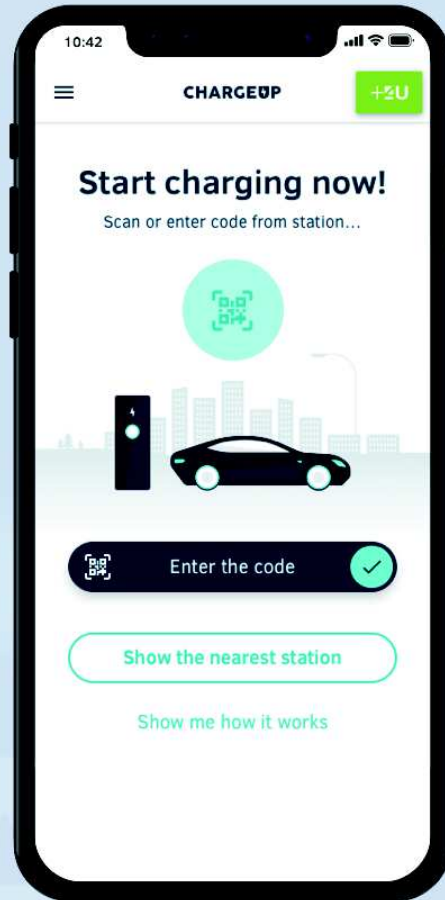
CHARGEUP



Order history



White labeling



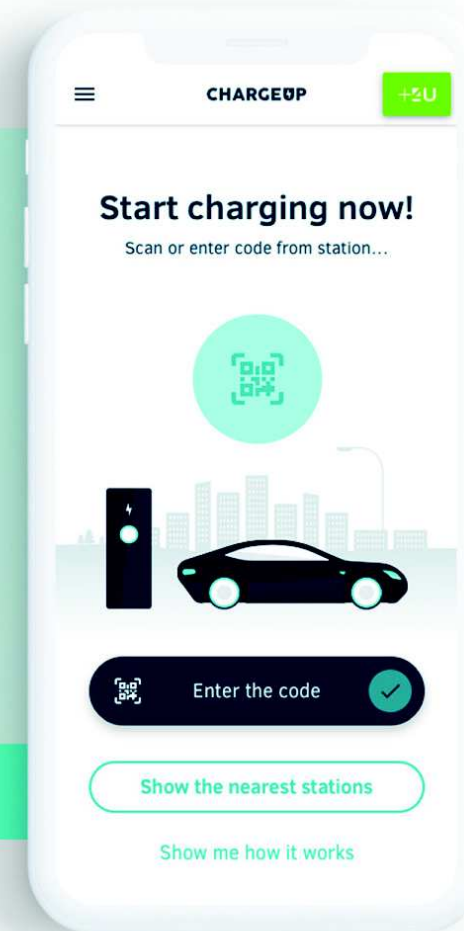
CHARGEUP

Live demo

CHARGEUP

Worldwide charging solution
for drivers and CPO

Open application



Thank You

