

i3CEP
NoCode Innovation



Azure Service Operations Management



Azure Service Delivery Management



Azure Cost | Capacity | Optimization Management (ACOM)

| A Sneak Peek into a Customised Management Service

| Developed on a Innovative NoCode i3-Cloud Excellence Platform ([i3CEP](#))

| Inclusive Design with Sensible Intelligence (SI) - Practical | Reasonable | Rational

| Primary focus on Customer Service Management

| Service Readiness |

- | OTB (Out-of-The-Box) | Ready-to-Deploy

| Service Deployment Options |

- | Direct Method | Customers Tenant
- | Indirect Method | Host on i3CEP Tenant | Managed Services Subscription

➤ Azure Cost | Capacity | Optimization Management (ACOM) |

- A Customized | Ready-to-Deploy | Azure Service Spend & Usage Dashboard/Report Template, developed on NoCode i3CE Platform ([i3CEP](#)) | An Inclusive Design with Sensible Intelligence (SI) - Practical | Reasonable | Rational
- **ACOM** Service Spend & Usage Dashboard/Report Template provides Azure Enterprise Agreement (EA) Customers with Advanced Insights into Yearly / Monthly / Daily Azure Service Spend, Service Usage Trends, Capacity In-Use and probable Cost & Capacity Optimization Service areas, cutting across Primary & B2B Tenants | Azure Regions | Organization / Departments & Accounts | Subscriptions & Resource Groups | Service Categories & Sub-Categories | actual Product SKUs | Individual Resources & Resources Names
 - Modular approach | Aligned to Azure EA Framework -| *Get visibility of the current configured EA Structure, Hierarchy & respective Azure Spend*
 - CXO / Exec. | High Level Overview | Azure Service Spend -| *Overall Service & Marketplace Spend | RI Purchase, Savings & Recommendations | AHB Usage*
 - BAU Ops | Low Level Overview | Azure Service Spend & Usage -| *Resource Count, Usage Hours, vCPUs / Cores, Data & Snapshot sizes, Cost & Last Day Capacity view for | Virtual Machines & License | Storage, ANF, AMLFS & Disks | Backup & ASR | Network & Bandwidth | Security | Databases | Data & AI | App/PaaS Services | Resource Inventory | Price List*
 - Advanced Insights accurate up to n-1 day over a selected period, initial period is set to 1 or 2 Months, can be changed between 0 to 12 Months
 - Extensive Filters, Row / Column Drill Up/Down options, Interdependent Tiles, **Personalize** visuals option, **Focus Mode** for enhanced Full-page visibility & option to set **Alert** notifications
 - Options to export Individual Reports to MS Excel or Analyse in MS Excel with Direct Query Live Connection to the Semantic Model
 - Schedule Report Refresh options - Hourly / Daily / Weekly across different Time-Zones
 - Requires Power BI / Fabric Workspace with Pro / Premium / Fabric License respectively
 - Deploy directly Straight Out-of-The-Box (OTB) to Customer Tenant with Relative Ease
 - Optional Indirect-Deployment method | SaaS offering, hosted on i3CE Platform | Subscribe as Managed Service
 - No Specific Tech Skills required, No Code or API / KQL / DAX quires to be developed
- Value Add - Bespoke Report | [Azure Resource Quota Usage Insights](#)
 - This Report serves as Readymade Template to get Azure Quota & Usage information for Compute, Disks, Storage & Network Resources and Idle / Orphaned Resources like NIC's, Managed Disks & Public IP's across all the Subscriptions under a specific Azure Tenant
 - Download the Report Template & go through the setup documentation at the GitHub Repo here - [GitHub - i3CEP/Azure-Quota](#)

➤ Azure Cost | Capacity | Optimization Management (ACOM) |

- Prerequisites:
 - Current scope for Azure Enterprise Agreement (EA) Customers only
 - Azure **‘EA Billing Account ID’** & **‘Enrollment Reader’** RBAC access for Data Connect
 - Power BI Admin access with permission to Install & Publish Template Apps
 - License requirement for “Backend Semantic Model (Data Connect)”
 - Power BI/Fabric Workspace with Pro/Premium/Fabric License (1 no,)
 - The SKU/License depends on the Data size of the Semantic Model
 - The Data size of the Semantic Model will depend on the “No. of Months” Parameter settings
 - Semantic Model Storage Limits by SKU is as depicted in the Table -----➤
 - License requirement for “ACOM-Advanced Insights Dashboard App”
 - Power BI Workspace with Pro Licence (1 no.)
 - License requirement for “ACOM-Advanced Insights Dashboard App Users”
 - Power BI Pro Licence (n x 1 no.)
- Deployment Methods:
 - Can be deployed Directly, Straight Out-of-The-Box (OTB) to Customer Power BI Tenant with Relative Ease
 - Optional Indirect Deployment method | SaaS offering, hosted on i3CE Platform | Subscribe as Managed Service
 - No Specific Tech Skills required, No Code or API / KQL / DAX quires to be developed
- Pricing Options: – Negotiated & Finalized during Purchase Agreement
 - Direct Deployment – Fixed Yearly Cost
 - Indirect Deployment – Variable Monthly Cost, based on Semantic Model Storage Limits

Semantic Model Storage Limits by SKU	
SKU / License	Max Memory per Semantic Model
Power BI Pro	1 GB
Premium P1 / F32	10 GB
F64	25 GB
F128	50 GB
F256	100 GB
F512	200 GB
F1024	400 GB
F2048	400 GB

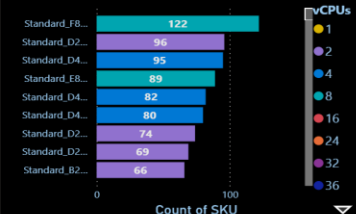
Azure Cost | Capacity | Optimization Management (ACOM) – Sample Snapshot of few Service Reports;



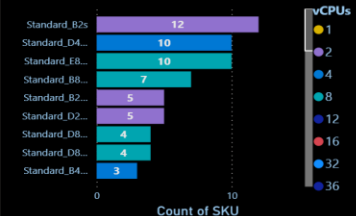
Windows, SQL & Linux Server AHB Usage Report

This Windows, SQL & Linux Server Azure Hybrid Benefits usage report shows how many VMs have AHB enabled, and of those VMs how many AHB vCPUs or cores are being utilized. For more information around Azure Hybrid Benefit see: <https://azure.microsoft.com/en-us/pricing/hybrid-benefit/>

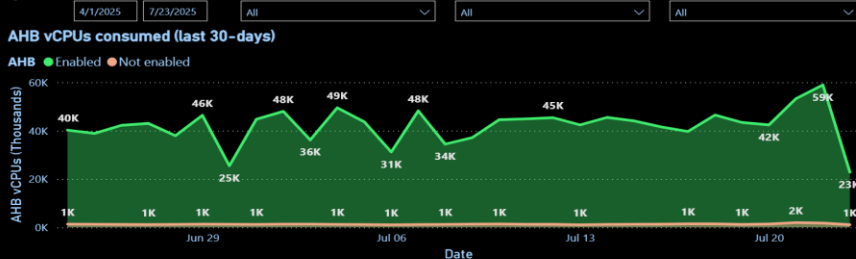
AHB Enabled SKUs (Last Day)



AHB Not enabled SKUs (Last Day)



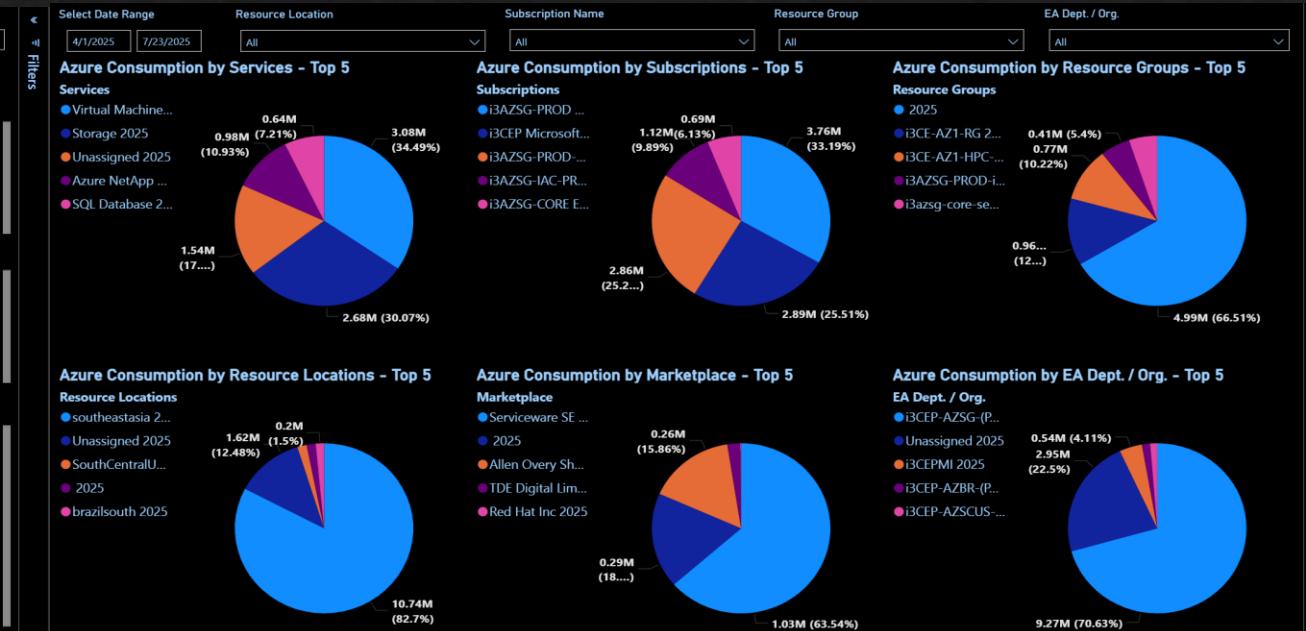
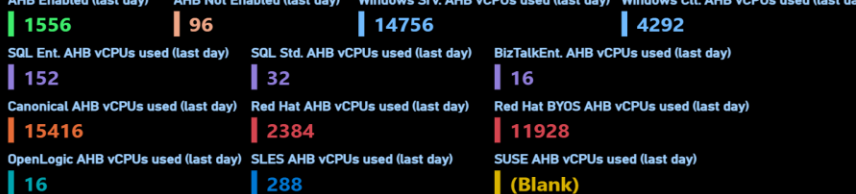
AHB vCPUs consumed (last 30-days)



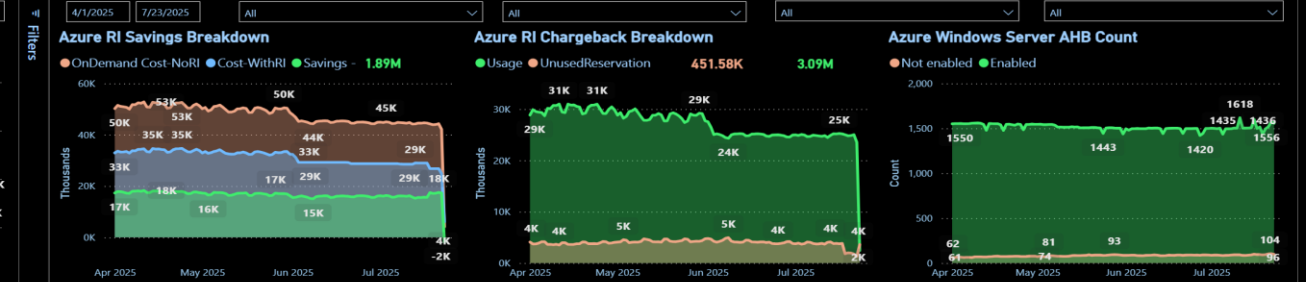
AHB Resource Details (Last Day)

Date	SKU	VCPUs	AHB vCPUs	Azure Hybrid Benefit	Subscription Name	Resource Group
7/23/2025 12:00:00 AM	Standard_E64ds_v5	64	64	Enabled	IAZSG-IAC-PROD-ENVCIRONMENT	IAZsg-iac-prod-oasis-rg
7/23/2025 12:00:00 AM	Standard_E64ds_v4	192	192	Enabled	IAZSG-PROD-ENVCIRONMENT	IAZSG-PROD-S3A-ECC-P30-R
7/23/2025 12:00:00 AM	Standard_E64ds_v5	128	128	Enabled	IAZSG-IAC-PROD-ENVCIRONMENT	IAZsg-iac-prod-oasis-rg
7/23/2025 12:00:00 AM	Standard_E64ds_v4	128	128	Enabled	IAZSG-PROD-ENVCIRONMENT	IAZSG-PROD-S3A-ECC-P30-R
Total		17454	23932			

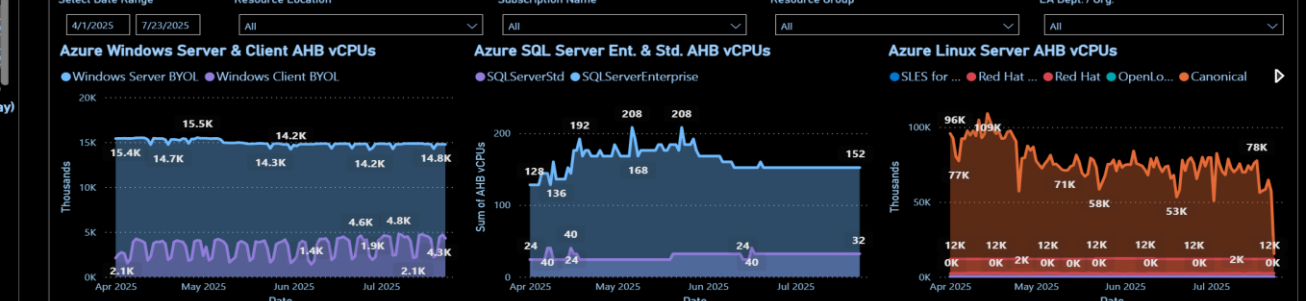
AHB Enabled (last day) AHB Not Enabled (last day) Windows Srv. AHB vCPUs used (last day) Windows Clt. AHB vCPUs used (last day)



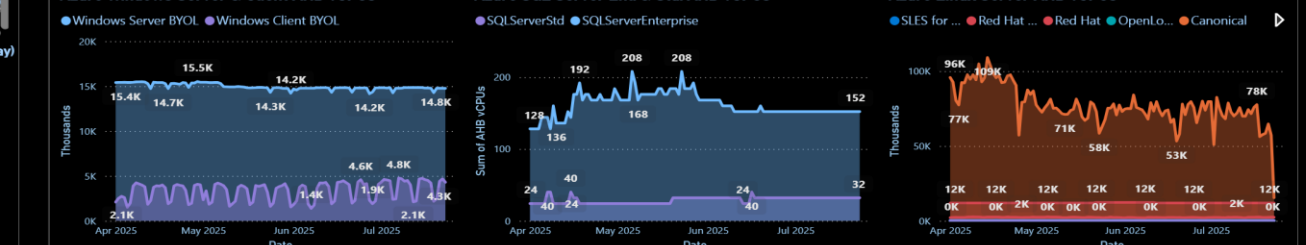
Azure RI Savings Breakdown



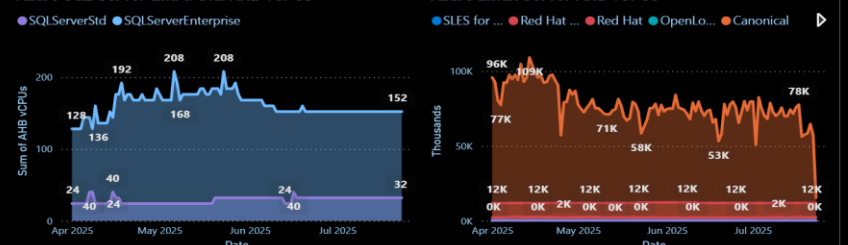
Azure RI Chargeback Breakdown



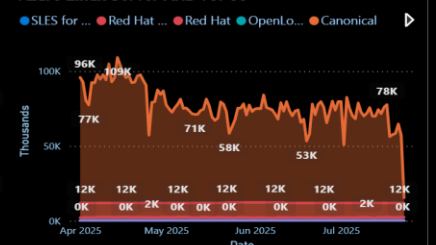
Azure Windows Server & Client AHB vCPUs



Azure SQL Server Ent. & Std. AHB vCPUs



Azure Linux Server AHB vCPUs





Azure Service Operations Management

➤ Azure Cost | Capacity | Optimization Management (ACOM) – Sample Snapshot of few Service Reports;

Select Date Range		Resource Location		Subscription Name		Resource Group		EA Dept. / Org.	
<div>4/1/20257/23/2025</div>		<div>All</div>		<div>All</div>		<div>All</div>		<div>All</div>	
Azure Services - EA Department-Account-Subscription Wise Consumption - MoM									Capacity - Last Date
Year	2025					Total	<div>i3CEP</div> <div>Billing Account Name</div> <div>1111111</div> <div>Billing Account ID</div> <div>USD</div> <div>Billing Currency</div> <div>8</div> <div>EA Departments</div> <div>14</div> <div>EA Accounts</div>		
EA Organization	April	May	June	July	Total				
<div>i3CEP-AZSG-(POD-1)</div>	2,890,541.88	2,190,294.21	2,276,370.09	1,911,768.68	9,268,974.86	9,268,974.86			
<div>Unassigned</div>	752,677.99	771,750.24	917,285.13	510,971.91	2,952,685.27	2,952,685.27			
<div>i3CEPMI</div>	143,931.21	145,172.61	145,297.22	105,214.64	539,615.68	539,615.68			
<div>i3CEP-AZBR-(POD-5)</div>	52,107.13	53,718.63	50,124.84	39,110.47	195,061.06	195,061.06			
<div>i3CEP-AZSCUS-(POD-6)</div>	82,737.74	50,303.15	19,580.87	14,495.58	167,117.34	167,117.34			
<div>i3CEP-AZWEU-(POD-4)</div>	19,521.85	19,299.71	19,245.29	15,032.17	73,099.01	73,099.01			
<div>i3CEPAP ENERGY</div>	5,719.67	5,897.02	6,090.29	4,690.63	22,397.60	22,397.60			
<div>i3CEPVI</div>	2,467.46	2,531.46	2,429.17	1,805.48	9,233.58	9,233.58			
Total	3,949,704.92	3,238,967.02	3,436,422.90	2,603,089.56	13,228,184.40	13,228,184.40			

Capacity - Last Date

i3CEP
Billing Account Name
11111111
Billing Account ID
USD
Billing Currency
8
EA Departments
14
EA Accounts
74
Subscriptions
2061
Resource Groups
28
Resource Locations
69
Services
217
Sub-Services
1281
Products
2
Publisher Types
11
Publishers

Azure Services - EA Department-Account-Subscription Wise Capacity Utilization (Last 1 Month)											
Date	6/24/2025 12:00:00 AM					6/25/2025 12:00:00 AM					6/26/2021
EA Organization	Count	Quantity	UOM	VCPUs	DataSize(GB)	Cost	Count	Quantity	UOM	VCPUs	DataSize(GB)
❏ 3ICEP-AZSG-(POD-1)	72103	199,860,351.30	1	184867	41,742,535.44	142,614.78	71932	200,402,191.98	1	176748	41,819,944.15
❏ Unassigned	967	1,213,178.49	1	362	124,487.66	61,586.20	897	1,076,444.84	1	364	124,952.72
❏ 3CEPMI	4354	128,545.87	1	7190	1,022,508.66	4,874.81	4299	126,786.49	1	6602	1,023,913.71
❏ 3ICEP-AZBR-(POD-5)	3	15,200.82	1 GB		28,437.98	1,706.81	3	15,344.40	1 GB		28,575.09
❏ 3ICEP-AZWEU-(POD-4)	45	12,326.54	1 GB	8	27,955.86	680.67	45	12,311.72	1 GB	12	27,951.17
❏ 3ICEP-AZCUS-(POD-6)	93	24,039.95	1	56	684,054.72	652.56	93	24,035.41	1	56	684,051.06
❏ 3ICEPAP ENERGY	295	26,028.50	1	2478	16,775.56	212.91	293	27,320.60	1	446	16,805.64
❏ 3CEPVI	263	1,581.56	1	16	6.59	80.97	280	1,583.64	1	22	6.60

Azure Services - Subscription Wise Consumption - MoM											
Year	2025					Total					
Subscription	April	May	June	July	Total						
❏ i3AZSG-PROD ENI3CVIRONMENT	1,389,744.50	712,428.26	787,565.98	869,076.97	3,758,815.71	3,758,815.71					
❏ 3ICEP Microsoft Azure Enterprise	734,141.33	754,433.74	900,281.57	499,969.02	2,888,825.66	2,888,825.66					
❏ i3AZSG-PROD-GC ENI3CVIRONMENT	776,347.60	790,396.04	784,083.42	512,569.47	2,863,396.53	2,863,396.53					
❏ i3AZSG-IAC-PROD ENI3CVIRONMENT	293,579.50	299,239.13	301,859.64	225,546.82	1,120,225.10	1,120,225.10					
❏ i3AZSG-CORE ENI3CVIRONMENT	180,446.27	185,873.18	190,272.71	137,518.14	694,110.30	694,110.30					
❏ i3AZSG-UAT ENI3CVIRONMENT	94,524.41	66,058.50	68,534.23	52,826.39	281,943.53	281,943.53					
❏ i3AZSG-DEV ENI3CVIRONMENT	72,061.00	62,380.87	69,626.82	53,995.16	258,063.85	258,063.85					
❏ i3AZBR-PROD ENI3CVIRONMENT	52,107.13	53,718.63	50,124.84	39,110.47	195,061.06	195,061.06					
❏ i3AZCUS-PROD ENI3CVIRONMENT	80,591.60	48,085.23	17,463.56	12,907.61	159,048.00	159,048.00					
❏ 3CEPMI-AZSG-PROD-ENV	39,675.17	40,341.42	40,528.22	28,962.88	149,507.68	149,507.68					
❏ i3AZSG-IAC-DEV ENI3CVIRONMENT	33,782.52	28,065.64	29,404.68	25,482.07	116,734.84	116,734.84					
Total	3,949,704.92	3,238,967.02	3,436,422.90	2,603,089.56	13,228,184.40	13,228,184.40					

Capacity - Last Date

Microsoft Defender for Serve...
4767
Count | Capacity
0.00
DataSize(GB)
(Blank)
VCPUs
Rtn Preference: MGN - Stand...
4301
Count | Capacity
2,498.64
DataSize(GB)
(Blank)
VCPUs

Azure Services - Subscription Wise Capacity Utilization (Last 1 Month)											
Date	6/24/2025 12:00:00 AM					6/25/2025 12:00:00 AM					6/26/2025 12:00:00 AM
Subscription	Count	Quantity	UOM	VCPUs	DataSize(GB)	Cost	Count	Quantity	UOM	VCPUs	DataSize(GB)
❏ i3AZSG-PROD ENI3CVIRONMENT	47168	2,145,895.45	1	100822	16,654,876.50	98,641.54	47603	2,157,862.51	1	93372	16,706,735.64
❏ 3ICEP Microsoft Azure Enterprise	301	62,440.98	1	88	24,442.76	61,048.58	246	62,421.25	1	90	24,424.62
❏ i3AZSG-PROD-GC ENI3CVIRONMENT	2238	164,053,827.16	1	34929	15,775,733.97	19,512.85	2111	163,400,752.49	1	37682	15,764,701.38
❏ i3AZSG-IAC-PROD ENI3CVIRONMENT	4513	14,802,335.84	1	13861	6,717,839.44	10,418.94	4499	14,922,504.62	1	14091	6,761,293.11
❏ i3AZSG-CORE ENI3CVIRONMENT	6382	606,807.95	1	2346	1,981,810.20	6,136.91	6374	605,469.82	1	3076	1,979,350.98
❏ i3AZSG-DEV ENI3CVIRONMENT	4278	924,086.29	1	16576	250,405.09	2,838.38	3798	945,193.97	1	13118	245,454.44
❏ i3AZSG-UAT ENI3CVIRONMENT	3324	111,980.50	1	8756	63,342.78	2,357.13	3290	115,373.85	1	7628	263,840.44
❏ i3AZBR-PROD ENI3CVIRONMENT	3	15,200.82	1 GB		28,437.98	1,706.81	3	15,344.40	1 GB		28,575.09
❏ 3CEPMI-AZSG-PROD-ENV	1711	39,773.83	1	2556	239,633.34	1,385.80	1662	38,402.38	1	2292	240,206.02
❏ i3AZSG-IAC-DEV ENI3CVIRONMENT	1862	6,528,029.13	1	2976	34,090.70	1,062.15	1930	7,761,378.79	1	2980	34,165.29
❏ 3CEPMI-I3CMH-AZSG-PROD-ENV	441	15,330.78	1	650	108,109.41	1,000.07	441	15,366.03	1	588	108,203.11
❏ i3AZSG-IAC-UAT ENI3CVIRONMENT	6690	50,646,452.30	1	10003	63,339,633.03	930.36	6690	50,450,000.00	1	7034	63,332,224.46

Virtual Network Peering - Int...

4035
Count | Capacity
4,743.55
DataSize(GB)
(Blank)
VCPUs
Virtual Network Peering - Int...
4035
Count | Capacity
18,148.29
DataSize(GB)
(Blank)
VCPUs

Select Date Range		Resource Location		Subscription Name		Resource Group		EA Dept. / Org.	
4/1/20257/23/2025		All		All		All		All	
Azure Services - Overall Consumption - MoM									
Year	2025					Total			
Service	April	May	June	July	Total				
Virtual Machines	950,690.12	895,328.94	865,588.32	367,573.08	3,079,180.48	3,079,180.48			
Storage	688,886.78	704,928.94	741,482.04	549,315.63	2,684,613.40	2,684,613.40			
Unassigned	783,238.08	145,732.01	120,511.30	493,816.35	1,543,297.74	1,543,297.74			
Azure NetApp Files	249,420.53	274,400.56	253,561.25	198,578.53	975,960.87	975,960.87			
SQL Database	169,054.48	171,607.61	167,693.81	135,094.37	643,450.27	643,450.27			
Azure App Service	154,510.52	156,059.23	135,574.15	97,310.90	543,454.80	543,454.80			
Backup	120,703.10	125,564.97	117,767.00	88,526.64	452,561.71	452,561.71			
Bandwidth	109,394.09	92,459.78	89,343.75	71,327.38	362,525.01	362,525.01			
Virtual Machine Licenses	47,824.00	47,824.00	197,824.00		293,472.00	293,472.00			
Microsoft Defender for Cloud	95,047.31	68,171.73	67,554.97	52,052.61	282,826.62	282,826.62			
Azure Synapse Analytics	63,973.01	63,836.81	63,408.16	67,696.97	258,914.95	258,914.95			
Total	3,949,704.92	3,238,967.02	3,436,422.90	2,603,089.56	13,228,184.40	13,228,184.40			

Capacity - Last Date

Microsoft Defender for Serv...

4767

Count | Capacity

0.00

DataSize(GB)

(Blank)

VCPUs

Rtn Preference: MGN - Stand...

4301

Count | Capacity

2,498.64

DataSize(GB)

(Blank)

Capacity - Last Date

Microsoft Defender for Serve...
4767
Count | Capacity
0.00
DataSize(GB)
(Blank)
VCPUs
Rtn Preference: MGN - Stand...
4301
Count | Capacity
2,498.64
DataSize(GB)
(Blank)
VCPUs

Azure Services - Overall Capacity Utilization (Last 1 Month)												VCPUs		
Date	6/24/2025 12:00:00 AM						6/25/2025 12:00:00 AM							
Service	Count	Quantity	UOM	VCPUs	DataSize(GB)	Cost	Count	Quantity	UOM	VCPUs	DataSize(GB)			
Virtual Machines	10740	66,493.16	1 Hour	186086	0.00	67,732.77	10499	66,584.85	1 Hour	175795	0.00	Virtual Network Peering - Int...		
Storage	31403	108,011,070.78	1		34,826,677.35	24,702.45	31475	107,372,949.87	1		34,906,812.36	4035 Count Capacity		
Unassigned	15	1,446.92	Unassigned	37	0.00	73,790.35	14	1,680.00	Unassigned	35	0.00	4,743.55 DataSize(GB)		
Azure NetApp Files	14	57,974,784.00	1 GiB/Hour		2,415,616.00	8,543.97	14	57,974,784.00	1 GiB/Hour		2,415,616.00	(Blank) VCPUs		
Virtual Machine Licenses														
SQL Database	1145	50,617.95	1 GB/Month		128,549.44	4,041.61	1145	50,532.62	1 GB/Month		126,614.55	Virtual Network Peering - InL...		
Azure Databricks	28	14,283.21	1 Hour		5,393.45	30	11,952.74	1 Hour			0.00	4035 Count Capacity		
Azure App Service	3024	16,282.13	1 Hour		0.00	3,546.94	3021	16,271.06	1 Hour		0.00	18,148.29 DataSize(GB)		
Backup	458	128,481.57	1 GB/Month		3,904,694.02	3,910.18	459	128,658.84	1 GB/Month		3,910,085.47			
Bandwidth	10004	41,055.67	1 GB		41,055.67	2,881.02	9940	33,952.83	1 GB		33,952.83			
Azure Synapse Analytics	11	1,667.58	1 Hour		76,407.94	63.64	11	1,667.38	1 Hour		76,898.52			
Microsoft Defender for Cloud	13308	565,033.80	1		30.46	3,709.46	13406	570,070.64	1		0.66			

➤ Azure Cost | Capacity | Optimization Management (ACOM) |

▪ Implementation Guide:

- “ACOM-Advanced Insights (PDQ)” is the Frontend Power BI Template App for "ACOM-Advanced Insights | Azure Cost-Capacity-Optimization Management“ Service, listed as a "**Contact Me**" offer in Microsoft Azure Marketplace and AppSource
 - Azure Marketplace - [ACOM-Advanced Insights | Azure Cost-Capacity-Optimization Management - Azure Marketplace](#)
 - AppSource - [ACOM-Advanced Insights | Azure Cost-Capacity-Optimization Management - AppSource](#)
- As a Pre-requisite, the Service must first be Initiated & Agreed upon, click on the "**Contact Me**" radio button and Submit a request
 - Post an established Service Contract Agreement, the Backend Data Connect Service will be initiated & configured in the Customers Power BI Tenant
 - An “App installer link” for “ACOM-Advanced Insights (PDQ)” App will be shared for installing the Frontend App in the Customers Power BI Tenant
 - You will see a dialogue box "Install this Power BI app?" with an error message "This app hasn't been listed on AppSource." → Proceed to Install the App
 - Installation of the App will start, after a while you will see a dialogue box "Your new app is ready!", App - "ACOM-Advanced Insights (PDQ)" has been successfully installed" → click on "Go to app"
 - You can either click on the "Go to app" or go to the "Apps" section of the Power BI online service → click on the newly installed App - "ACOM-Advanced Insights (PDQ)"
 - The App will open and will display a message as "You have to connect to your own data to view this report" & a "Connect" radio button
 - Click on the "Connect" radio button → this will open a dialogue box "Connect to ACOM-Advanced Insights (PDQ)" → click "Next"
 - Clicking "Next" will move to "You are connecting to" section within the same dialogue box → select "Authentication method" as "OAUTH2" → "Privacy level setting for this data source" as "None" → click on "Sign in and connect"
 - Clicking on "Sign in and connect" → will open a dialogue box "Pick an account" → select the same account that you have already signed into your Power BI online service
 - All the Pre-Fabricated Dashboard Reports will now be auto populated with the Cost-Capacity-Optimization Telemetry data
 - The ACOM-Advanced Insights (PDQ)” App can now be shared to relevant Users with defined RBAC

▪ Support:

- For Support related Issues / Feedback, go to - <https://upladders.in/contact-us/>
- Or send a email with details to sadmin@i3ce.com & sanjay.gera@upladders.in

i3CEP

NoCode Innovation



Azure Service Operations Management



Azure Service Delivery Management



| sanjay.gera@upladders.in

| sadmin@i3ce.com

Azure Cost | Capacity | Optimization Management (ACOM)