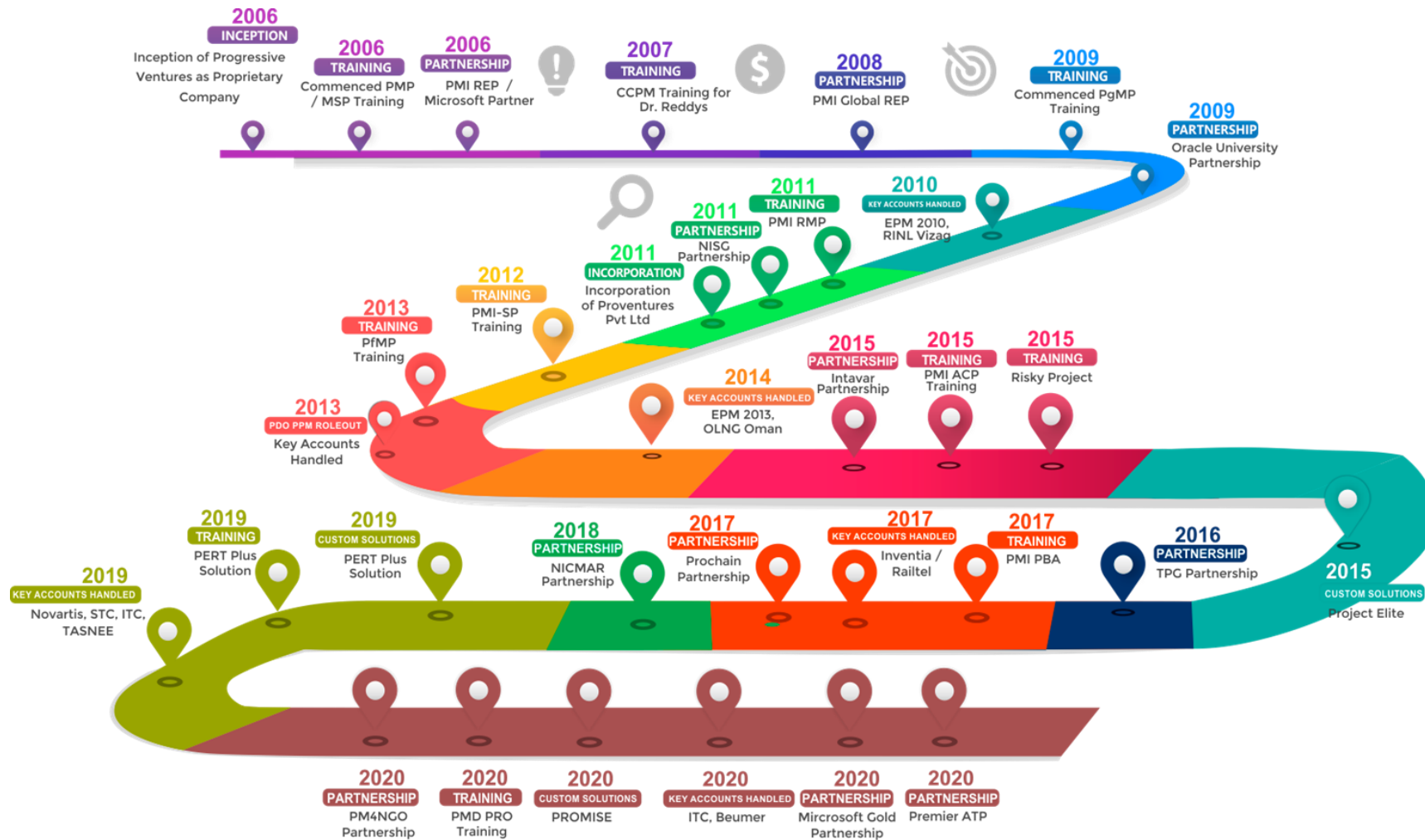




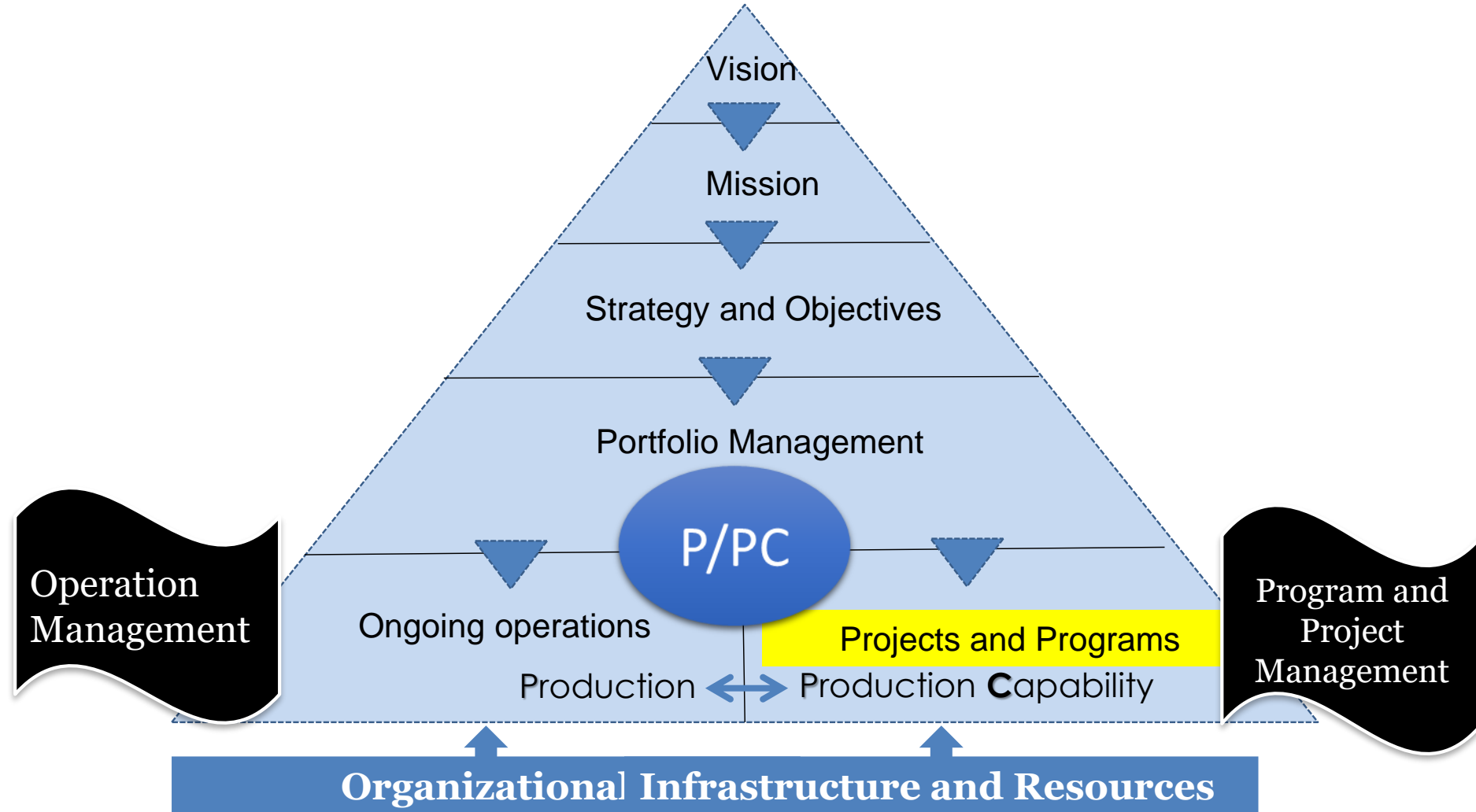
PROMIS

Project Online Management
Information System for NGOs

About Proventures



Organizational Project Management and PMO



Solution Overview

Solution Scope / Capability



Manage your projects
from anywhere
(Project on-line)



Build and deploy integrated Schedule :
task based, resource loaded, cost
loaded, and risk loaded schedule
(Project Professional)



Pool your resources and
share across multiple projects
for optimum utilization
(Resource center)



Powerful analytics using Microsoft
Power BI tightly linked to the solution
with built in reports
(Report center)



One-year Licensing, FastTrack
implementation, Training, Hypercare
support – all in one package
(Scope of the solution)



Implementation

Implementation lifecycle / Methodology

ID	Task Name	Week 1	Week 2	Week 3	Week 4
1	Sales closure and execute contract	█			
2	Requirements documentation and Customer sign-off		█		
3	Implementation and Publish the sample project			█	
4	User training on Client's environment/portal and hand over				█



Sales

- Begins with discussion and end at Proposal
- 1-2 weeks



Contract

- Scope & commercials agreed
- Contract signed
- First payment done
- 1-2 weeks



Delivery

- Implementation
- Testing and resolution
- Customer UAT
- 2-4 weeks

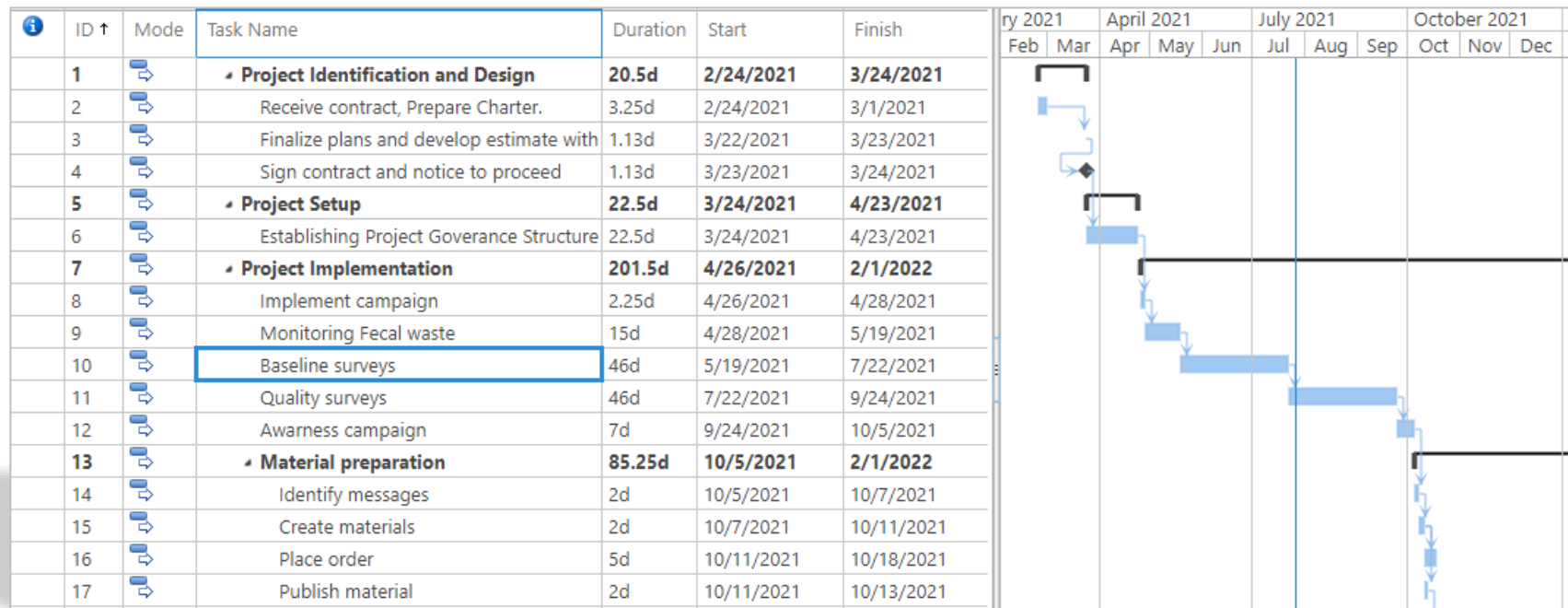


Support

- User training
- Customer use the solution
- Support & Transition
- 3 months to 12 months

Features & Benefits

- Develop & Manage Schedule, Resources and Control Cost.
- Helps you optimize the resources and saves both your valuable time and money.



Features & Benefits

- Capture and maintain all important details like Project Charter, Stakeholder Register, Governance Structure, Risks, Issues, RACI, Lesson Learned, Upload Documents, have proper project closure.

Risks

ITEMS LIST

New Item New Folder Create Projects View Item Edit Item Shared With Delete Item Attach File Alert Me Workflows Approve/Reject Tags & Notes

New Project Server Manage Actions Share & Track Workflows Tags and Notes

+ new item or edit this list

All Items All Active Risks All Closed Risks ... Find an item

ID	Title	Assigned To	Status	Exposure	Category	Due Date	Risk Exposure
Count= 4							
1	Material delay	Prashanth M	(1) Active	50	Technical/operational/infrastructure	2/20/2021 12:00 AM	Transfer
2	handling potentially dangerous materials	Mohammed Gazala Jabeen	(1) Active	0.9	Technical/operational/infrastructure	2/23/2021 12:00 AM	Accept
3	technical risk	Sanjay Kumar C	(2) Postponed	80	Economic/financial/market	3/16/2021 12:00 AM	Avoid

Features & Benefits

- Make a Current state Analysis using the Problem Tree.

The screenshot displays the 'Problem Tree' interface for PM4NGOs. On the left is a navigation menu with options like Projects, Tasks, Resources, Donor Details, Problem Tree, Solution Tree, Logical Framework, Asset Register, Monitoring Plan, Change Request, Benefit Register, Reports, and Power BI Reports. The main area shows a table of items with the following data:

✓ Edit	Project Name	Problem Description	Causes	Effects
	Drinking water plant	Impure water	1. Industrial waste dumped into the river, 2. Accidental Oil Leakage, 3. Dumping of human waste.	1. Low minerals, 2. Poor health, 3. Danger to water in-habitants, 4. Infant mortality, 5. Increased death rate.
	Construction of School Building	Very poor quality constructed schools.	1. Fluctuation in price of material, 2. Improper planning, 3. Delay in approval of payment, 4. Shortage in material	1. Unemployment, 2. Poor Quality completed work, 3. Time Over run of the project, 4. Dispute between parties(Client,Contractor,Consultant)
	Delta River Project	Polution of Delt River water	1. Discharge of Human Fecal Waste, 2. Industrial Sewage, 3. Storm Sewage	1. Impure drinking water, 2. Unhealthy people, 3. People die out of contaminated diseases, 4. Infact Mortality, 5. Destroys Aquatic life
	Construction of baby day care center building	High Staff Turn-over rate	1. Staff seek Government Jobs, 2. Staff seek high paid jobs	1. Low Employee Morale, 2. Recruitment Cost increase,

Features & Benefits

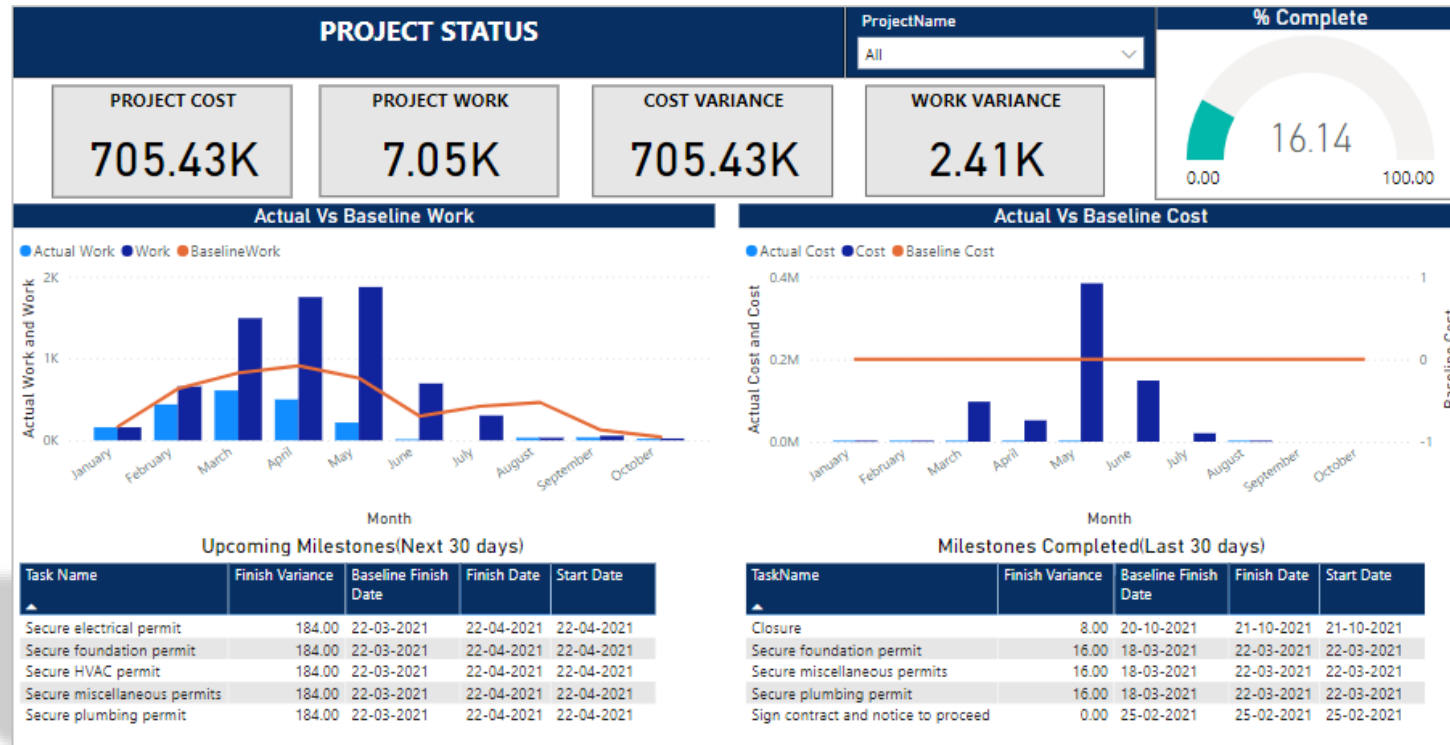
- Make a Future state Analysis using the Solution Tree.

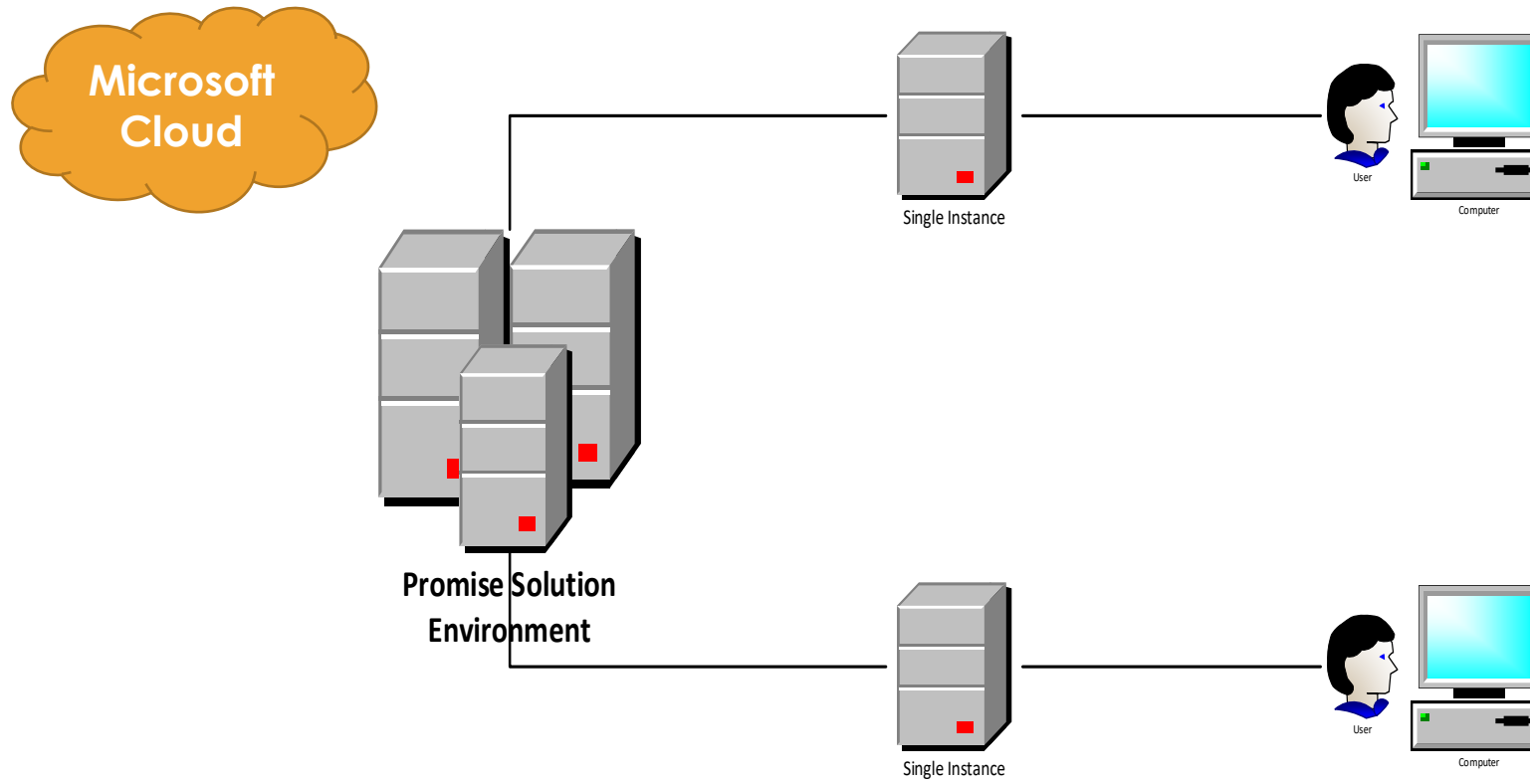
The screenshot displays the 'Solution Tree' interface for PM4NGOs. On the left is a navigation menu with options like Projects, Tasks, Resources, Donor Details, Problem Tree, Solution Tree (highlighted), Logical Framework, Asset Register, Monitoring Plan, Change Request, Benefit Register, Reports, and Power BI Reports. The main area shows a '+ new item or edit this list' button and a search bar. Below is a table with columns: Edit, Project Name, Objective, Means, Output, and Ends.

✓ Edit	Project Name	Objective	Means	Output	Ends
	Construction of School Building	To provide a Quality Class Rooms.	Prepare a Class room plan.	Quality schools have been built.	Positive response from the parents.
	Construction of baby day care center building	The primary function of a daycare center is to provide safe and secure environment with quality caregivers.	Staff is involved in taking care of children.	Kids are mentally strong.	Other Children Parents are encouraged to join their kids.
	Drinking water plant	A Hygenic water supply for people.	Filtering the water.	People are aware of maintaing clean water.	A healthier people.
	Delta River Project	To clean the fecal waste from the river.	Deliver public sanitation awareness campaign Mobilize communities for latrine construction Prepare engineering specifications Locate optimal sites for latrine construction Etc	Quality latrines constructed and being used by community members	Improved health of under-fives, specifically among low-income families who live by the river

Features & Benefits

- Showcase your project status through the Power BI Reports.





Applications

- Applicable for all the developmental projects irrespective of the domain undertaken by the Not-for-Profit Organizations



Thank You

From Proventures