



BUILT FOR PEOPLE-DRIVEN ORGANIZATIONS

Product Presentation I 2019



Product Overview

Built with People in Mind

Your employees are your greatest asset, your brand, and your customers. They are the driving force behind your success. With this in mind, we have created Raiser to help you balance your business goals with your individual employee needs.

Redefine Your HR with Raiser

As an end-to end Human Resource Management System (HRMS) Raiser was made to transform both HR and employee experiences of small to mid-size progressive organizations.

It is an all-in-one solution for effective management of the entire hire-to-retain lifecycle.

Raiser comes with built in modules of **Employee Database Management, Leave Management, Employee Self-Service, Recruitment, Projects**—all featuring custom configurations, approval workflows, multi-tenant capabilities and multi-granular reporting features.

Value Proposition

Raiser is a human-centric system and people are the key asset of it. With this in mind, every aspect of the system is centered right around People to engage and manage them in the best possible way by creating a better workplace for them.

Raiser engineers and in-house HR experts have invested all their **accumulated mindset and the best practices** to embed unique software features on the top of the industry standard HRMS toolset to deliver a different experience to the user.

The software was first and foremost **deployed internally for our organization**. Hence, we were able to eliminate all the glitches and malfunctions and to enhance the software capabilities towards delivering the best user experience for ourselves.

As a major advantage to the basic HRMS functionalities, Raiser comes with a complex **Recruitment** module covering from requisition to the onboarding cycle. Another unique feature is the **Resource Planning tool**, which enables to have a holistic view of all your company resources.

Market Positioning

Target Niche Market

Raiser targets mid-size prospective businesses (up to 500 employees) across diverse industries. Whilst we do not narrow down our focus to any specific industry vertical, multi-national, multi-geographical companies working in agile environments will be ideal match for us.

Target Geographies

Raiser target prospective clients from USA, Canada, European Countries, Russia, Ukraine and from Armenia.

Could Deployment and SaaS Sales Model

Raiser is a cloud solution and is hosted with SaaS licensing model. In the initial go-to-market stage, we will generate sales through the SaaS Sales Self-Service Model predominantly focusing on generating revenue at a low average selling price (ASP) with free trials and freemium offers.

Product Marketing

Marketing will be largely focused on creation of brand awareness, educational content for the entire buying process- from awareness to deal close.

Support

After product release, full pre-sales and post-deployment support team infrastructure will be set up to provide seamless customer experience.

Raiser Delivered Benefits

Intuitiveness with no compromise on functionality.

- Management of employee multi-layered data.
- Real-time visibility on personnel leave requests.
- Handy Employee Self-Service.
- Seamless talent recruitment flows.
- Right metrics at your fingertips
- Role-based access permissions and configurations
- Multi-tenant and multi-location company structure
- Mobile version of the core functionalities

Core Modules and Features

Staff Management

- Employee Centralized Data Management
- Employee Document Management
- Employee Lifecycle Management
- Automated Alerts and Workflows

Talent Acquisition

- Requisition Management
- Dynamic Approval Routing Process
- Job Postings
- Applicant Tracking System
- Candidate Sourcing and Recruiting
- Configurable Talent Pipelines
- Recruitment Related Metrics

Leave Management

- Leave Request Tracking
- Real-time Leave Requests Processing
- Actionable Leave Calendars
- Custom Time Off Types
- Configurable Approvals Routing
- Location Specific Holidays Calendar
- Multi-level Leave Dashboards

Projects

- Resource Planning tool
- Projects and Team data management
- Timesheets
- Projects Related Dashboards

Employee Self-Service

- Own Data Maintenance
- Time Off Requests
- Role-based Dashboards on Leave Balances and on Important Contacts
- Managers Role-specific ESS Features

Settings and Configurations

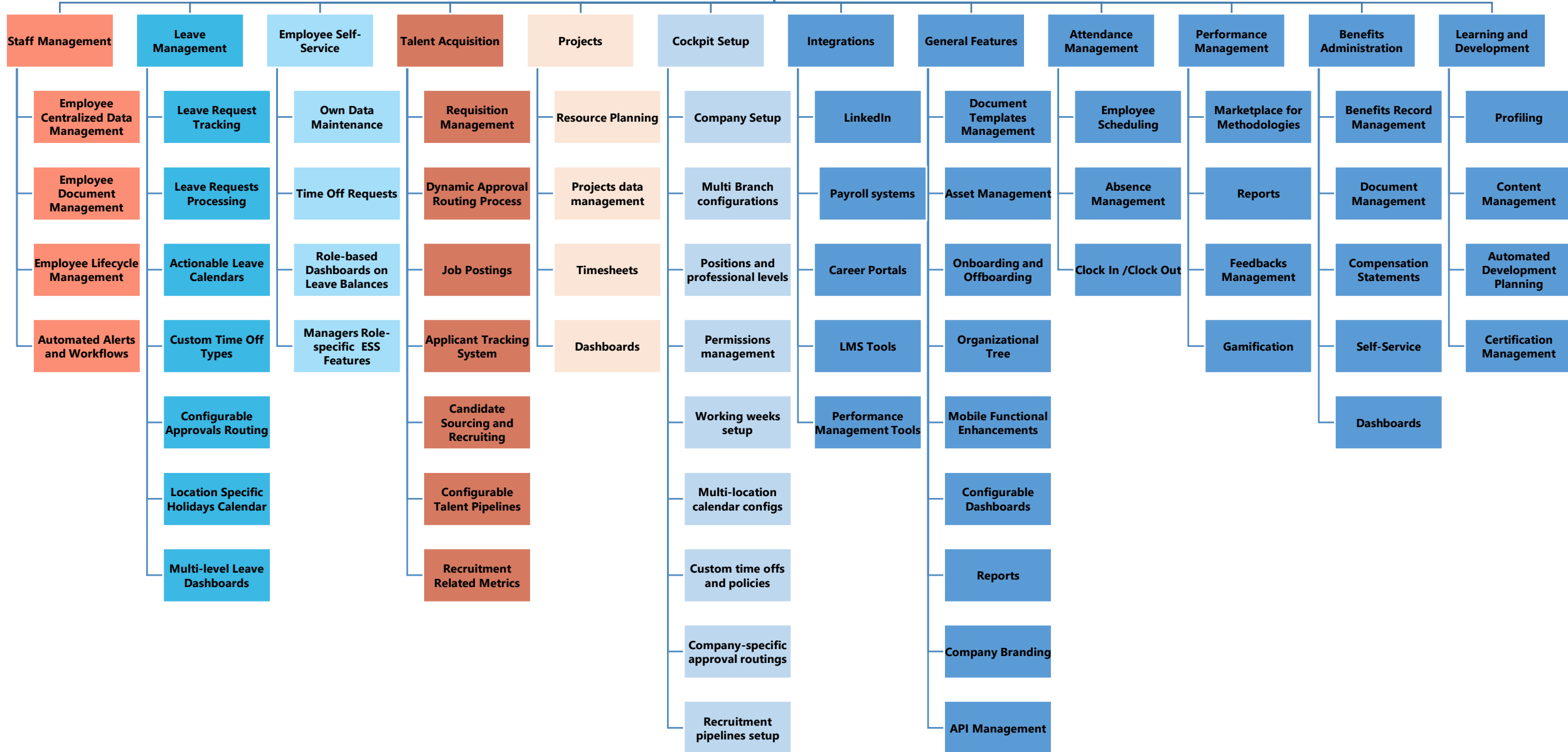
- Company Setup
- Multi-branch configurations
- Positions and professional levels
- Permissions management
- Working weeks setup
- Multi-location calendar
- Custom time offs and policies
- Company-specific approval routings
- Recruitment pipelines setup

Tree View of Functional Architecture

Raiser Functional Architecture

Available Modules and Features

Modules and Features Planned by Roadmap



A stylized space-themed illustration on a dark blue background. It features several light blue, rounded, cloud-like shapes scattered across the lower half. In the center, there is a blue planet with a white ring, resembling Saturn. Above it, a blue comet with a white tail streaks across the sky. A bright orange sun is partially visible behind a cloud at the bottom center. Numerous small white stars and dots are scattered throughout the scene.

Ready to reinvent your HR?

Contact us for more information

Komitas Ave. 54V,0051,

Yerevan, Armenia

+374 11 998050

info@raiser.global

www.raiser.global