

# Wipro's Services for ADME (Azure Data Manager for Energy) deployments and value-realisation



A cloud based microservice architecture for Subsurface & geo-technical data with analytics on an industry standard, managed service platform

Leveraging the full benefits of transforming to a data-centric operation

Benefits of an integrated cloud data platform for the energy sector



01

Unlock data across upstream, midstream and downstream operations.



02

Release intelligence trapped in legacy systems and data silos



03

Use the widest, most relevant actionable data from across the enterprise



04

Share data across systems, applications and teams

# Presentation Structure

1. A holistic approach to deriving value from OSDU
2. Wipro Vision and Credentials
3. End-to-end Services to support ADME deployments and value realisation



1.

# A holistic approach to deriving value from OSDU



# A holistic approach to deriving value from Microsoft's ADME OSDU Platform



*Subsurface and wells data integrated and accessible in one data platform*

**Reducing data silos**

*Workflows executed cross platform, taking advantage of cloud-native solutions*

**Workflows in the cloud**

*User will have access to powerful search capabilities, facilitates Metadata enrichment and QC*

**Access to all meta data**

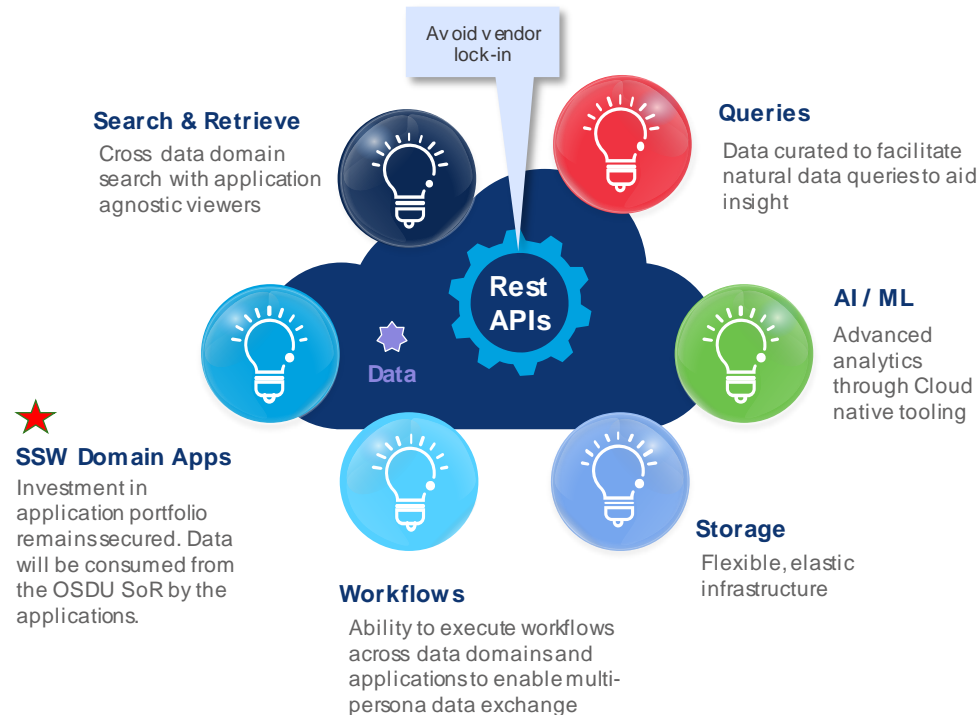
*Vendors, operators and open source projects can develop software on the OSDU data platform*

**Competition and collaboration**

## Future end state

Cloud-native subsurface & wells data platform reference architecture

## OSDU System of Record



2.

# Wipro's Vision & Credentials



# Wipro OSDU Vision

## 1 Platform (ADME)

Future proof, analytics enabled, data foundation platform that:

- provides immediate and tangible benefits to the user community to fuel adoption; and
- facilitates collaboration and access to new and emerging technologies.

## 3 Data & Legacy

Cater for the volume of legacy data and the anticipated explosion in new data volumes resulting from the deployment of fibre optics, down-hole sensors, IOT and other technologies.

## 2 Open

Minimize technology “lock-in” by liberating the data from application silos.

# Wipro OSDU Credentials




**Member and Contributor**



**Global Practice**



**Acceleration Framework**




**Ecosystem**




**Workflows in the Cloud**



**Preferred Systems Integrator**

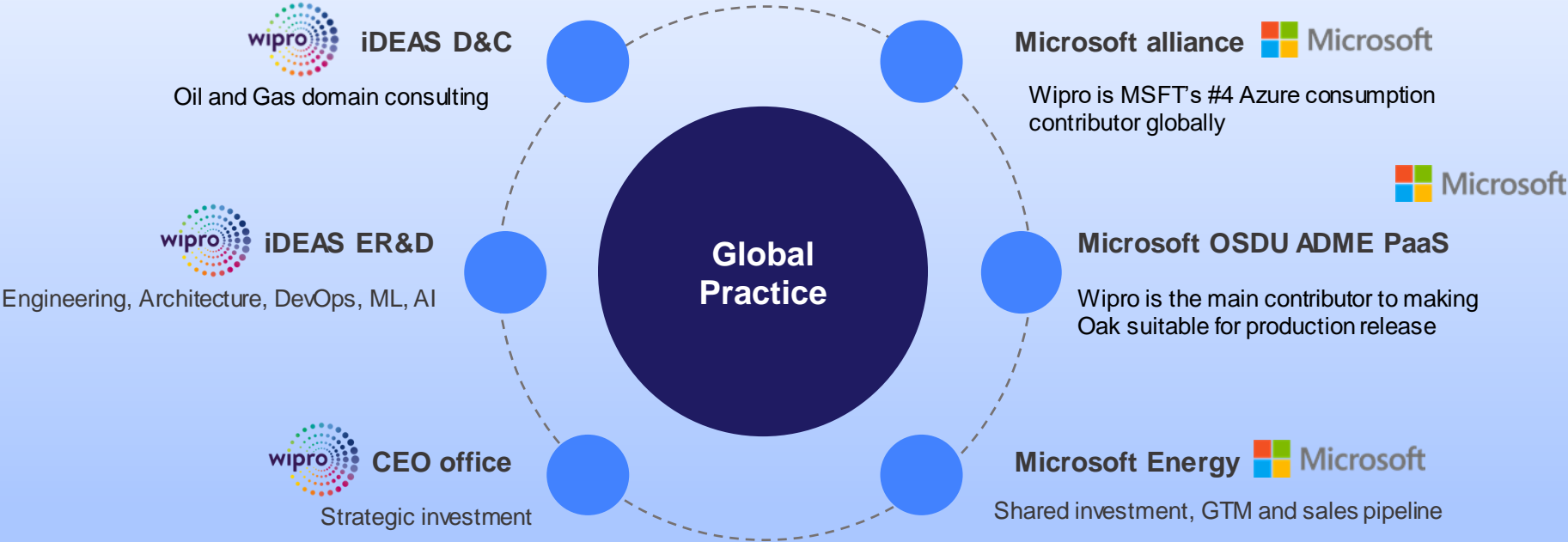


**Clients**



**FinOps**

# Wipro OSDU Practice





# Wipro OSDU Partner Ecosystem



**Joint Value**

**Thought Leadership**

**Executive Commitment**

All product names, logos, and brands are property of their respective owners.

3.

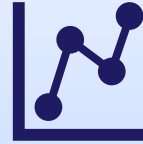
# Wipro's Services to support value realization from ADME adoption



# Wipro's Value Add Services - Overview

## ADME PLATFORM

- Onboarding, deployment
- Platform support & release management
- Development, testing, acceptance and production (DTAP) environments and process setup



## INTEGRATION

- Co-development of API's
- Application migration factory
- New workflows in the cloud



## DATA

- Data mapping
- Migration factory
- Governance setup

## CONSUMPTION

- Workflows support
- Workflow migration factory

# Wipro's OSDU offering

3/3

## OSDU squad

Making available the entire breadth of Wipro's OSDU intelligence and insights

- Potential to deploy an in-house OSDU Team to manage the end-to-end innovation, creation, development, deployment and testing process, operate as internal CoE
- Articulate client's requirements & priorities towards OSDU Forum and Cloud Service Providers
- Access to best-in-class engineering, domain consulting, AI and ML expertise



# Wipro's Service offerings across ADME value realisation process

Programme Phase



## Adoption Acceleration – data types, data packages and workflows

- Auto-Schema onboarding – Ingesting Subsurface & Wells datatype into the OSDU (SOR, Artefacts, DDMS, ...), enabling cross dataset analytics and algorithms
- Pre-cursor for moving business workflows to OSDU



# Wipro's OSDU offering

2/3

## Data migration & Quality assurance

- Migrate selected data types to mirror the legacy solutions and determine the delta
- Working on a Region-by-Region basis at scale, migrate data from incumbent storage (applications and servers) to an OSDU regional system of record (SoR)



## Seismic to OSDU

- Microsoft – Wipro – NetApp are collaborating to build an E2E service model which provides insights into storage options, performance, and cost. Wipro invites operators to participate in this partnership to identify requirements and mitigate operator challenges
- Bluware – Wipro VDS workflow for OSDU



## Enterprise integration

- Integration of third party OSDU ready applications and services
- Enterprise Data Platform & Data Warehouse integration



# Wipro Ingestion Service (WINS) Framework – Accelerate adoption

#	Requirement	Accelerator / Components Used
1	Platform Onboarding	Data management application
2	Dataset and User Onboarding	Data management application
3	Data Migration	Raw Data Processing Service, Ingestion Workflows (DAG), Data Mapping and Data Transformation Framework using ADF
4	Data Ingestion	Raw ingestion workflows, manifest generation service, bulk ingestion utilities, data management application
5	External data access and publish scenarios	Publish workflows, raw data ingestion workflows
6	Application integration – loose integration	Data upload/download utilities, raw data ingestion workflows, blob triggered ingestion
7	Data discovery	Chatbot interface trained with OSDU ontology



**Thank you**