

# Building the Ultimate Meeting Room Experience



**Xylos**



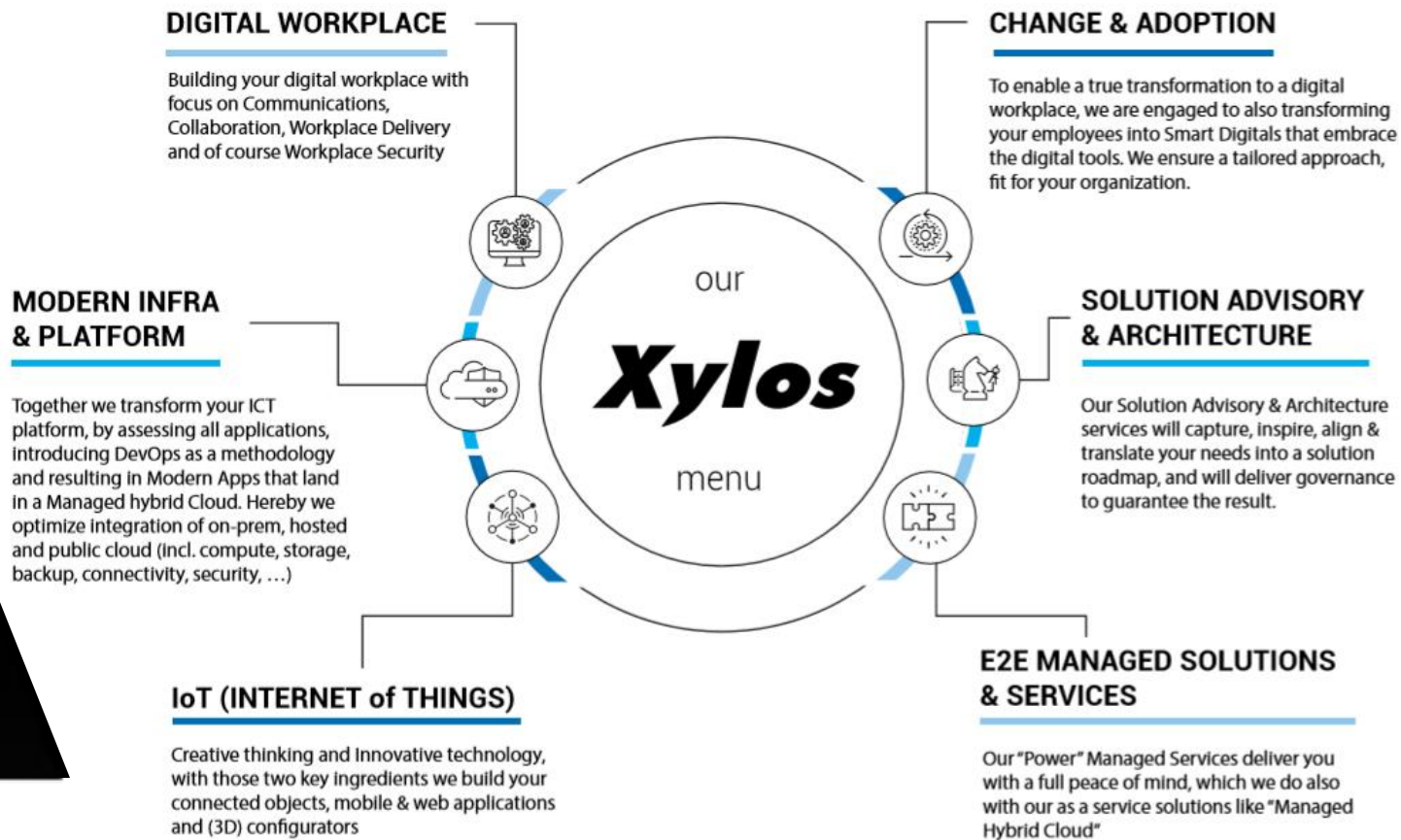
# Kristof Maes

Product & Solutions Lead

Advanced Workplace,  
Communications

[kristof.maes@xylos.com](mailto:kristof.maes@xylos.com)

+32 491 15 79 30





Chats



Meetings



Calls



Files



Apps &  
Workflows



## Microsoft Teams Escape e-game

- **Goal:** Helps accelerating MS Teams onboarding by creating **awareness** and **desire** among your employees on using the MS Teams tool.
- **The concept**



An e-game that is available in the [Teams Store](#)



Uses gamification techniques to accelerate onboarding of users on MS TEAMS  
> [Activation and usage](#)



Based on the existing Xylos Teams Escape Game delivered and facilitated by Learning Consultants

## Kristof Maes

Product & Solutions Lead

Advanced Workplace,  
Communications

[kristof.maes@xylos.com](mailto:kristof.maes@xylos.com)

+32 491 15 79 30



**The OASE Learning platform: designed to empower your employees to increase their output in order to create a truly modern workplace.**



1000+ short, informative and educational animations



Custom learning journeys tailored to staff's needs



Easy to use filters to help users find what they need



In-depth reporting to provide valuable user insights

**Xylos**



1. Interop vs Native

2. Native Microsoft Teams Room Solutions

3. How we build the Ultimate Meeting Room Experience

# Interop vs Native

# Video Conferencing Interop with Microsoft Teams

## INNER SPHERE

Connecting your existing standards-based (SIP/H.323) video conferencing endpoints with your Microsoft Teams meetings

- Investment Protection
- Introduce “One Touch Join”



## OUTER SPHERE

Enable your external partners to connect on your Microsoft Teams meetings with their standards-based (SIP/H.323) video conferencing endpoints

- Universal access to your online meetings

### [Join Microsoft Teams Meeting](#)

+32 2 789 65 96 Belgium, Bruxelles/Brussels (Toll)

Conference ID: 749 252 335#

[Local numbers](#) | [Reset PIN](#) | [Learn more about Teams](#) | [Meeting options](#)

Join with a video conferencing device

323972281@t.plcm.vc VTC Conference ID: 1213316321

[Alternate VTC dialing instructions](#)

# Video Conferencing Interop with Microsoft Teams

## HOW DOES IT WORK

### Join Microsoft Teams Meeting

+32 2 789 65 96 Belgium, Bruxelles/Brussels (Toll)

Conference ID: 749 252 335#

[Local numbers](#) | [Reset PIN](#) | [Learn more about Teams](#) | [Meeting options](#)

### Join with a video conferencing device

323972281@t.plcm.vc VTC Conference ID: 1213316321

[Alternate VTC dialing instructions](#)

### Join Skype Meeting

[Trouble Joining? Try Skype Web App](#)

#### Join by phone

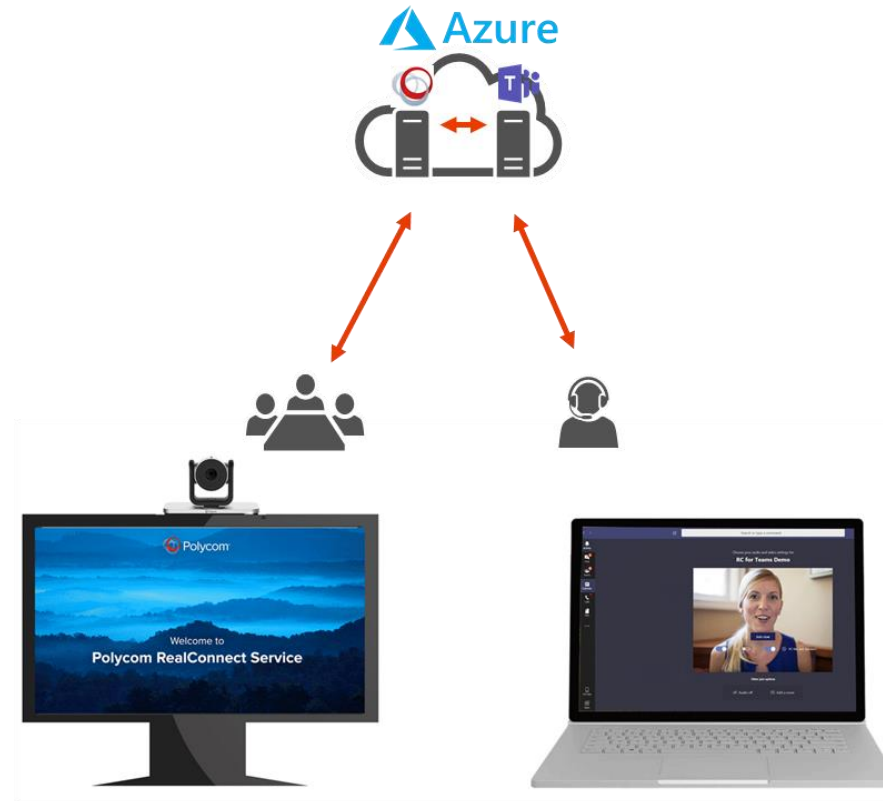
+3235437565,,6686899# (Belgium)	English (United States)
+3222641345,,6686899# (Belgium)	English (United States)
+3235437550,,6686899# (Belgium)	English (United States)

[Find a local number](#)

Conference ID: 6686899

[Forgot your dial-in PIN?](#) | [Help](#)

To join this meeting from a video conferencing device, utilize the numeric 'Conference ID' provided in this invitation. SIP and H.323 systems can call 323972281.<ConfID>@h.plcm.vc



VTC connected to Teams meeting via Interop Service

Teams experience shown

# Native Microsoft Teams Rooms

A range of Teams devices for every space and working style

## Teams Experience

simple transitions and consistent experiences across all device types

## Inclusive Meetings

intelligent devices give everyone a voice, wherever they may be

## Certified Hardware

high quality and deeply integrated meeting experiences in any space

## Always Ready

reliable, manageable and up-to-date systems ensure meetings just work



### Personal Devices



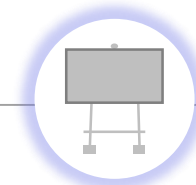
Audio & Video Peripherals



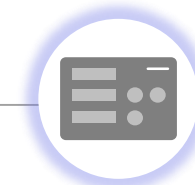
PCs and Mobile



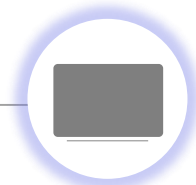
IP Phones



All-in-one Collaboration Devices



Room Systems



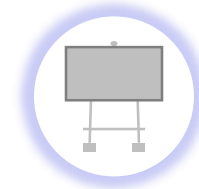
Large Screen Displays

### Shared Devices



# Native Microsoft Teams Room Solutions

# Native Microsoft Teams Room Solutions



All-in-one  
Collaboration Devices



Room  
Systems



Large Screen  
Displays



## Skype for Business

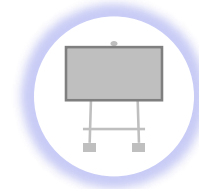
- Validated quality and features
- Shared supported by Microsoft and OEM
- Best-in-Class device makers
- Tested by Independent labs



## Microsoft Teams

- Wide portfolio of devices
- High quality audio and video performance
- Integration with hardware Teams button
- Calling and meeting features validate on certified devices
- Reliable device manageability and up-to-date software

# Native Microsoft Teams Room Solutions



All-in-one  
Collaboration Devices



Room  
Systems



Large Screen  
Displays

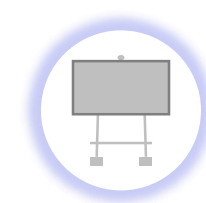


- Skype for Business uses a SIP-based communications protocol
- Initially designed, developed and deployed as server-client application on-premises
- Allowed partners to develop interop based on SIP
- Both native devices, Skype Room Systems (SRS), and third-party interoperable devices (IP Phones, VTCs) supported



- Designed, developed and deployed for the Azure cloud
- Microsoft Teams uses a REST-based protocol
- Same client infrastructure across desktop, mobile, web
- Managed ecosystem for collaboration and communication
- **Native Devices (SRS, IP Phones) run the Teams client to support capabilities**

# Native Microsoft Teams Room Solutions



All-in-one  
Collaboration Devices



Room  
Systems



Large Screen  
Displays

## Meet Microsoft Surface Hub 2S | Teamwork without boundaries

Sleek, slim design with the thinnest edge and bezel of any device in its class

A brilliant 4K+ screen, 4K camera, and enhanced speakers and mics

A great platform for Microsoft Teams and Skype for Business

Next level brainstorming with Microsoft Whiteboard, a persistent digital canvas



Sign in to access OneDrive files or project content wirelessly with Miracast

Interact naturally with Surface Hub 2 Pen and touch functionality

Fully integrated Windows 10 device—natively run must-have Microsoft and third-party apps

Experience mobile, cordless teamwork with Steelcase Roam™ Mobile Stand and APC™ Charge Mobile Battery

**Xylos**

# Native Microsoft Teams Room Solutions



All-in-one  
Collaboration Devices



Room  
Systems



Large Screen  
Displays

## MICROSOFT TEAMS ROOMS (MTR)



CRESTRON



hp



Lenovo



logitech



Yealink



## MICROSOFT TEAMS COLLABORATION BARS



Poly Studio X30 and X50



Yealink VC210



## MICROSOFT TEAMS PERSONAL/HUDDLE



**Xylos**

# Native Microsoft Teams Room Solutions

All-in-one  
Collaboration Devices

Room  
Systems

Large Screen  
Displays

## Windows Collaboration Displays

- Large screen displays by certified partners with integrated pen, touch, camera, speaker, and mic technology
- Connects to PCs or Microsoft Teams Rooms
- Augment Microsoft Teams Rooms with interactivity and the Microsoft Whiteboard
- IoT endpoint for space management with Azure Digital Twins



Up to 86"



BYOD



Surface Hub  
Side of Room



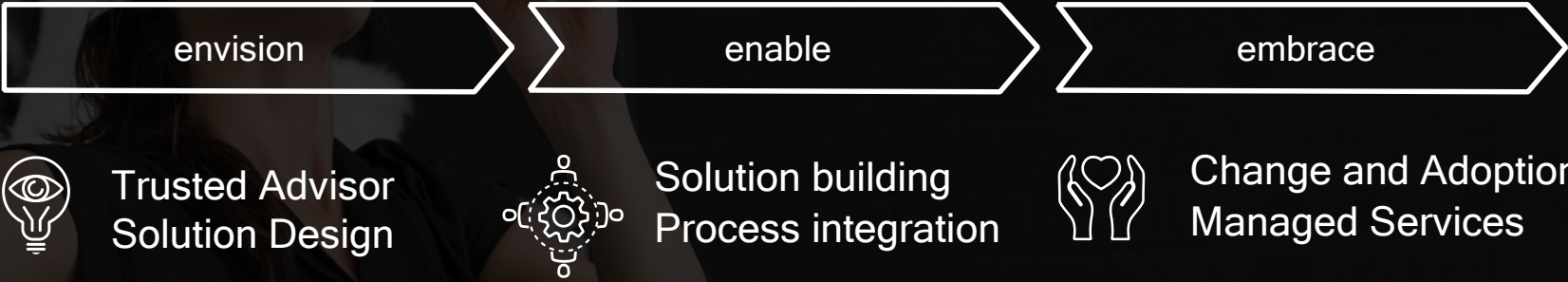
MTR

**Xylos**

# How we build the Ultimate Meeting Room Experience

# The Ultimate Meeting Experience by Xylos

*Being a leading company that offers, develops and implements total, innovative ICT solutions based on clear business value and that can support customers throughout the entire lifecycle of the solution.”*





envision

TECHNOLOGY TRENDS / *Unified Collaboration doesn't just benefit teams - It drives business goals*



Improved team  
productivity



Lower  
costs



Easier management  
& administration



Improved user  
experience

envision

## SOLUTION DESIGN - ACCELERATORS



**CLOUD**  
*platform features*  
*management*  
*analytics*



**LOWER TCO**  
*huddle room*  
*solutions*



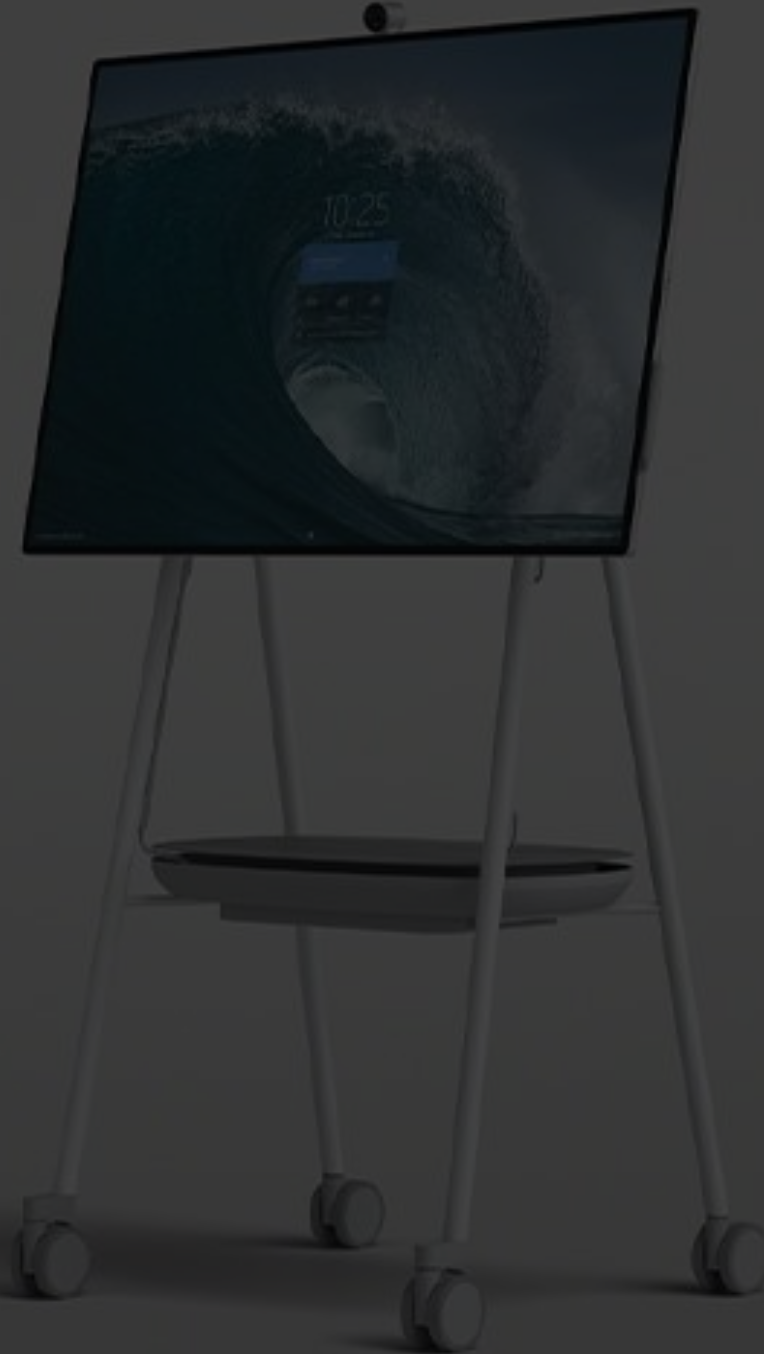
**UX**  
*any device*  
*business integrated*

**COLLABORATIVE**  
*from communication*  
*to collaboration*

MANAGED SERVICES ”

## Surface Hub 2S as a Service

- *Surface Hub 2S*
- *Steelcase mobile trolley*
- *Implementation services*
- *Change & Adoption services*
- *Managed services*



care.grow.passion.

***Xylos***