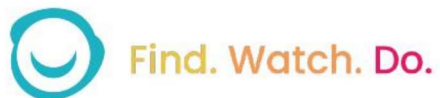
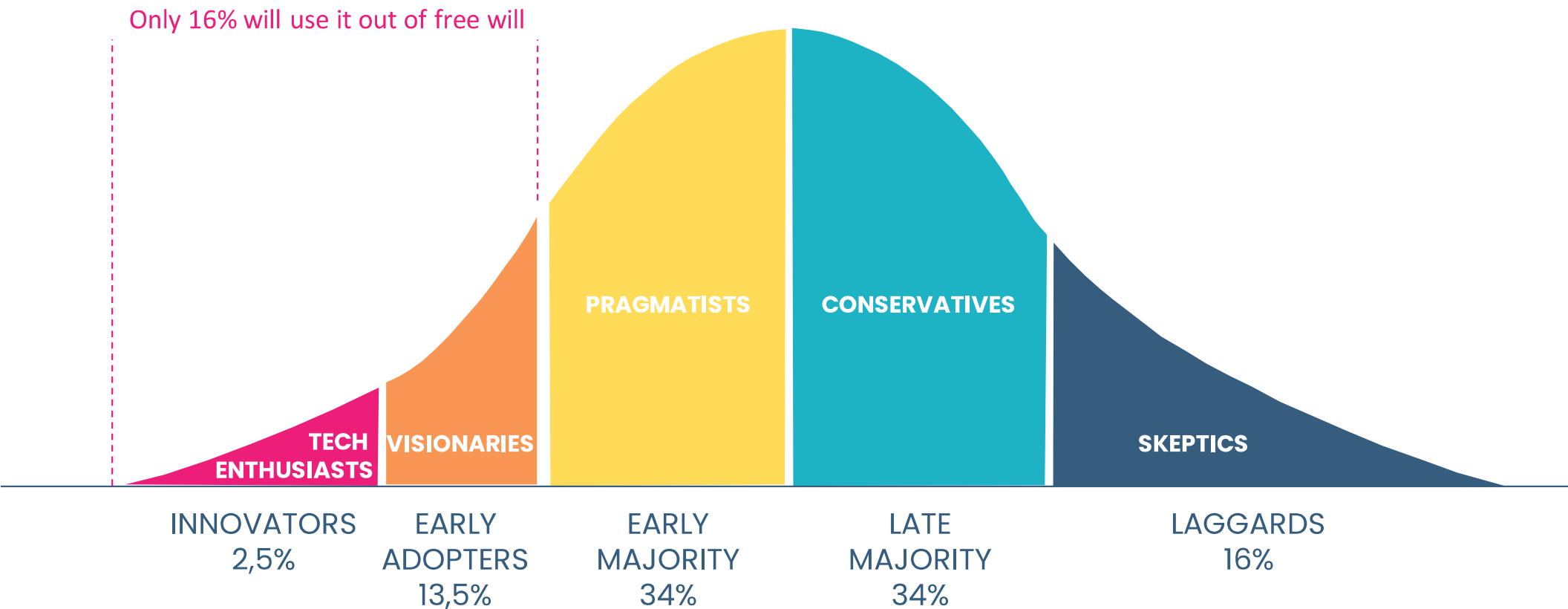


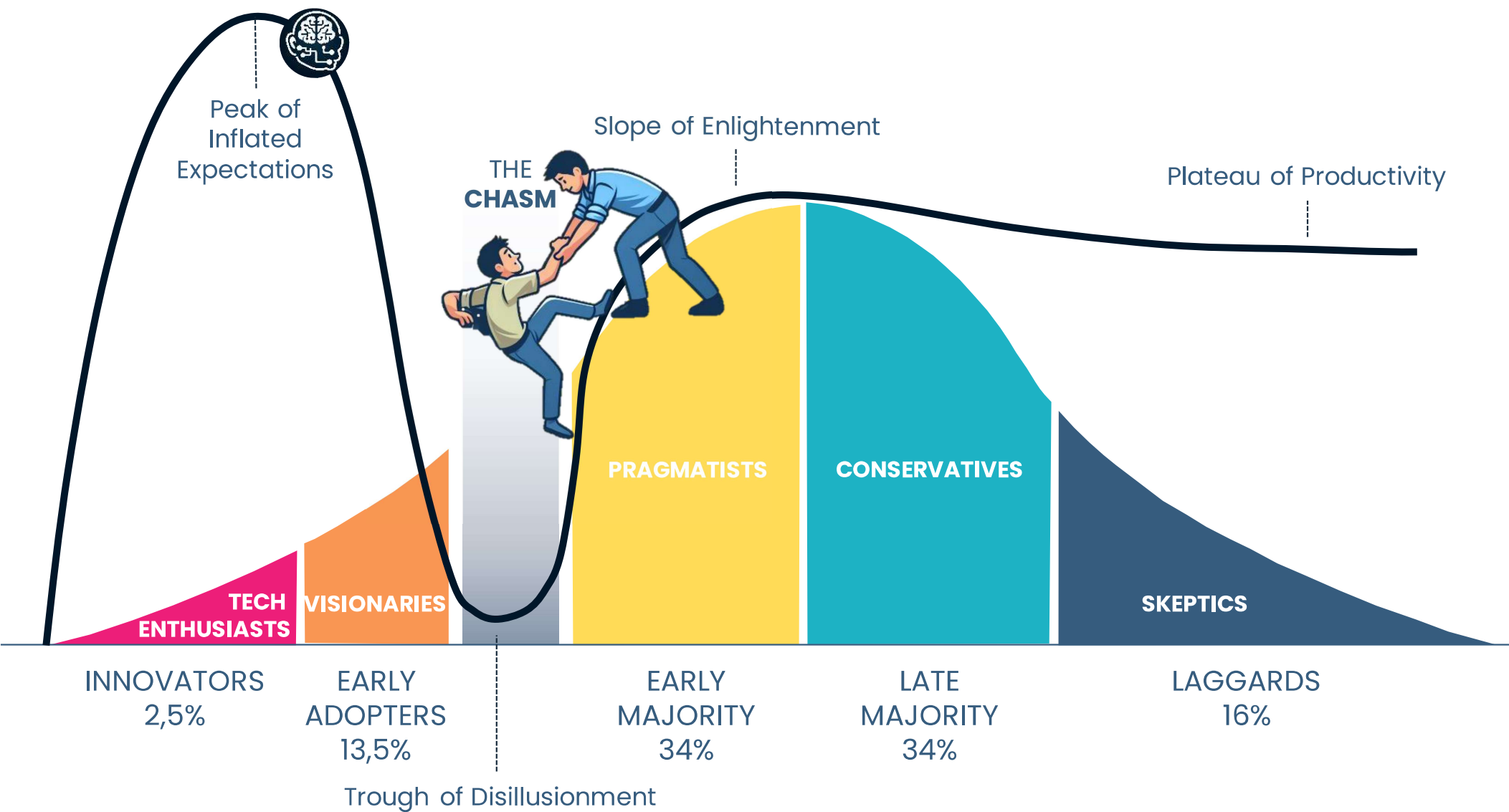
Copilot Connect

Partner 2 Partner
Copilot
program



The biggest challenge in rolling out AI & Copilot?

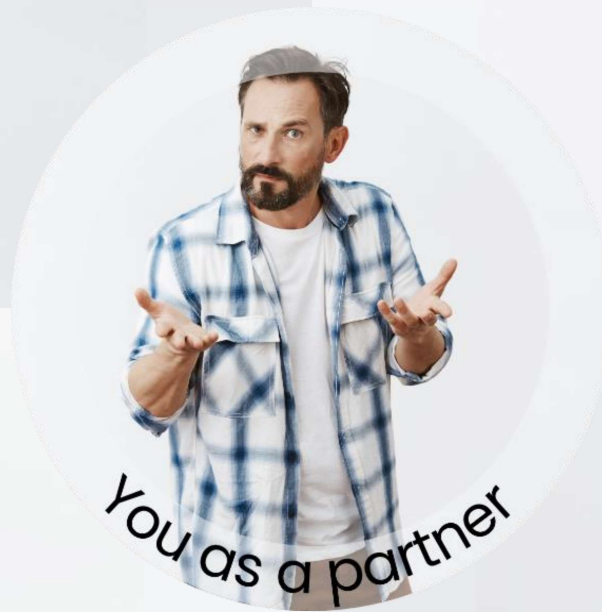






Implementation is covered

What about ROI?



You as a partner



Need for training

But not enough expertise on end user adoption

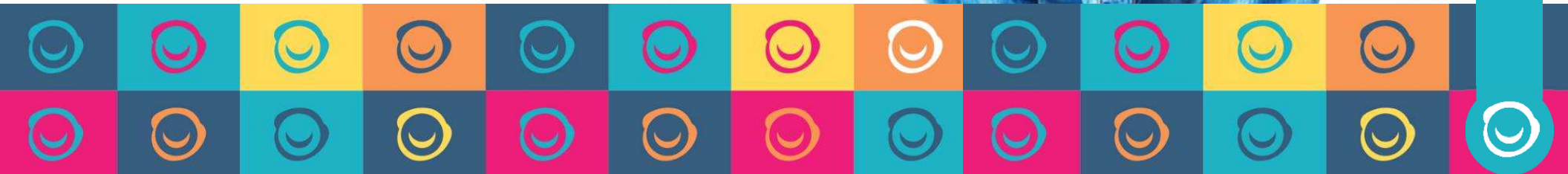


Introducing:



Copilot Connect

The P2P Copilot Program





Copilot Connect

We help your customers to be ready for Copilot

- For unmanaged SMB partners
- Audience:
 - HR/L&D managers
 - Business managers
 - Sales
 - C-suit
- And anyone else who will be working with Copilot



Copilot Connect

We help your customers to be ready for Copilot

- Partner invites customers
- OASE organizes Microsoft Copilot sessions
 - Duration: 1,5 day
 - 1 day hands-on training
 - 0,5 day follow-up session
 - Location: TBD by partner
 - Coach: TBD by OASE



Copilot Connect

We help your customers to be ready for Copilot

- What is covered?
 - What is Gen AI
 - Copilot vs competitors
 - An introduction to prompting
 - What are the possibilities of Microsoft Copilot
 - An exploration of the possibilities of Copilot in the different Microsoft applications
 - Audience targeted use cases
- Follow-up moment after 3 weeks
 - Lessons learned from previous sessions
 - What's new
 - Q&A



Copilot Connect

We help your customers to be ready for Copilot

- What's included in the price?
 - Training: practical 1-day training session
 - Aftercare:
 - ❑ 0,5 day follow-up session
 - ❑ OASE+ license for 8 weeks after training
 - Number of attendees: 15
- Price
 - € 3.950



Copilot Connect

The P2P Copilot Program