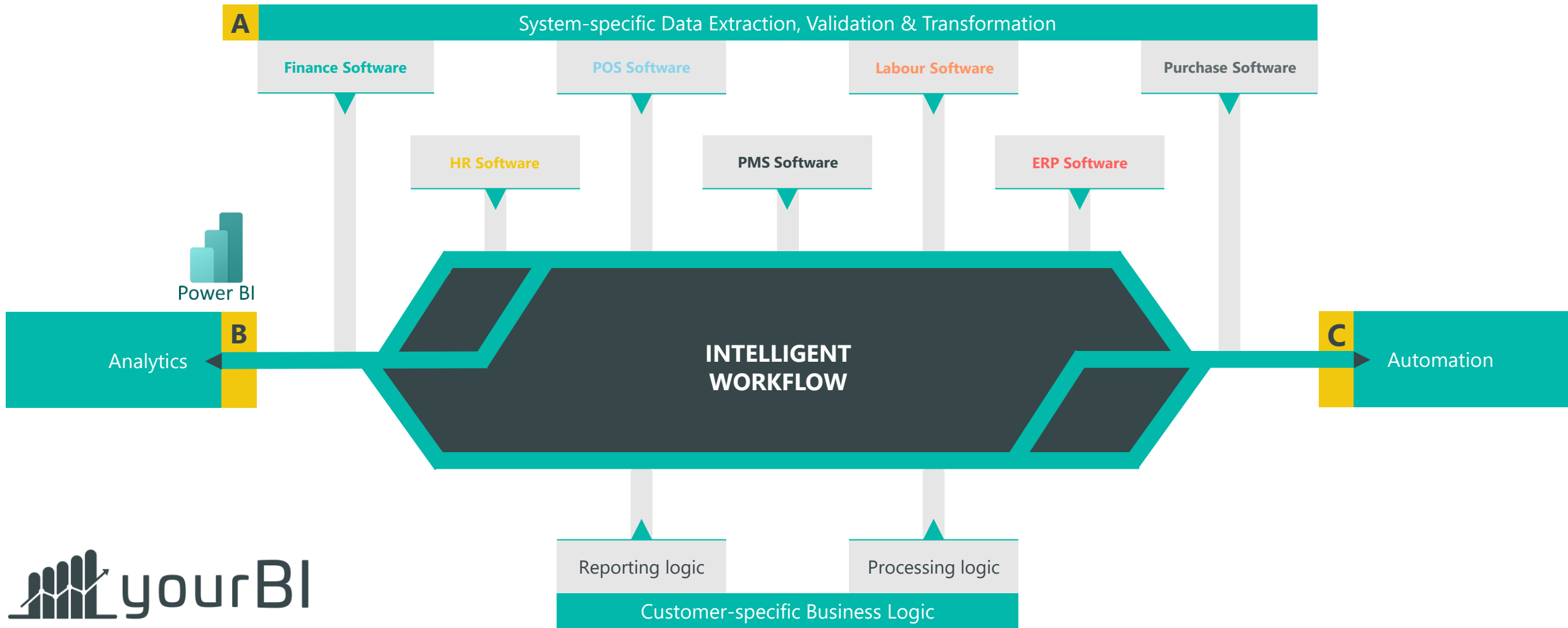
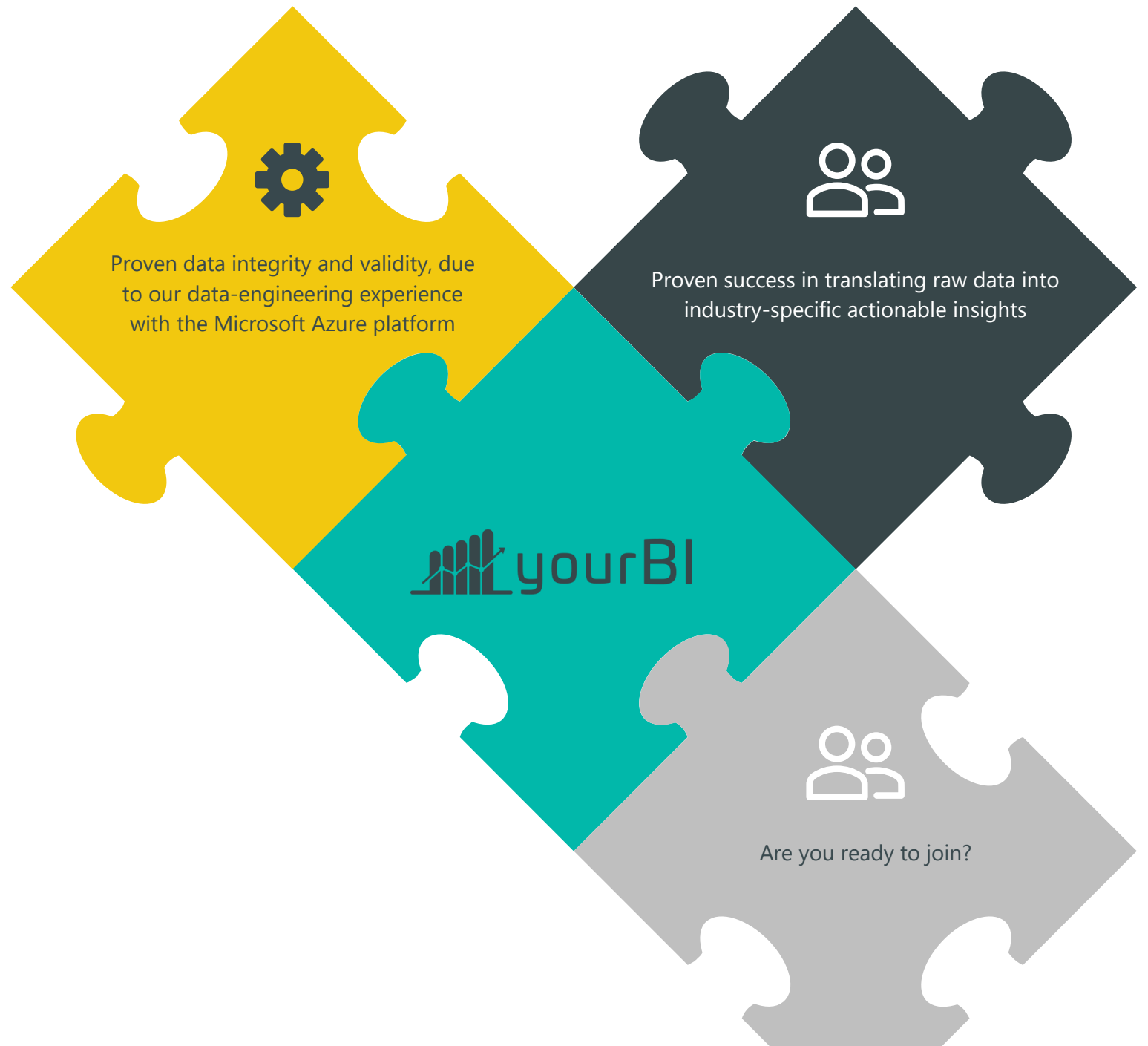


Intelligent Workflows | YourBI



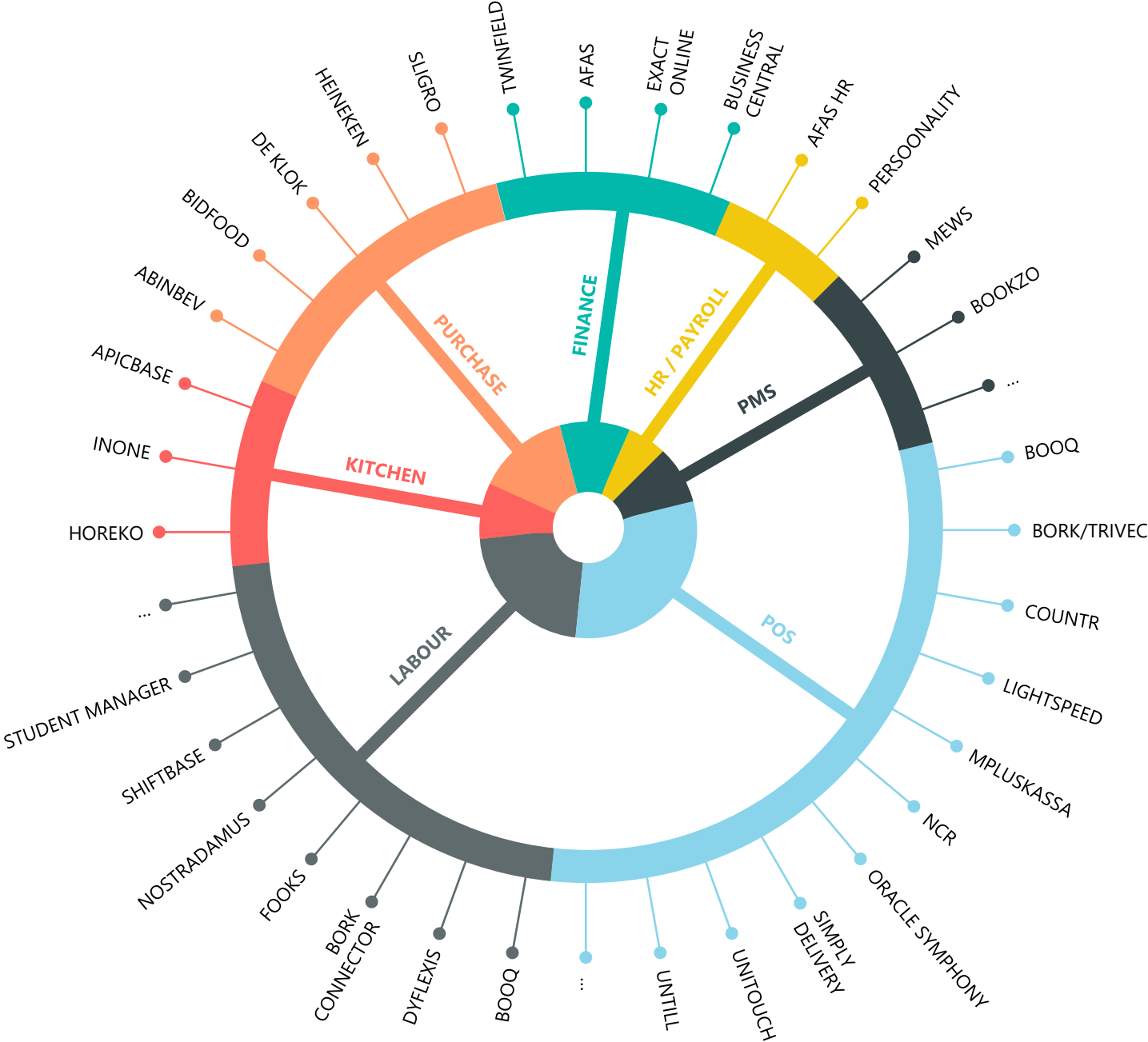
About us

We combine a state-of-the-art Azure-based architecture for data-analytics and automation with a participative, people-first approach to development and implementation. In doing so, we enable our customers to visibly increase profitability and embed data-driven decision-making in their organizations.



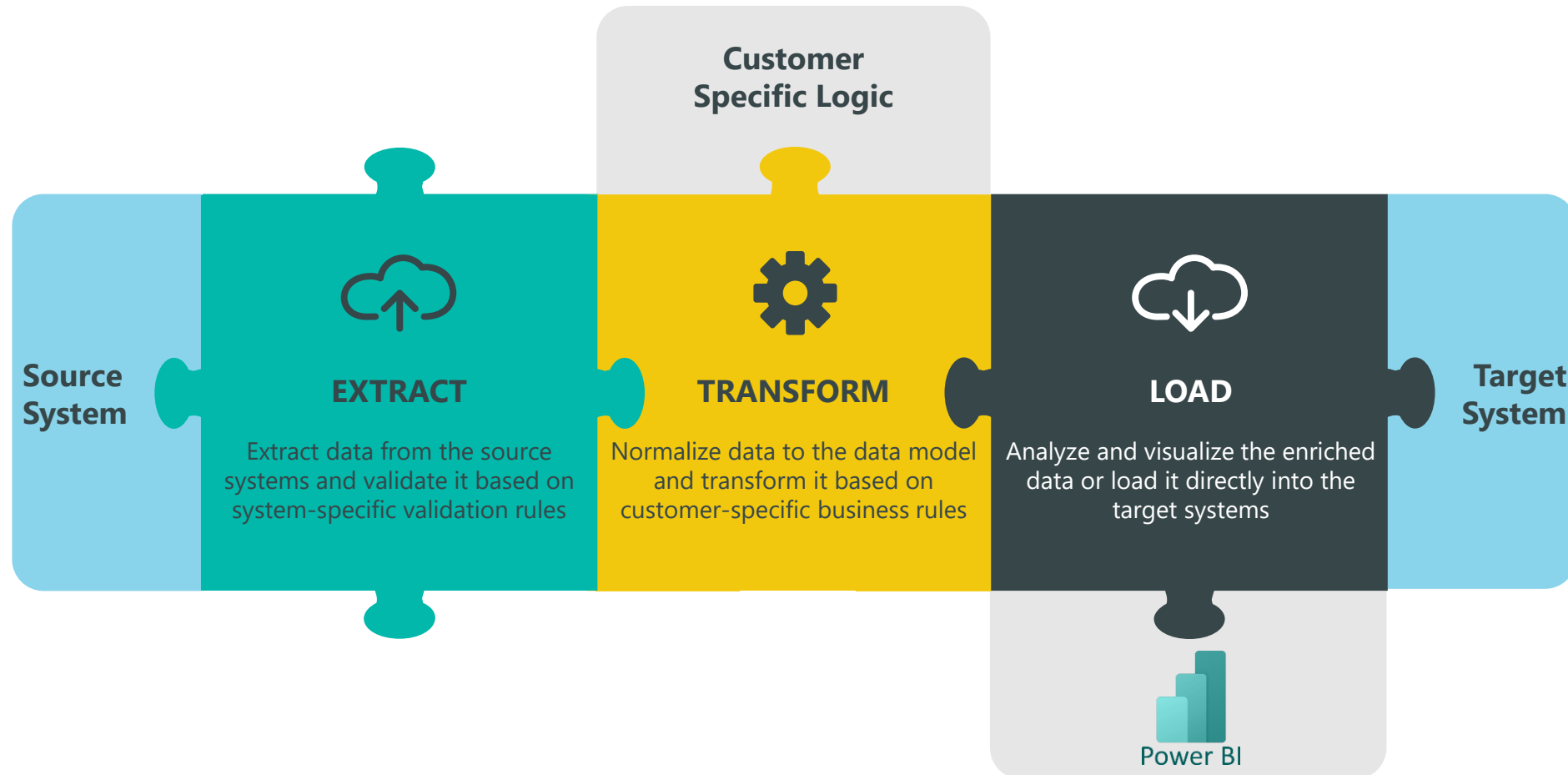
Product

Each day we process data from 50+ operational and financial software systems for over 3000 administrations. In doing so, we continuously improve data integrity and validity as well as the overall intelligence of our workflows.



A. Data Extraction, Validation & Transformation

A scalable architecture to extract data from all systems, transform and enrich it with customer specific logic and load it into target systems, while all steps of the process are being logged and validated



B. Improve your bottom line with yourBI

Customizable Finance dashboards with actionable insights


Business Intelligence

Gain real-time insight into your:

- Revenue and expenses with our **Profit & Loss dashboards**.
- Assets and liabilities with our **Balance Sheet dashboards**.
- Cash inflows and outflows with our **Cashflow dashboards**.
- The status of accounts receivable and accounts payable with our **Debtor Analysis** and **Creditor Analysis dashboards**.

Features

- Compare data period-over-period
- Compare data with the budget
- Zoom in on the underlying bookings
- Zoom in on the underlying invoices



Administratie ▼
Demo Administratie 1 ▼

Jaar ▼
2022 ▼

Periode ▼
10 ▼

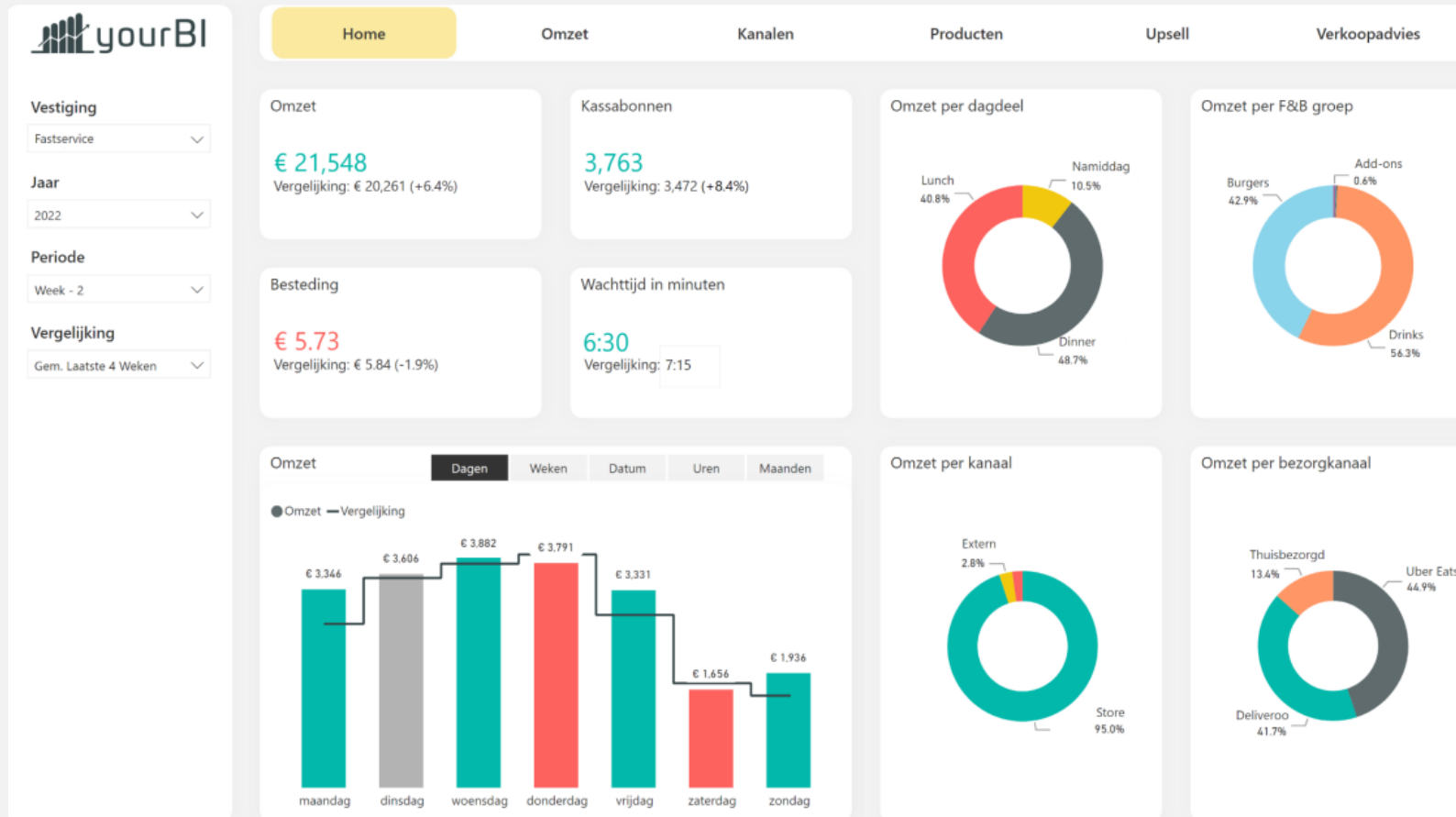
Naar boekingen →

Bank uitgelezen op: 13-12-2022 00:00
AFAS uitgelezen op: 20-12-2022 06:49

Home	Winst&Verlies	Exploitatie	Balans	Debiteuren	Debiteurenkaart	Crediteuren	Crediteurenkaart					
Winst & Verliesrekening												
Hoofdverdichting	Selectie	%	Vorig jaar	%	Begroting	%	Cumulatief selectie	%	Cumulatief vorig jaar	%	Cumulatief begroting	%
BRUTO BEDRIJFSRESULTAAT												
Netto omzet	€ 444,859	112.7%	€ 577,348	100.0%	€ 473,861	100.0%	€ 3,241,877	101.6%	€ 2,422,635	100.0%	€ 3,109,353	100.0%
Inkoopwaarde/kostprijs van de omzet	-€ 326,698	-82.7%	-€ 437,509	-75.8%	-€ 347,562	-73.3%	-€ 2,579,316	-80.8%	-€ 1,681,632	-69.4%	-€ 2,307,102	-74.2%
Totaal	€ 118,160	29.9%	€ 139,839	24.2%	€ 126,299	26.7%	€ 662,561	20.8%	€ 741,003	30.6%	€ 802,251	25.8%
BEDRIJFSLASTEN												
Lonen en salarissen	-€ 19,281	-4.9%	-€ 20,773	-3.6%	-€ 18,254	-3.9%	-€ 181,036	-5.7%	-€ 177,193	-7.3%	-€ 182,542	-5.9%
Sociale en pensioenlasten	-€ 2,196	-0.6%	-€ 2,249	-0.4%	-€ 1,958	-0.4%	-€ 21,010	-0.7%	-€ 20,214	-0.8%	-€ 19,583	-0.6%
Afschrijvingen	-€ 61	-0.0%	-€ 78	-0.0%	-€ 68	-0.0%	-€ 697	-0.0%	-€ 784	-0.0%	-€ 683	-0.0%
Andere personeelskosten	-€ 408	-0.1%	-€ 905	-0.2%	-€ 539	-0.1%	-€ 2,806	-0.1%	-€ 5,721	-0.2%	-€ 5,387	-0.2%
Huisvestingskosten	-€ 907	-0.2%	-€ 7,374	-1.3%	-€ 1,489	-0.3%	-€ 15,005	-0.5%	-€ 16,440	-0.7%	-€ 14,890	-0.5%
Kosten bedrijfsmiddelen					-€ 208	-0.0%	-€ 4,259	-0.1%	-€ 10,046	-0.4%	-€ 2,083	-0.1%
Kosten transportmiddelen	-€ 1,628	-0.4%	-€ 1,901	-0.3%	-€ 1,835	-0.4%	-€ 17,025	-0.5%	-€ 17,272	-0.7%	-€ 18,347	-0.6%
Administratie en beheerskosten	-€ 17,582	-4.5%	-€ 11,824	-2.0%	-€ 12,924	-2.7%	-€ 141,191	-4.4%	-€ 124,533	-5.1%	-€ 129,240	-4.2%
Verkoopkosten	-€ 14,716	-3.7%	-€ 14,795	-2.6%	-€ 17,396	-3.7%	-€ 176,207	-5.5%	-€ 141,340	-5.8%	-€ 173,958	-5.6%
Overige kosten	-€ 1,135	-0.3%	-€ 1,635	-0.3%	-€ 1,213	-0.3%	-€ 8,853	-0.3%	-€ 11,566	-0.5%	-€ 12,125	-0.4%
Totaal	€ 60,055	15.2%	€ 78,079	13.5%	€ 69,966	14.8%	€ 92,310	2.9%	€ 213,924	8.8%	€ 238,920	7.7%

B. Improve your bottom line with yourBI

Customizable Sales dashboards with actionable insights



Business Intelligence

- Look back at your sales, channels, products and average spend with our **Sales** and **Upsell dashboards**.
- Look forward to your staffing and stocking needs with our **Sales Forecasting dashboards**.

Features when looking back

- Compare data between outlets
- Compare data period-over-period
- Compare data like-for-like
- Generate a budget and compare data with the budget

Features when looking forward

- Forecast sales per hour
- Forecast sales per product

Overall

- Enrich data with our Enrichment App
- Switch between hours, days, weeks, months and years with our Dynamic Axis

B. Improve your bottom line with yourBI

Customizable Labour dashboards with actionable insights

Business Intelligence

- Look back at your labour costs and productivity with our **Labour Costs** and **Productivity dashboards**.
- Look forward to your staffing needs with our **Schedule Forecasting dashboards**.

Features when looking back

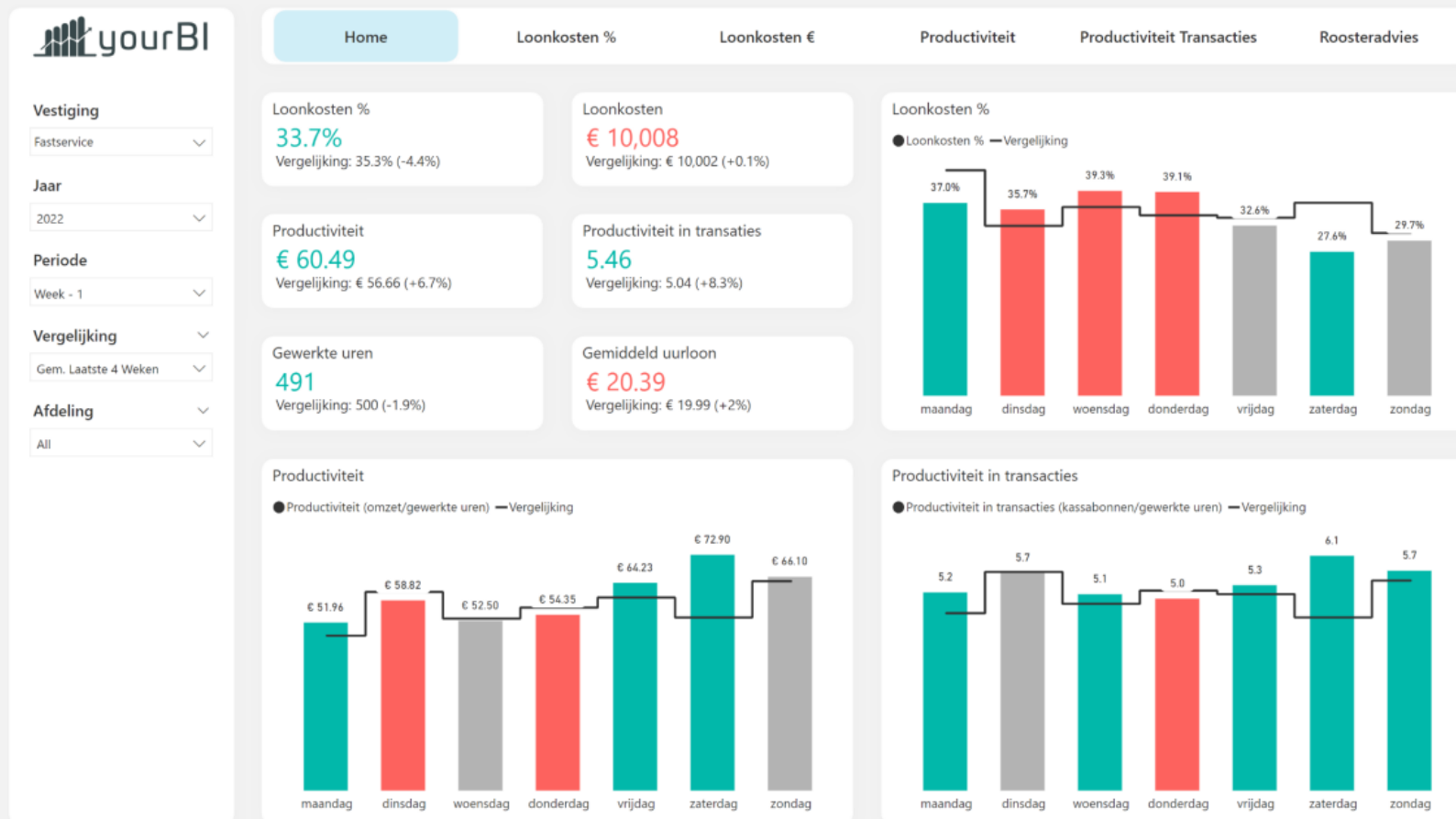
- Compare data between outlets
- Compare data period-over-period
- Compare data like-for-like
- Generate a budget and compare data with the budget

Features when looking forward

- Forecast staffing needs per hour
- Forecast staffing needs per department

Overall

- Enrich data with our Enrichment App
- Switch between hours, days, weeks, months and years with our Dynamic Axis



B. Improve your bottom line with yourBI

Customizable Purchase dashboards with actionable insights



Business Intelligence

- Optimize your assortment with our **Assortment Engineering** and **Assortment Pricing** dashboards.
- Look back at your waste and the difference between the theoretical and actual usage with our **Purchase Costs** and **Stock** dashboards.
- Look forward to your purchase needs with our **Purchase Forecasting** dashboards.

Features when looking back

- Compare data between outlets
- Compare data period-over-period
- Compare data like-for-like
- Generate a budget and compare data with the budget

Features when looking forward

- Forecast purchasing needs per scheduled delivery
- Forecast purchasing needs per purchased item

C. Automated Accounting

Example: how to process point of sale and purchase data

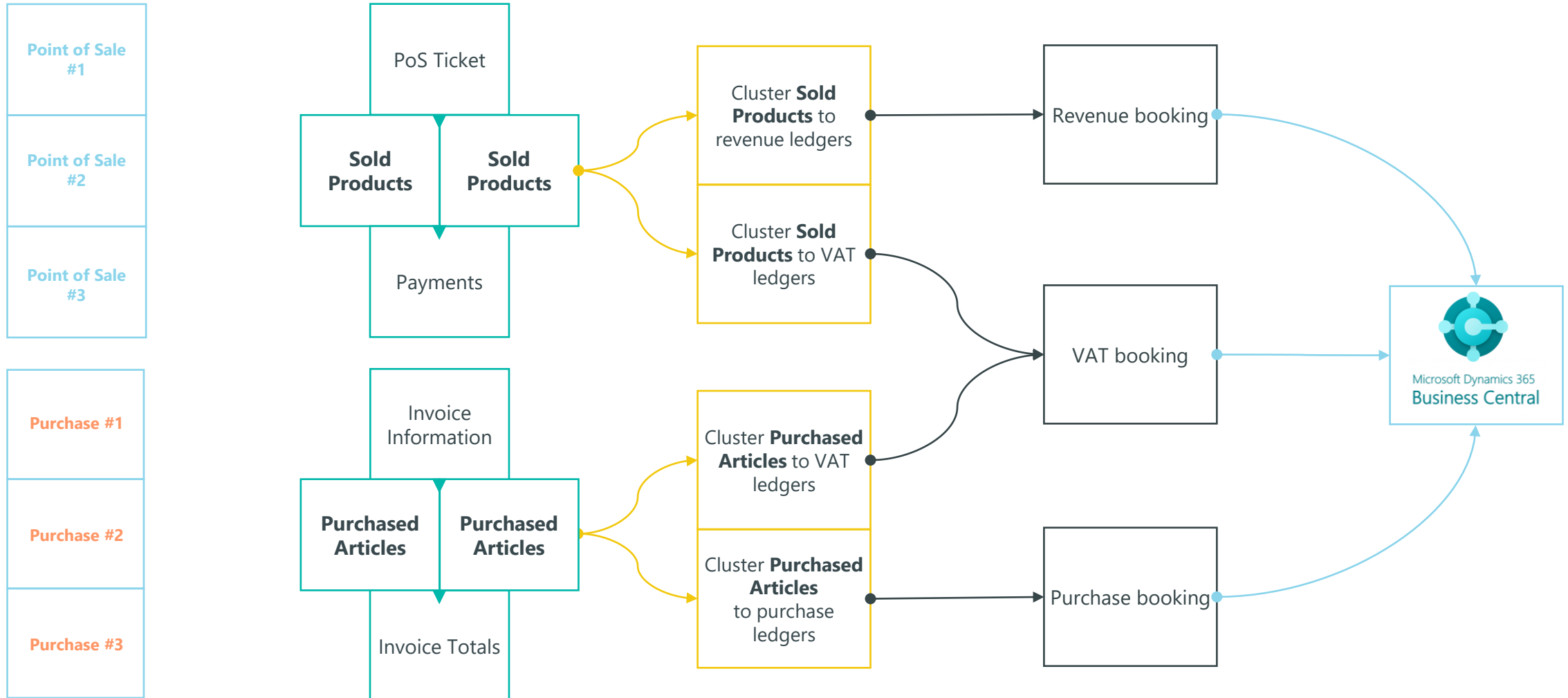
SOURCE SYSTEMS

EXTRACT

TRANSFORM

LOAD

TARGET SYSTEMS



C. Automated Accounting

Example: how to process point of sale and purchase data

We extract data from source systems at regular intervals (*hour / every 4 hours / day / etc.*)

We validate new data both technically and functionally and add the new data to the existing data

We cluster sold products to revenue ledgers and generate bookings

We first translate the bookings into the format required by the financial system and then load the bookings into the system

We extract data from the target system and compare it to the validated data from source systems for triangulation purposes

SOURCE SYSTEMS

EXTRACT

TRANSFORM

LOAD

TARGET SYSTEMS

