

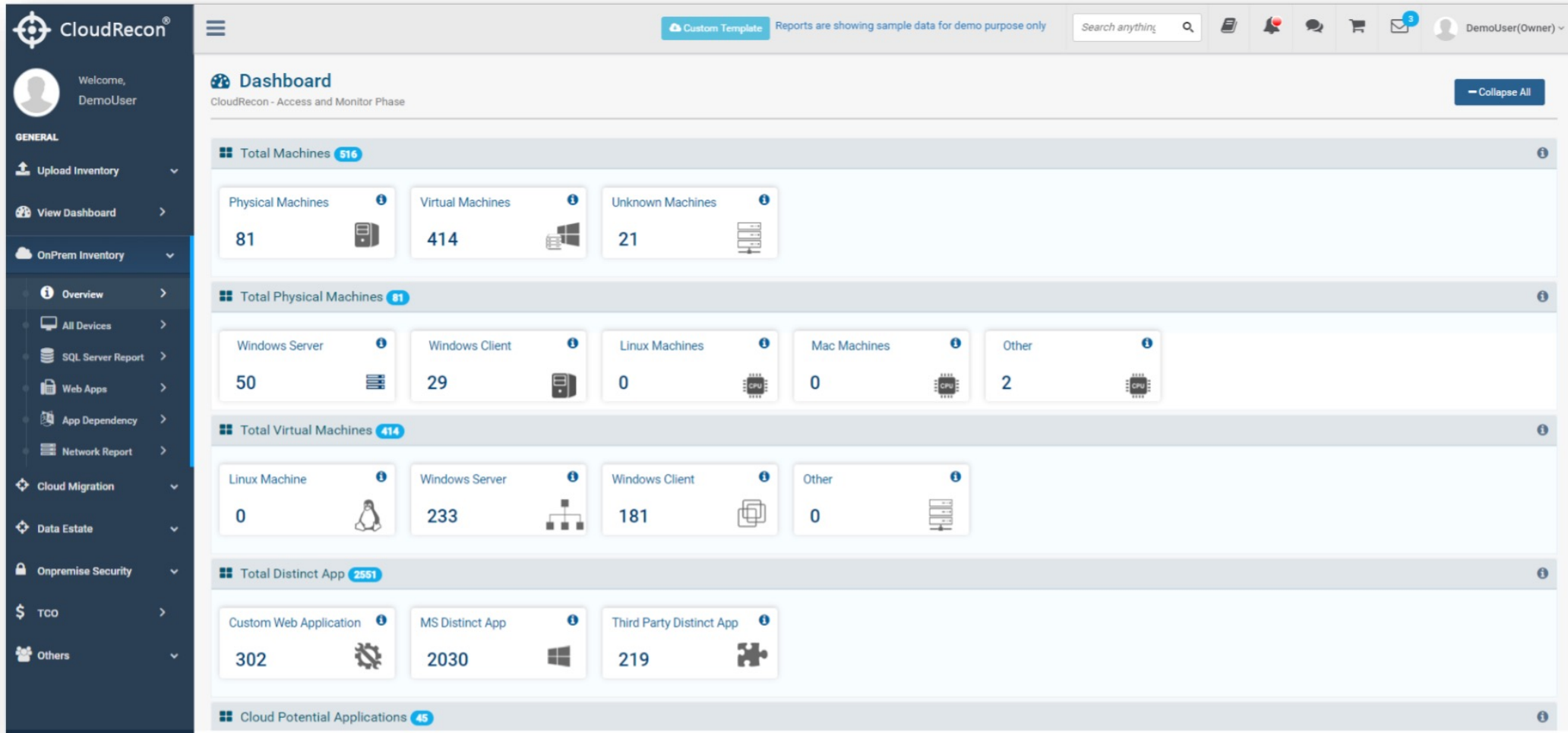
Options under Assessment Operation Center

UnifyCloud Tools

CloudRecon

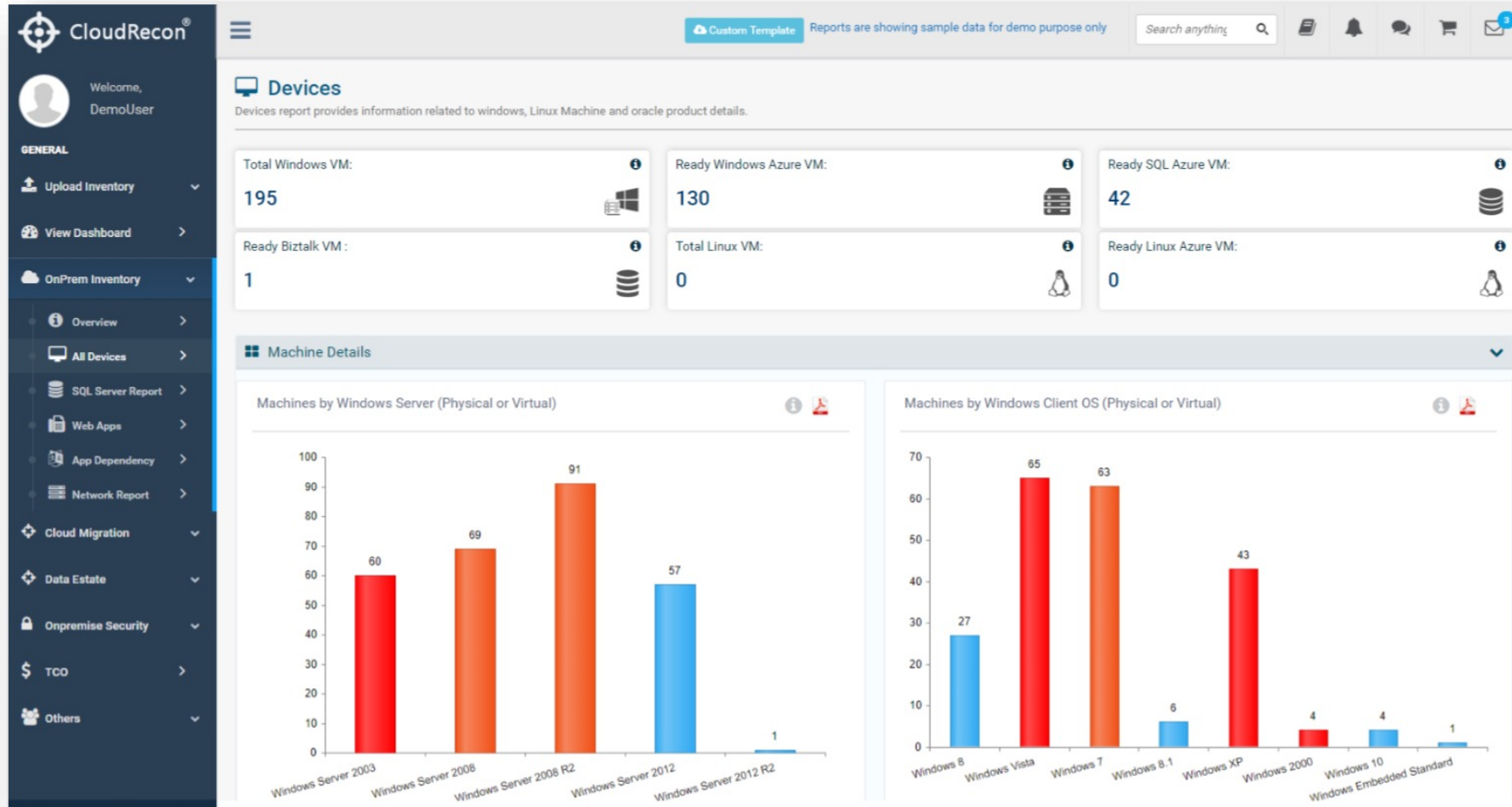
Microsoft Introduction Session

CloudRecon . Dashboard



Microsoft Introduction Session

CloudRecon . All Devices



Microsoft Introduction Session

CloudRecon . Lift & Shift Reports

CloudRecon®

Custom Template
Reports are showing sample data for demo purpose only

Search anything

DemoUser(Owner)

Lift & Shift Report

Lift & Shift report provides as it is infrastructure migration to azure.

\$ Summary
Virtual Machine
Other Services
Assumptions
Backup and DR
All Machine Details

Production + Dev/Test
Production

Lift and Shift Azure Cost & Device Summary

SLA 99.9 (Replication)
SLA 99.99 (Backup + Replication)
Include Backup Cost?
Include Disaster Recovery Cost?

Category	Production + Dev/Test Pay as you go (Monthly Price)	Production + Dev/Test 1 Year reserved (Monthly Price)	Production + Dev/Test 3 Year reserved (Monthly Price)																																				
Windows VM Machines	<table border="1" style="width: 100%; border-collapse: collapse;"> <tr><td>Compute Cost (Prod)</td><td>\$ 11159.51</td></tr> <tr><td>Compute Cost (Dev/Test)</td><td>\$ 0.00</td></tr> <tr><td>Storage Cost</td><td>\$ 422.40</td></tr> </table>	Compute Cost (Prod)	\$ 11159.51	Compute Cost (Dev/Test)	\$ 0.00	Storage Cost	\$ 422.40	<table border="1" style="width: 100%; border-collapse: collapse;"> <tr><td>Compute Cost (Prod)</td><td>\$ 7960.16</td></tr> <tr><td>Compute Cost (Dev/Test)</td><td>\$ 0.00</td></tr> <tr><td>Storage Cost</td><td>\$ 422.40</td></tr> </table>	Compute Cost (Prod)	\$ 7960.16	Compute Cost (Dev/Test)	\$ 0.00	Storage Cost	\$ 422.40	<table border="1" style="width: 100%; border-collapse: collapse;"> <tr><td>Compute Cost (Prod)</td><td>\$ 6741.49</td></tr> <tr><td>Compute Cost (Dev/Test)</td><td>\$ 0.00</td></tr> <tr><td>Storage Cost</td><td>\$ 422.40</td></tr> </table>	Compute Cost (Prod)	\$ 6741.49	Compute Cost (Dev/Test)	\$ 0.00	Storage Cost	\$ 422.40																		
Compute Cost (Prod)	\$ 11159.51																																						
Compute Cost (Dev/Test)	\$ 0.00																																						
Storage Cost	\$ 422.40																																						
Compute Cost (Prod)	\$ 7960.16																																						
Compute Cost (Dev/Test)	\$ 0.00																																						
Storage Cost	\$ 422.40																																						
Compute Cost (Prod)	\$ 6741.49																																						
Compute Cost (Dev/Test)	\$ 0.00																																						
Storage Cost	\$ 422.40																																						
Biztalk Machines	<table border="1" style="width: 100%; border-collapse: collapse;"> <tr><td>Compute Cost (Prod)</td><td>\$ 1622.84</td></tr> <tr><td>Compute Cost (Dev/Test)</td><td>\$ 0.00</td></tr> <tr><td>Storage Cost</td><td>\$ 2.40</td></tr> </table>	Compute Cost (Prod)	\$ 1622.84	Compute Cost (Dev/Test)	\$ 0.00	Storage Cost	\$ 2.40	<table border="1" style="width: 100%; border-collapse: collapse;"> <tr><td>Compute Cost (Prod)</td><td>\$ 1593.58</td></tr> <tr><td>Compute Cost (Dev/Test)</td><td>\$ 0.00</td></tr> <tr><td>Storage Cost</td><td>\$ 2.40</td></tr> </table>	Compute Cost (Prod)	\$ 1593.58	Compute Cost (Dev/Test)	\$ 0.00	Storage Cost	\$ 2.40	<table border="1" style="width: 100%; border-collapse: collapse;"> <tr><td>Compute Cost (Prod)</td><td>\$ 1584.28</td></tr> <tr><td>Compute Cost (Dev/Test)</td><td>\$ 0.00</td></tr> <tr><td>Storage Cost</td><td>\$ 2.40</td></tr> </table>	Compute Cost (Prod)	\$ 1584.28	Compute Cost (Dev/Test)	\$ 0.00	Storage Cost	\$ 2.40																		
Compute Cost (Prod)	\$ 1622.84																																						
Compute Cost (Dev/Test)	\$ 0.00																																						
Storage Cost	\$ 2.40																																						
Compute Cost (Prod)	\$ 1593.58																																						
Compute Cost (Dev/Test)	\$ 0.00																																						
Storage Cost	\$ 2.40																																						
Compute Cost (Prod)	\$ 1584.28																																						
Compute Cost (Dev/Test)	\$ 0.00																																						
Storage Cost	\$ 2.40																																						
SQL VM Machines	<table border="1" style="width: 100%; border-collapse: collapse;"> <tr><td>Compute Cost (Prod)</td><td>\$ 45891.45</td></tr> <tr><td>Compute Cost (Dev/Test)</td><td>\$ 0.00</td></tr> <tr><td>Storage Cost</td><td>\$ 521.92</td></tr> </table>	Compute Cost (Prod)	\$ 45891.45	Compute Cost (Dev/Test)	\$ 0.00	Storage Cost	\$ 521.92	<table border="1" style="width: 100%; border-collapse: collapse;"> <tr><td>Compute Cost (Prod)</td><td>\$ 44693.52</td></tr> <tr><td>Compute Cost (Dev/Test)</td><td>\$ 0.00</td></tr> <tr><td>Storage Cost</td><td>\$ 521.92</td></tr> </table>	Compute Cost (Prod)	\$ 44693.52	Compute Cost (Dev/Test)	\$ 0.00	Storage Cost	\$ 521.92	<table border="1" style="width: 100%; border-collapse: collapse;"> <tr><td>Compute Cost (Prod)</td><td>\$ 44060.07</td></tr> <tr><td>Compute Cost (Dev/Test)</td><td>\$ 0.00</td></tr> <tr><td>Storage Cost</td><td>\$ 521.92</td></tr> </table>	Compute Cost (Prod)	\$ 44060.07	Compute Cost (Dev/Test)	\$ 0.00	Storage Cost	\$ 521.92																		
Compute Cost (Prod)	\$ 45891.45																																						
Compute Cost (Dev/Test)	\$ 0.00																																						
Storage Cost	\$ 521.92																																						
Compute Cost (Prod)	\$ 44693.52																																						
Compute Cost (Dev/Test)	\$ 0.00																																						
Storage Cost	\$ 521.92																																						
Compute Cost (Prod)	\$ 44060.07																																						
Compute Cost (Dev/Test)	\$ 0.00																																						
Storage Cost	\$ 521.92																																						
Azure Services Costing Pay as you go (Monthly Price)	<table border="1" style="width: 100%; border-collapse: collapse;"> <tr><td>Total Compute</td><td>\$ 58673.80</td></tr> <tr><td>Total Storage</td><td>\$ 946.72</td></tr> <tr><td>Network/Other</td><td>\$ 3808.82</td></tr> <tr><td>Total Backup Cost</td><td>\$ 1289.60</td></tr> <tr><td>Total DR Cost</td><td>\$ 4513.53</td></tr> <tr><td>Total Cost</td><td>\$ 69232.47</td></tr> </table>	Total Compute	\$ 58673.80	Total Storage	\$ 946.72	Network/Other	\$ 3808.82	Total Backup Cost	\$ 1289.60	Total DR Cost	\$ 4513.53	Total Cost	\$ 69232.47	<table border="1" style="width: 100%; border-collapse: collapse;"> <tr><td>Total Compute</td><td>\$ 54247.26</td></tr> <tr><td>Total Storage</td><td>\$ 946.72</td></tr> <tr><td>Network/Other</td><td>\$ 3808.82</td></tr> <tr><td>Total Backup Cost</td><td>\$ 1289.60</td></tr> <tr><td>Total DR Cost</td><td>\$ 4513.53</td></tr> <tr><td>Total Cost</td><td>\$ 64805.93</td></tr> </table>	Total Compute	\$ 54247.26	Total Storage	\$ 946.72	Network/Other	\$ 3808.82	Total Backup Cost	\$ 1289.60	Total DR Cost	\$ 4513.53	Total Cost	\$ 64805.93	<table border="1" style="width: 100%; border-collapse: collapse;"> <tr><td>Total Compute</td><td>\$ 52385.84</td></tr> <tr><td>Total Storage</td><td>\$ 946.72</td></tr> <tr><td>Network/Other</td><td>\$ 3808.82</td></tr> <tr><td>Total Backup Cost</td><td>\$ 1289.60</td></tr> <tr><td>Total DR Cost</td><td>\$ 4513.53</td></tr> <tr><td>Total Cost</td><td>\$ 62944.51</td></tr> </table>	Total Compute	\$ 52385.84	Total Storage	\$ 946.72	Network/Other	\$ 3808.82	Total Backup Cost	\$ 1289.60	Total DR Cost	\$ 4513.53	Total Cost	\$ 62944.51
Total Compute	\$ 58673.80																																						
Total Storage	\$ 946.72																																						
Network/Other	\$ 3808.82																																						
Total Backup Cost	\$ 1289.60																																						
Total DR Cost	\$ 4513.53																																						
Total Cost	\$ 69232.47																																						
Total Compute	\$ 54247.26																																						
Total Storage	\$ 946.72																																						
Network/Other	\$ 3808.82																																						
Total Backup Cost	\$ 1289.60																																						
Total DR Cost	\$ 4513.53																																						
Total Cost	\$ 64805.93																																						
Total Compute	\$ 52385.84																																						
Total Storage	\$ 946.72																																						
Network/Other	\$ 3808.82																																						
Total Backup Cost	\$ 1289.60																																						
Total DR Cost	\$ 4513.53																																						
Total Cost	\$ 62944.51																																						

Total Machines Summary

MachineType	Sized	Not Sized	Total
Windows Server	128	67	195
Biztalk Server	1	1	2
SQL Server	42	15	57
Linux Server	0	0	0
Total Machines	171	83	254

Machine(Sized) Summary(Based on Platform)

MachineType	Physical	Virtual	Unknown	Total
Windows Server	9	119	0	128
Biztalk Server	0	1	0	1
SQL Server	6	36	0	42
Linux Server	0	0	0	0
Total Machines	15	156	0	171

Machine(Sized) Summary(Based on Environment)

MachineType	Prod	Dev/Test	Total
Windows Server	128	0	128
Biztalk Server	1	0	1
SQL Server	42	0	42
Linux Server	0	0	0
Total Machines	171	0	171

Cost Summary Description

- All pricing done for monthly basis.
- Cost Summary for Virtual Machines for Lift & Shift Showing -
 - Pay AS YOU GO
 - 1 Year Reserved Instance
 - 3 Year Reserved Instance
- Azure Service Cost breakdown for Compute,Storage, Network. Number of VMs Considered for Lift & Shift.
- Total Compute cost in Azure Services Costing is sum of all compute cost for VMs (Windows, Biztalk, SQL or Linux).
- Total Storage cost in Azure Services Costing is sum of all storage cost for VMs (Windows, Biztalk, SQL or Linux).
- Network/Other cost in Azure Services Costing taken from other services tab.
- All Virtual Machines are categorized based on (if found)-
 - Windows Server
 - Biztalk Server
 - SQL Server
 - Linux Server

Microsoft Introduction Session

CloudRecon . Lift & Shift Reports . SQL PaaS

CloudRecon®

☰
Custom Template
Reports are showing sample data for demo purpose only

Search anything

DemoUser(Owner)

Lift & Shift Report-SQLPaaS
Lift & Shift report in SQL PaaS environment on Azure.

Export to Excel

\$ Summary
Virtual Machine
Other Services
Assumptions

SLA 99.9 (Replication)
SLA 99.99 (Backup + Replication)

Lift and Shift Azure Cost & Device Summary

Pay as you go
(Monthly Price)

Windows VM Machines	
Compute Cost	\$11159.51
Storage Cost	\$422.40
Biztalk Machines	
Compute Cost	\$1622.84
Storage Cost	\$2.40
SQL Managed Instance	
Compute Cost	\$14,727.52
Storage Cost	\$ 29.44

1 year reserved
(Monthly Price)

Windows VM Machines	
Compute Cost	\$7960.16
Storage Cost	\$422.40
Biztalk Machines	
Compute Cost	\$1593.58
Storage Cost	\$2.40
SQL Managed Instance	
Compute Cost	\$11,617.88
Storage Cost	\$ 29.44

3 year reserved
(Monthly Price)

Windows VM Machines	
Compute Cost	\$6741.49
Storage Cost	\$422.40
Biztalk Machines	
Compute Cost	\$1584.28
Storage Cost	\$2.40
SQL Managed Instance	
Compute Cost	\$9,837.82
Storage Cost	\$ 29.44

Azure Services Costing
Pay as you go (Monthly Price)

Total Compute	\$27509.87
Total Storage	\$454.24
Network/Other	\$3808.82
Backup Cost	\$ 1289.60
DR Cost	\$ 4513.53
Total Cost	\$37576.06

Azure Services Costing
1 year reserved (Monthly Price)

Total Compute	\$21171.62
Total Storage	\$454.24
Network/Other	\$3808.82
Backup Cost	\$ 1289.60
DR Cost	\$ 4513.53
Total Cost	\$31237.81

Azure Services Costing
3 year reserved (Monthly Price)

Total Compute	\$18163.59
Total Storage	\$454.24
Network/Other	\$3808.82
Backup Cost	\$ 1289.60
DR Cost	\$ 4513.53
Total Cost	\$28229.78

Virtual machine Count (Azure Ready)

MachineType	Physical	Virtual	Total
Windows Server	9	119	128
Biztalk Server	0	1	1
SQL Server	6	36	42
Linux Server	0	0	0
Total Machines	15	156	171

Virtual machine Count (Azure Ready)

MachineType	Prod	Dev/Test	Total
Windows Server	128	0	128
Biztalk Server	1	0	1
SQL Server	42	0	42
Linux Server	0	0	0
Total Machines	171	0	171

Cost Summary Description

- All pricing done for monthly basis.
- Cost Summary for Virtual Machines for Lift & Shift Showing -
 - Pay AS You GO
 - 1 Year Reserved Instance
 - 3 Year Reserved Instance
- Azure Service Cost breakdown for Compute,Storage, Network. Number of VMs Considered for Lift & Shift.
- Total Compute cost in Azure Services Costing is sum of all compute cost for VMs (Windows, Biztalk, SQL or Linux).
- Total Storage cost in Azure Services Costing is sum of all storage cost for VMs (Windows, Biztalk, SQL or Linux).
- Network/Other cost in Azure Services Costing taken from other services tab.
- All Virtual Machines are categorized based on (if found)-
 - Windows Server
 - Biztalk Server
 - SQL Server
 - Linux Server

- GENERAL
- Upload Inventory
- View Dashboard
- OnPrem Inventory
- Cloud Migration
 - Lift & Shift Report
 - LiftShift-SQL-PaaS
 - Lift & Shift with MLS
 - Lift & Shift with RI
 - Lift & Shift Grouping
 - App Sizing
- Data Estate
- Onpremise Security
- TCO
- Others

Microsoft Introduction Session

CloudRecon . Lift & Shift Reports with MLS

CloudRecon®

Custom Template
Reports are showing sample data for demo purpose only

Search anything

Lift & Shift Report - Microsoft License Entitlement
Lift & Shift report provides as it is infrastructure migration to azure including MLS implementation.

\$ Summary
Virtual Machine
\$ License Distribution
MLS Summary


Hybrid Benefit Already Applied.
Try with new MLS File

Lift and Shift Azure Cost & Device Summary using Microsoft License Entitlement


Without SA Benefit	With SA Benefit	With SA Benefit	With SA Benefit	Virtual Machines Summary / License Count																																																																																																																		
Production + Dev/Test Payasyougo <small>(Monthly Price)</small> <table border="1" style="width: 100%; border-collapse: collapse;"> <thead> <tr><th colspan="2">Windows Machines</th></tr> </thead> <tbody> <tr><td>Compute Cost(Prod)</td><td>\$ 11159.51</td></tr> <tr><td>Storage Cost</td><td>\$ 422.40</td></tr> <tr><th colspan="2">SQLServer Machines</th></tr> <tr><td>Compute Cost(Prod)</td><td>\$ 45891.45</td></tr> <tr><td>Storage Cost</td><td>\$ 521.92</td></tr> <tr><th colspan="2">Biztalk Machines</th></tr> <tr><td>Compute Cost(Prod)</td><td>\$ 1622.84</td></tr> <tr><td>Storage Cost</td><td>\$ 2.40</td></tr> </tbody> </table>	Windows Machines		Compute Cost(Prod)	\$ 11159.51	Storage Cost	\$ 422.40	SQLServer Machines		Compute Cost(Prod)	\$ 45891.45	Storage Cost	\$ 521.92	Biztalk Machines		Compute Cost(Prod)	\$ 1622.84	Storage Cost	\$ 2.40	Production + Dev/Test Payasyougo + AHUB <small>(Monthly Price)</small> <table border="1" style="width: 100%; border-collapse: collapse;"> <thead> <tr><th colspan="2">Windows Machines</th></tr> </thead> <tbody> <tr><td>Compute Cost (Prod) (With SA)</td><td>58 VM \$ 2470.32</td></tr> <tr><td>Compute Cost (Prod) (Without SA)</td><td>70 VM \$ 6102.07</td></tr> <tr><td>Storage Cost</td><td>\$ 422.40</td></tr> <tr><th colspan="2">SQLServer Machines</th></tr> <tr><td>Compute Cost (Prod) (Without SA)</td><td>1 VM \$ 160.60</td></tr> <tr><td>Compute Cost (Prod) (BYOL)</td><td>14 VM \$ 1287.72</td></tr> <tr><td>Compute Cost (Prod) (BYOL + SA)</td><td>27 VM \$ 1544.68</td></tr> <tr><td>Storage Cost</td><td>\$ 521.92</td></tr> <tr><th colspan="2">Biztalk Machines</th></tr> <tr><td>Compute Cost (Prod) (Without SA)</td><td>1 VM \$ 1622.84</td></tr> <tr><td>Storage Cost</td><td>\$ 2.40</td></tr> </tbody> </table>	Windows Machines		Compute Cost (Prod) (With SA)	58 VM \$ 2470.32	Compute Cost (Prod) (Without SA)	70 VM \$ 6102.07	Storage Cost	\$ 422.40	SQLServer Machines		Compute Cost (Prod) (Without SA)	1 VM \$ 160.60	Compute Cost (Prod) (BYOL)	14 VM \$ 1287.72	Compute Cost (Prod) (BYOL + SA)	27 VM \$ 1544.68	Storage Cost	\$ 521.92	Biztalk Machines		Compute Cost (Prod) (Without SA)	1 VM \$ 1622.84	Storage Cost	\$ 2.40	Production + Dev/Test 1 Year RI + AHUB <small>(Monthly Price)</small> <table border="1" style="width: 100%; border-collapse: collapse;"> <thead> <tr><th colspan="2">Windows Machines</th></tr> </thead> <tbody> <tr><td>Compute Cost (Prod) (With SA)</td><td>58 VM \$ 1595.68</td></tr> <tr><td>Compute Cost (Prod) (Without SA)</td><td>70 VM \$ 4349.68</td></tr> <tr><td>Storage Cost</td><td>\$ 422.40</td></tr> <tr><th colspan="2">SQLServer Machines</th></tr> <tr><td>Compute Cost (Prod) (Without SA)</td><td>1 VM \$ 132.27</td></tr> <tr><td>Compute Cost (Prod) (BYOL)</td><td>14 VM \$ 785.12</td></tr> <tr><td>Compute Cost (Prod) (BYOL + SA)</td><td>27 VM \$ 719.09</td></tr> <tr><td>Storage Cost</td><td>\$ 521.92</td></tr> <tr><th colspan="2">Biztalk Machines</th></tr> <tr><td>Compute Cost (Prod) (Without SA)</td><td>1 VM \$ 1593.58</td></tr> <tr><td>Storage Cost</td><td>\$ 2.40</td></tr> </tbody> </table>	Windows Machines		Compute Cost (Prod) (With SA)	58 VM \$ 1595.68	Compute Cost (Prod) (Without SA)	70 VM \$ 4349.68	Storage Cost	\$ 422.40	SQLServer Machines		Compute Cost (Prod) (Without SA)	1 VM \$ 132.27	Compute Cost (Prod) (BYOL)	14 VM \$ 785.12	Compute Cost (Prod) (BYOL + SA)	27 VM \$ 719.09	Storage Cost	\$ 521.92	Biztalk Machines		Compute Cost (Prod) (Without SA)	1 VM \$ 1593.58	Storage Cost	\$ 2.40	Production + Dev/Test 3 Year RI + AHUB <small>(Monthly Price)</small> <table border="1" style="width: 100%; border-collapse: collapse;"> <thead> <tr><th colspan="2">Windows Machines</th></tr> </thead> <tbody> <tr><td>Compute Cost (Prod) (With SA)</td><td>58 VM \$ 1044.98</td></tr> <tr><td>Compute Cost (Prod) (Without SA)</td><td>70 VM \$ 3681.71</td></tr> <tr><td>Storage Cost</td><td>\$ 422.40</td></tr> <tr><th colspan="2">SQLServer Machines</th></tr> <tr><td>Compute Cost (Prod) (Without SA)</td><td>1 VM \$ 117.41</td></tr> <tr><td>Compute Cost (Prod) (BYOL)</td><td>14 VM \$ 676.62</td></tr> <tr><td>Compute Cost (Prod) (BYOL + SA)</td><td>27 VM \$ 466.56</td></tr> <tr><td>Storage Cost</td><td>\$ 521.92</td></tr> <tr><th colspan="2">Biztalk Machines</th></tr> <tr><td>Compute Cost (Prod) (Without SA)</td><td>1 VM \$ 1584.28</td></tr> <tr><td>Storage Cost</td><td>\$ 2.40</td></tr> </tbody> </table>	Windows Machines		Compute Cost (Prod) (With SA)	58 VM \$ 1044.98	Compute Cost (Prod) (Without SA)	70 VM \$ 3681.71	Storage Cost	\$ 422.40	SQLServer Machines		Compute Cost (Prod) (Without SA)	1 VM \$ 117.41	Compute Cost (Prod) (BYOL)	14 VM \$ 676.62	Compute Cost (Prod) (BYOL + SA)	27 VM \$ 466.56	Storage Cost	\$ 521.92	Biztalk Machines		Compute Cost (Prod) (Without SA)	1 VM \$ 1584.28	Storage Cost	\$ 2.40	<table border="1" style="width: 100%; border-collapse: collapse;"> <thead> <tr><th colspan="3">Machines License Consumed Summary</th></tr> <tr><th>LicenseType</th><th>MachineType</th><th>License Applied</th></tr> </thead> <tbody> <tr><td>Windows DataCenter</td><td>Windows VMs</td><td>32</td></tr> <tr><td>Windows Standard</td><td>Windows VMs</td><td>26</td></tr> <tr><td>Windows DataCenter</td><td>SQL VMs</td><td>15</td></tr> <tr><td>Windows Standard</td><td>SQL VMs</td><td>11</td></tr> <tr><td>SQL Enterprise</td><td>SQL VMs</td><td>41</td></tr> <tr><td>SQL Standard</td><td>SQL VMs</td><td>0</td></tr> </tbody> </table>	Machines License Consumed Summary			LicenseType	MachineType	License Applied	Windows DataCenter	Windows VMs	32	Windows Standard	Windows VMs	26	Windows DataCenter	SQL VMs	15	Windows Standard	SQL VMs	11	SQL Enterprise	SQL VMs	41	SQL Standard	SQL VMs	0
Windows Machines																																																																																																																						
Compute Cost(Prod)	\$ 11159.51																																																																																																																					
Storage Cost	\$ 422.40																																																																																																																					
SQLServer Machines																																																																																																																						
Compute Cost(Prod)	\$ 45891.45																																																																																																																					
Storage Cost	\$ 521.92																																																																																																																					
Biztalk Machines																																																																																																																						
Compute Cost(Prod)	\$ 1622.84																																																																																																																					
Storage Cost	\$ 2.40																																																																																																																					
Windows Machines																																																																																																																						
Compute Cost (Prod) (With SA)	58 VM \$ 2470.32																																																																																																																					
Compute Cost (Prod) (Without SA)	70 VM \$ 6102.07																																																																																																																					
Storage Cost	\$ 422.40																																																																																																																					
SQLServer Machines																																																																																																																						
Compute Cost (Prod) (Without SA)	1 VM \$ 160.60																																																																																																																					
Compute Cost (Prod) (BYOL)	14 VM \$ 1287.72																																																																																																																					
Compute Cost (Prod) (BYOL + SA)	27 VM \$ 1544.68																																																																																																																					
Storage Cost	\$ 521.92																																																																																																																					
Biztalk Machines																																																																																																																						
Compute Cost (Prod) (Without SA)	1 VM \$ 1622.84																																																																																																																					
Storage Cost	\$ 2.40																																																																																																																					
Windows Machines																																																																																																																						
Compute Cost (Prod) (With SA)	58 VM \$ 1595.68																																																																																																																					
Compute Cost (Prod) (Without SA)	70 VM \$ 4349.68																																																																																																																					
Storage Cost	\$ 422.40																																																																																																																					
SQLServer Machines																																																																																																																						
Compute Cost (Prod) (Without SA)	1 VM \$ 132.27																																																																																																																					
Compute Cost (Prod) (BYOL)	14 VM \$ 785.12																																																																																																																					
Compute Cost (Prod) (BYOL + SA)	27 VM \$ 719.09																																																																																																																					
Storage Cost	\$ 521.92																																																																																																																					
Biztalk Machines																																																																																																																						
Compute Cost (Prod) (Without SA)	1 VM \$ 1593.58																																																																																																																					
Storage Cost	\$ 2.40																																																																																																																					
Windows Machines																																																																																																																						
Compute Cost (Prod) (With SA)	58 VM \$ 1044.98																																																																																																																					
Compute Cost (Prod) (Without SA)	70 VM \$ 3681.71																																																																																																																					
Storage Cost	\$ 422.40																																																																																																																					
SQLServer Machines																																																																																																																						
Compute Cost (Prod) (Without SA)	1 VM \$ 117.41																																																																																																																					
Compute Cost (Prod) (BYOL)	14 VM \$ 676.62																																																																																																																					
Compute Cost (Prod) (BYOL + SA)	27 VM \$ 466.56																																																																																																																					
Storage Cost	\$ 521.92																																																																																																																					
Biztalk Machines																																																																																																																						
Compute Cost (Prod) (Without SA)	1 VM \$ 1584.28																																																																																																																					
Storage Cost	\$ 2.40																																																																																																																					
Machines License Consumed Summary																																																																																																																						
LicenseType	MachineType	License Applied																																																																																																																				
Windows DataCenter	Windows VMs	32																																																																																																																				
Windows Standard	Windows VMs	26																																																																																																																				
Windows DataCenter	SQL VMs	15																																																																																																																				
Windows Standard	SQL VMs	11																																																																																																																				
SQL Enterprise	SQL VMs	41																																																																																																																				
SQL Standard	SQL VMs	0																																																																																																																				
Azure Services Costing Payasyougo <small>(Monthly Price)</small> <table border="1" style="width: 100%; border-collapse: collapse;"> <tbody> <tr><td>Total Compute Cost</td><td>\$ 58673.80</td></tr> <tr><td>Total Storage Cost</td><td>\$ 946.72</td></tr> <tr><td>Network/Other</td><td>\$ 3808.82</td></tr> <tr><td>Total Backup Cost</td><td>\$ 1289.60</td></tr> <tr><td>Total DR Cost</td><td>\$ 4513.53</td></tr> <tr><td>Total Cost</td><td>\$ 69232.47</td></tr> </tbody> </table>	Total Compute Cost	\$ 58673.80	Total Storage Cost	\$ 946.72	Network/Other	\$ 3808.82	Total Backup Cost	\$ 1289.60	Total DR Cost	\$ 4513.53	Total Cost	\$ 69232.47	Azure Services Costing Payasyougo + AHUB <small>(Monthly Price)</small> <table border="1" style="width: 100%; border-collapse: collapse;"> <tbody> <tr><td>Total Compute Cost</td><td>\$ 13188.23</td></tr> <tr><td>Total Storage Cost</td><td>\$ 946.72</td></tr> <tr><td>Network/Other</td><td>\$ 3808.82</td></tr> <tr><td>Total Backup Cost</td><td>\$ 1289.60</td></tr> <tr><td>Total DR Cost</td><td>\$ 4513.53</td></tr> <tr><td>Total Cost</td><td>\$ 23746.90</td></tr> </tbody> </table>	Total Compute Cost	\$ 13188.23	Total Storage Cost	\$ 946.72	Network/Other	\$ 3808.82	Total Backup Cost	\$ 1289.60	Total DR Cost	\$ 4513.53	Total Cost	\$ 23746.90	Azure Services Costing 1 Year RI + AHUB <small>(Monthly Price)</small> <table border="1" style="width: 100%; border-collapse: collapse;"> <tbody> <tr><td>Total Compute Cost</td><td>\$ 9175.42</td></tr> <tr><td>Total Storage Cost</td><td>\$ 946.72</td></tr> <tr><td>Network/Other</td><td>\$ 3808.82</td></tr> <tr><td>Total Backup Cost</td><td>\$ 1289.60</td></tr> <tr><td>Total DR Cost</td><td>\$ 4513.53</td></tr> <tr><td>Total Cost</td><td>\$ 19734.09</td></tr> </tbody> </table>	Total Compute Cost	\$ 9175.42	Total Storage Cost	\$ 946.72	Network/Other	\$ 3808.82	Total Backup Cost	\$ 1289.60	Total DR Cost	\$ 4513.53	Total Cost	\$ 19734.09	Azure Services Costing 3 Year RI + AHUB <small>(Monthly Price)</small> <table border="1" style="width: 100%; border-collapse: collapse;"> <tbody> <tr><td>Total Compute Cost</td><td>\$ 7573.56</td></tr> <tr><td>Total Storage Cost</td><td>\$ 946.72</td></tr> <tr><td>Network/Other</td><td>\$ 3808.82</td></tr> <tr><td>Total Backup Cost</td><td>\$ 1289.60</td></tr> <tr><td>Total DR Cost</td><td>\$ 4513.53</td></tr> <tr><td>Total Cost</td><td>\$ 18132.23</td></tr> </tbody> </table>	Total Compute Cost	\$ 7573.56	Total Storage Cost	\$ 946.72	Network/Other	\$ 3808.82	Total Backup Cost	\$ 1289.60	Total DR Cost	\$ 4513.53	Total Cost	\$ 18132.23	<table border="1" style="width: 100%; border-collapse: collapse;"> <thead> <tr><th colspan="4">Machine type summary</th></tr> <tr><th>MachineType</th><th>Physical</th><th>Virtual</th><th>Total</th></tr> </thead> <tbody> <tr><td>Windows Server</td><td>9</td><td>119</td><td>128</td></tr> <tr><td>Biztalk Server</td><td>0</td><td>1</td><td>1</td></tr> <tr><td>SQL Server</td><td>6</td><td>36</td><td>42</td></tr> <tr><td>Linux Server</td><td>0</td><td>0</td><td>0</td></tr> <tr><td>Total Machines</td><td>15</td><td>156</td><td>171</td></tr> </tbody> </table>	Machine type summary				MachineType	Physical	Virtual	Total	Windows Server	9	119	128	Biztalk Server	0	1	1	SQL Server	6	36	42	Linux Server	0	0	0	Total Machines	15	156	171																																						
Total Compute Cost	\$ 58673.80																																																																																																																					
Total Storage Cost	\$ 946.72																																																																																																																					
Network/Other	\$ 3808.82																																																																																																																					
Total Backup Cost	\$ 1289.60																																																																																																																					
Total DR Cost	\$ 4513.53																																																																																																																					
Total Cost	\$ 69232.47																																																																																																																					
Total Compute Cost	\$ 13188.23																																																																																																																					
Total Storage Cost	\$ 946.72																																																																																																																					
Network/Other	\$ 3808.82																																																																																																																					
Total Backup Cost	\$ 1289.60																																																																																																																					
Total DR Cost	\$ 4513.53																																																																																																																					
Total Cost	\$ 23746.90																																																																																																																					
Total Compute Cost	\$ 9175.42																																																																																																																					
Total Storage Cost	\$ 946.72																																																																																																																					
Network/Other	\$ 3808.82																																																																																																																					
Total Backup Cost	\$ 1289.60																																																																																																																					
Total DR Cost	\$ 4513.53																																																																																																																					
Total Cost	\$ 19734.09																																																																																																																					
Total Compute Cost	\$ 7573.56																																																																																																																					
Total Storage Cost	\$ 946.72																																																																																																																					
Network/Other	\$ 3808.82																																																																																																																					
Total Backup Cost	\$ 1289.60																																																																																																																					
Total DR Cost	\$ 4513.53																																																																																																																					
Total Cost	\$ 18132.23																																																																																																																					
Machine type summary																																																																																																																						
MachineType	Physical	Virtual	Total																																																																																																																			
Windows Server	9	119	128																																																																																																																			
Biztalk Server	0	1	1																																																																																																																			
SQL Server	6	36	42																																																																																																																			
Linux Server	0	0	0																																																																																																																			
Total Machines	15	156	171																																																																																																																			
				<table border="1" style="width: 100%; border-collapse: collapse;"> <thead> <tr><th colspan="4">Machine Environment summary</th></tr> <tr><th>MachineType</th><th>Prod</th><th>Dev/Test</th><th>Total</th></tr> </thead> <tbody> <tr><td>Windows Server</td><td>128</td><td>0</td><td>128</td></tr> <tr><td>Biztalk Server</td><td>1</td><td>0</td><td>1</td></tr> <tr><td>SQL Server</td><td>42</td><td>0</td><td>42</td></tr> <tr><td>Linux Server</td><td>0</td><td>0</td><td>0</td></tr> <tr><td>Total Machines</td><td>171</td><td>0</td><td>171</td></tr> </tbody> </table>	Machine Environment summary				MachineType	Prod	Dev/Test	Total	Windows Server	128	0	128	Biztalk Server	1	0	1	SQL Server	42	0	42	Linux Server	0	0	0	Total Machines	171	0	171																																																																																						
Machine Environment summary																																																																																																																						
MachineType	Prod	Dev/Test	Total																																																																																																																			
Windows Server	128	0	128																																																																																																																			
Biztalk Server	1	0	1																																																																																																																			
SQL Server	42	0	42																																																																																																																			
Linux Server	0	0	0																																																																																																																			
Total Machines	171	0	171																																																																																																																			

Microsoft Introduction Session

CloudRecon . Data Estate . SQL DTU



Welcome, DemoUser

Custom Template
Reports are showing sample data for demo purpose only


DemoUser(Owner)

SQL Sizing Summary Report

This report provides all the relevant information about SQL Azure DB and SQL Azure VM Cost.

US East


US\$ Cost Summary
DB Sizing
Default DB
Component Services
Assumptions

On-premises

SQL Server Databases

Total SQL Server Databases : **1310**

✓
 Sized Databases
515

✗
 Default Databases
795

SQL Azure DB(PAAS) Sizing Based on DTU

Service Name	Instance Size	Tier	Instance Count	Monthly Price
SQL Azure DB	S3	Standard	119	US\$ 17,514.42
SQL Azure DB	S2	Standard	282	US\$ 20,758.02
SQL Azure DB	S0	Standard	62	US\$ 912.64
				US\$ 40,715.44

Total Price
US\$ 40,715.44

On-premises

SQL Component Services

✓
 SQL Analysis Services
67

✓
 SQL Reporting Services
84


✓
 SQL Integration Services
60

SQL Component Services On Azure

Instance Size	Tier	Instance Count	Monthly Price
Windows VM:Reporting Services	Standard	7	US\$ 3,679.20
Azure Data Factory	Standard	7	US\$ 3,151.95
Azure Analysis Services	Standard	7	US\$ 4,139.10


Total Price
US\$ 10,970.25

Copyright © UnifyCloud LLC (2019). All Rights Reserved.



Microsoft Introduction Session

CloudRecon . Data Estate . VCore



Custom Template

Reports are showing sample data for demo purpose only

Search anything..

US East

Without SA B

Pay as you go
 1 year reserved
 3 year reserved

SQL Sizing vCore

SQL Sizing vCore

US\$ Cost Summary

DB Sizing

Default DB

Component Services

Assumptions

On-premises

SQL Server Databases

Total SQL Server Databases : **1310**

✓ Sized Databases

515

✗ Default Databases

795

SQL Azure DB(PaaS) Sizing Based on vCore

Instance Size	Tier/Environment	Instance Count	Monthly Price
1 vCore	General/Production	427	US\$ 78,606.43
2 vCore	General/Production	23	US\$ 8,468.37
			Total Price US\$ 87,074.80

On-premises

SQL Component Services

✓ SQL Analysis Services

67

✓ SQL Reporting Services

84

✓ SQL Integration Services

60

SQL Component Services On Azure

Instance Size	Tier	Instance Count	Monthly Price
Windows VM:Reporting Services	Standard	7	US\$ 3,679.20
Azure Data Factory	Standard	7	US\$ 3,151.95
Azure Analysis Services	Standard	7	US\$ 4,139.10
			Total Price US\$ 10,970.25

Microsoft Introduction Session

CloudRecon . Data Estate . SQL MI

The screenshot displays the CloudRecon interface for SQL Managed Instances. The top navigation bar includes a search bar, user profile (DemoUser), and various notification icons. The main content area is titled "SQL Managed Instance" and provides a summary of the report's purpose. Below this, there are several tabs for navigation: Cost Summary, Total Considered Instances, MI Before Consolidation, After Consolidation, Ignored Instances, DB Details, Component Services, and Assumptions. The "After Consolidation" tab is active, showing a comparison between current and consolidated states.

SQL Server Instances Summary:

- Total SQL Server Instances: 230
- Sized Instances: 115
- Ignored Instances: 115

SQL Azure Managed Instances Table:

Instance Size	Count	Monthly Price	Storage Price (* Free till 32 GB)	After Consolidation	Before Consolidation
Gen 4,(8 Cores)	5	\$ 7,363.75	\$ 14.72/for 2 Instances	7 Instances \$ 14,756.96	115 Instances \$ 147,282.36
Gen 4,(24 Cores)	1	\$ 4,418.26	\$ 14.72/for 1 Instances		
Gen 4,(16 Cores)	1	\$ 2,945.51	\$ 0.00/for 0 Instances		
		\$ 14,727.52	\$ 29.44		

SQL Component Services On Azure Table:

Instance Size	Tier	Instance Count	Monthly Price	Total Price
Windows VM:Reporting Services	Standard	7	\$ 3,679.20	\$ 10,970.25
Azure Data Factory	Standard	7	\$ 3,151.95	
Azure Analysis Services	Standard	7	\$ 4,139.10	

SQL Component Services Summary:

- SQL Analysis Services: 67
- SQL Reporting Services: 84
- SQL Integration Services: 60

Microsoft Introduction Session

CloudRecon . TCO Report

