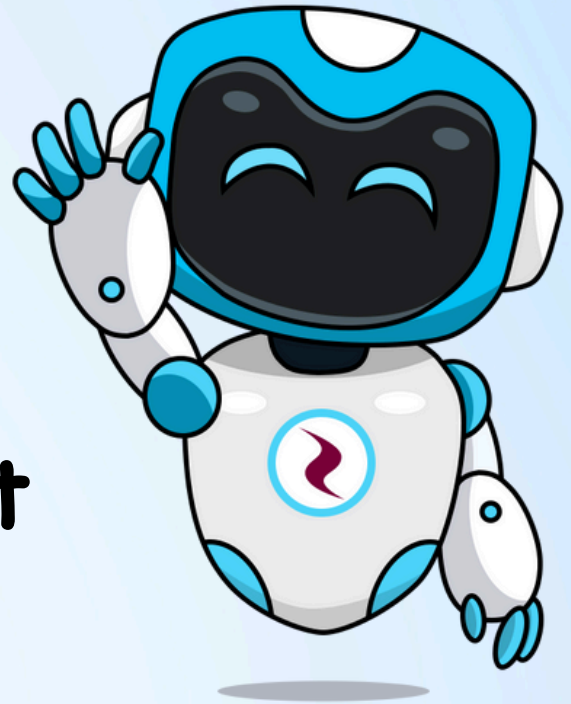


INTRODUCING

your very own personal
Document Intelligent Assistant

The Insight Agent

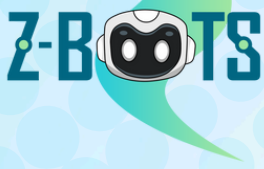


The Insight Agent, powered by Azure AI Foundry (formerly AI Studio), uses Large Language Models (LLM) to deliver precise, natural-language answers from your documents. It is ideal for businesses needing quick insights from reports, contracts, and more. This enhances decision-making with fast, accurate responses.

The Insight Agent analyzes your document repository to provide actionable business insights in seconds which can help organizations make informed decisions and gain a competitive edge.

It only responds based on the data from your documents, ensuring full security. The Insight Agent is fully customizable where you can have your own company logo for a professional experience.





KEY FEATURES

Document Processing & Answering:

- The agent reads and processes documents to provide contextual answers based on user queries.
- It understands and answers questions using advanced LLM technology.

Compare the revenue growth for the last four years in a table, including the total revenue for each year and the growth percentage compared to the previous consecutive year.

Sure! Here's a comparison of Starbucks' revenue growth over the last four years in a table format:

Fiscal Year	Revenue (in billions)	Revenue Growth Compared to Previous Year
2022	\$32.3	11% increase ¹
2021	\$29.1	24% increase
2020	\$23.5	11% decrease ²
2019	\$26.5	7% increase

I hope this helps! If you have any more questions, feel free to ask.

2 references ▾

- (1) 2014 - Annual Report.pdf - Part 1
- (2) 2014 - Annual Report.pdf - Part 2

AI-generated content may be incorrect

Type a new question...

Customizable User Interface:

- The interface is fully customizable to match your company's branding, including the option to upload your company logo and adjust color schemes.
- This feature ensures that the agent aligns with your corporate identity for a cohesive user experience.

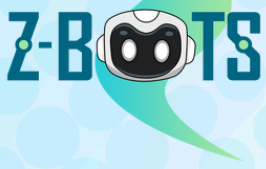
ZILLIONe Insight Bot

Hi, I'm the Insight Agent!

I can offer insights and detailed analysis on the annual reports of Starbucks from 2010 to 2023.

What is the margin profit?

Type a new question...



KEY FEATURES



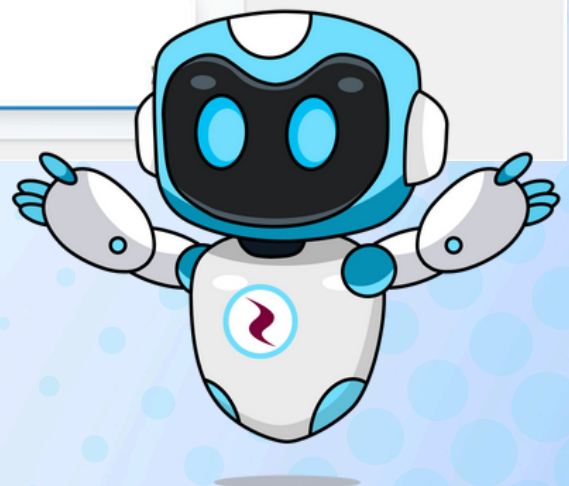
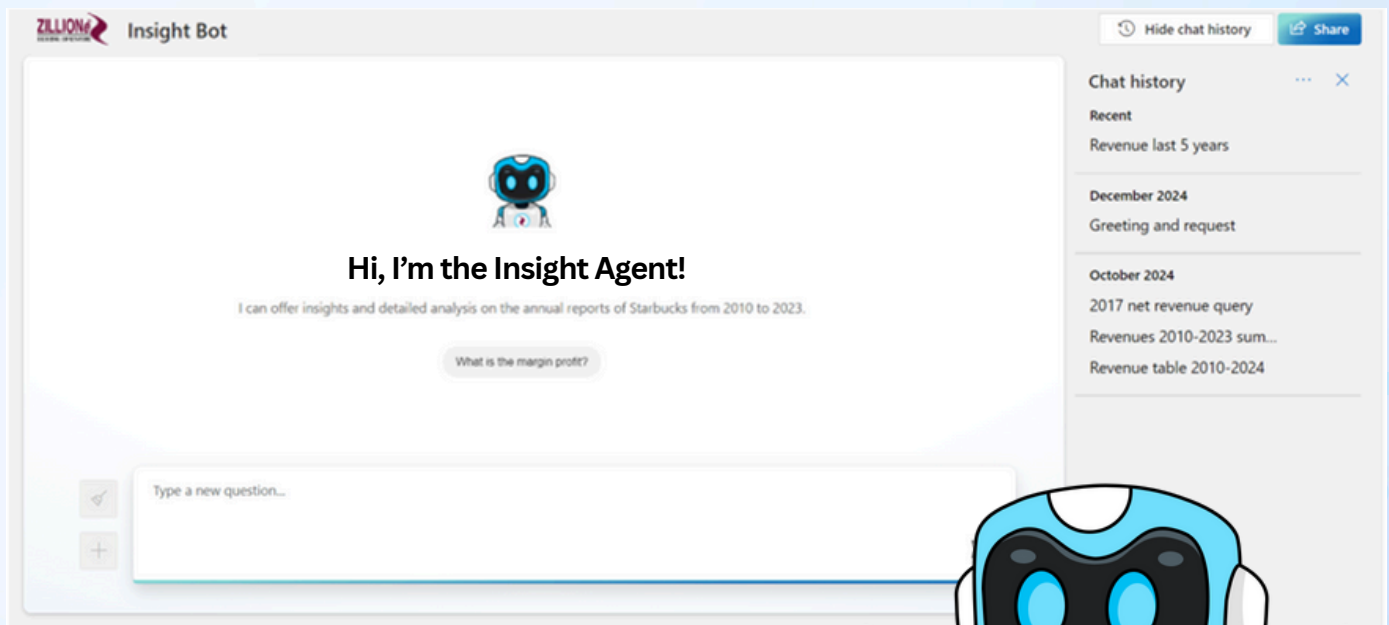
Data Security

- Your data is protected with industry-leading compliance and privacy standards.
- Your organizational data will not be used for LLM model training, maintaining the confidentiality and integrity of your information.



Chat History

- The Insight Agent maintains a detailed chat history, allowing users to review past interactions and revisit previous queries easily.
- This feature enhances productivity by providing quick access to prior information without the need to repeat the same questions.



KEY FEATURES

Multilanguage Support

- The Insight Agent supports multiple languages, allowing users to interact with the system in their preferred language.

在表格中比较过去四年的收入增长，包括每年的总收入以及与上一年相比的增长率。

当然！以下是星巴克过去四年的收入增长比较表，包括每年的总收入以及与上一年相比的增长率：

财年	总收入 (十亿美元)	与上一年相比的增长率
2022	\$32.3	11% 增长 ¹
2021	\$29.1	24% 增长 ²
2020	\$23.5	11% 下降 ³
2019	\$26.5	7% 增长 ³

希望这对您有帮助！如果您有任何其他问题，请随时告诉我。

3 references >

AI-generated content may be incorrect

Type a new question...



قارن نمو الإيرادات للسنوات الأربع الماضية في جدول، بما في ذلك إجمالي الإيرادات لكل عام ونسبة النمو مقارنة بالعام السابق على التوالي.

بالطبع! إليك مقارنة لنمو إيرادات ستاربكس على مدار السنوات الأربع الماضية في جدول، بما في ذلك إجمالي الإيرادات لكل عام ونسبة النمو مقارنة بالعام السابق:

السنة المالية	الإيرادات (بالمليارات)	نسبة النمو مقارنة بالعام السابق
2022	\$32.3	زيادة ¹ 11%
2021	\$29.1	زيادة ² 24%
2020	\$23.5	انخفاض ³ 11%
2019	\$26.5	زيادة ³ 7%

آمل أن تكون هذه المعلومات مفيدة! إذا كان لديك أي أسئلة أخرى، فلا تتردد في طرحها.

3 references >

AI-generated content may be incorrect

Type a new question...

