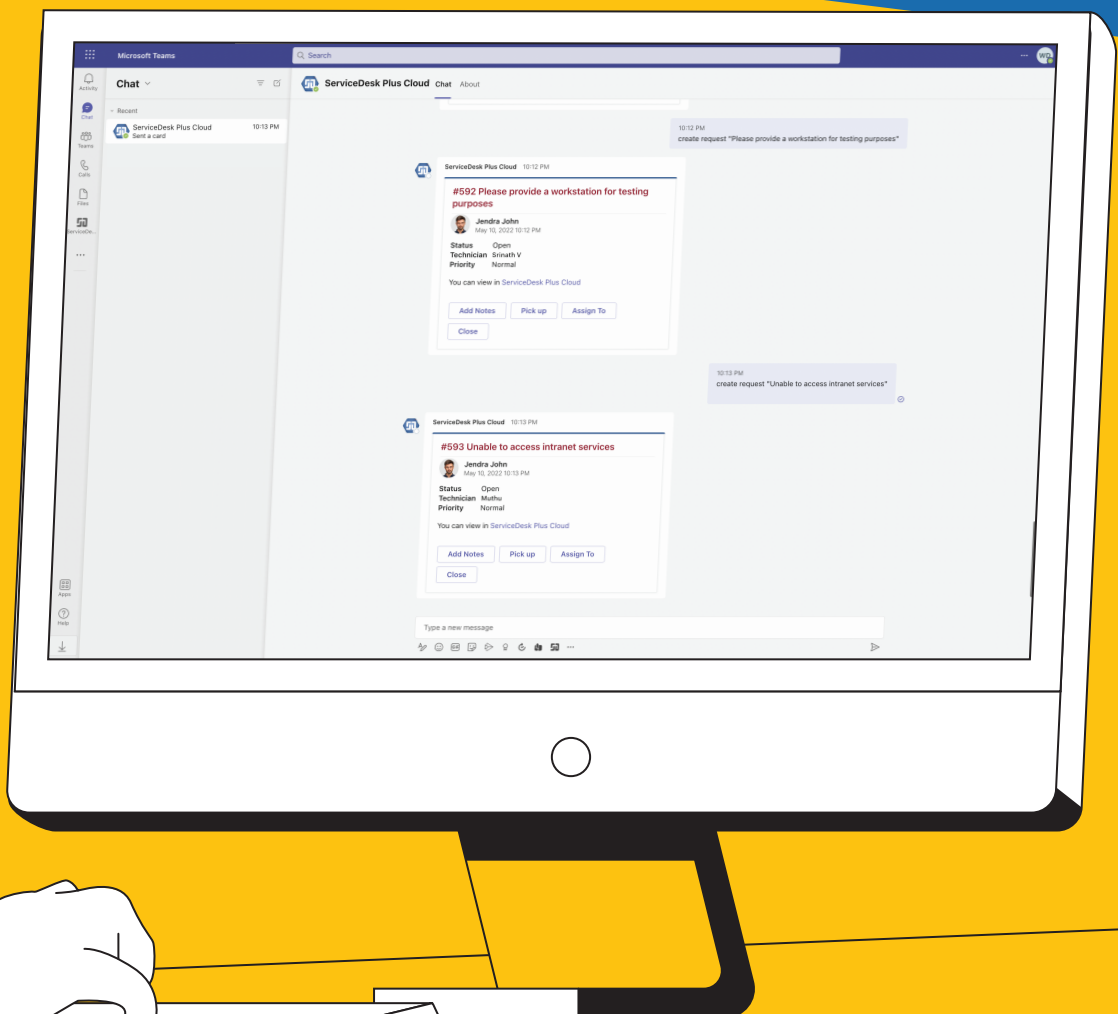
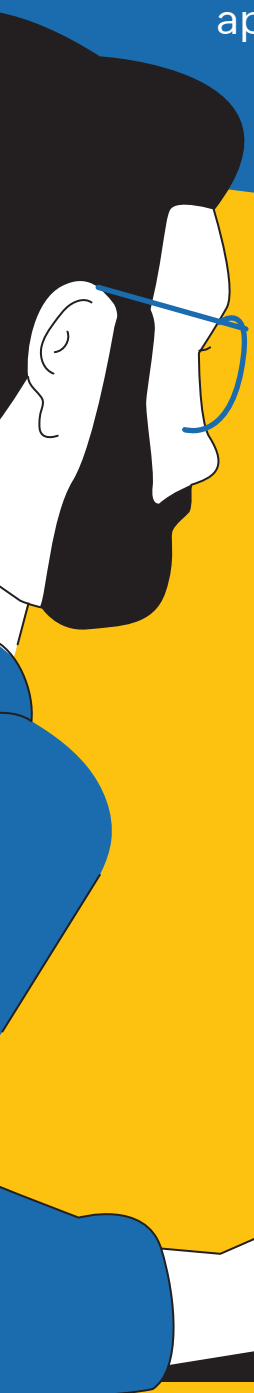
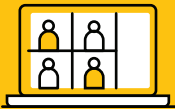


Leverage Microsoft 365 as a key channel for IT service management

ServiceDesk Plus offers integrations with various Microsoft applications to help IT technicians and end users complete multiple tasks right from their Microsoft applications



Contextual Microsoft 365 integrations for ITSM teams



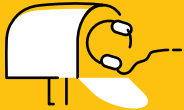
Microsoft Teams

Let your technicians and end users create, track, and manage all their requests from within Teams, Microsoft's chat and collaboration platform.



Microsoft 365 calendar

Automatically create Microsoft 365 calendar entries from reminders in ServiceDesk Plus, and sync reminders and leave days between ServiceDesk Plus and Microsoft 365 calendars.



ServiceDesk Plus add-in

Bring your help desk to your Outlook or Microsoft 365 mailbox, and perform help desk activities without even accessing your help desk portal.



Actionable messages

Use the action buttons in your email notifications to act on support tickets from your Outlook or Microsoft 365 mailbox.

Website: www.servicedeskplus.com
Questions: eval@manageengine.com
Demo: demo.servicedeskplus.com
Toll-free number: +1.888.720.9500

Zoho Corporation
4141 Hacienda Drive
Pleasanton, CA 94588, USA
Phone: +1.925.924.9500

ManageEngine
ServiceDesk Plus